

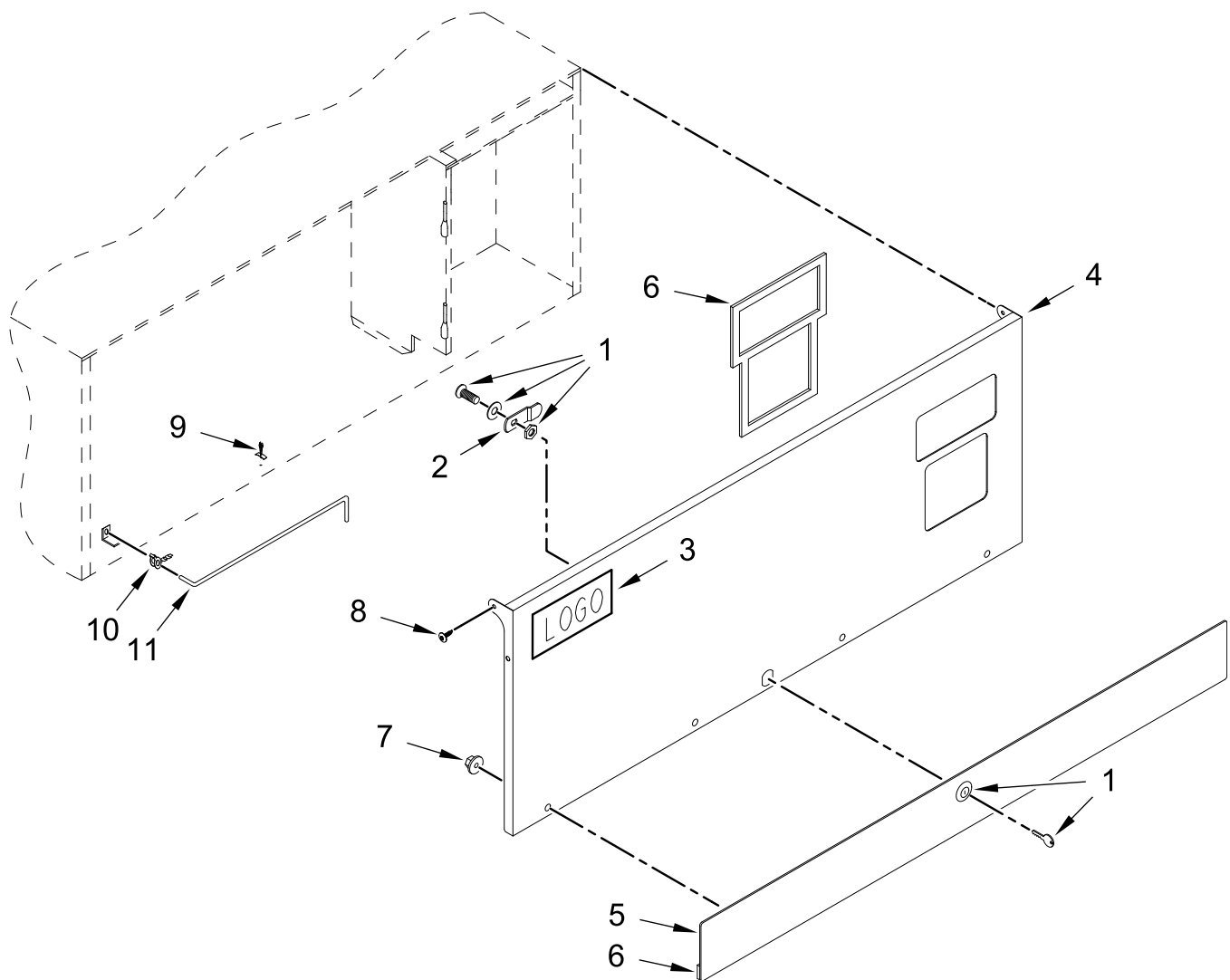


**COMMERCIAL GAS DRYER
MULTI-LOAD COIN SERVICE PARTS LIST**

MODELS:

MDG50PCCWW. (as of January 2017)

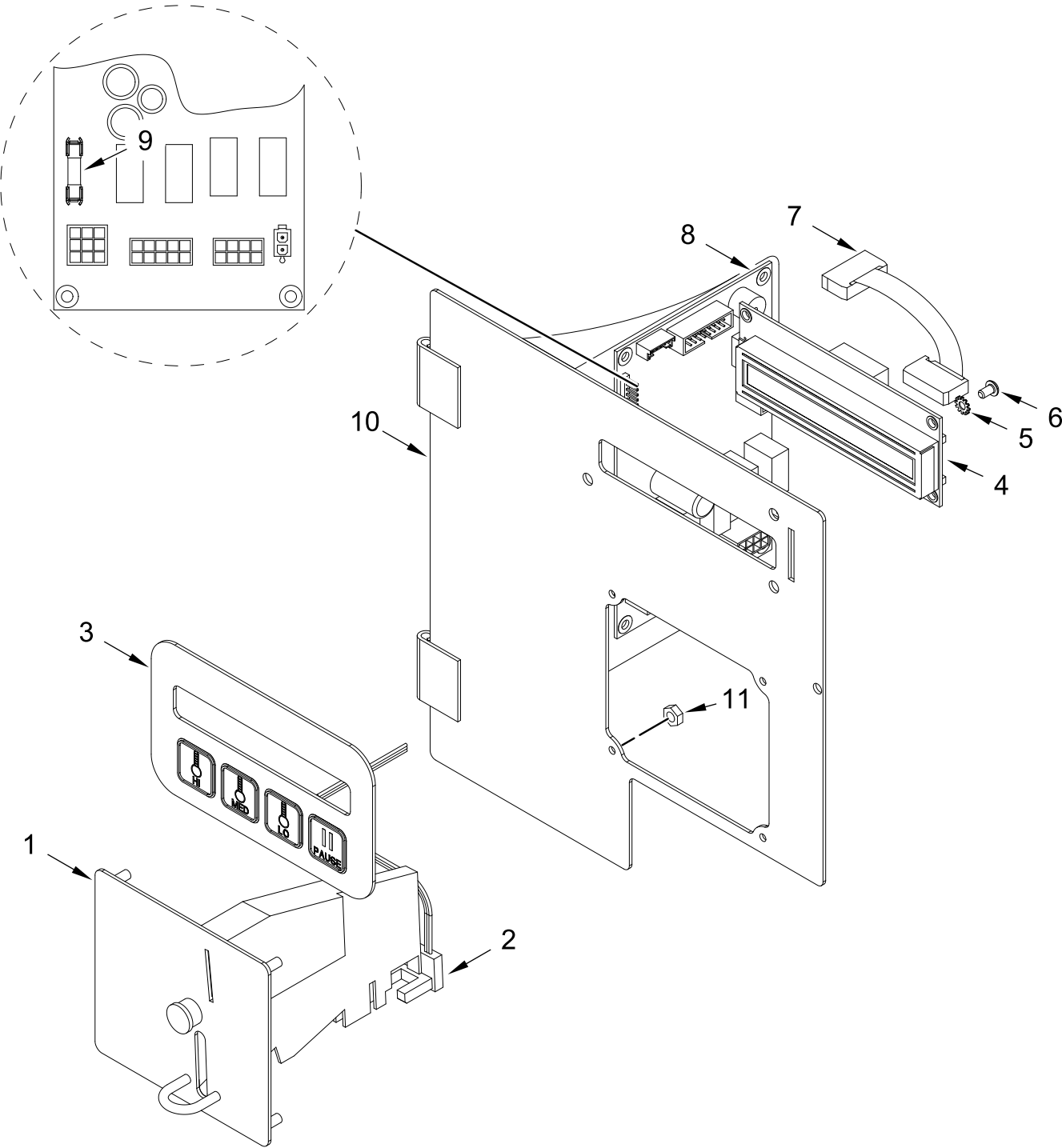
COIN CONTROL DOOR ASSEMBLY



COIN CONTROL DOOR ASSEMBLY

<u>Illus.</u> <u>No.</u>	<u>Part No.</u>	<u>Description</u>	<u>Illus.</u> <u>No.</u>	<u>Part No.</u>	<u>Description</u>	<u>Illus.</u> <u>No.</u>	<u>Part No.</u>	<u>Description</u>
1	WFR160038	High-Security MK-100 Lock Assembly with Key	5	WFR817285	Black Trim	9	WFR102603	Control Door Rod Support Catch
	WFR160140	Key ONLY (key number XX4451)	6	WFR117604	Foam Tape (When Ordering Specify Length, sold by the inch)	10	WFR102601	Control Door Rod Retainer Clip
2	WFR160066	Lock Cam Only	7	WFR152014	Serrated Hex Flange Nut 1/4-20	11	WFR102502	Control Door Support Rod
3	WFR112354	Maytag Badge	8	WFR150317	Screw 10-32 x 1/4 in (TORX PLUS®)			
4	WFR823300	Control Door Assembly with Black Trim						

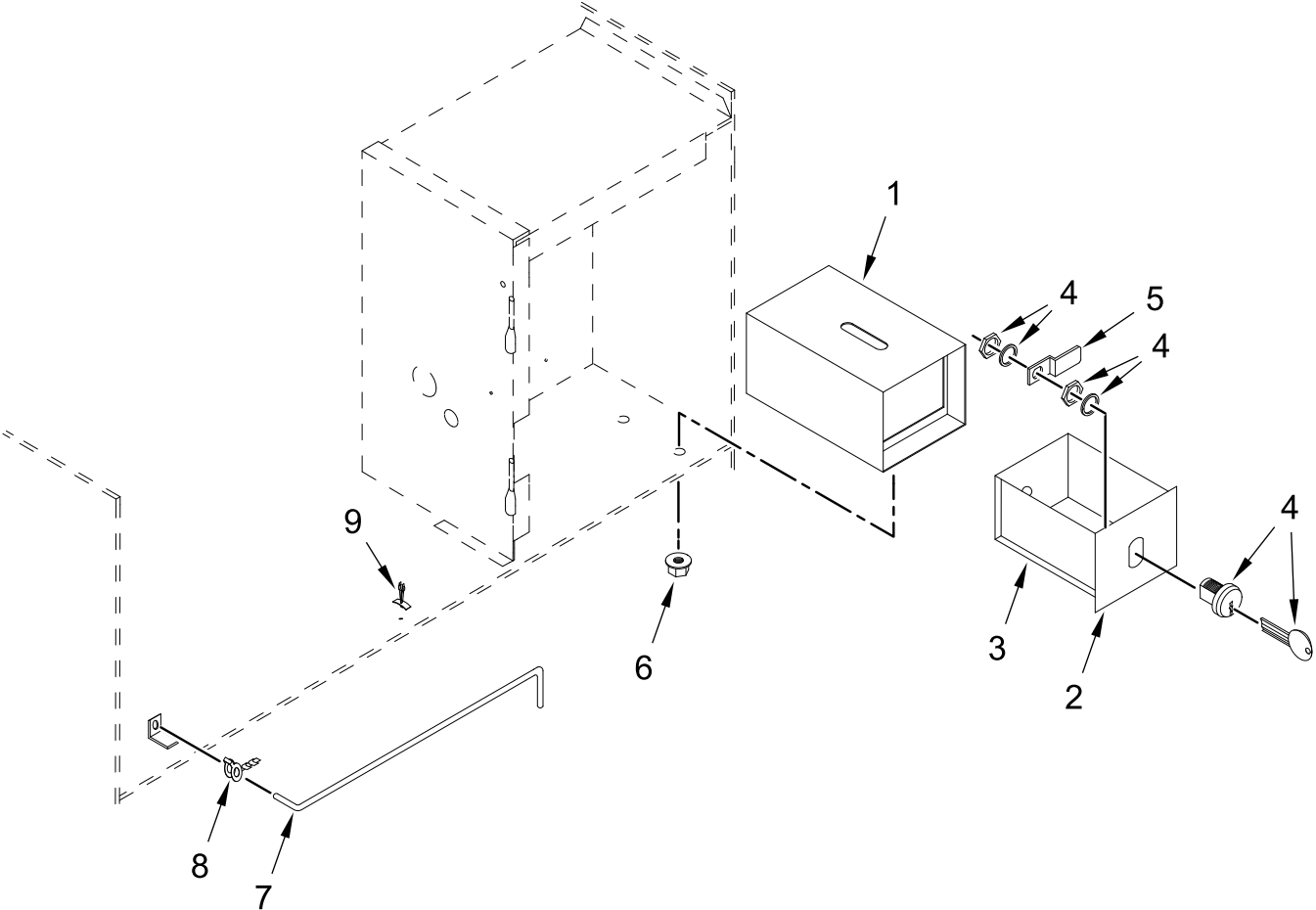
MICROPROCESSOR CONTROL PANEL ASSEMBLY



MICROPROCESSOR CONTROL PANEL ASSEMBLY

<u>Illus.</u> <u>No.</u>	<u>Part No.</u>	<u>Description</u>	<u>Illus.</u> <u>No.</u>	<u>Part No.</u>	<u>Description</u>	<u>Illus.</u> <u>No.</u>	<u>Part No.</u>	<u>Description</u>
1	WFR818232	25¢ Coin Assembly	7	WFR137250	Phase 7 Coin Ribbon Cable	10	WFR814957	Phase 7 Coin Control Panel Complete
2	WFR883774	Hanke Optical Switch Assembly with Connector	8	WFR137253	Phase 7.3 Gen 2 Single Coin Board		WFR814917	Phase 7 Coin Control Panel ONLY
3	WFR112575	Phase 7.3 Coin Keyboard	9	WFR136111	Fuse 5 Amp (Slo-Blo)	11	WFR152102	Nut M3
4	WFR137270	Liquid Crystal Display						
5	WFR153010	Lock Washer #6						
6	WFR150005	Screw 6-32 x 1/4 in						

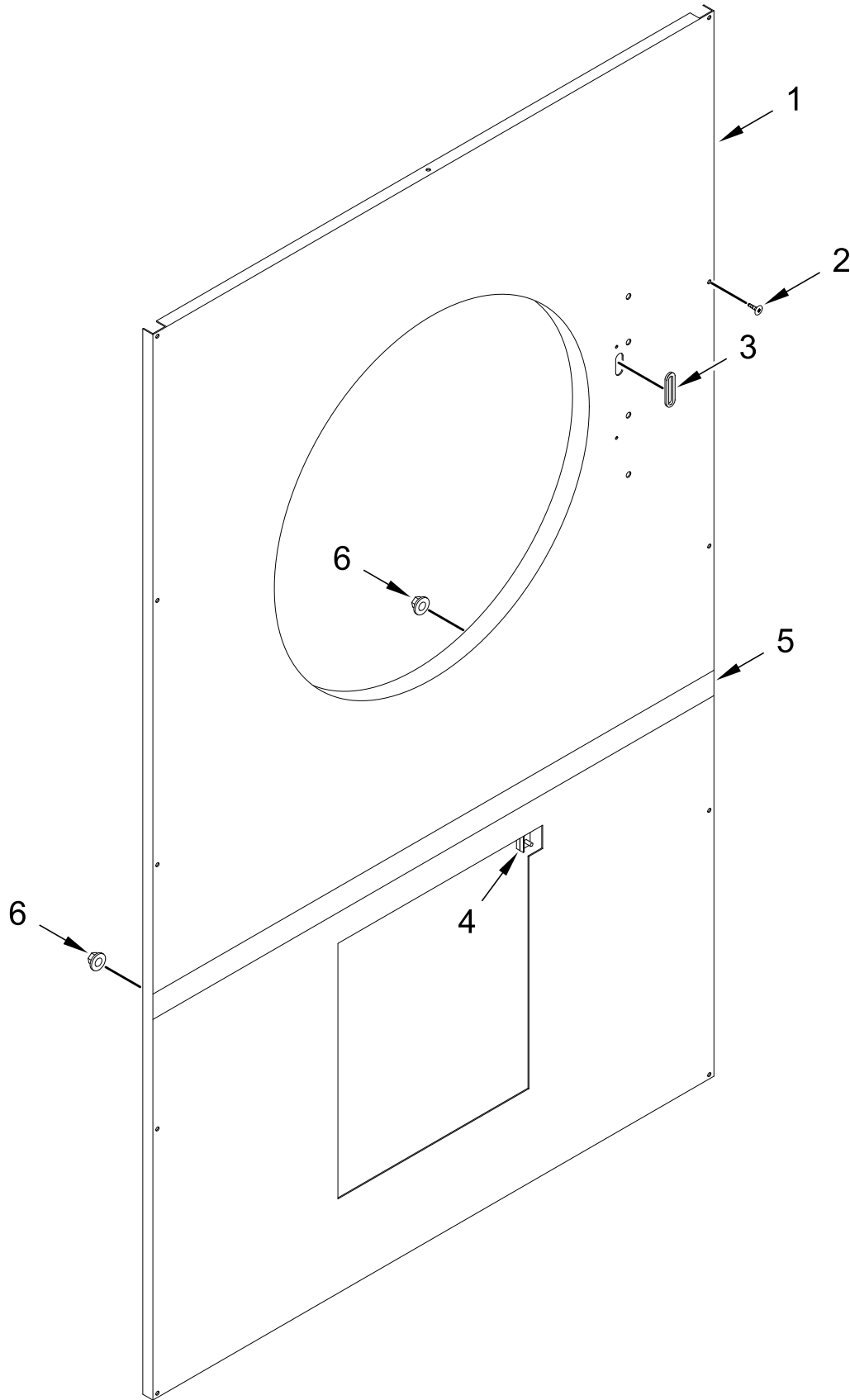
COIN VAULT ASSEMBLY



COIN VAULT ASSEMBLY

<u>Illus.</u> <u>No.</u>	<u>Part No.</u>	<u>Description</u>	<u>Illus.</u> <u>No.</u>	<u>Part No.</u>	<u>Description</u>	<u>Illus.</u> <u>No.</u>	<u>Part No.</u>	<u>Description</u>
1	WFR884050	Coin Vault Assembly Complete	4	WFR875061	Key Lock Assembly Complete (1/4 Turn)	8	WFR102601	Control Door Rod Retainer Clip
	WFR823143	Coin Vault ONLY	5	WFR160028	Cam ONLY (1/4 Turn)	9	WFR102603	Control Door Rod Support Catch
2	WFR802018	Coin Box Faceplate ONLY (1/4 Turn)	6	WFR152014	Serrated Hex Flange Nut 1/4-20			
3	WFR802020	Coin Box Assembly (1/4 Turn)	7	WFR102502	Control Door Support Rod			
	WFR802019	Coin Box ONLY (1/4 Turn)						

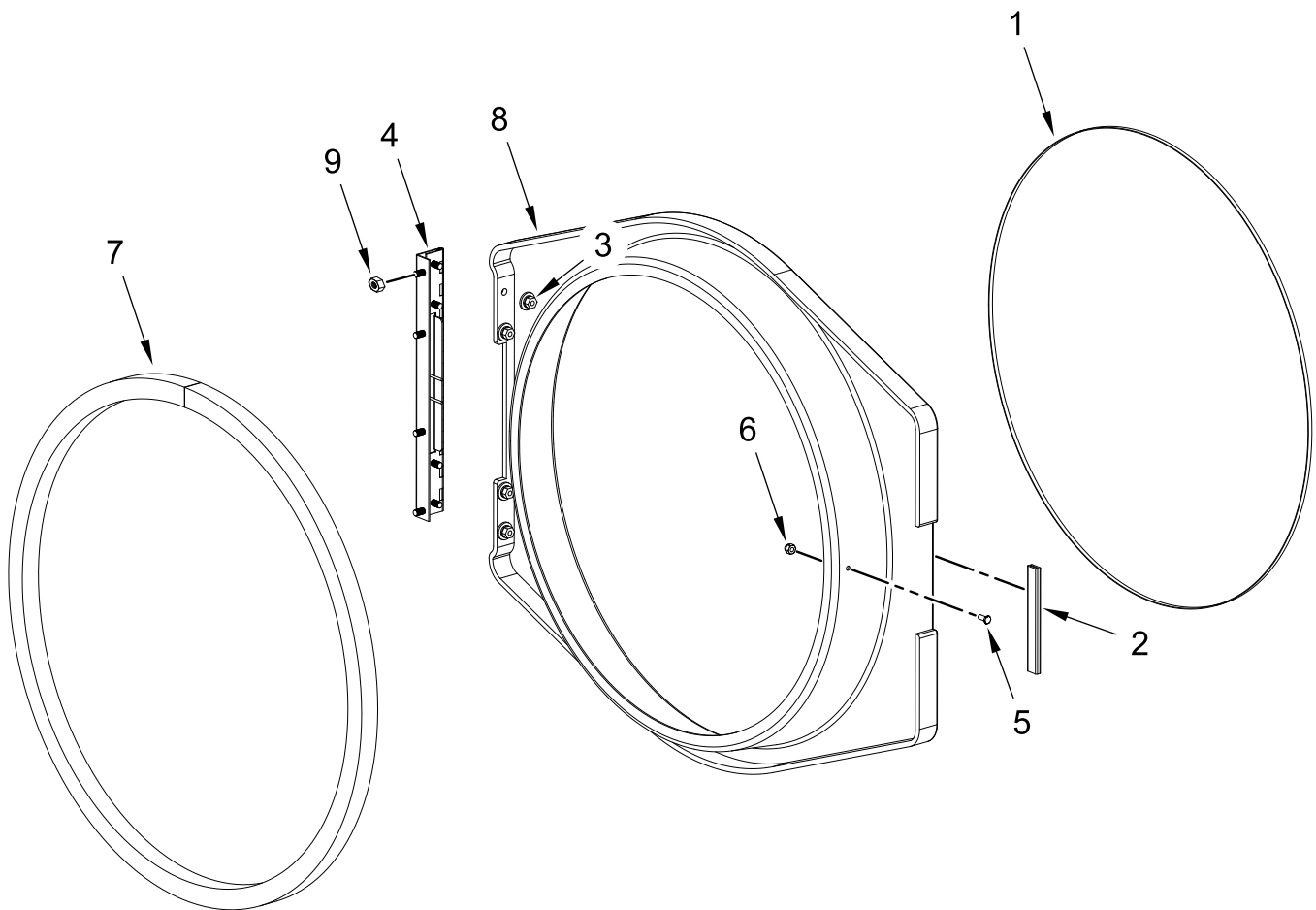
FRONT PANEL ASSEMBLY



FRONT PANEL ASSEMBLY

<u>Illus.</u> <u>No.</u>	<u>Part No.</u>	<u>Description</u>	<u>Illus.</u> <u>No.</u>	<u>Part No.</u>	<u>Description</u>	<u>Illus.</u> <u>No.</u>	<u>Part No.</u>	<u>Description</u>
1	WFR825625	Front Panel Assembly	3	WFR121405	Rubber Grommet	5	WFR817185	Trim, Inner
2	WFR150309	Screw 10-16 x 1/2 in (Hex Head TEK Crimptite®)	4	WFR122116	Door Switch	6	WFR152014	Serrated Hex Flange Nut 1/4-20

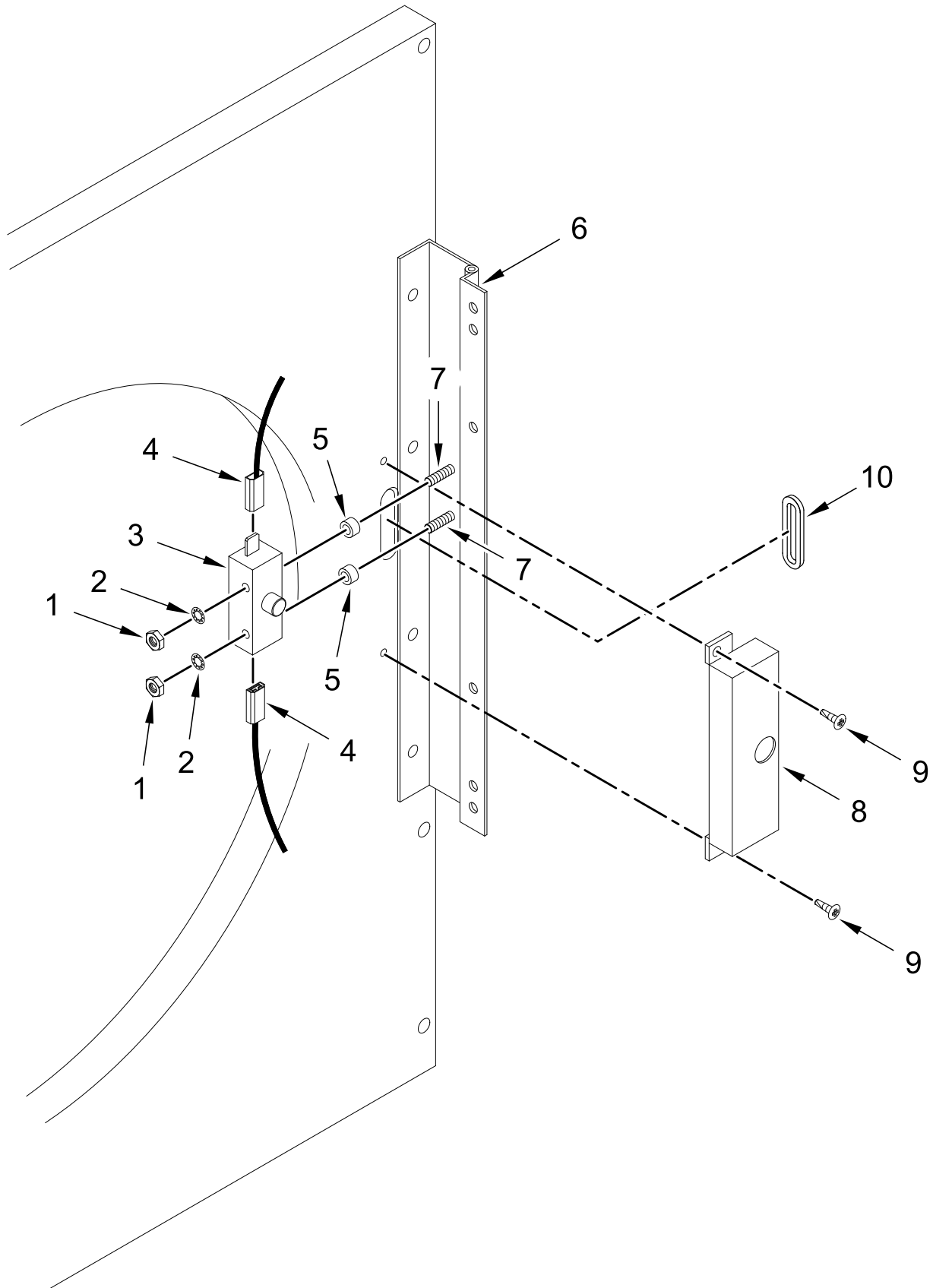
MAIN DOOR ASSEMBLY



MAIN DOOR ASSEMBLY

<u>Illus.</u> <u>No.</u>	<u>Part No.</u>	<u>Description</u>	<u>Illus.</u> <u>No.</u>	<u>Part No.</u>	<u>Description</u>	<u>Illus.</u> <u>No.</u>	<u>Part No.</u>	<u>Description</u>
1	WFR102210	Door Glass	5	WFR150120	Screw 10-32 x 7/16 in	8	WFR882991	Black Main Door Assembly with Hinge Assembly
2	WFR102328	Handle Edge	6	WFR151010	Nut 10-32 (Black)			(includes No(s) 1 through 8)
3	WFR152014	Serrated Hex Flange Nut 1/4-20	7	WFR102349	Door Gasket	9	WFR152014	Serrated Hex Flange Nut 1/4-20
4	WFR814756	Main Door Hinge Assembly						

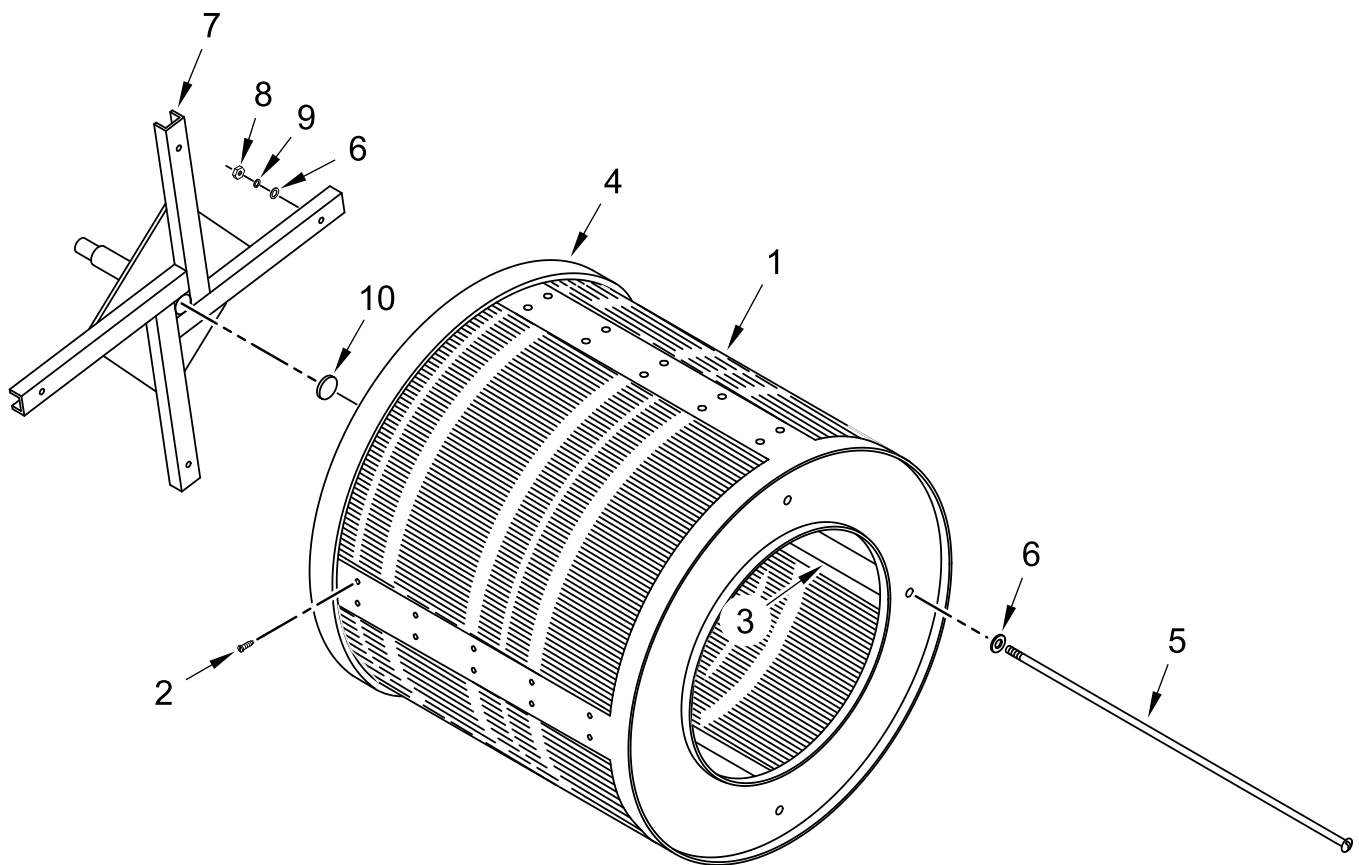
MAIN DOOR SWITCH ASSEMBLY



MAIN DOOR SWITCH ASSEMBLY

<u>Illus.</u> <u>No.</u>	<u>Part No.</u>	<u>Description</u>	<u>Illus.</u> <u>No.</u>	<u>Part No.</u>	<u>Description</u>	<u>Illus.</u> <u>No.</u>	<u>Part No.</u>	<u>Description</u>
1	WFR152013	Nut 6-32	5	WFR154281	Standard Nylon Spacer 3/8 in	8	WFR313218	Main Door Switch Housing ONLY
2	WFR153010	Lock Washer #6				9	WFR150201	Screw 10-32 x 1/4 in
3	WFR137005	Switch, Single Pole Door	6	WFR814756	Main Door Hinge Assembly	10	WFR121405	Rubber Grommet
4	WFR121028	Insulated Female Terminal	7	WFR153565	Self Clinching Stud 6-32 x 1 in			

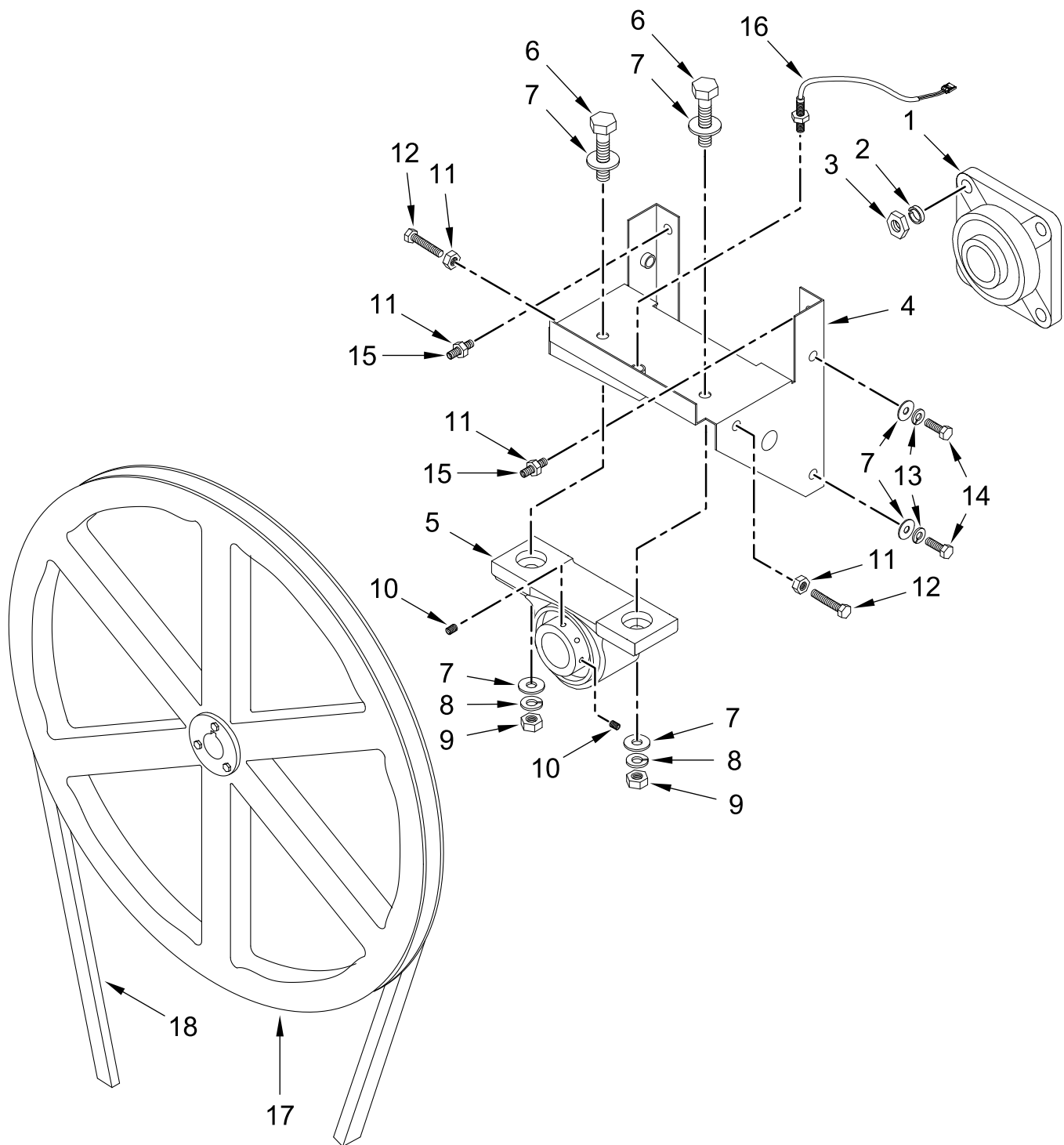
TUMBLER / SUPPORT ASSEMBLIES



TUMBLER / SUPPORT ASSEMBLIES

<u>Illus.</u> <u>No.</u>	<u>Part No.</u>	<u>Description</u>	<u>Illus.</u> <u>No.</u>	<u>Part No.</u>	<u>Description</u>	<u>Illus.</u> <u>No.</u>	<u>Part No.</u>	<u>Description</u>
1	WFR800837	Tumbler and Support Assembly Complete (without Felt Collar) (includes No(s) 1 to 3, and 5 to 10)	3	WFR301302	Galvanized Short Tumbler Rib	8	WFR152005	Nut 3/8-16
	WFR800838	Tumbler ONLY (without Felt Collar)		WFR301311	Galvanized Tall Tumbler Rib	9	WFR153005	Split Lock Washer 3/8 in
2	WFR150313	Screw 10-16 x 1/2 in (TORX®)	4	WFR116001	Felt Collar	10	WFR115986	Felt Tumbler Pad
	WFR150429	TORX® Hand Driver T25 (for removal of TORX® head screw)		WFR401010	Adhesive for Felt Collar (5 oz. tube)			
			5	WFR100903	Tie Rod 3/8-16 x 38-1/2 in			
			6	WFR153004	Washer 3/8 x 1 in			
			7	WFR850059	Tumbler Support ONLY			

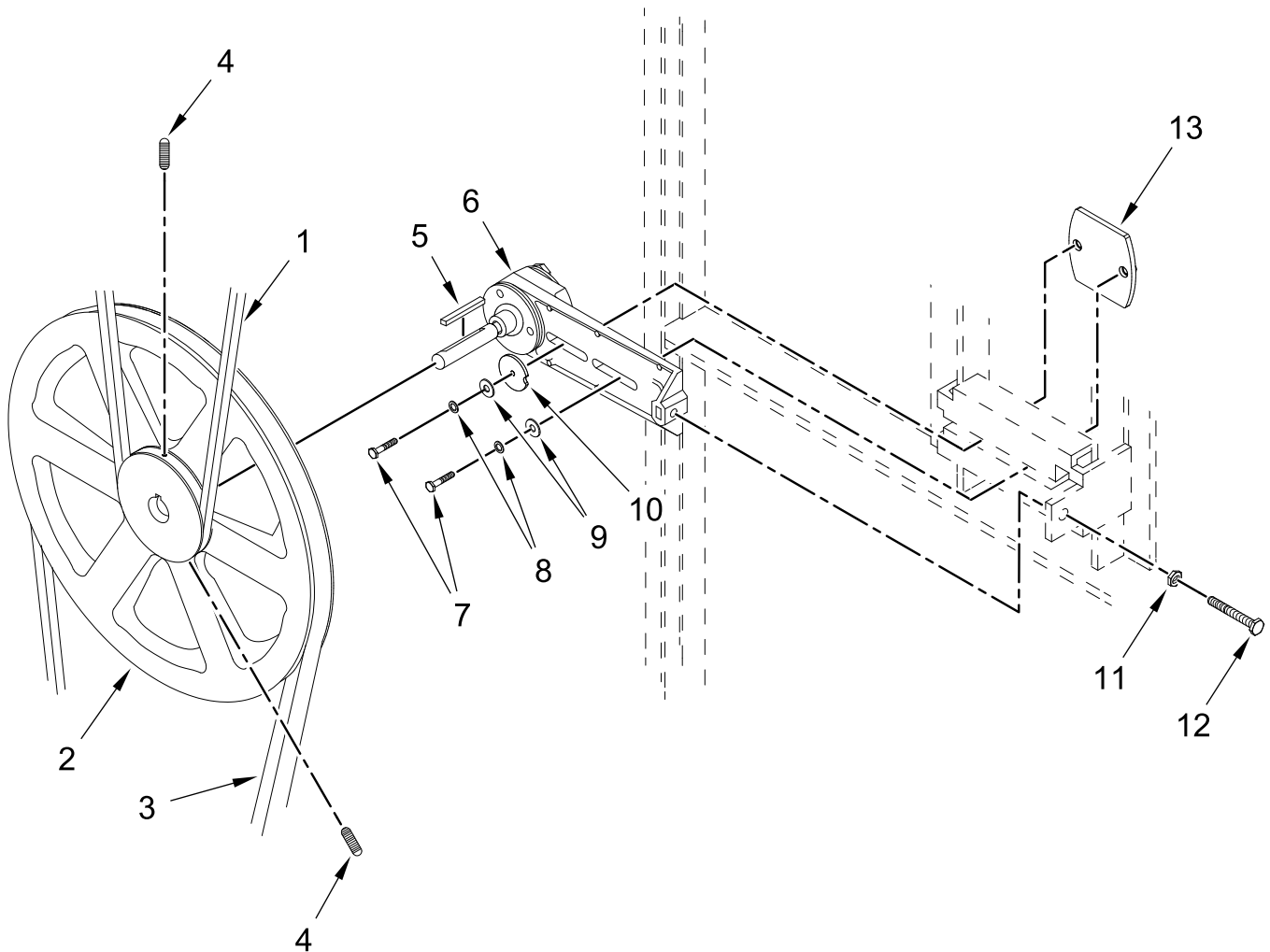
TUMBLER BEARING ASSEMBLY



TUMBLER BEARING ASSEMBLY

<u>Illus.</u> <u>No.</u>	<u>Part No.</u>	<u>Description</u>	<u>Illus.</u> <u>No.</u>	<u>Part No.</u>	<u>Description</u>	<u>Illus.</u> <u>No.</u>	<u>Part No.</u>	<u>Description</u>
1	WFR880220	Flange Bearing 1 3/4 in	7	WFR153004	Washer 3/8 x 1 in	14	WFR150501	Tap Bolt 5/16-18 x 3/4 in
2	WFR153025	Split Lock Washer 9/16 in	8	WFR153005	Split Lock Washer 3/8 in	15	WFR150610	Set Screw 5/16-18 x 1 1/2 in
3	WFR152050	Nut 9/16-12	9	WFR152005	Nut 3/8-16	16	WFR822735	Rotational Sensor Assembly
4	WFR883387	Bearing Assembly Complete	10	WFR102120	Sintered 8 Magnet	17	WFR101100	Pulley 18 in
	WFR800980	Bearing Support ONLY	11	WFR152004	Nut 5/16-18	18	WFR100100	V-Belt 5L660R
			12	WFR150621	Tap Bolt 5/16-18 x 1 1/2 in			
5	WFR883710	Pillow Block Bearing 1-3/8 in	13	WFR153002	Split Lock Washer 5/16 in			
6	WFR150601	Bolt 3/8 x 2 in						

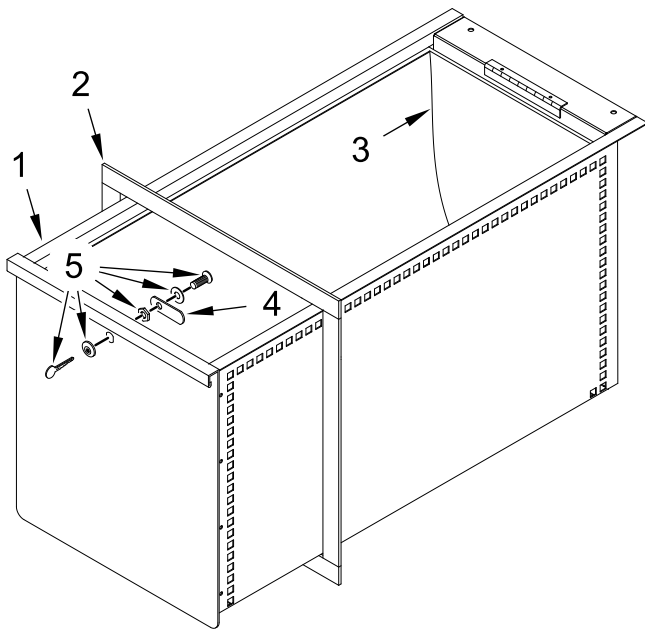
IDLER BEARING ASSEMBLY



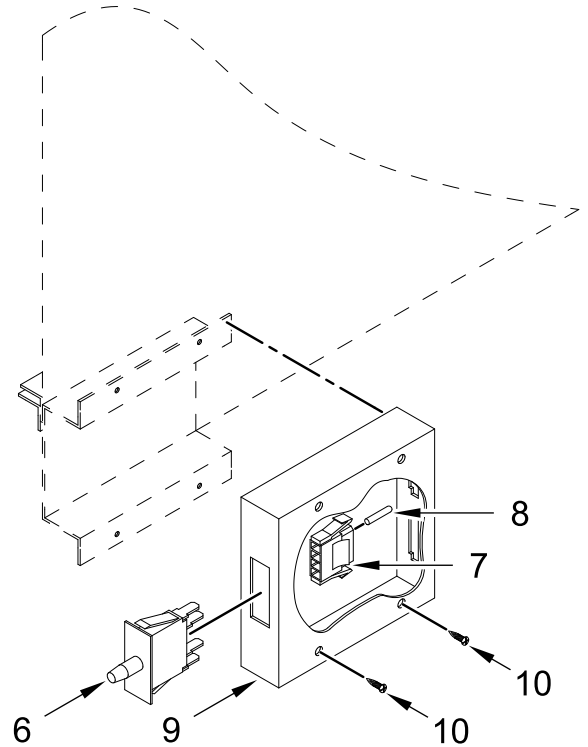
IDLER BEARING ASSEMBLY

<u>Illus.</u> <u>No.</u>	<u>Part No.</u>	<u>Description</u>	<u>Illus.</u> <u>No.</u>	<u>Part No.</u>	<u>Description</u>	<u>Illus.</u> <u>No.</u>	<u>Part No.</u>	<u>Description</u>
1	WFR100100	V-Belt 5L660R	6	WFR882576	Idler Bearing Assembly Complete	9	WFR153004	Washer 3/8 x 1 in
2	WFR101129	Pulley				10	WFR801009	Idler Square Washer
3	WFR100105	V-Belt 4L520R			(includes No(s) 5 through 12)	11	WFR152004	Nut 5/16-18
4	WFR154301	Set Screw 5/16-18 x 1 in	7	WFR150617	Bolt 3/8-16 x 1 in	12	WFR150509	Bolt 5/16-18 x 3 in
5	WFR100705	Key 3/16 x 3/16 x 1 3/8 in	8	WFR153005	Split Lock Washer 3/8 in			

LOCKING LINT DRAWER / SWITCH ASSEMBLIES



Locking Lint Drawer

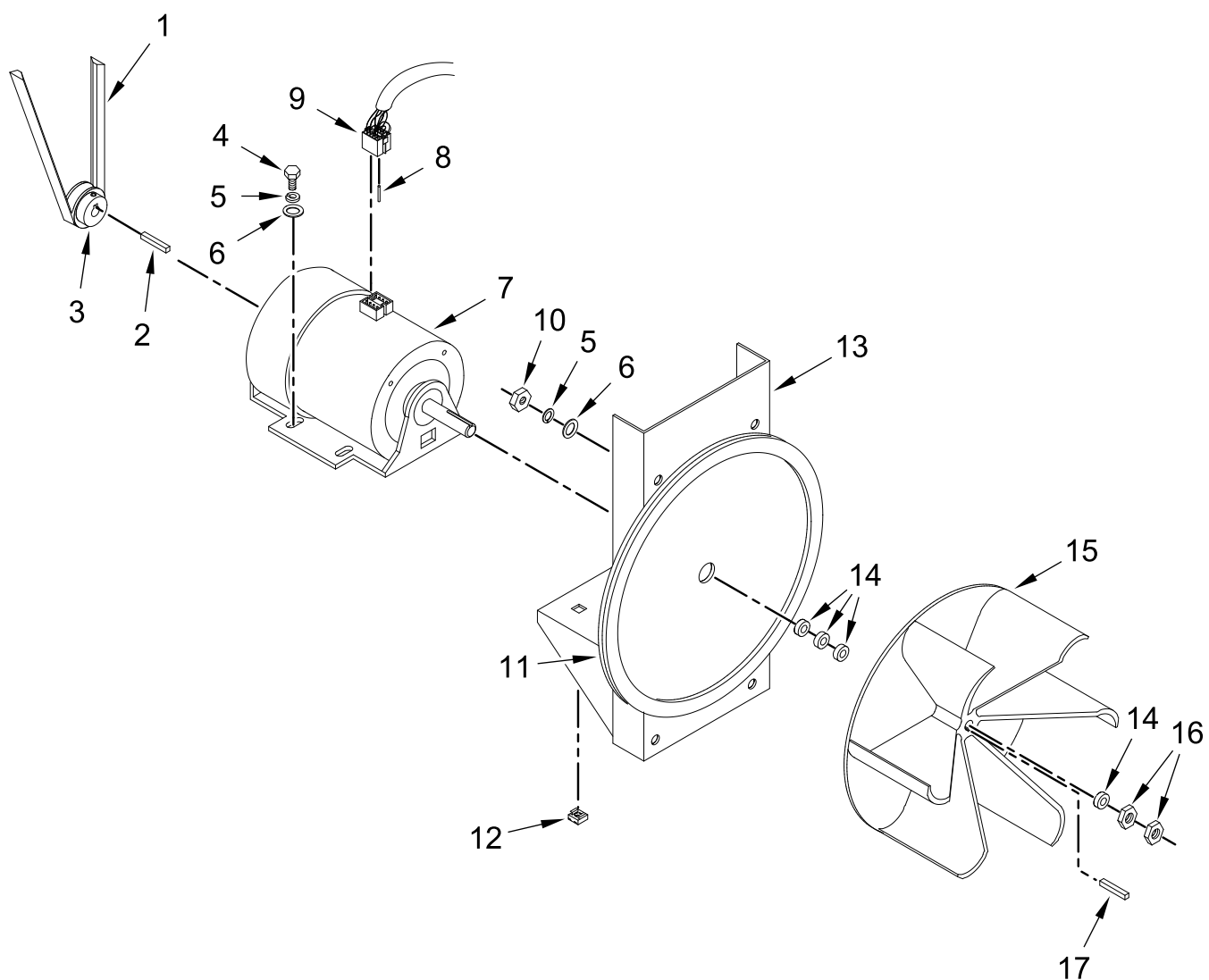


Lint Drawer Switch

LOCKING LINT DRAWER / SWITCH ASSEMBLIES

<u>Illus.</u> <u>No.</u>	<u>Part No.</u>	<u>Description</u>	<u>Illus.</u> <u>No.</u>	<u>Part No.</u>	<u>Description</u>	<u>Illus.</u> <u>No.</u>	<u>Part No.</u>	<u>Description</u>
1	WFR884084	Locking Lint Drawer Assembly	5	WFR160039	Lock Assembly (no key)	9	WFR805864	Lint Drawer Switch Box Assembly
2	WFR117604	Foam Tape (When Ordering Specify Length, sold by the inch)		WFR160140	Key ONLY (key number XX4451)			(includes No(s) 6 through 10)
3	WFR108225	Lint Bag	6	WFR122116	Door Switch		WFR304139	Lint Drawer Switch Box Cover ONLY
4	WFR160014	Cam ONLY	7	WFR122605	4 Pin Connector			
			8	WFR122701	Female Crimp Socket	10	WFR150301	Screw 8-18 x 7/16 in
				WFR122801	Pin / Socket Extraction Tool (Not Illustrated)			

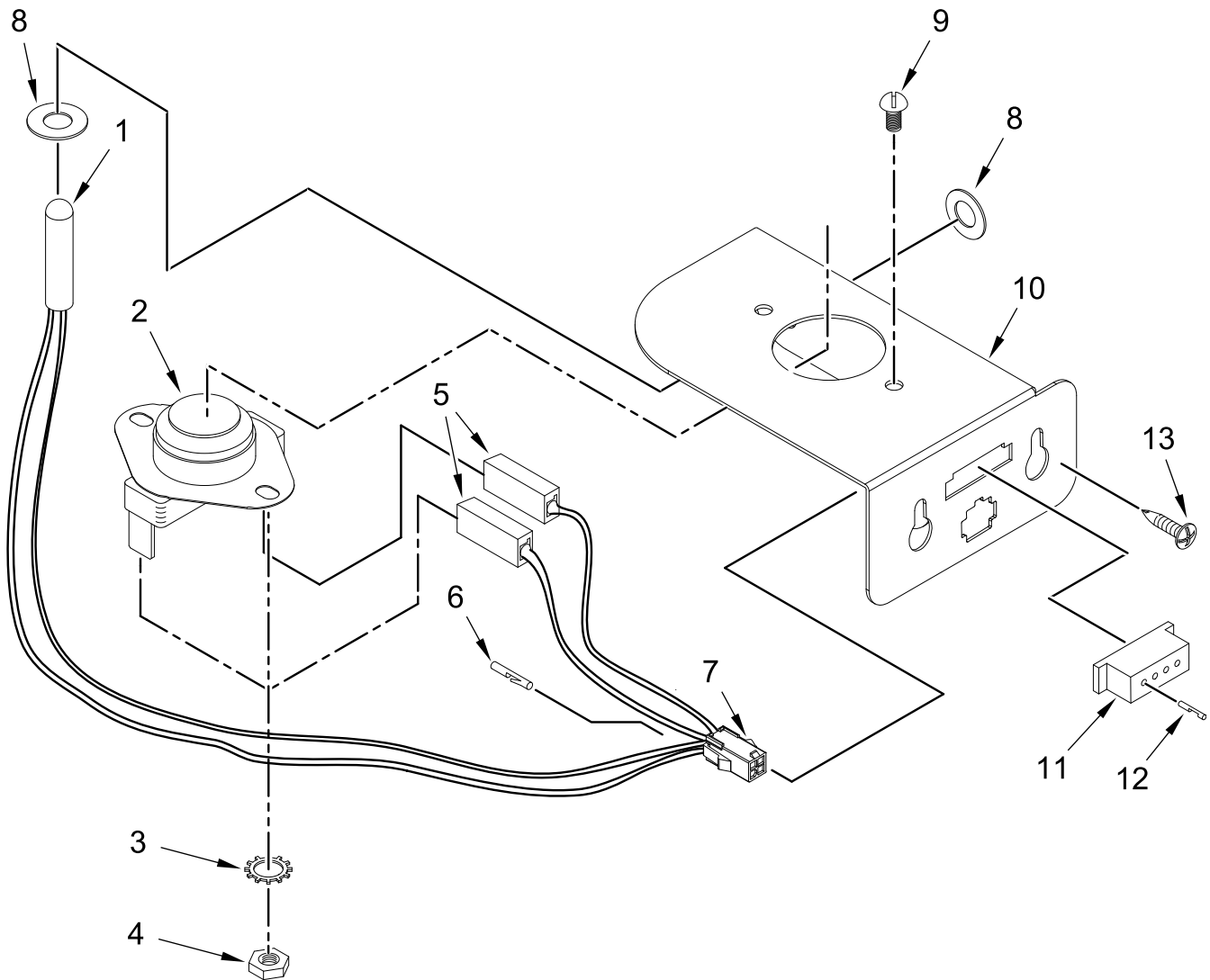
NON-REVERSING MOTOR MOUNT ASSEMBLY



NON-REVERSING MOTOR MOUNT ASSEMBLY

<u>Illus.</u> <u>No.</u>	<u>Part No.</u>	<u>Description</u>	<u>Illus.</u> <u>No.</u>	<u>Part No.</u>	<u>Description</u>	<u>Illus.</u> <u>No.</u>	<u>Part No.</u>	<u>Description</u>
1	WFR100105	V-Belt 4L520R	7	WFR100069	Motor with Plug 3/4 hp 115-230v 1ø 60 Hz	11	WFR117604	Foam Tape (When Ordering Specify Length, sold by the inch)
2	WFR100701	Key 3/16 X 3/16 X 1 in		WFR817029	Motor Assembly Complete	12	WFR154000	Tinnerman® Nut 5/16-18
3	WFR101132	Motor Pulley 2 x 5/8 in			(includes No(s) 2 through 16)	13	WFR850017	Motor Mount ONLY
4	WFR150501	Tap Bolt 5/16-18 x 3/4 in	8	WFR122701	Female Crimp Socket	14	WFR153050	Washer 1/2 x 1 1/6 in
5	WFR153002	Split Lock Washer 5/16 in		WFR122801	Pin / Socket Extraction Tool (Not Illustrated)	15	WFR100604	Impellor 12 1/2 in
6	WFR153001	Washer 5/16 in	9	WFR137030	8 Pin Connector	16	WFR152006	Nut 1/2-20
			10	WFR152004	Nut 5/16-18			

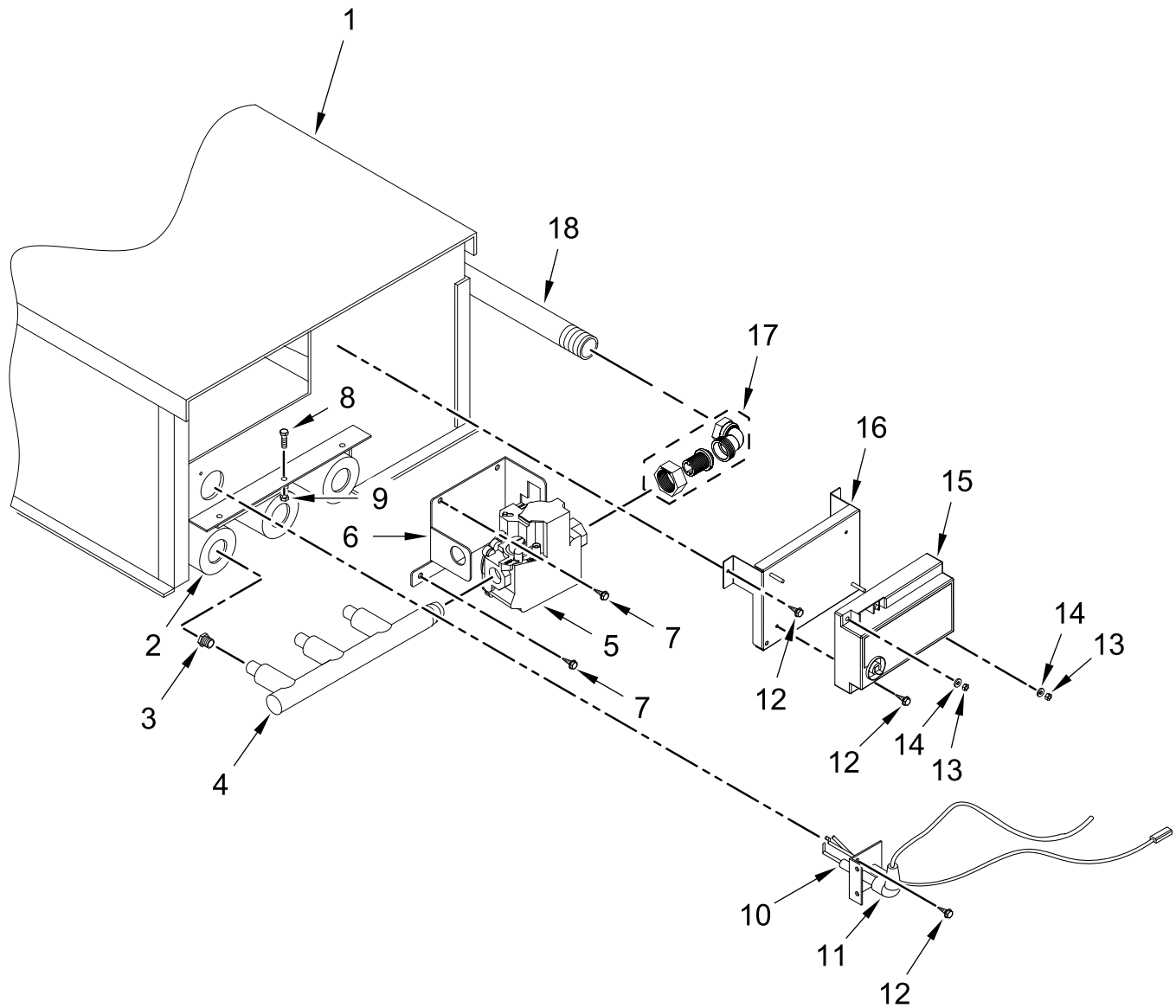
SENSOR BRACKET ASSEMBLY



SENSOR BRACKET ASSEMBLY

<u>Illus.</u> <u>No.</u>	<u>Part No.</u>	<u>Description</u>	<u>Illus.</u> <u>No.</u>	<u>Part No.</u>	<u>Description</u>	<u>Illus.</u> <u>No.</u>	<u>Part No.</u>	<u>Description</u>
1	WFR884614	Temperature Sensor Probe Assembly (includes No(s) 1 and 5 through 8)	7	WFR122649	4 Pin Connector	12	WFR122706	Female Crimp Socket
2	WFR130103	Hi-Limit Thermostat 225°	8	WFR154007	Push On Fastener 1/4 in	13	WFR150301	Screw 8-18 x 7/16 in
3	WFR153010	Lock Washer #6	9	WFR150005	Screw 6-32 x 1/4 in			
4	WFR152000	Nut 6-32	10	WFR805837	Temperature Sensor Assembly Complete (includes No(s) 1 through 10)			
5	WFR121028	Insulated Female Terminal		WFR322214	Temperature Sensor Bracket ONLY			
6	WFR122643	Pin Crimp Socket	11	WFR122648	4 Pin Connector			

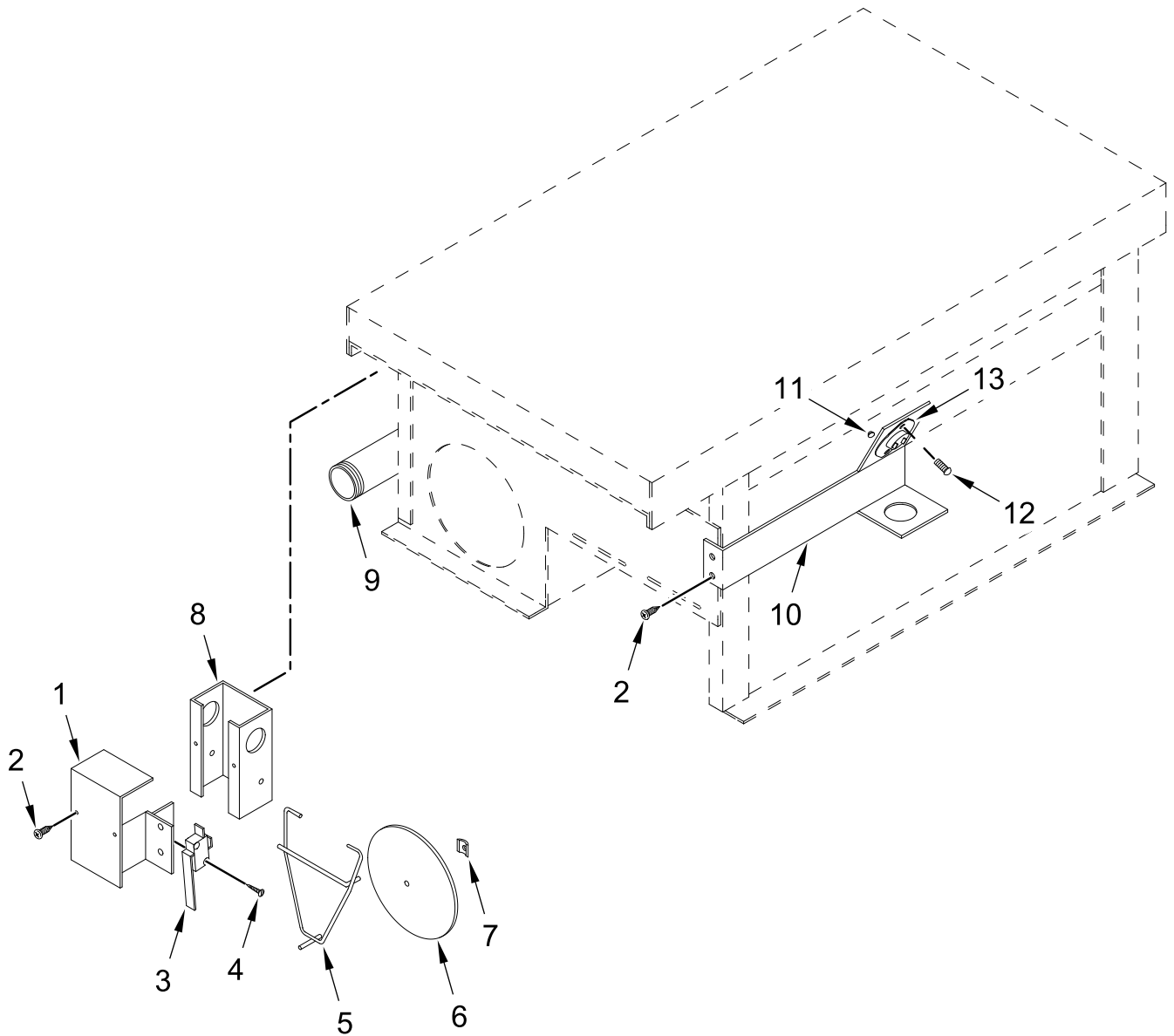
DIRECT SPARK IGNITION BURNER ASSEMBLY



DIRECT SPARK IGNITION BURNER ASSEMBLY

<u>Illus.</u> <u>No.</u>	<u>Part No.</u>	<u>Description</u>	<u>Illus.</u> <u>No.</u>	<u>Part No.</u>	<u>Description</u>	<u>Illus.</u> <u>No.</u>	<u>Part No.</u>	<u>Description</u>
1	WFR817062	Natural Gas Burner Assembly Complete (includes No(s) 1, 2, and 4 through 18)	6	WFR345590	Gas Valve Bracket	15	WFR128937	Direct Spark Ignition Module (3 Tries)
2	WFR850899	Burner Box ONLY	7	WFR150309	Screw 10-16 x 1/2 in (Hex Head TEK Crimptite®)	16	WFR810029	Direct Spark Ignition Module Mounting Bracket
3	WFR141105	Large Burner Tube	8	WFR150108	Screw 8-32 x 1/2 in	17	WFR141317	Union Elbow 1/2 in
	WFR140820	Burner Orifice #29 (Natural Gas) ONLY	9	WFR151001	Nut 8-32	18	WFR142809	Pipe 1/2 x 29 1/8 in
	WFR883325	L.P. Conversion Kit (includes orifices) (Consult factory for elevations +2K Ft)	10	WFR128915	Ignitor Probe ONLY			
4	WFR141232	Manifold 1/2 in. (3-port)	11	WFR829999	High Voltage Wire with 1/4 in. Spade Connection			
5	WFR128979	Gas Valve (Natural Gas)	12	WFR150300	Screw 10-16 x 1/2 in (Hex Washer TEK Crimptite®)			
			13	WFR152013	Nut 6-32			
			14	WFR153017	SAE Washer #6			

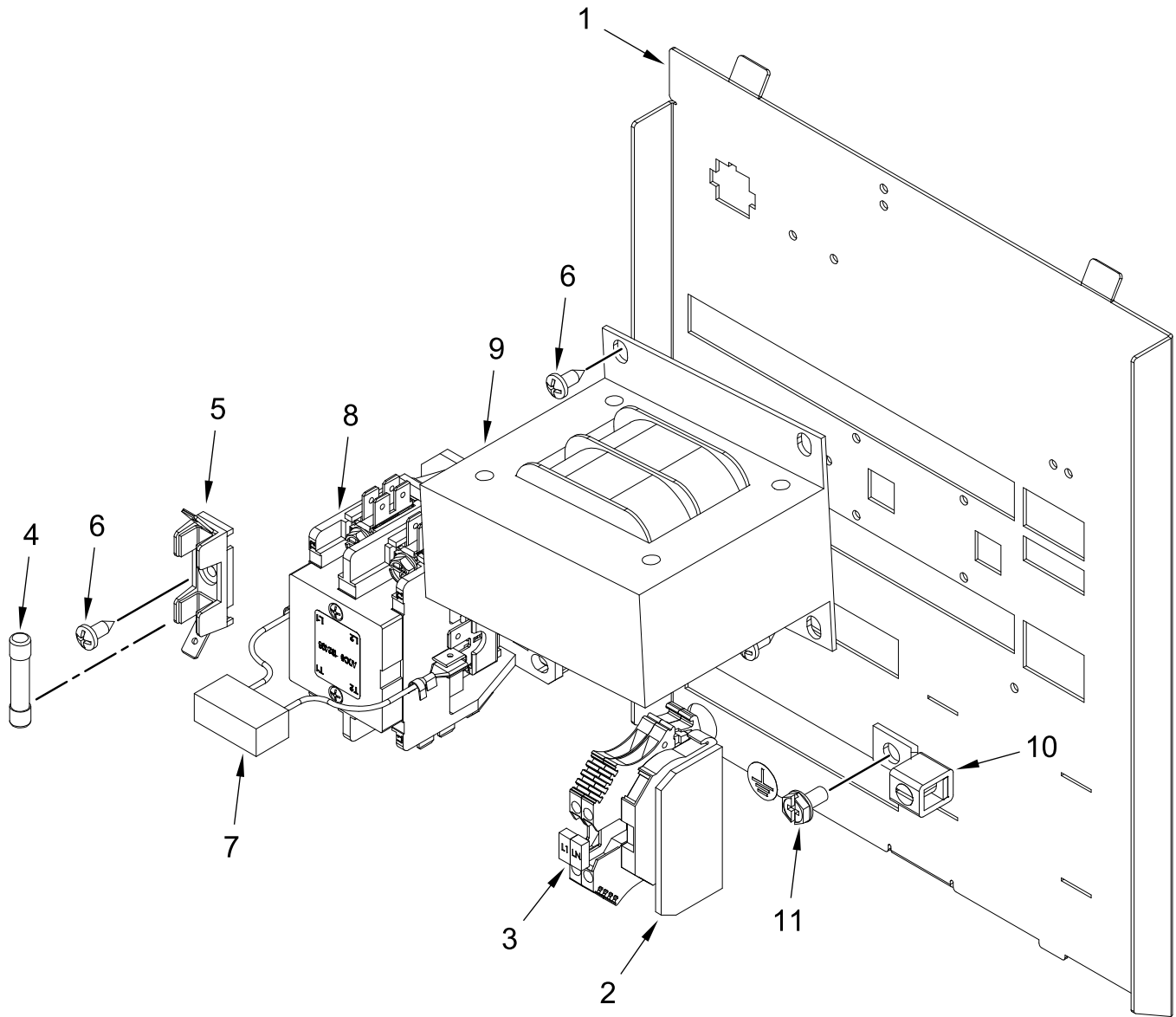
SAIL SWITCH / BURNER SUB ASSEMBLY



SAIL SWITCH / BURNER SUB ASSEMBLY

<u>Illus.</u> <u>No.</u>	<u>Part No.</u>	<u>Description</u>	<u>Illus.</u> <u>No.</u>	<u>Part No.</u>	<u>Description</u>	<u>Illus.</u> <u>No.</u>	<u>Part No.</u>	<u>Description</u>
1	WFR350283	Sail Switch Box Cover and Bracket ONLY	6	WFR319202	Sail Switch Damper	11	WFR151000	Nut 6-32
2	WFR150300	Screw 10-16 x 1/2 in (Hex Washer TEK Crimptite®)	7	WFR154002	Push-On Fastener 1/8 in	12	WFR150001	Screw 6-32 x 1/2 in
3	WFR122200	Service Switch	8	WFR319200	Sail Switch Bracket ONLY	13	WFR130201	Thermostat Hi-Limit Reset Switch 330°
4	WFR150303	Screw #4 x 3/4 in	9	WFR142809	Pipe 1/2 x 29 1/8 in			
5	WFR105500	Sail Switch Rod Assembly	10	WFR319704	Hi-Limit Mounting Bracket			

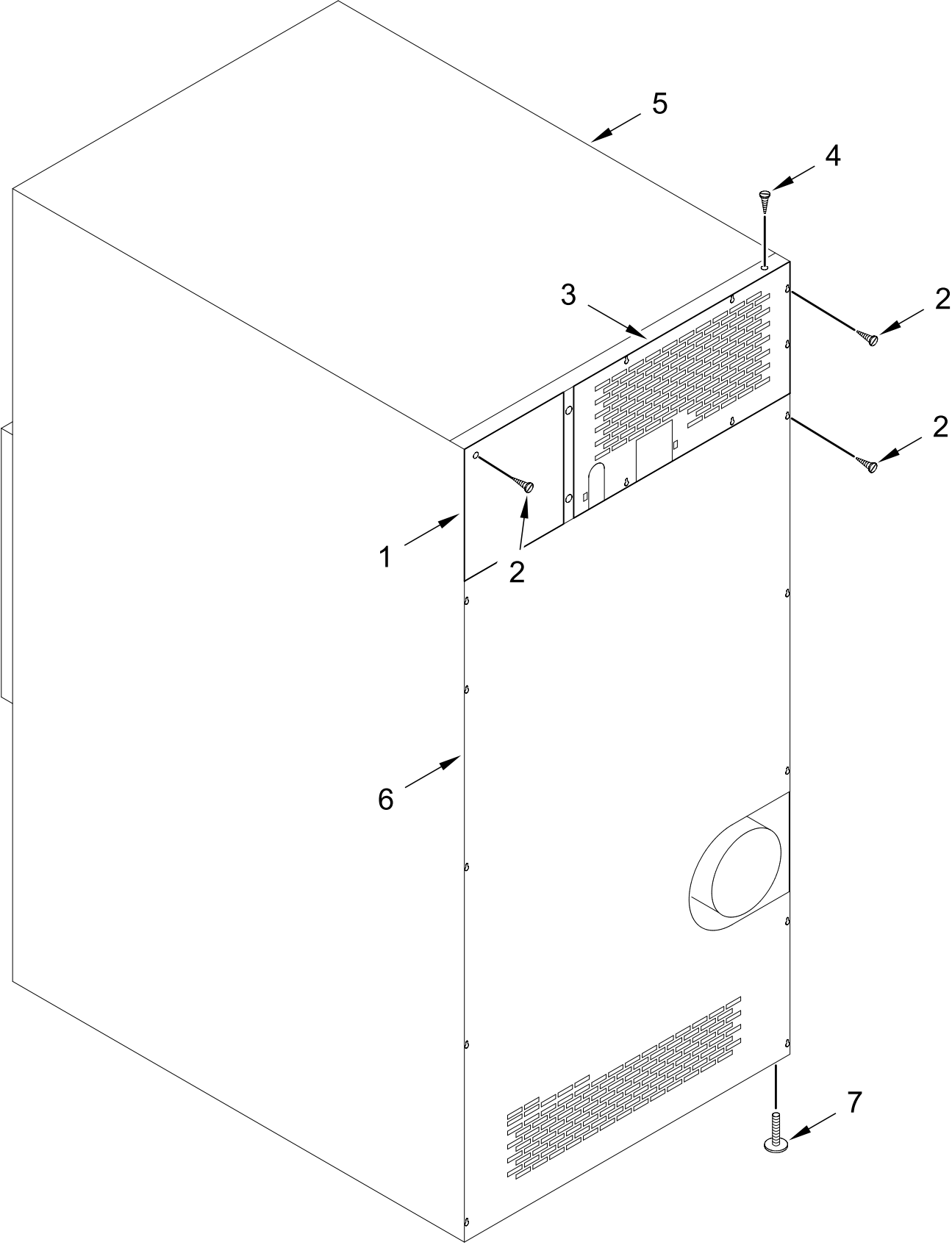
120V (1Ø) REAR ELECTRICAL PANEL ASSEMBLY



120V (1Ø) REAR ELECTRICAL PANEL ASSEMBLY

<u>Illus.</u> <u>No.</u>	<u>Part No.</u>	<u>Description</u>	<u>Illus.</u> <u>No.</u>	<u>Part No.</u>	<u>Description</u>	<u>Illus.</u> <u>No.</u>	<u>Part No.</u>	<u>Description</u>
1	WFR398301	Rear Electric Panel	6	WFR150301	Screw 8-18 x 7/16 in	10	WFR121010	Lug Terminal 14-4 (Ground)
2	WFR120766	Terminal Block Bracket	7	WFR824081	RC Network Assembly	11	WFR120910	Screw 10-32 x 3/8 in
3	WFR120758	Terminal Block	8	WFR132498	DP Contactor 24V 2-Pole			
4	WFR136101	Fuse 800mA (SLO-BLO)	9	WFR132109	Transformer – 24 vac Assembly (for 120V 60 Hz Models Only)			
5	WFR136008	Fuse Block						

OUTER TOP / BACK GUARD ASSEMBLIES



OUTER TOP / BACK GUARD ASSEMBLIES

<u>Illus.</u> <u>No.</u>	<u>Part No.</u>	<u>Description</u>	<u>Illus.</u> <u>No.</u>	<u>Part No.</u>	<u>Description</u>	<u>Illus.</u> <u>No.</u>	<u>Part No.</u>	<u>Description</u>
1	WFR322935	Electrical Box Cover	4	WFR150300	Screw 10-16 x 1/2 in (Hex Washer TEK Crimptite®)	6	WFR322082	Bottom Back Guard
2	WFR150301	Screw 8-18 x 7/16 in				7	WFR103500	Adjustable Leveling Leg
3	WFR314424	Top Back Guard	5	WFR312533	Outer Top			