

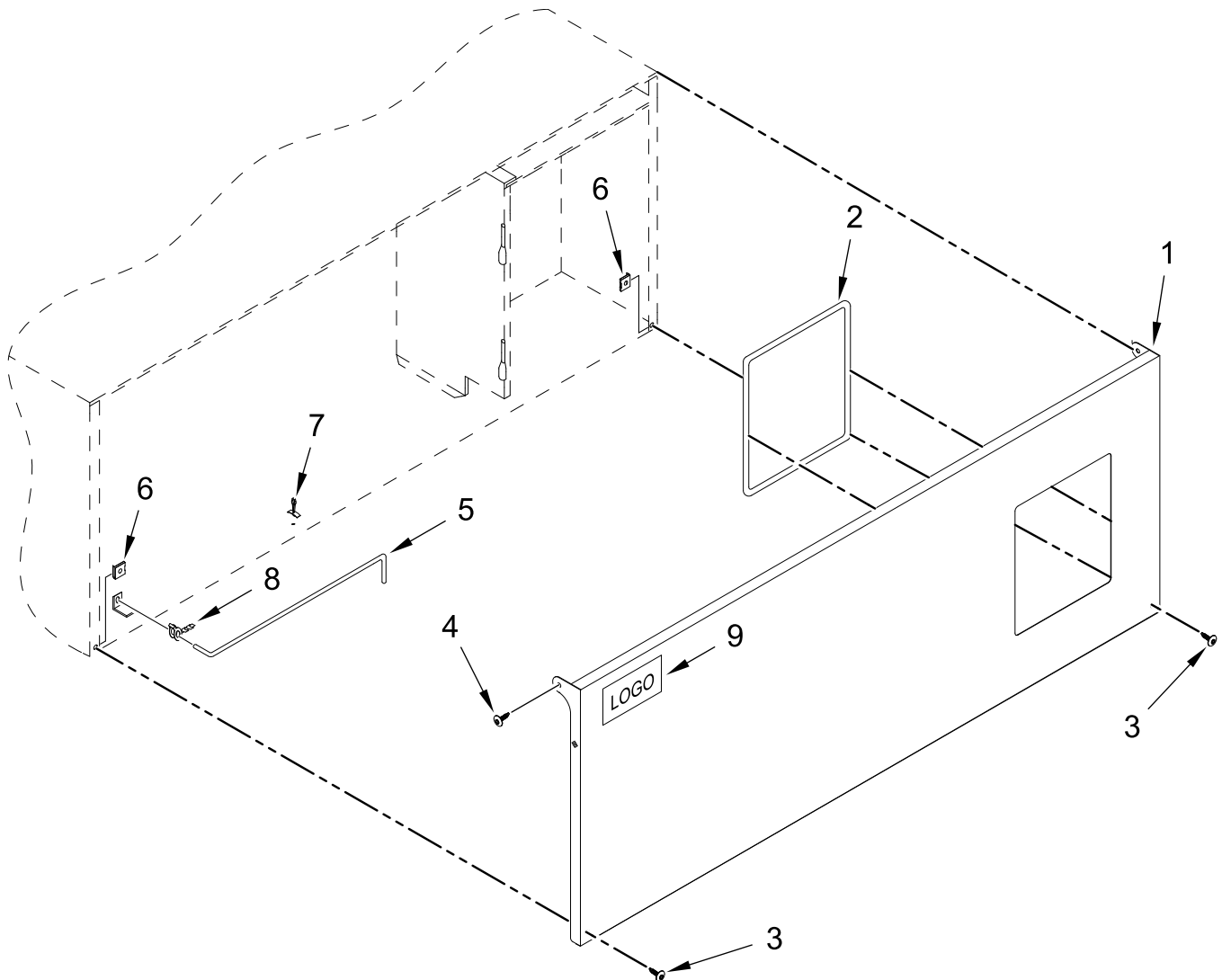


COMMERCIAL GAS DRYER MULTI-LOAD OPL SERVICE PARTS LIST

MODELS:

MDG50PNJWW. (as of January 2017)
MDG50MNWWW. (as of January 2017)

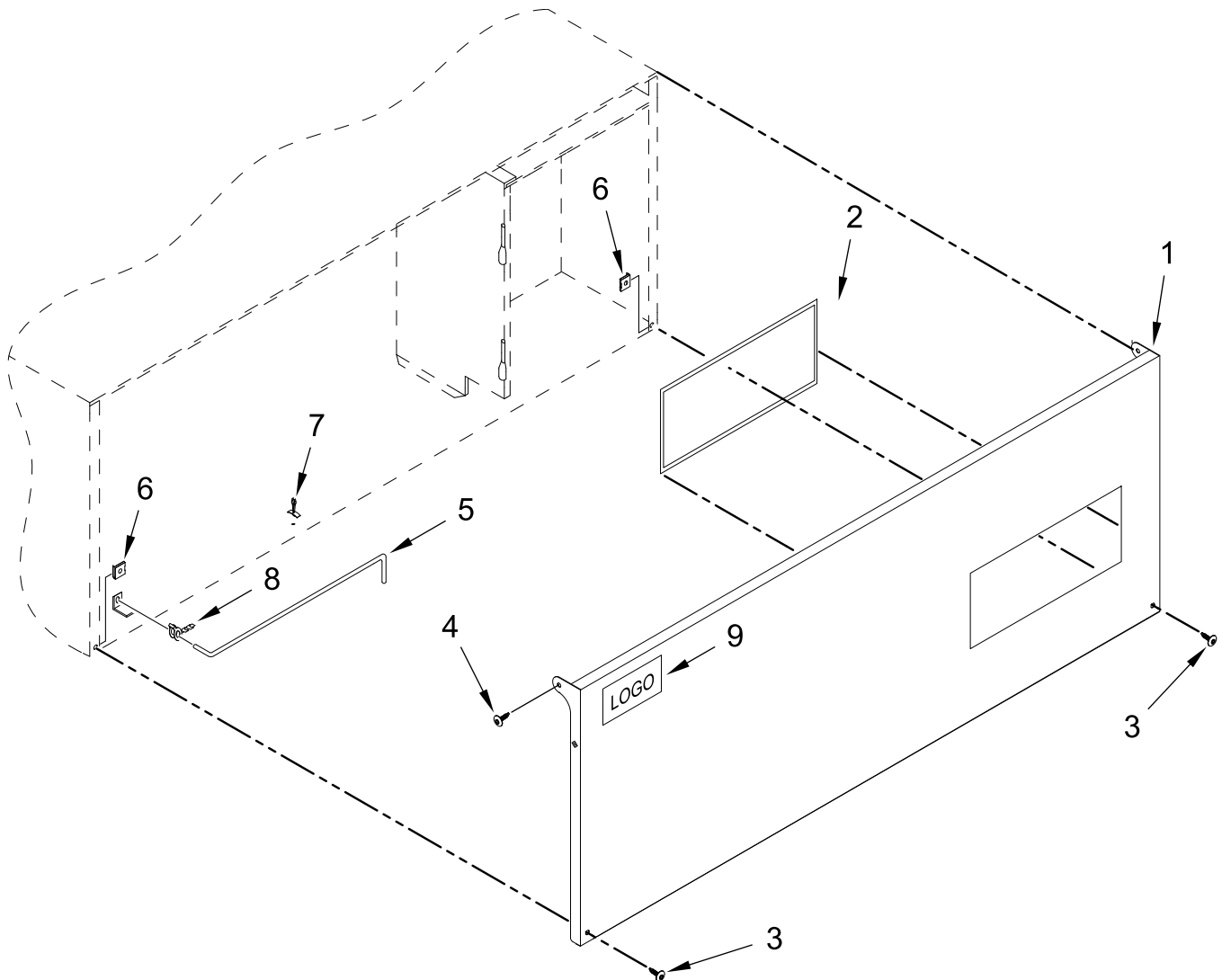
PN CONTROL DOOR ASSEMBLY



PN CONTROL DOOR ASSEMBLY

<u>Illus.</u> <u>No.</u>	<u>Part No.</u>	<u>Description</u>	<u>Illus.</u> <u>No.</u>	<u>Part No.</u>	<u>Description</u>	<u>Illus.</u> <u>No.</u>	<u>Part No.</u>	<u>Description</u>
1	WFR816755	OPL Control Door (includes No(s) 1 and 2)	4	WFR150317	Screw 10-32 x 1/4 in (TORX PLUS®)	8	WFR102601	Control Door Rod Retainer Clip
2	WFR117604	Foam Tape (When Ordering Specify Length, sold by the inch)	5	WFR102502	Control Door Support Rod	9	WFR112354	Maytag Badge
3	WFR150321	Screw 10-32 x 1/2 in	6	WFR154011	U-Nut 10-32			
			7	WFR102603	Control Door Rod Support Catch			

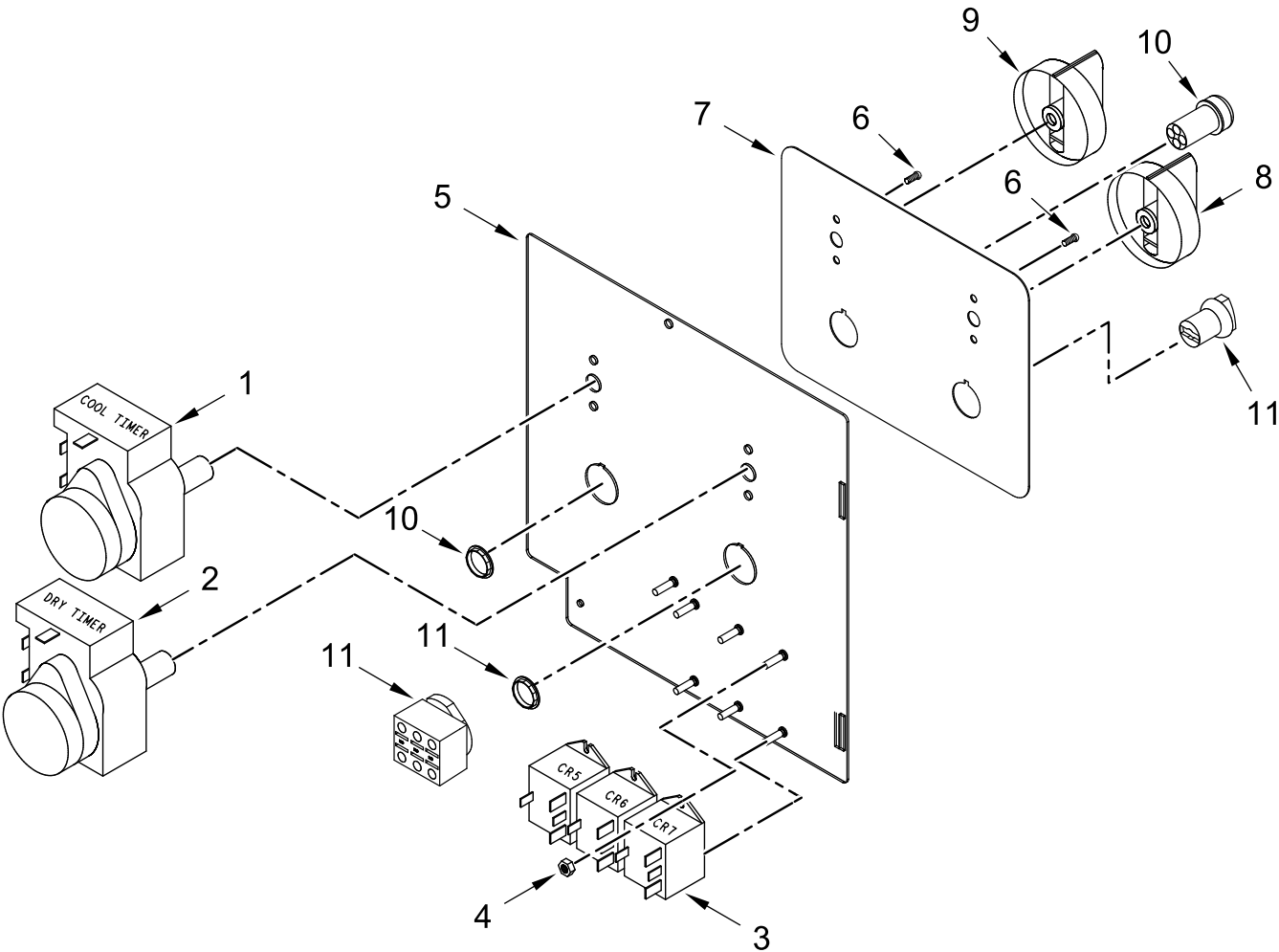
MN CONTROL DOOR ASSEMBLY



MN CONTROL DOOR ASSEMBLY

<u>Illus.</u> <u>No.</u>	<u>Part No.</u>	<u>Description</u>	<u>Illus.</u> <u>No.</u>	<u>Part No.</u>	<u>Description</u>	<u>Illus.</u> <u>No.</u>	<u>Part No.</u>	<u>Description</u>
1	WFR817286	Control Door (includes No(s) 1 and 2)	4	WFR150317	Screw 10-32 x 1/4 in (TORX PLUS®)	8	WFR102601	Control Door Rod Retainer Clip
2	WFR117604	Foam Tape (When Ordering Specify Length, sold by the inch)	5	WFR102502	Control Door Support Rod	9	WFR112354	Maytag Badge
3	WFR150321	Screw 10-32 x 1/2 in	6	WFR154011	U-Nut 10-32			
			7	WFR102603	Control Door Rod Support Catch			

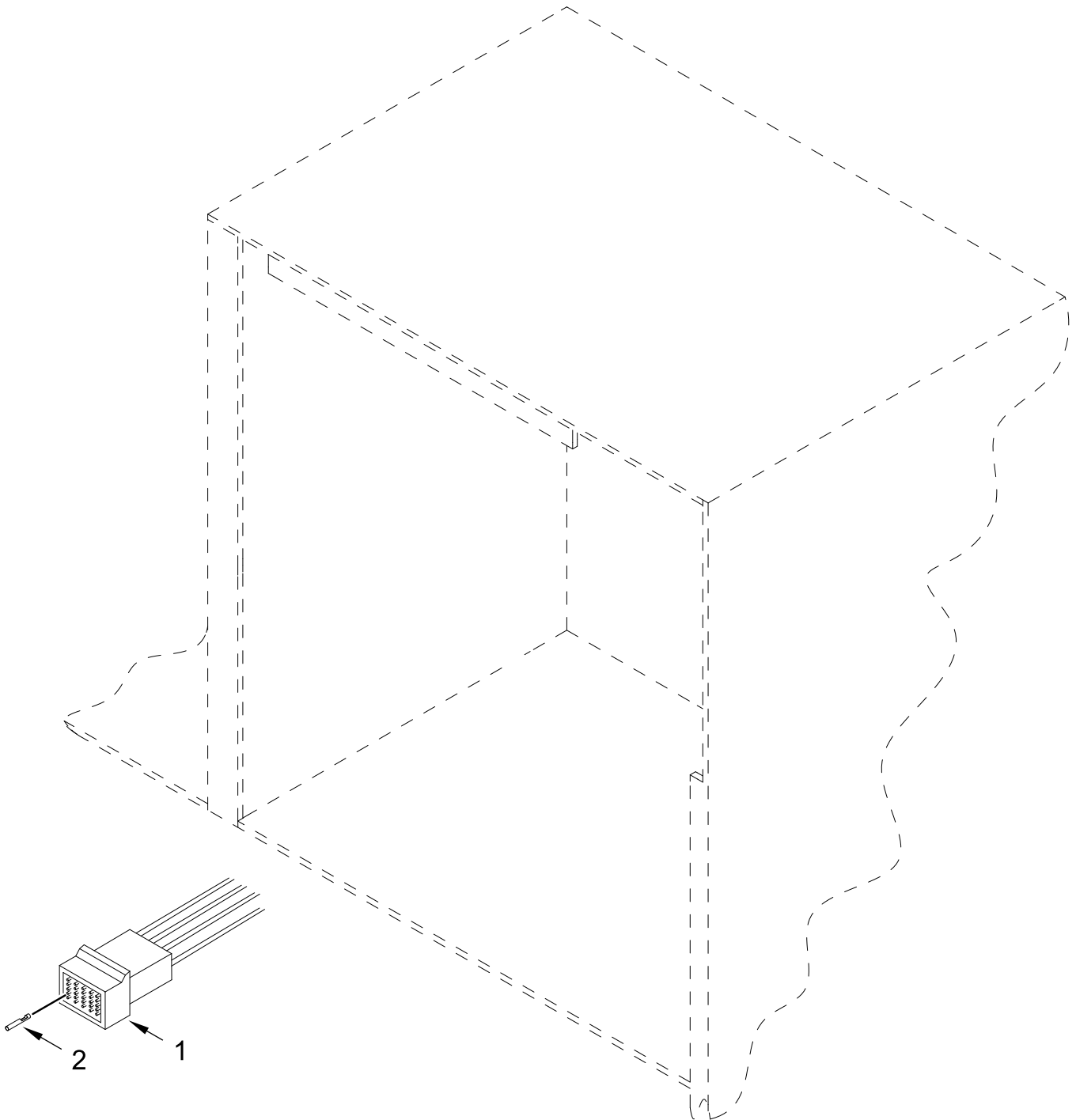
DUAL TIMER ASSEMBLY



DUAL TIMER ASSEMBLY

<u>Illus.</u> <u>No.</u>	<u>Part No.</u>	<u>Description</u>	<u>Illus.</u> <u>No.</u>	<u>Part No.</u>	<u>Description</u>	<u>Illus.</u> <u>No.</u>	<u>Part No.</u>	<u>Description</u>
1	WFR802837	15 Minute Timer with Terminals	6	WFR150110	Screw 8-32 x 1/4 in	11	WFR123549	Selector Switch (3 Position)
2	WFR802838	60 Minute Timer with Terminals	7	WFR112558	Dual Timer Cover Plate			(includes locking ring and connector)
3	WFR131428	Relay SPDT 24V	8	WFR124104	Pure Touch Knob with Red Pointer			
4	WFR152013	Nut 6-32	9	WFR124105	Pure Touch Knob with Blue Pointer			
5	WFR802840	Main Line Control Panel Assembly (includes No(s) 1 through 11)	10	WFR100299	Green Lighted Push Button with N.O. (includes locking ring)			
	WFR802836	Main Line Control Panel ONLY						

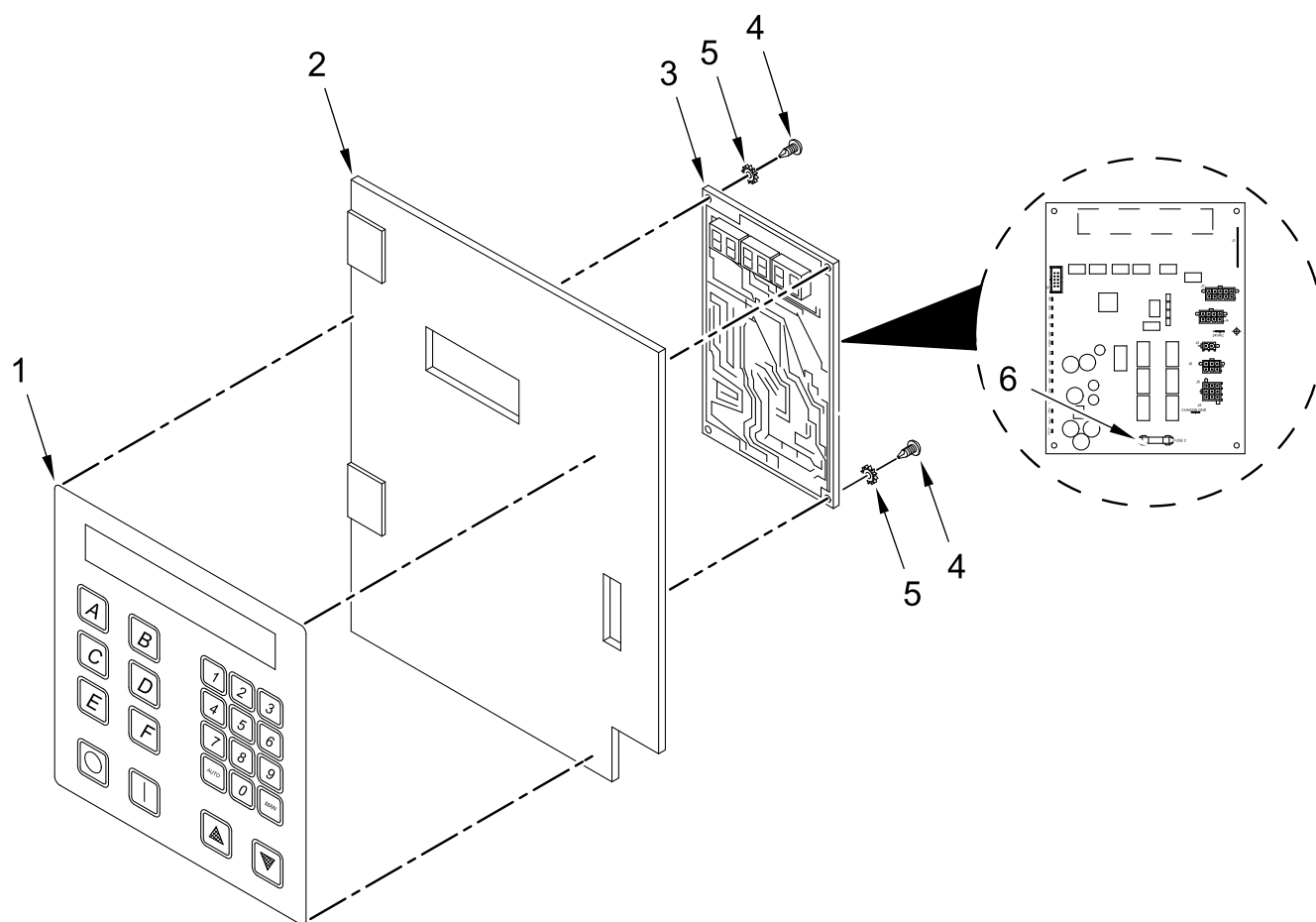
DUAL TIMER BOX ASSEMBLY



DUAL TIMER BOX ASSEMBLY

<u>Illus.</u> <u>No.</u>	<u>Part No.</u>	<u>Description</u>	<u>Illus.</u> <u>No.</u>	<u>Part No.</u>	<u>Description</u>
1	WFR122641	15 Pin Connector	3	WFR150301	Screw 8-18 x 7/16 in
2	WFR122706	Female Crimp Socket	4	WFR884252	Reversing Timer 24 Volt (for reversing Dual Timer models Only)
	WFR122801	Pin / Socket Extraction Tool (Not Illustrated)			

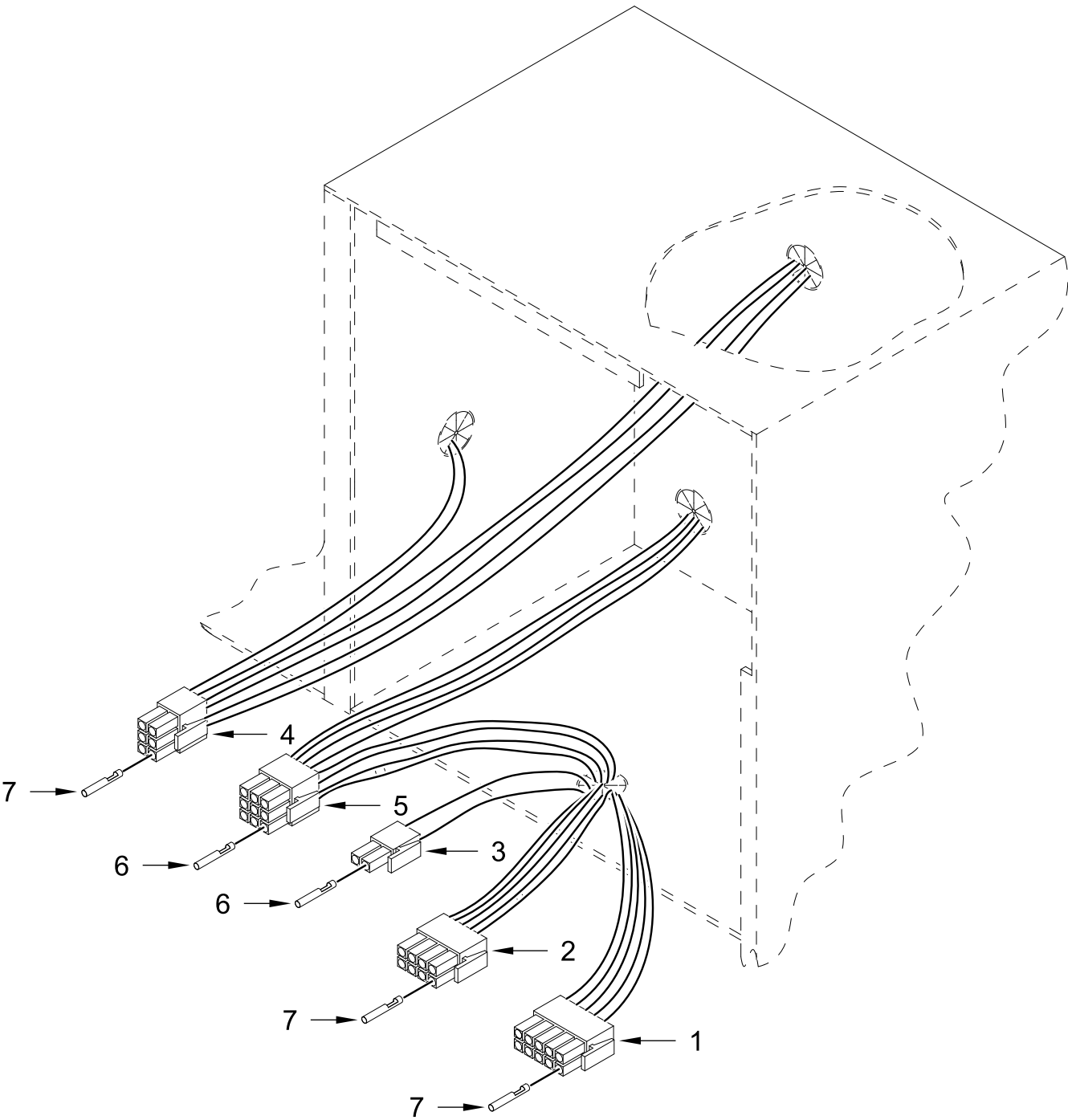
MICROPROCESSOR CONTROL PANEL ASSEMBLY



MICROPROCESSOR CONTROL PANEL ASSEMBLY

<u>Illus.</u> <u>No.</u>	<u>Part No.</u>	<u>Description</u>	<u>Illus.</u> <u>No.</u>	<u>Part No.</u>	<u>Description</u>	<u>Illus.</u> <u>No.</u>	<u>Part No.</u>	<u>Description</u>
1	WFR112577	Phase 7 OPL Keypad	3	WFR887003	Phase 7.2.2 Board	4	WFR150005	Screw 6-32 x 1/4 in
2	WFR814902	Phase 7 OPL Panel			(Sensor Activated Fire Extinguishing System and H2O Pressure Switch)	5	WFR153010	Lock Washer #6
						6	WFR136016	Fuse 5A (Fast Acting)

MICROPROCESSOR CONTROL BOX ASSEMBLY



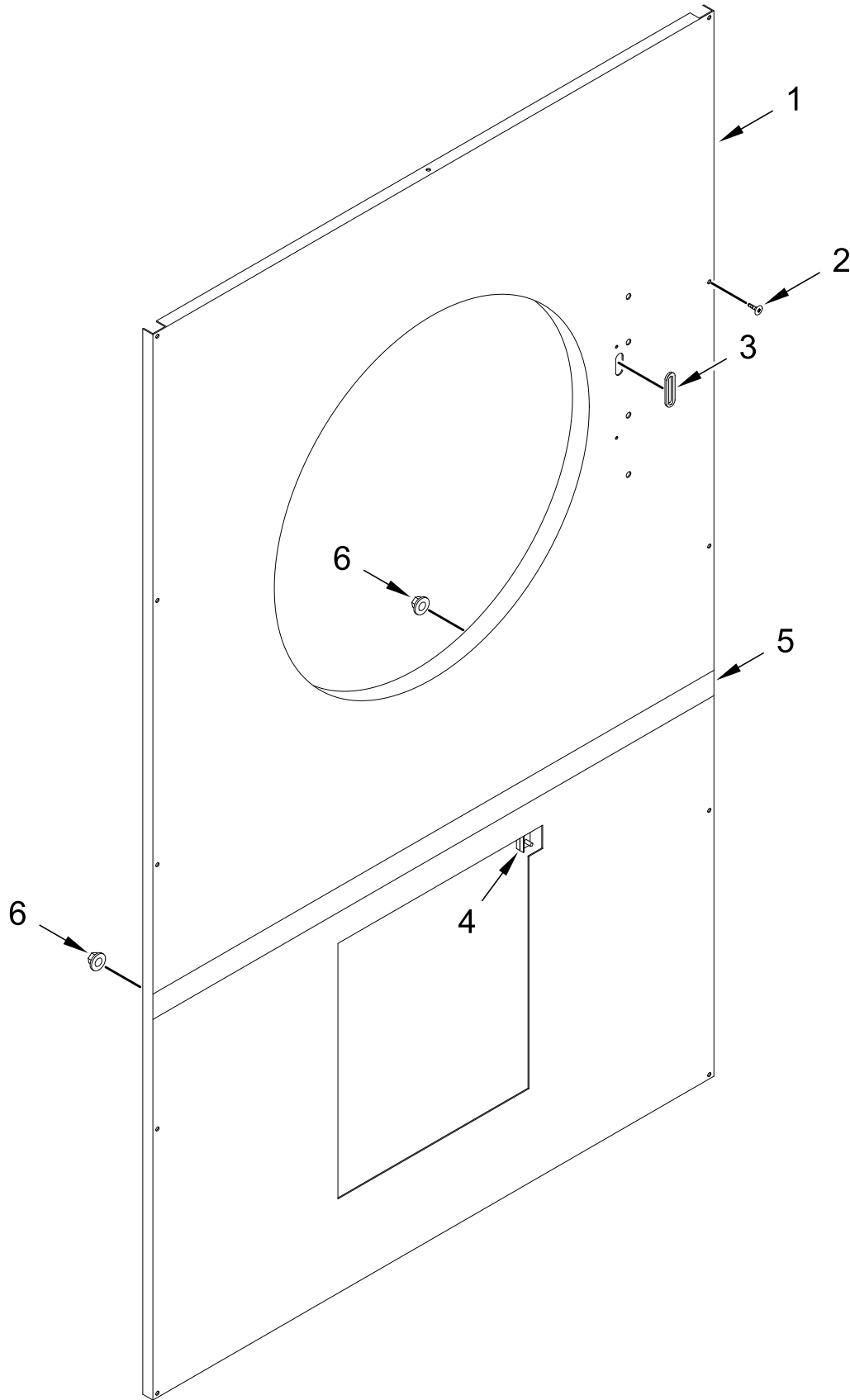
MICROPROCESSOR CONTROL BOX ASSEMBLY

<u>Illus.</u> <u>No.</u>	<u>Part No.</u>	<u>Description</u>
1	WFR122681	10 Pin Connector
2	WFR122676	8 Pin Connector

<u>Illus.</u> <u>No.</u>	<u>Part No.</u>	<u>Description</u>
3	WFR122646	2 Pin Connector
4	WFR122683	6 Pin Connector
5	WFR122640	9 Pin Connector

<u>Illus.</u> <u>No.</u>	<u>Part No.</u>	<u>Description</u>
6	WFR122706	Female Crimp Socket
7	WFR122669	Female Crimp Socket

FRONT PANEL ASSEMBLY



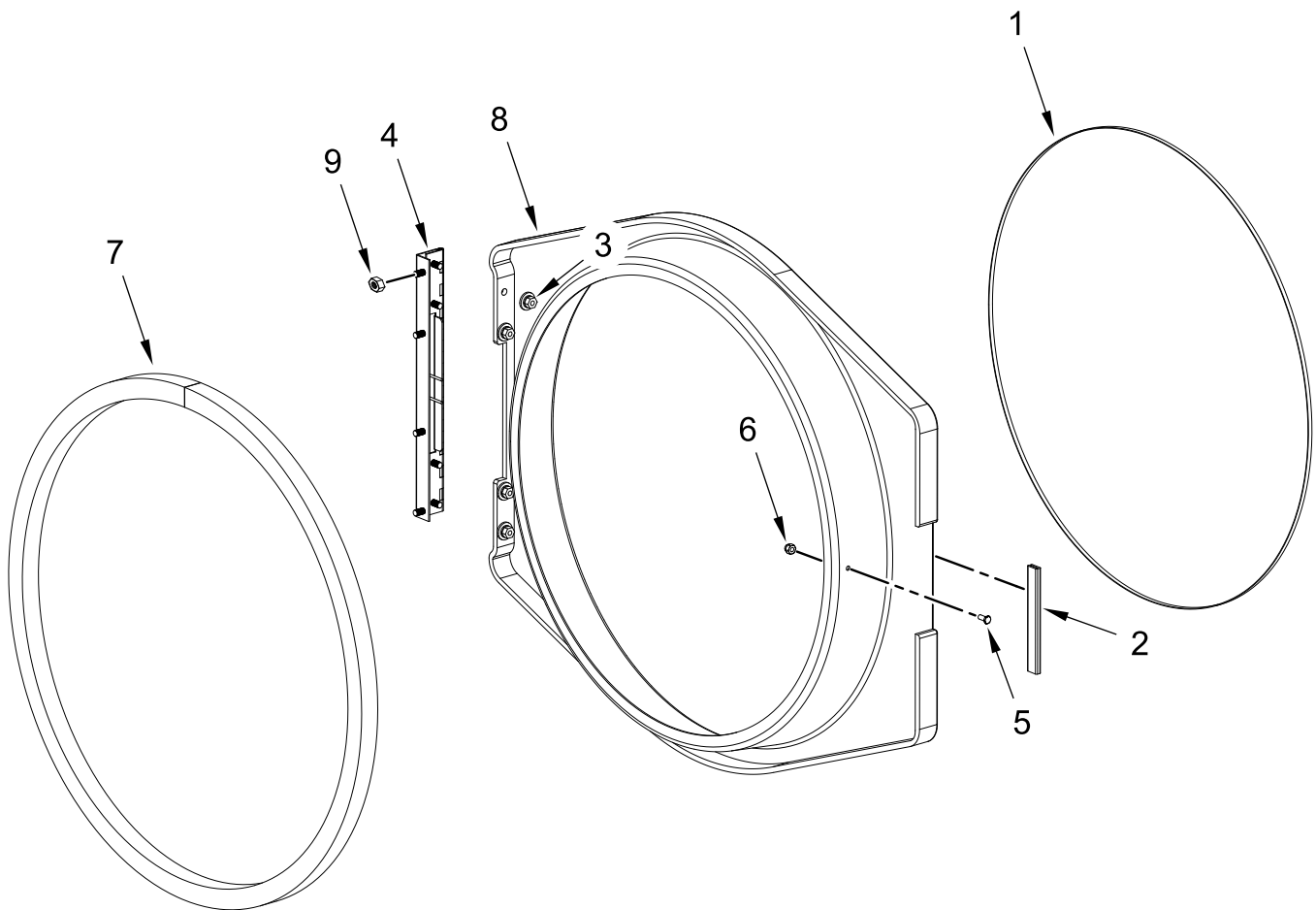
FRONT PANEL ASSEMBLY

<u>Illus.</u> <u>No.</u>	<u>Part No.</u>	<u>Description</u>
1	WFR825625	Front Panel Assembly
2	WFR150309	Screw 10-16 x 1/2 in (Hex Head TEK Crimptite®)

<u>Illus.</u> <u>No.</u>	<u>Part No.</u>	<u>Description</u>
3	WFR121405	Rubber Grommet
4	WFR122116	Door Switch

<u>Illus.</u> <u>No.</u>	<u>Part No.</u>	<u>Description</u>
5	WFR817185	Trim, Inner
6	WFR152014	Serrated Hex Flange Nut 1/4-20

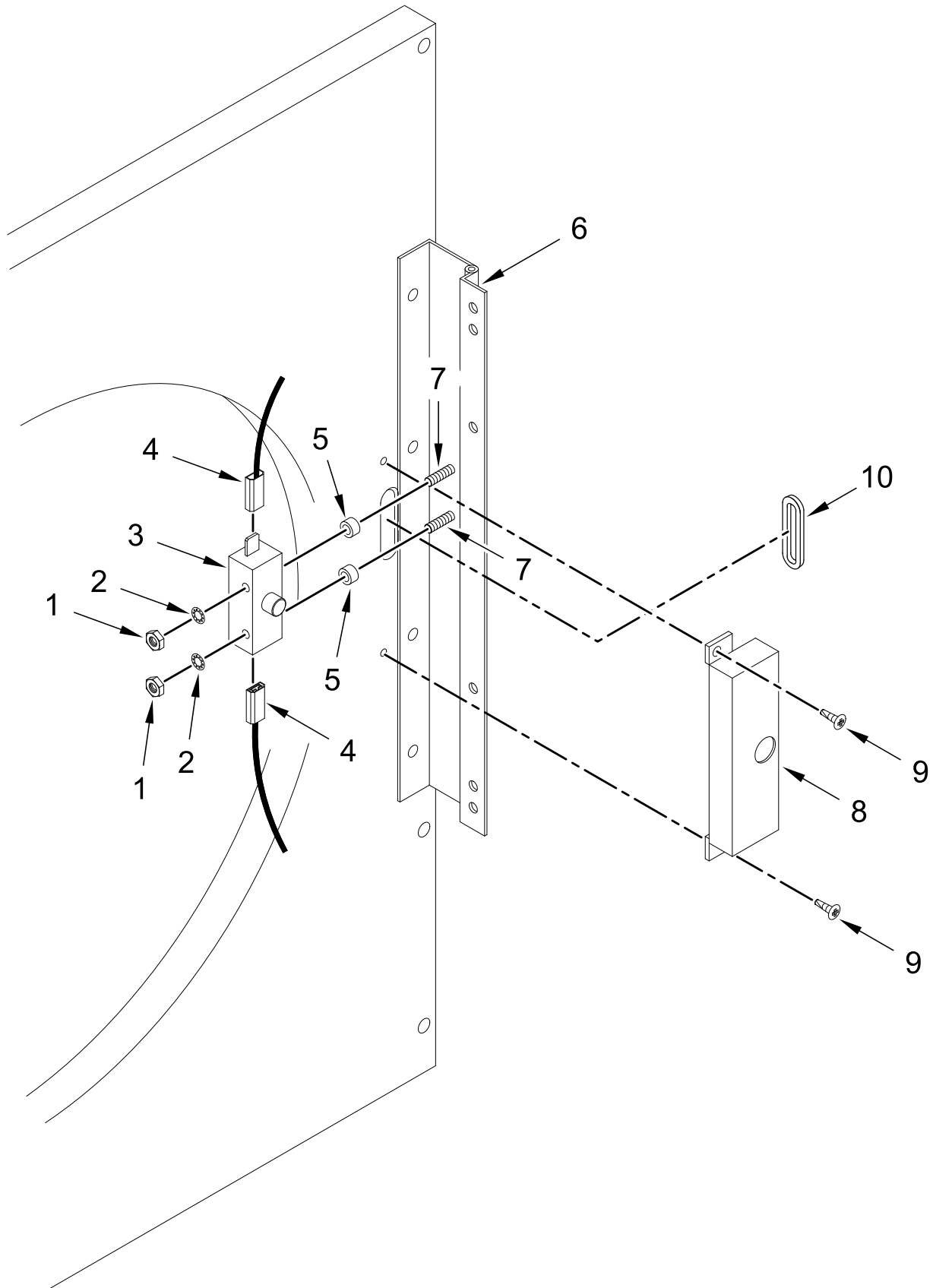
MAIN DOOR ASSEMBLY



MAIN DOOR ASSEMBLY

<u>Illus.</u> <u>No.</u>	<u>Part No.</u>	<u>Description</u>	<u>Illus.</u> <u>No.</u>	<u>Part No.</u>	<u>Description</u>	<u>Illus.</u> <u>No.</u>	<u>Part No.</u>	<u>Description</u>
1	WFR102210	Door Glass	5	WFR150120	Screw 10-32 x 7/16 in	8	WFR882991	Black Main Door Assembly with Hinge Assembly
2	WFR102328	Handle Edge	6	WFR151010	Nut 10-32 (Black)			(includes No(s) 1 through 8)
3	WFR152014	Serrated Hex Flange Nut 1/4-20	7	WFR102349	Door Gasket	9	WFR152014	Serrated Hex Flange Nut 1/4-20
4	WFR814756	Main Door Hinge Assembly						

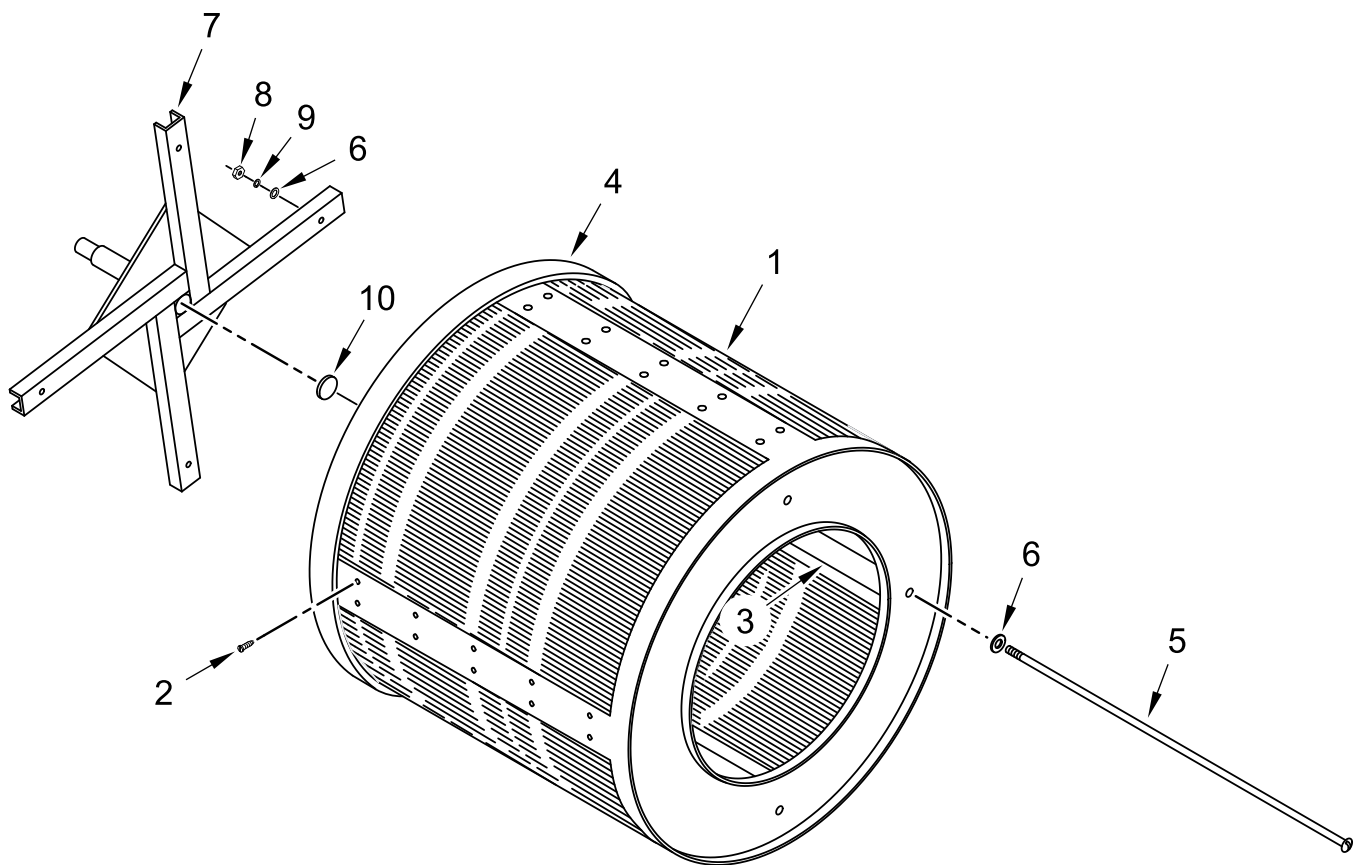
MAIN DOOR SWITCH ASSEMBLY



MAIN DOOR SWITCH ASSEMBLY

<u>Illus.</u> <u>No.</u>	<u>Part No.</u>	<u>Description</u>	<u>Illus.</u> <u>No.</u>	<u>Part No.</u>	<u>Description</u>	<u>Illus.</u> <u>No.</u>	<u>Part No.</u>	<u>Description</u>
1	WFR152013	Nut 6-32	5	WFR154281	Standard Nylon Spacer 3/8 in	8	WFR313218	Main Door Switch Housing ONLY
2	WFR153010	Lock Washer #6				9	WFR150201	Screw 10-32 x 1/4 in
3	WFR137005	Switch, Single Pole Door	6	WFR814756	Main Door Hinge Assembly	10	WFR121405	Rubber Grommet
4	WFR121028	Insulated Female Terminal	7	WFR153565	Self Clinching Stud 6-32 x 1 in			

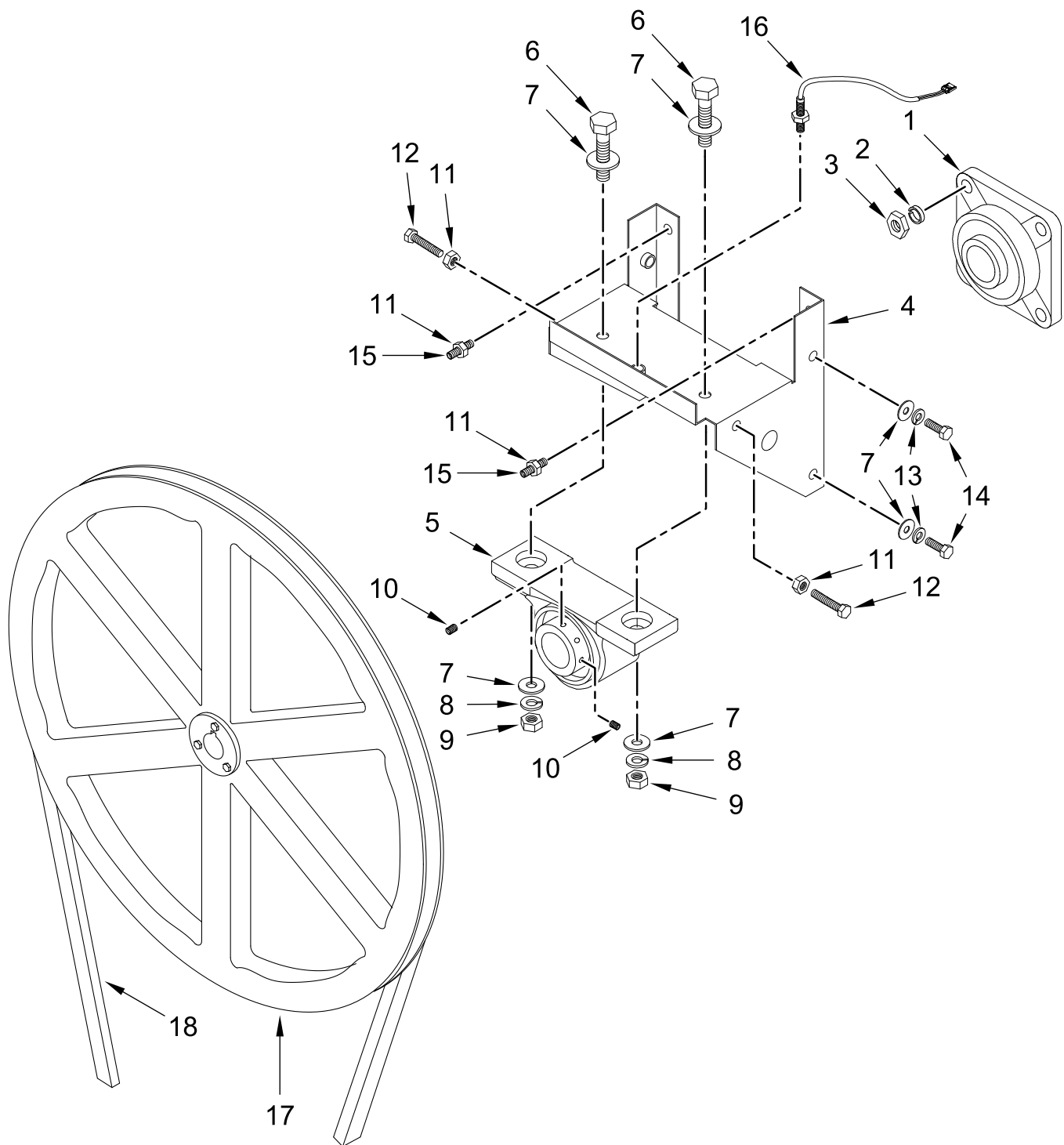
TUMBLER / SUPPORT ASSEMBLIES



TUMBLER / SUPPORT ASSEMBLIES

<u>Illus.</u> <u>No.</u>	<u>Part No.</u>	<u>Description</u>	<u>Illus.</u> <u>No.</u>	<u>Part No.</u>	<u>Description</u>	<u>Illus.</u> <u>No.</u>	<u>Part No.</u>	<u>Description</u>
1	WFR800837	Tumbler and Support Assembly Complete (without Felt Collar) (includes No(s) 1 to 3, and 5 to 10)	3	WFR301302	Galvanized Short Tumbler Rib	8	WFR152005	Nut 3/8-16
	WFR800838	Tumbler ONLY (without Felt Collar)		WFR301311	Galvanized Tall Tumbler Rib	9	WFR153005	Split Lock Washer 3/8 in
2	WFR150313	Screw 10-16 x 1/2 in (TORX®)	4	WFR116001	Felt Collar	10	WFR115986	Felt Tumbler Pad
	WFR150429	TORX® Hand Driver T25 (for removal of TORX® head screw)		WFR401010	Adhesive for Felt Collar (5 oz. tube)			
			5	WFR100903	Tie Rod 3/8-16 x 38-1/2 in			
			6	WFR153004	Washer 3/8 x 1 in			
			7	WFR850059	Tumbler Support ONLY			

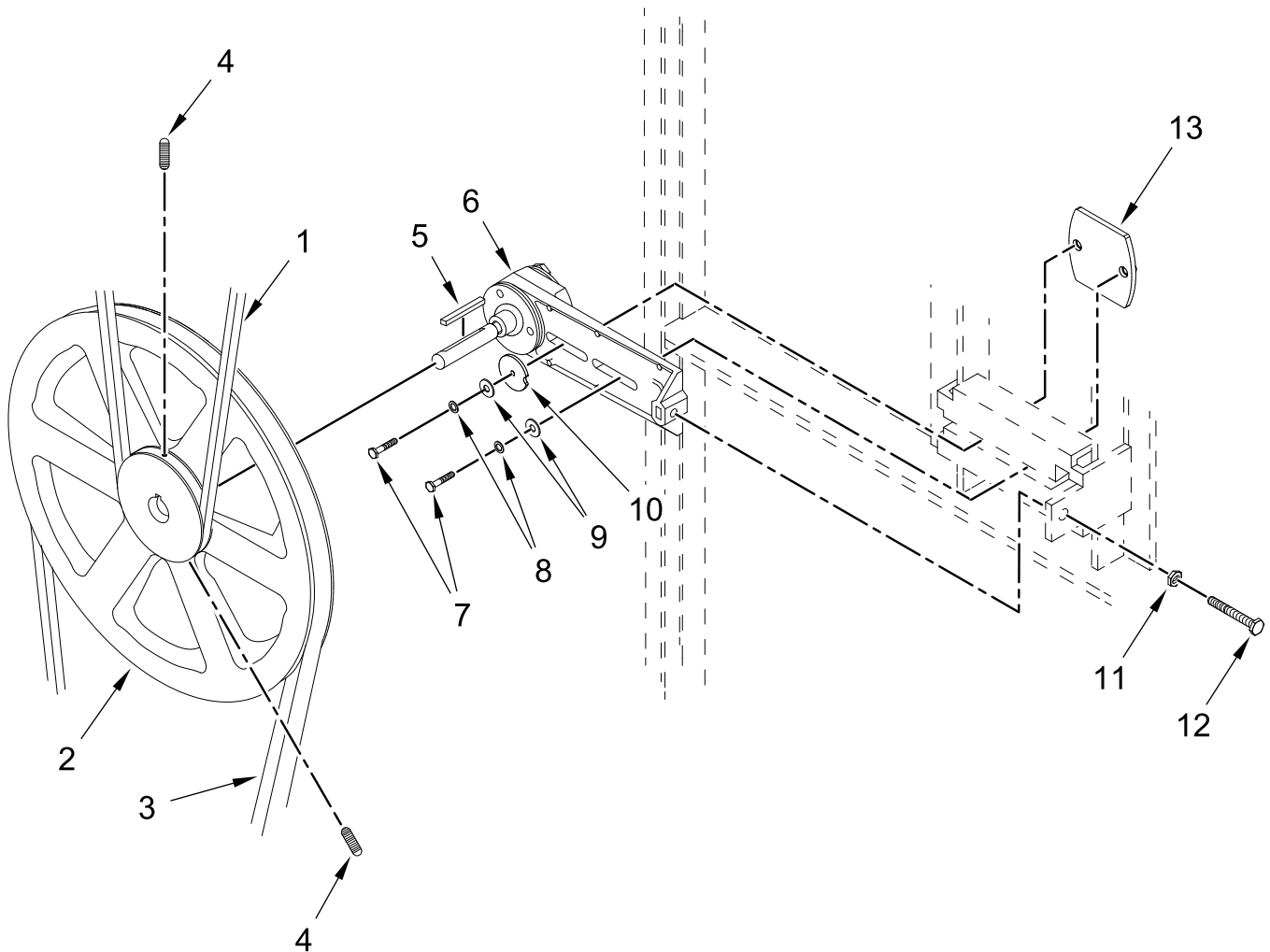
TUMBLER BEARING ASSEMBLY



TUMBLER BEARING ASSEMBLY

<u>Illus.</u> <u>No.</u>	<u>Part No.</u>	<u>Description</u>	<u>Illus.</u> <u>No.</u>	<u>Part No.</u>	<u>Description</u>	<u>Illus.</u> <u>No.</u>	<u>Part No.</u>	<u>Description</u>
1	WFR880220	Flange Bearing 1 3/4 in	7	WFR153004	Washer 3/8 x 1 in	14	WFR150501	Tap Bolt 5/16-18 x 3/4 in
2	WFR153025	Split Lock Washer 9/16 in	8	WFR153005	Split Lock Washer 3/8 in	15	WFR150610	Set Screw 5/16-18 x 1 1/2 in
3	WFR152050	Nut 9/16-12	9	WFR152005	Nut 3/8-16	16	WFR822735	Rotational Sensor Assembly
4	WFR883387	Bearing Assembly Complete	10	WFR102120	Sintered 8 Magnet	17	WFR101100	Pulley 18 in
	WFR800980	Bearing Support ONLY	11	WFR152004	Nut 5/16-18	18	WFR100100	V-Belt 5L660R
			12	WFR150621	Tap Bolt 5/16-18 x 1 1/2 in			
5	WFR883710	Pillow Block Bearing 1-3/8 in	13	WFR153002	Split Lock Washer 5/16 in			
6	WFR150601	Bolt 3/8 x 2 in						

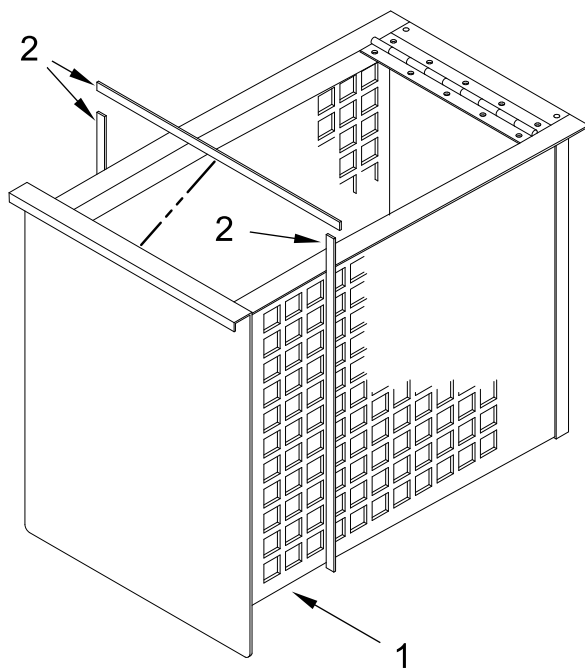
IDLER BEARING ASSEMBLY



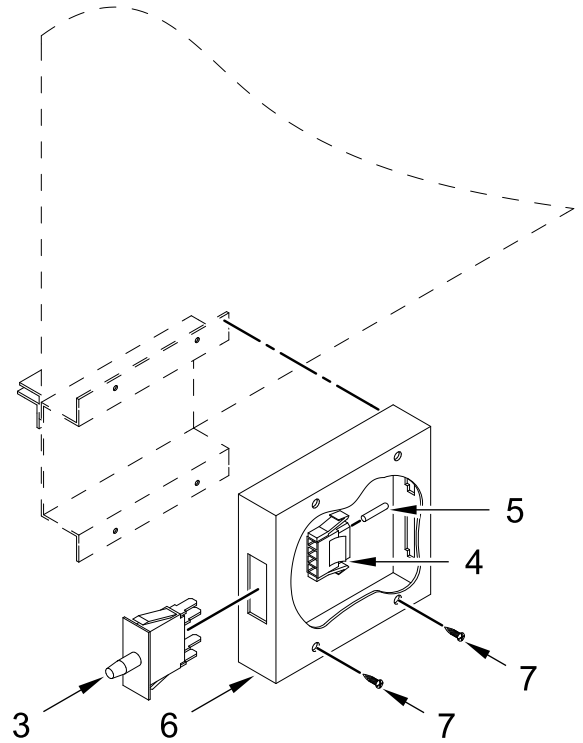
IDLER BEARING ASSEMBLY

<u>Illus.</u> <u>No.</u>	<u>Part No.</u>	<u>Description</u>	<u>Illus.</u> <u>No.</u>	<u>Part No.</u>	<u>Description</u>	<u>Illus.</u> <u>No.</u>	<u>Part No.</u>	<u>Description</u>
1	WFR100100	V-Belt 5L660R	6	WFR882576	Idler Bearing Assembly Complete	9	WFR153004	Washer 3/8 x 1 in
2	WFR101129	Pulley				10	WFR801009	Idler Square Washer
3	WFR100105	V-Belt 4L520R			(includes No(s) 5 through 12)	11	WFR152004	Nut 5/16-18
4	WFR154301	Set Screw 5/16-18 x 1 in	7	WFR150617	Bolt 3/8-16 x 1 in	12	WFR150509	Bolt 5/16-18 x 3 in
5	WFR100705	Key 3/16 x 3/16 x 1 3/8 in	8	WFR153005	Split Lock Washer 3/8 in			

LINT DRAWER / SWITCH ASSEMBLIES



Lint Drawer

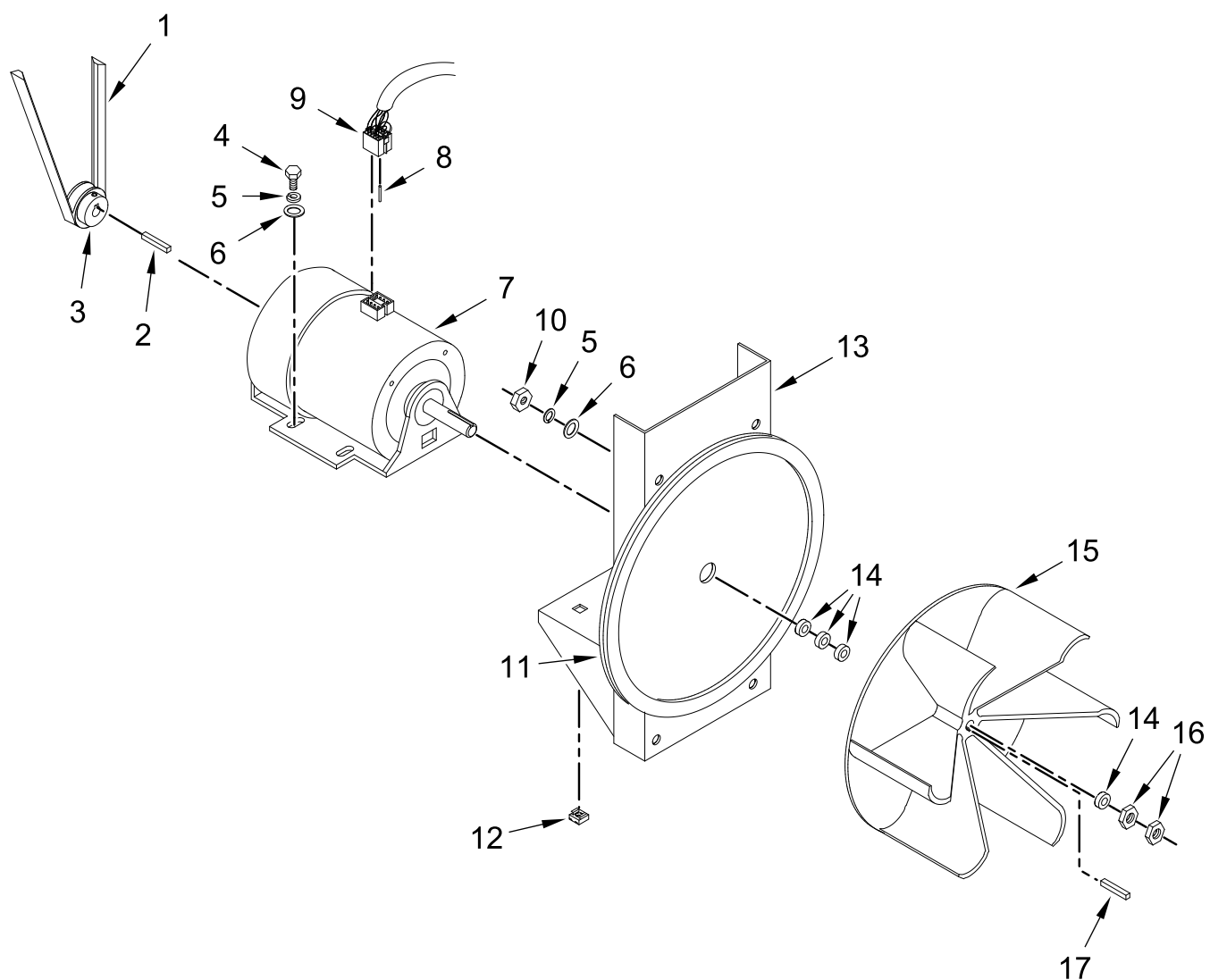


Lint Drawer Switch Assy

LINT DRAWER / SWITCH ASSEMBLIES

<u>Illus.</u> <u>No.</u>	<u>Part No.</u>	<u>Description</u>	<u>Illus.</u> <u>No.</u>	<u>Part No.</u>	<u>Description</u>	<u>Illus.</u> <u>No.</u>	<u>Part No.</u>	<u>Description</u>
1	WFR883716	White Lint Drawer Assembly	5	WFR122701	Female Crimp Socket	6	WFR818087	Lint Drawer Switch Box Assembly
2	WFR117604	Foam Tape (When Ordering Specify Length, sold by the inch)		WFR122801	Pin / Socket Extraction Tool (Not Illustrated)			(includes No(s) 3 through 6)
3	WFR122116	Door Switch					WFR304136	Lint Drawer Switch Box Cover ONLY
4	WFR122605	4 Pin Connector				7	WFR150301	Screw 8-18 x 7/16 in

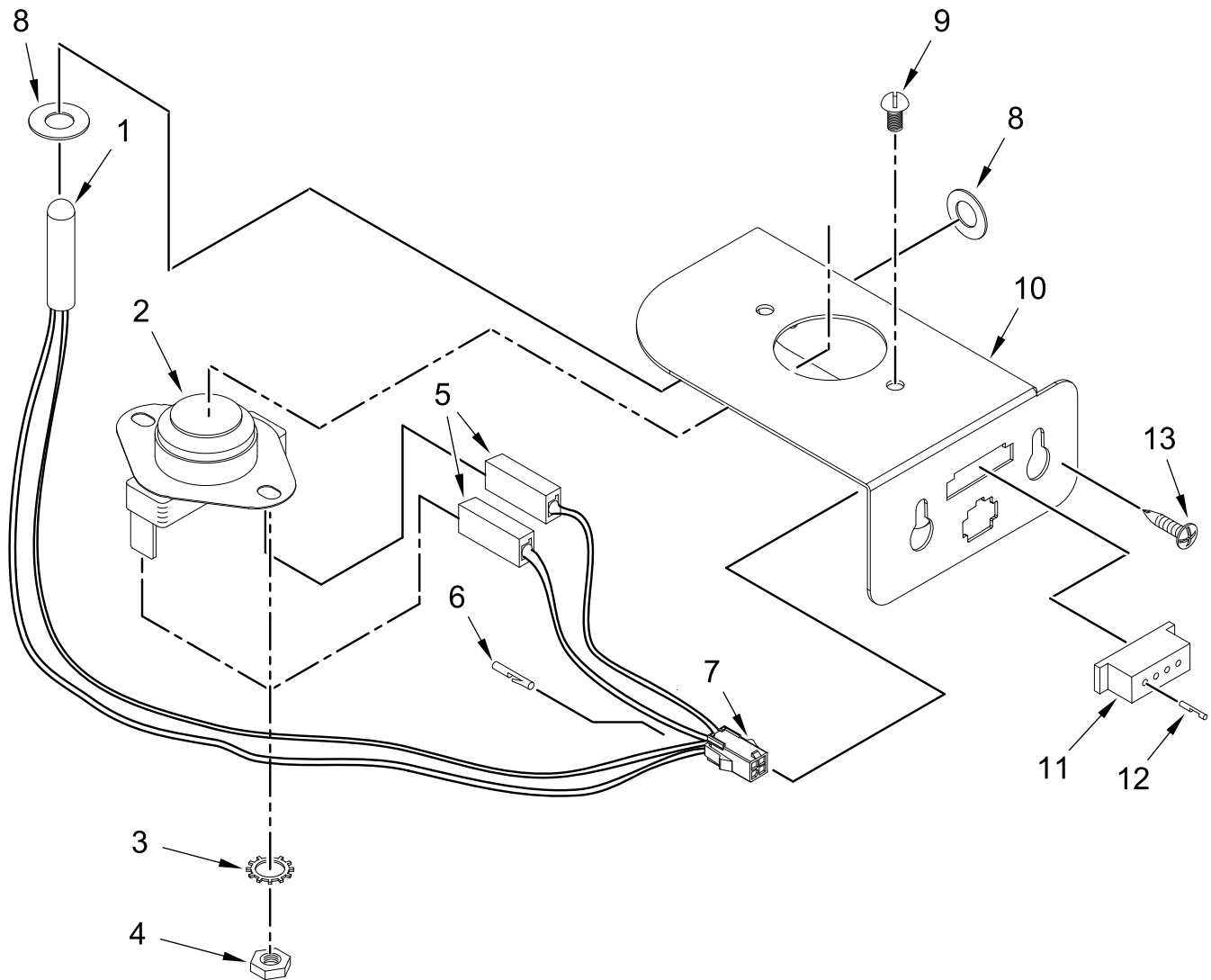
NON-REVERSING MOTOR MOUNT ASSEMBLY



NON-REVERSING MOTOR MOUNT ASSEMBLY

<u>Illus.</u> <u>No.</u>	<u>Part No.</u>	<u>Description</u>	<u>Illus.</u> <u>No.</u>	<u>Part No.</u>	<u>Description</u>	<u>Illus.</u> <u>No.</u>	<u>Part No.</u>	<u>Description</u>
1	WFR100105	V-Belt 4L520R	7	WFR100069	Motor with Plug 3/4 hp 115-230v 1ø 60 Hz	11	WFR117604	Foam Tape (When Ordering Specify Length, sold by the inch)
2	WFR100701	Key 3/16 X 3/16 X 1 in		WFR817029	Motor Assembly Complete	12	WFR154000	Tinnerman® Nut 5/16-18
3	WFR101132	Motor Pulley 2 x 5/8 in			(includes No(s) 2 through 16)	13	WFR850017	Motor Mount ONLY
4	WFR150501	Tap Bolt 5/16-18 x 3/4 in	8	WFR122701	Female Crimp Socket	14	WFR153050	Washer 1/2 x 1 1/6 in
5	WFR153002	Split Lock Washer 5/16 in		WFR122801	Pin / Socket Extraction Tool (Not Illustrated)	15	WFR100604	Impellor 12 1/2 in
6	WFR153001	Washer 5/16 in	9	WFR137030	8 Pin Connector	16	WFR152006	Nut 1/2-20
			10	WFR152004	Nut 5/16-18			

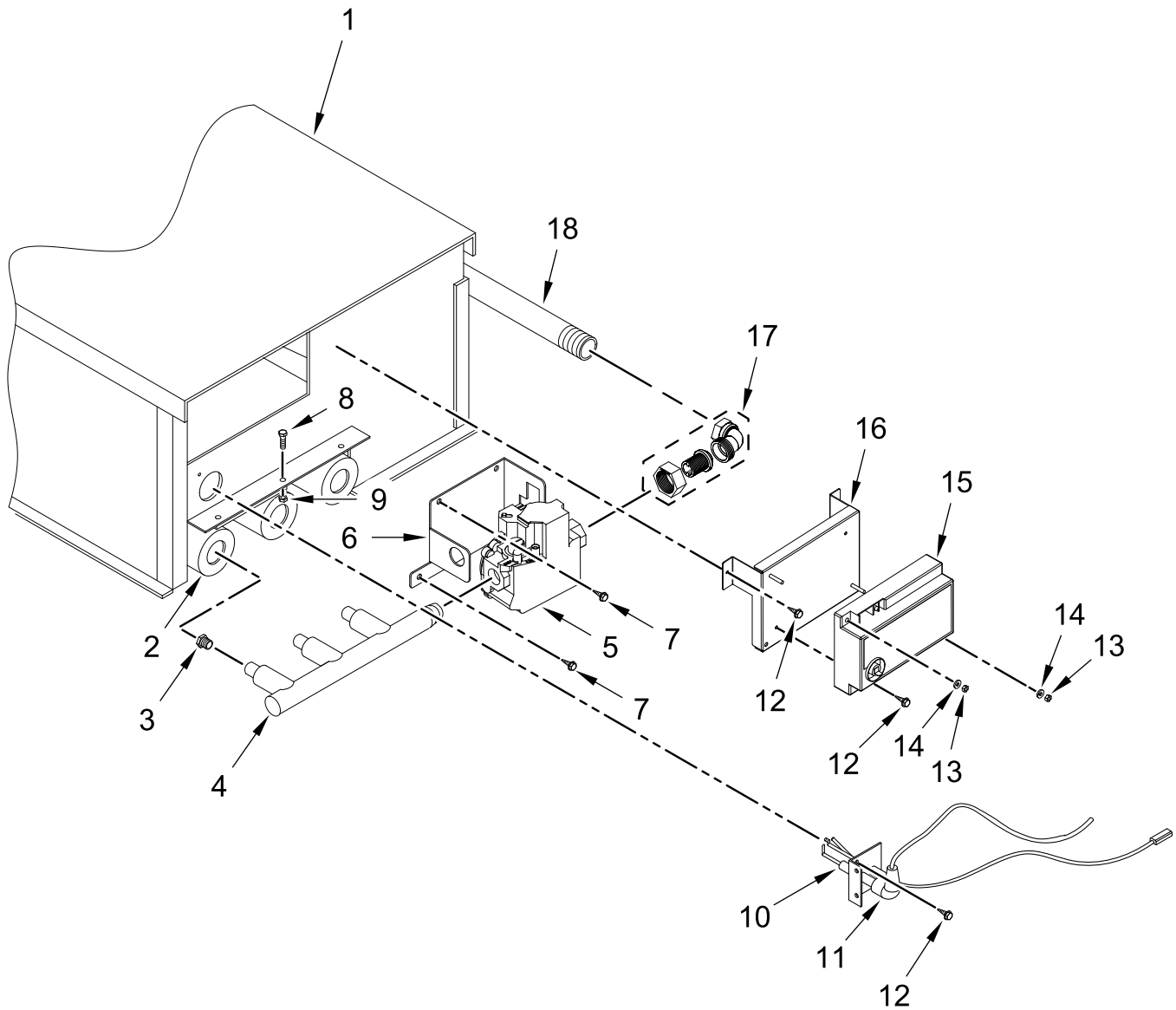
SENSOR BRACKET ASSEMBLY



SENSOR BRACKET ASSEMBLY

<u>Illus.</u> <u>No.</u>	<u>Part No.</u>	<u>Description</u>	<u>Illus.</u> <u>No.</u>	<u>Part No.</u>	<u>Description</u>	<u>Illus.</u> <u>No.</u>	<u>Part No.</u>	<u>Description</u>
1	WFR884614	Temperature Sensor Probe Assembly (includes No(s) 1 and 5 through 8)	7	WFR122649	4 Pin Connector	12	WFR122706	Female Crimp Socket
2	WFR130103	Hi-Limit Thermostat 225°	8	WFR154007	Push On Fastener 1/4 in	13	WFR150301	Screw 8-18 x 7/16 in
3	WFR153010	Lock Washer #6	9	WFR150005	Screw 6-32 x 1/4 in			
4	WFR152000	Nut 6-32	10	WFR805837	Temperature Sensor Assembly Complete (includes No(s) 1 through 10)			
5	WFR121028	Insulated Female Terminal		WFR322214	Temperature Sensor Bracket ONLY			
6	WFR122643	Pin Crimp Socket	11	WFR122648	4 Pin Connector			

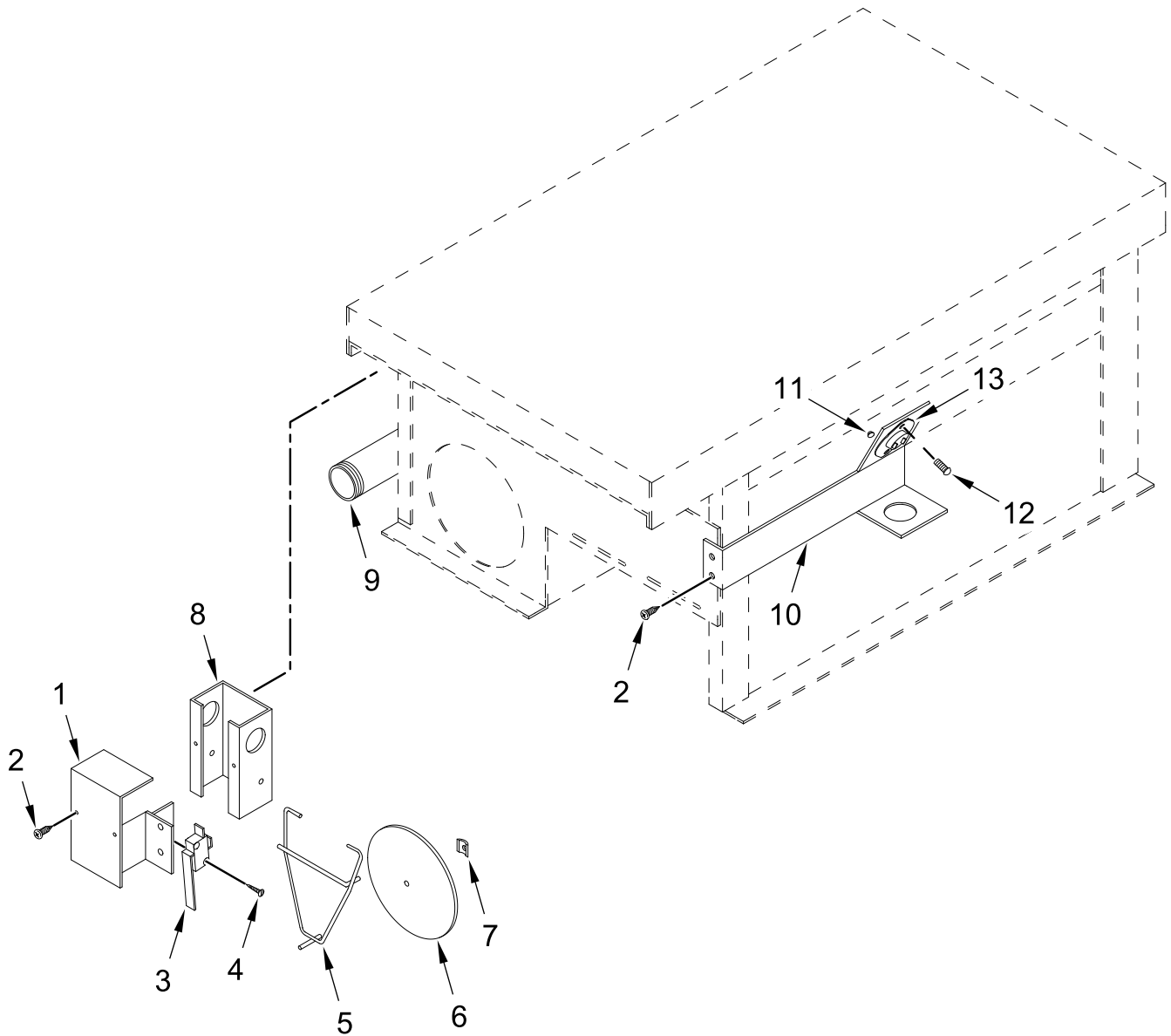
DIRECT SPARK IGNITION BURNER ASSEMBLY



DIRECT SPARK IGNITION BURNER ASSEMBLY

<u>Illus.</u> <u>No.</u>	<u>Part No.</u>	<u>Description</u>	<u>Illus.</u> <u>No.</u>	<u>Part No.</u>	<u>Description</u>	<u>Illus.</u> <u>No.</u>	<u>Part No.</u>	<u>Description</u>
1	WFR817062	Natural Gas Burner Assembly Complete (includes No(s) 1, 2, and 4 through 18)	6	WFR345590	Gas Valve Bracket	15	WFR128937	Direct Spark Ignition Module (3 Tries)
2	WFR850899	Burner Box ONLY	7	WFR150309	Screw 10-16 x 1/2 in (Hex Head TEK Crimptite®)	16	WFR810029	Direct Spark Ignition Module Mounting Bracket
3	WFR141105	Large Burner Tube	8	WFR150108	Screw 8-32 x 1/2 in	17	WFR141317	Union Elbow 1/2 in
	WFR140820	Burner Orifice #29 (Natural Gas) ONLY	9	WFR151001	Nut 8-32	18	WFR142809	Pipe 1/2 x 29 1/8 in
	WFR883325	L.P. Conversion Kit (includes orifices) (Consult factory for elevations +2K Ft)	10	WFR128915	Ignitor Probe ONLY			
4	WFR141232	Manifold 1/2 in. (3-port)	11	WFR829999	High Voltage Wire with 1/4 in. Spade Connection			
5	WFR128979	Gas Valve (Natural Gas)	12	WFR150300	Screw 10-16 x 1/2 in (Hex Washer TEK Crimptite®)			
			13	WFR152013	Nut 6-32			
			14	WFR153017	SAE Washer #6			

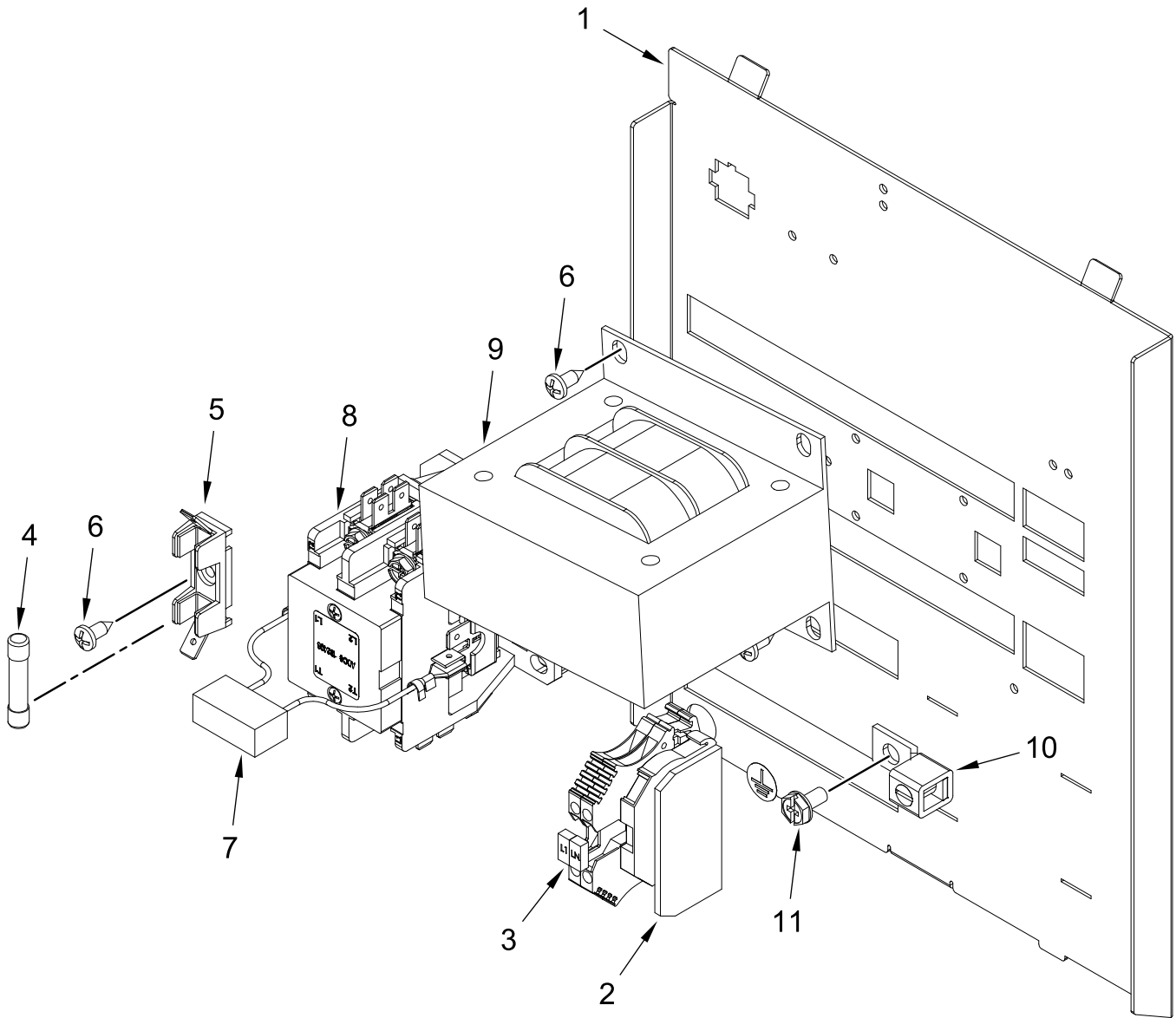
SAIL SWITCH / BURNER SUB ASSEMBLY



SAIL SWITCH / BURNER SUB ASSEMBLY

<u>Illus.</u> <u>No.</u>	<u>Part No.</u>	<u>Description</u>	<u>Illus.</u> <u>No.</u>	<u>Part No.</u>	<u>Description</u>	<u>Illus.</u> <u>No.</u>	<u>Part No.</u>	<u>Description</u>
1	WFR350283	Sail Switch Box Cover and Bracket ONLY	6	WFR319202	Sail Switch Damper	11	WFR151000	Nut 6-32
2	WFR150300	Screw 10-16 x 1/2 in (Hex Washer TEK Crimptite®)	7	WFR154002	Push-On Fastener 1/8 in	12	WFR150001	Screw 6-32 x 1/2 in
3	WFR122200	Service Switch	8	WFR319200	Sail Switch Bracket ONLY	13	WFR130201	Thermostat Hi-Limit Reset Switch 330°
4	WFR150303	Screw #4 x 3/4 in	9	WFR142809	Pipe 1/2 x 29 1/8 in			
5	WFR105500	Sail Switch Rod Assembly	10	WFR319704	Hi-Limit Mounting Bracket			

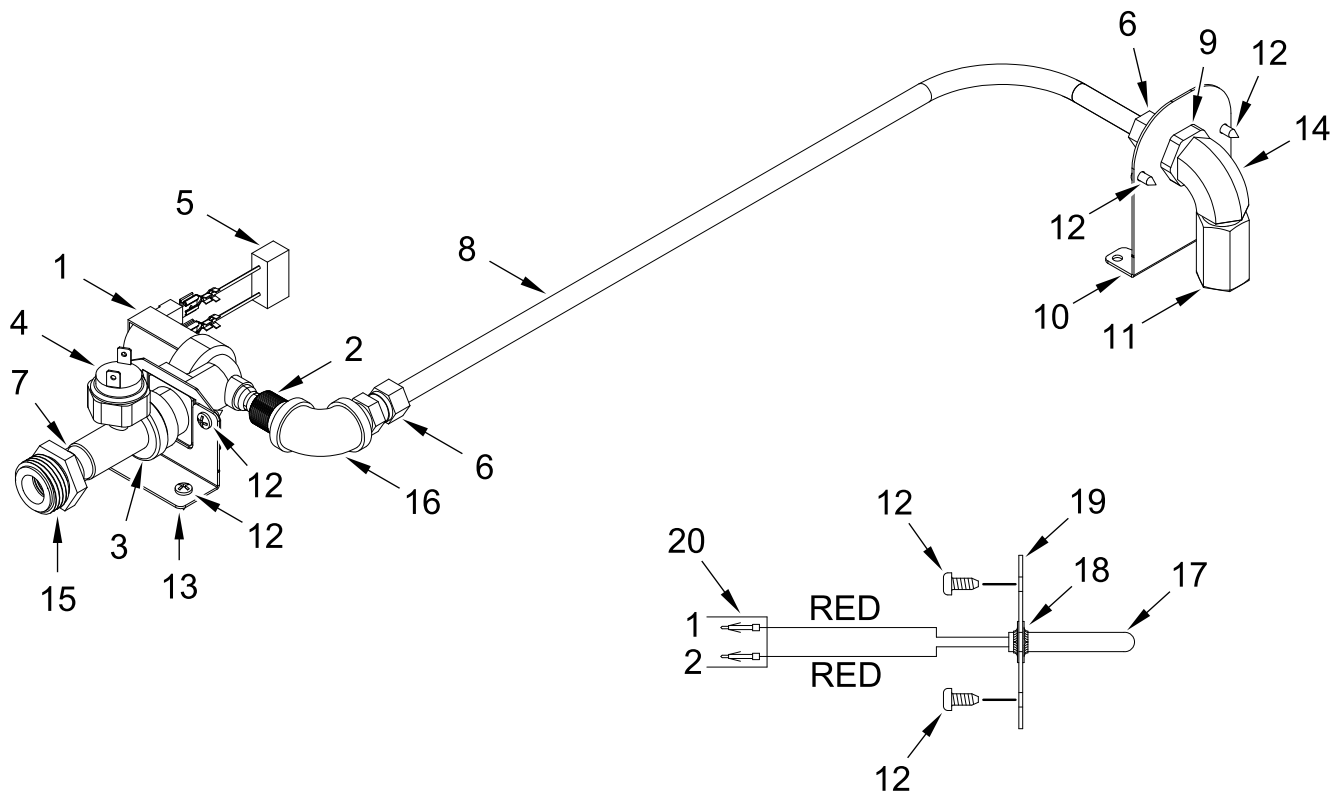
120V (1Ø) REAR ELECTRICAL PANEL ASSEMBLY



120V (1Ø) REAR ELECTRICAL PANEL ASSEMBLY

<u>Illus.</u> <u>No.</u>	<u>Part No.</u>	<u>Description</u>	<u>Illus.</u> <u>No.</u>	<u>Part No.</u>	<u>Description</u>	<u>Illus.</u> <u>No.</u>	<u>Part No.</u>	<u>Description</u>
1	WFR398301	Rear Electric Panel	6	WFR150301	Screw 8-18 x 7/16 in	10	WFR121010	Lug Terminal 14-4 (Ground)
2	WFR120766	Terminal Block Bracket	7	WFR824081	RC Network Assembly	11	WFR120910	Screw 10-32 x 3/8 in
3	WFR120758	Terminal Block	8	WFR132498	DP Contactor 24V 2-Pole			
4	WFR136101	Fuse 800mA (SLO-BLO)	9	WFR132109	Transformer – 24 vac Assembly (for 120V 60 Hz Models Only)			
5	WFR136008	Fuse Block						

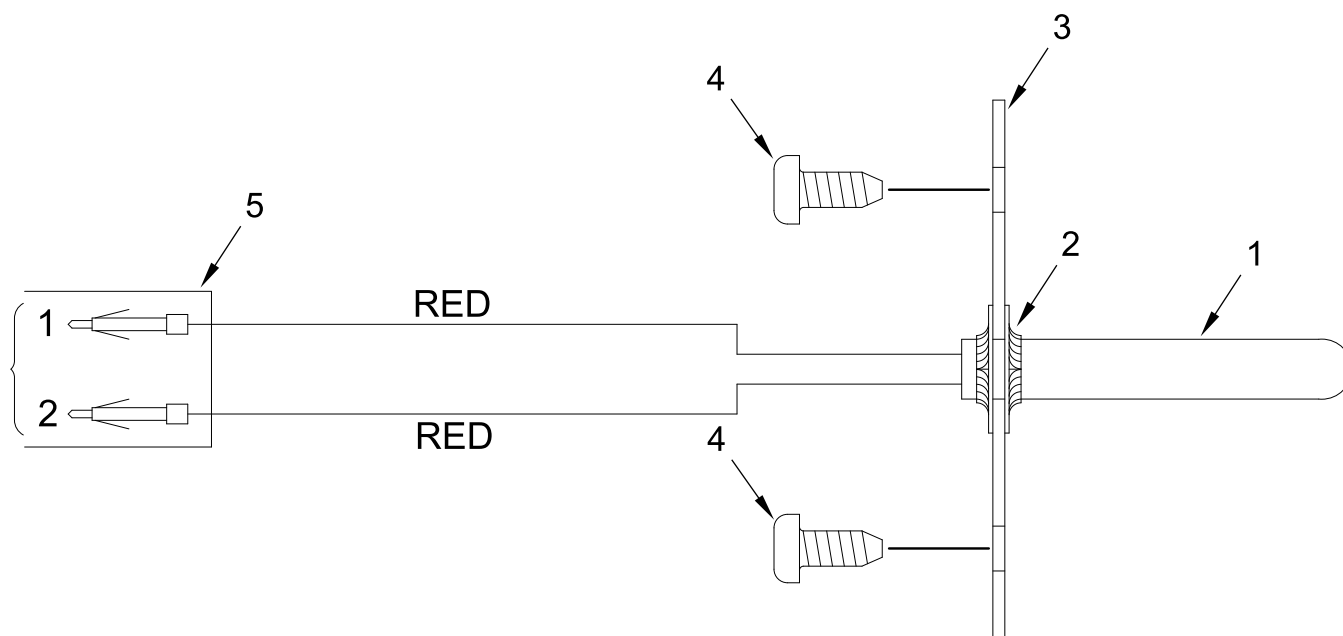
S.A.F.E. SYETEM ASSEMBLY



S.A.F.E. SYSTEM ASSEMBLY

<u>Illus.</u> <u>No.</u>	<u>Part No.</u>	<u>Description</u>	<u>Illus.</u> <u>No.</u>	<u>Part No.</u>	<u>Description</u>	<u>Illus.</u> <u>No.</u>	<u>Part No.</u>	<u>Description</u>
1	WFR165119	S. A. F. E. System H2O Valve 24VAC	11	WFR143581	S. A. F. E. System Spray Nozzle 3 GPM 3/8 in	17	WFR822752	S. A. F. E. System Temperature Probe Assembly
2	WFR143183	Brass Adaptor 7/16-20 x 3/8 in	12	WFR150301	Screw 8-18 x 7/16 in			(includes No(s) 17 through 20 and 12)
3	WFR143182	Brass Tee 3/4 x 1/8 x 3/8 in	13	WFR313962	Main Line Sensor Activated Fire Extinguishing System Valve Bracket 90°	18	WFR154007	Push On Fastener 1/4 in
4	WFR136987	Water Pressure Switch	14	WFR143155	Brass Elbow 3/8 in	19	WFR390390	Sensor Bracket ONLY
5	WFR824081	RC Network Assembly	15	WFR143356	Nylon Adaptor 3/8 x 3/4 in	20	WFR122647	Connector ONLY
6	WFR143208	Brass Connect 3/8 x 3/8 in	16	WFR143310	Brass Elbow 90° 3/8 in			
7	WFR143241	Brass Nipple 3/8 in		WFR817574	S. A. F. E. System Assembly Complete			
8	WFR143099	Tube 3/8 in			(includes No(s) 1 through 16)			
9	WFR143303	Brass Lock Nut 3/8 in						
10	WFR335351	S. A. F. E. System Sprinkler Head Mounting Plate						

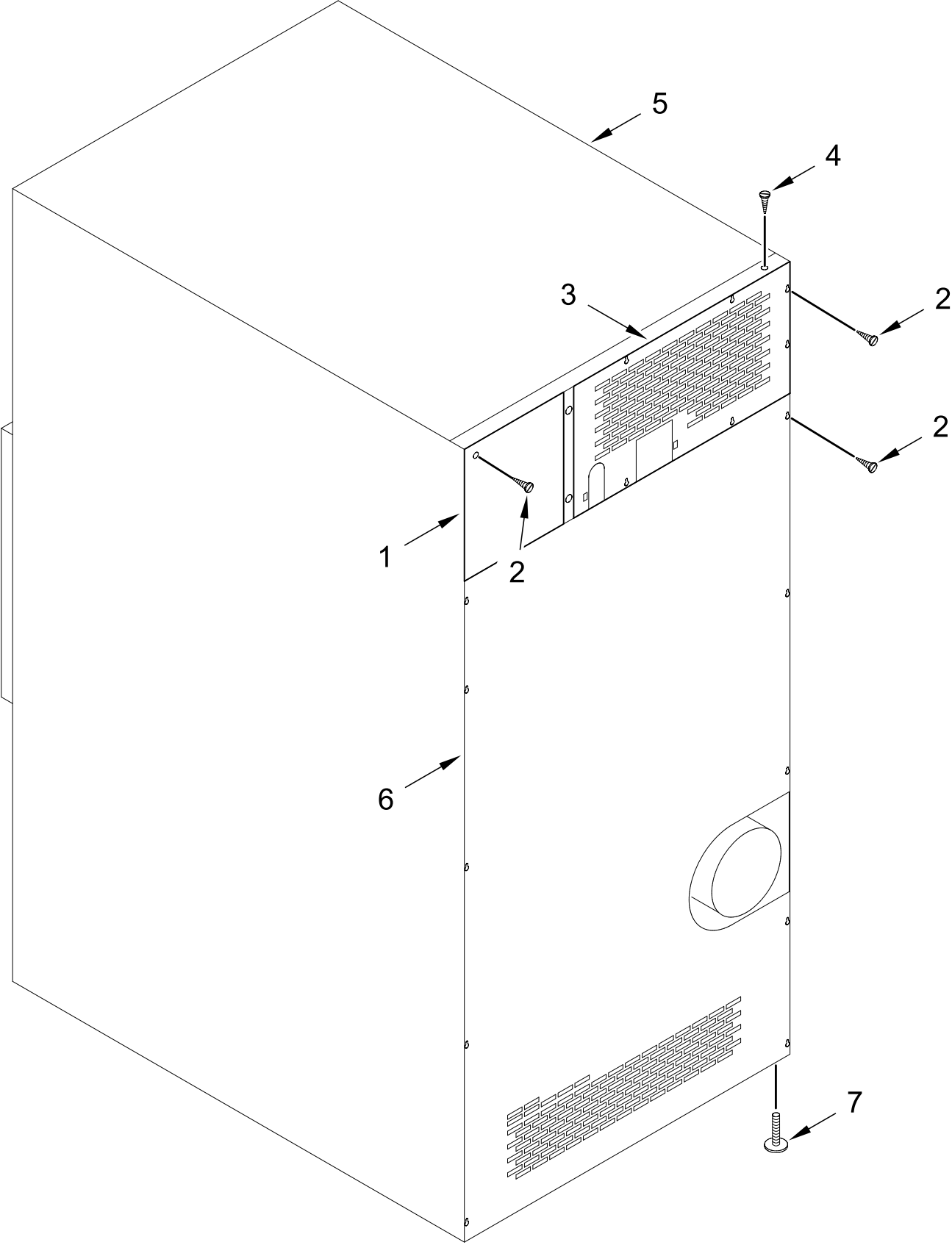
S.A.F.E. TEMPERATURE PROBE ASSEMBLY



S.A.F.E. TEMPERATURE PROBE ASSEMBLY

<u>Illus.</u> <u>No.</u>	<u>Part No.</u>	<u>Description</u>	<u>Illus.</u> <u>No.</u>	<u>Part No.</u>	<u>Description</u>	<u>Illus.</u> <u>No.</u>	<u>Part No.</u>	<u>Description</u>
1	WFR822752	S. A. F. E. System Temperature Probe Assembly (includes No(s) 1 through 5)	2	WFR154007	Push On Fastener 1/4 in	4	WFR150301	Screw 8-18 x 7/16 in
			3	WFR390390	Sensor Bracket ONLY	5	WFR122647	Connector ONLY

OUTER TOP / BACK GUARD ASSEMBLIES



OUTER TOP / BACK GUARD ASSEMBLIES

<u>Illus.</u> <u>No.</u>	<u>Part No.</u>	<u>Description</u>	<u>Illus.</u> <u>No.</u>	<u>Part No.</u>	<u>Description</u>	<u>Illus.</u> <u>No.</u>	<u>Part No.</u>	<u>Description</u>
1	WFR322935	Electrical Box Cover	4	WFR150300	Screw 10-16 x 1/2 in (Hex Washer TEK Crimpitite®)	6	WFR322082	Bottom Back Guard
2	WFR150301	Screw 8-18 x 7/16 in				7	WFR103500	Adjustable Leveling Leg
3	WFR314424	Top Back Guard	5	WFR312533	Outer Top			