

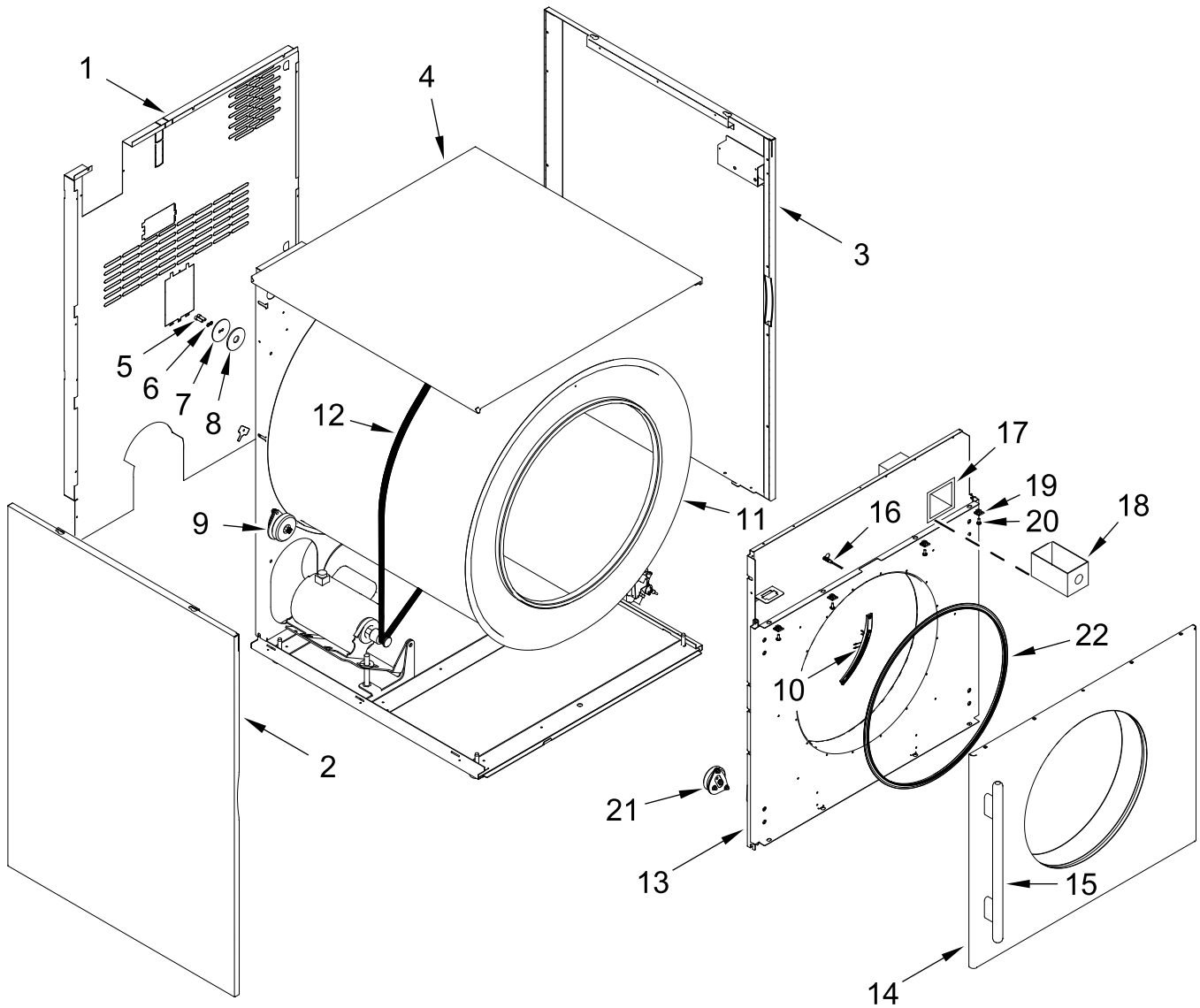


COMMERCIAL GAS DRYER MULTI-LOAD OPL / COIN SERVICE PARTS LIST

MODELS:

MDG52PNBWW. (Painted) (as of January 2017)
MDG52PDBWW. (Painted) (as of January 2017)
MDG52PDBWS. (Stainless) (as of January 2017)

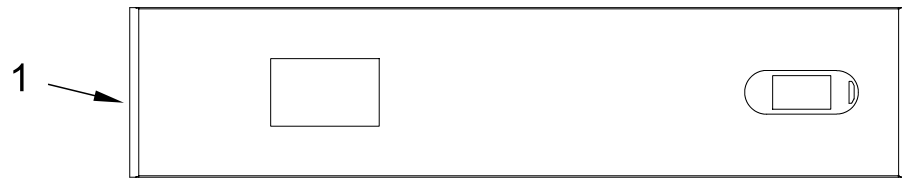
COMPLETE DRYER ASSEMBLY



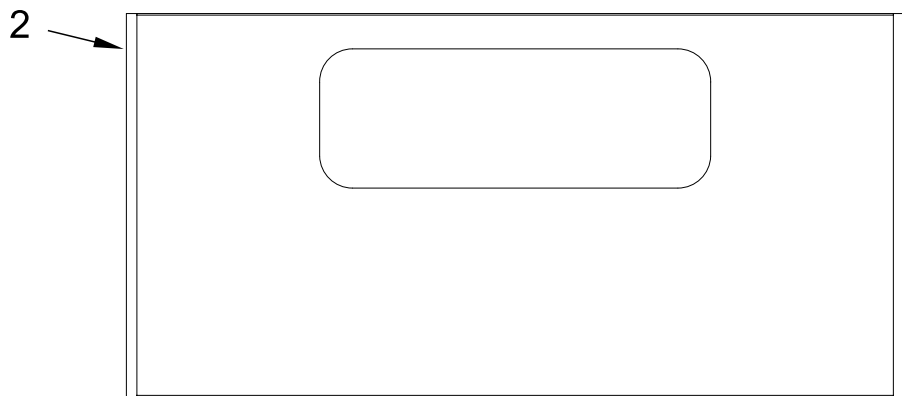
COMPLETE DRYER ASSEMBLY

<u>Illus.</u> <u>No.</u>	<u>Part No.</u>	<u>Description</u>	<u>Illus.</u> <u>No.</u>	<u>Part No.</u>	<u>Description</u>	<u>Illus.</u> <u>No.</u>	<u>Part No.</u>	<u>Description</u>
1	WFR320674	Back Panel	11	WFR851374	Galvanized Tumbler Assembly	16	WFR818370	Rotation Sensor Only
	WFR333831	Bottom Back Panel		WFR115911	Front Tumbler Felt	17	WFR851384	Coin Vault
2	WFR815081	Left Side Panel Assembly		WFR115909	Rear Tumbler Felt		WFR819286	Coin Vault Jumper Harness
3	WFR815082	Right Side Panel Assembly	12	WFR102415	Drive Belt	18	WFR125916	Coin Box
4	WFR815077	Top Panel Assembly	13	WFR887256	Non-Coin Front Support Panel with Auto Sensor (Black)	19	WFR154059	U-Nut
5	WFR153064	Screw 1/4-20 x 1/2 in		WFR887257	Coin Front Support Panel (Black)	20	WFR154364	Screw 10-16 x 1/2 in (Stainless Steel)
7	WFR185426	Backup Washer (2 Hole Screws)				21	WFR851529	Front Wheel Bracket Assembly
8	WFR153048	Friction Pad	14	WFR851351	Main Door Assembly with Handle (Painted)	22	WFR102397	Door Gasket
	WFR354217	Spacer Plate		WFR851532	Main Door Assembly with Handle (Stainless Steel)			
	WFR185240	Tumbler Shaft		WFR103067	Door Hinge			
9	WFR851530	Rear Wheel Bracket Assembly	15	WFR185183	Door Handle			
10	WFR851575	Moisture Sensor Assembly		WFR185182	Standoff (Door Handle)			

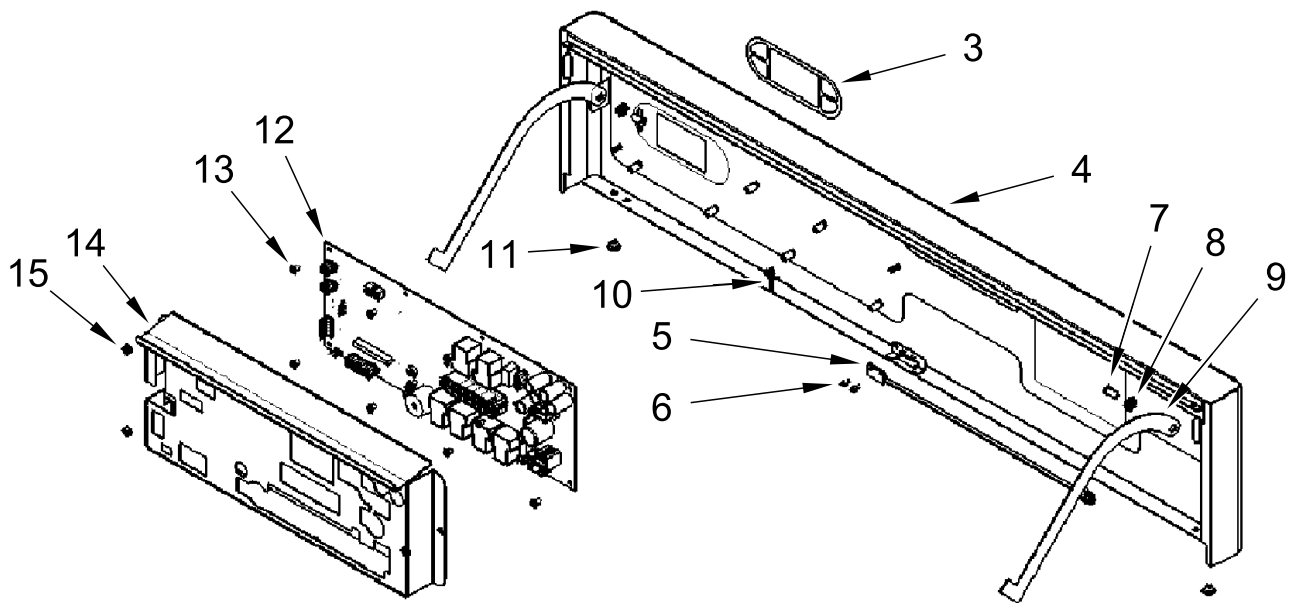
OPL MCU CONTROL PANEL ASSEMBLY



TOP PANEL



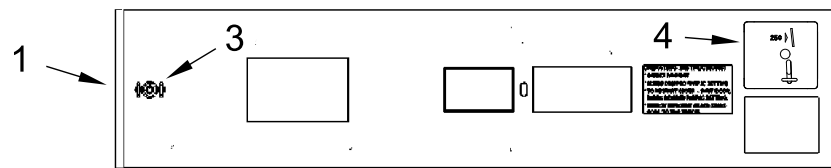
LOWER PANEL



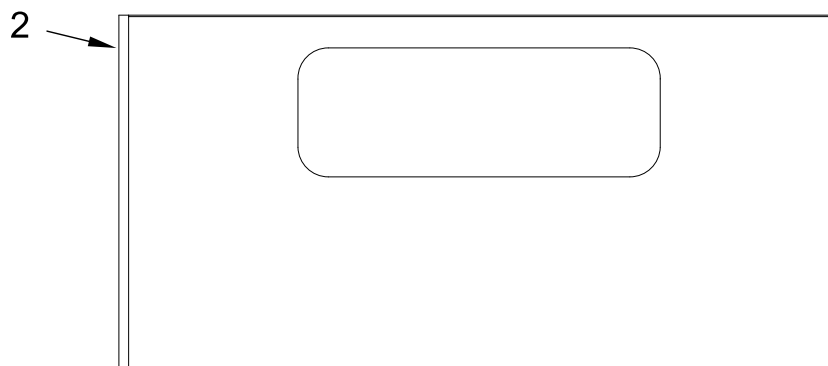
OPL MCU CONTROL PANEL ASSEMBLY

<u>Illus.</u> <u>No.</u>	<u>Part No.</u>	<u>Description</u>	<u>Illus.</u> <u>No.</u>	<u>Part No.</u>	<u>Description</u>	<u>Illus.</u> <u>No.</u>	<u>Part No.</u>	<u>Description</u>
1	WFR828424	Non-Coin Control Panel Assembly Complete	9	WFR333777	Relief Panel Bracket	14	WFR328662	Control Board Cover
2	WFR814515	Toe Panel	10	WFR121494	Push Mount Wire Tie	15	WFR153073	Nut 8-32
3	WFR112586	Non-Coin Keypad	11	WFR102367	Bumper			
4	WFR828376	Non-Coin Control Panel	12	WFR887093	Non-Coin Microprocessor with S. A. F. E. System			
5	WFR819196	Door Switch Assembly		WFR136116	Fuse 3 Amp (Fast Acting)			
6	WFR150329	Screw 4 x 3/8 in		WFR136056	Fuse 15 Amp (SLO-BLO)			
7	WFR154220	Rivet 3/16 in						
8	WFR183008	Keyhole Plug	13	WFR152022	Screw 6-32 x 5/16 in			

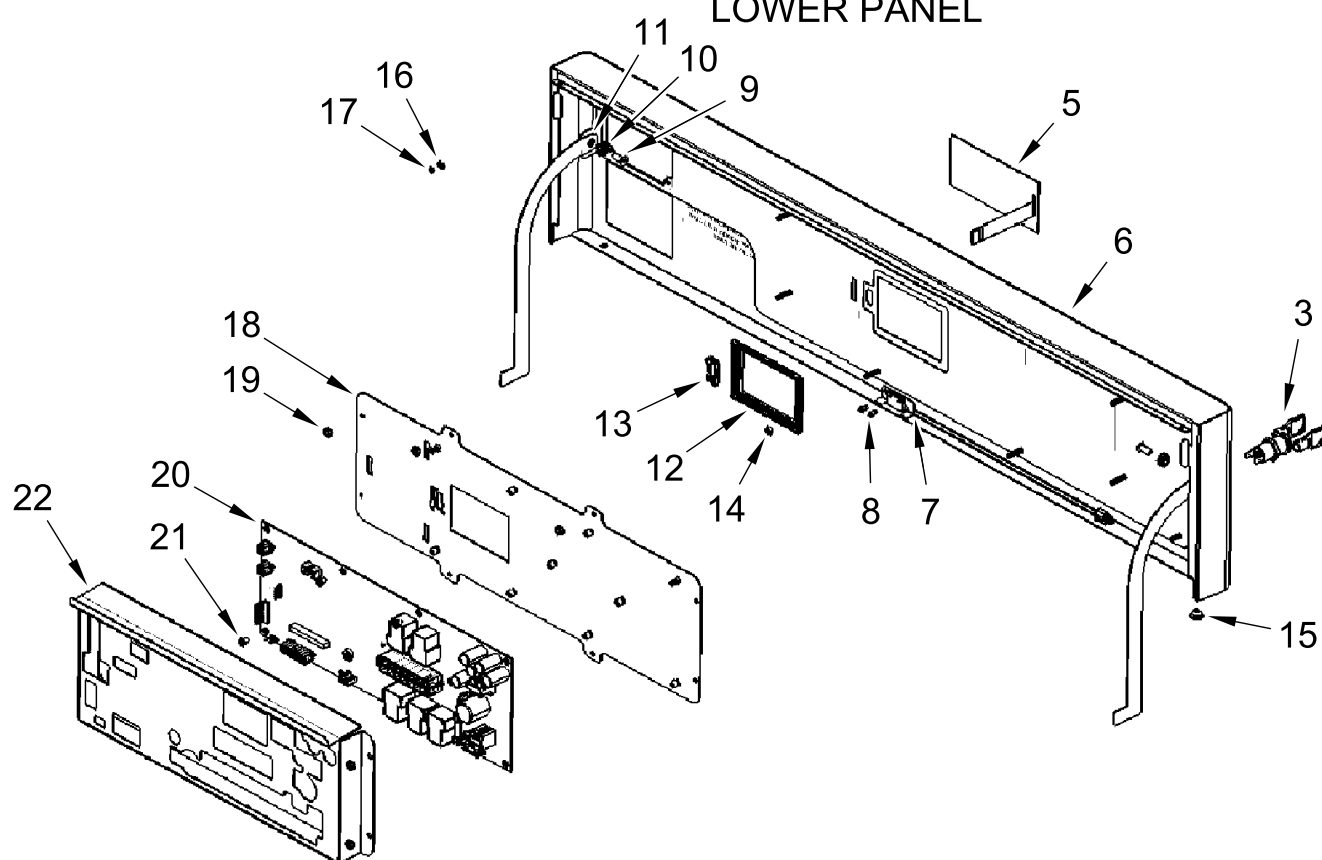
COIN MCU CONTROL PANEL ASSEMBLY



TOP PANEL



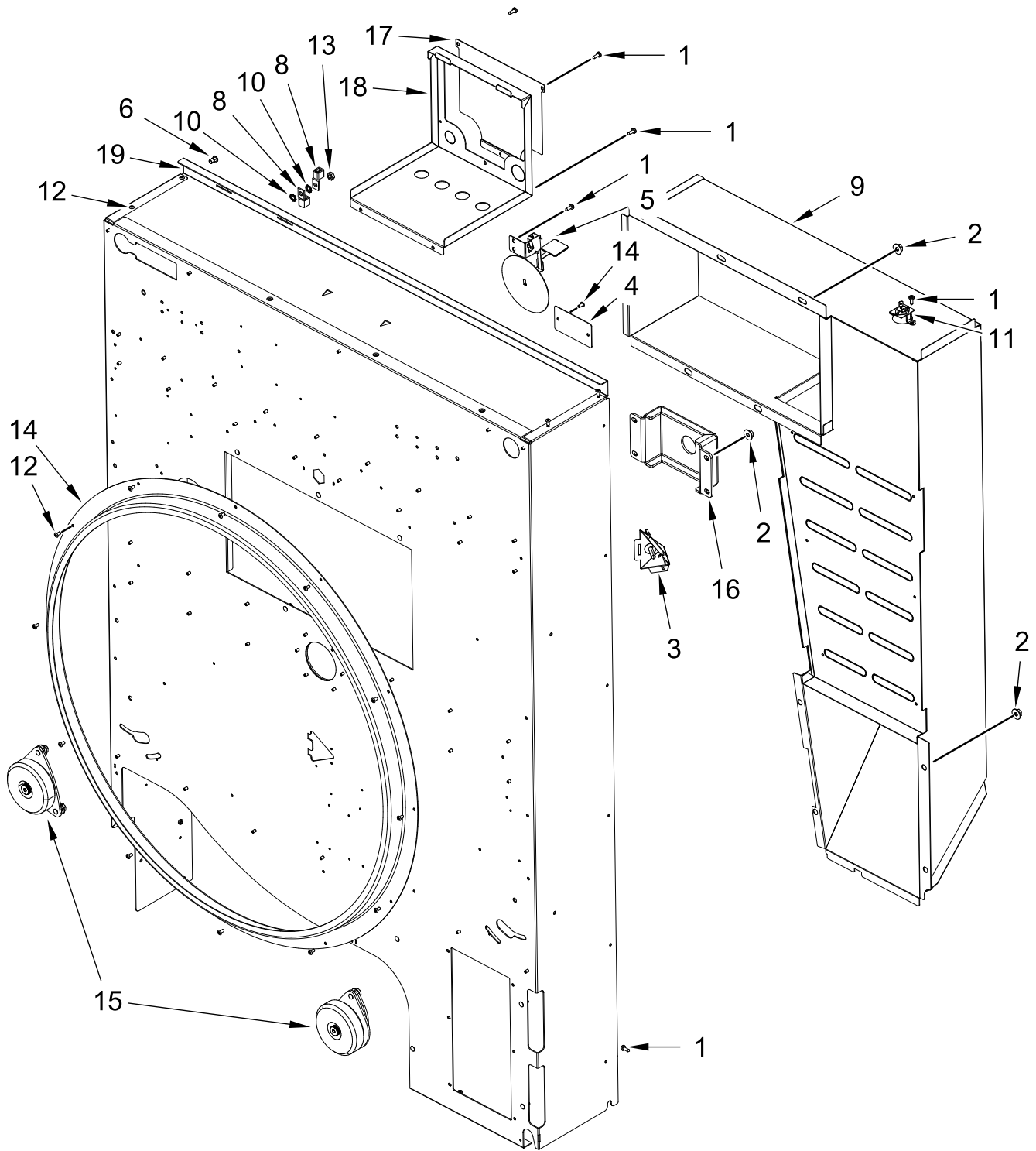
LOWER PANEL



COIN MCU CONTROL PANEL ASSEMBLY

<u>Illus.</u> <u>No.</u>	<u>Part No.</u>	<u>Description</u>	<u>Illus.</u> <u>No.</u>	<u>Part No.</u>	<u>Description</u>	<u>Illus.</u> <u>No.</u>	<u>Part No.</u>	<u>Description</u>
1	WFR828423	Coin Control Panel Assembly Complete	7	WFR819196	Door Switch Assembly	16	WFR153010	Lock Washer #6
2	WFR814515	Toe Panel	8	WFR150329	Screw 4 x 3/8 in	17	WFR152102	Nut M3
3	WFR160070	Control Door Lock Assembly	9	WFR154220	Rivet 3/16 in	18	WFR819421	Control Board Mount Assembly
	WFR160169	Key (ZB7)	10	WFR183008	Keyhole Plug	19	WFR153073	Nut 8-32
4	WFR818213	Coin Acceptor Assembly	11	WFR333777	Relief Panel Bracket	20	WFR884479	Coin Microprocessor
5	WFR112605	Coin Keypad	12	WFR112549	LCD Display Cover	21	WFR152022	Screw 6-32 x 5/16 in
6	WFR828379	Coin Control Panel	13	WFR135008	IR Cover	22	WFR328652	Control Board Cover
			14	WFR154400	Spacer 1/8 in			
			15	WFR102367	Bumper			

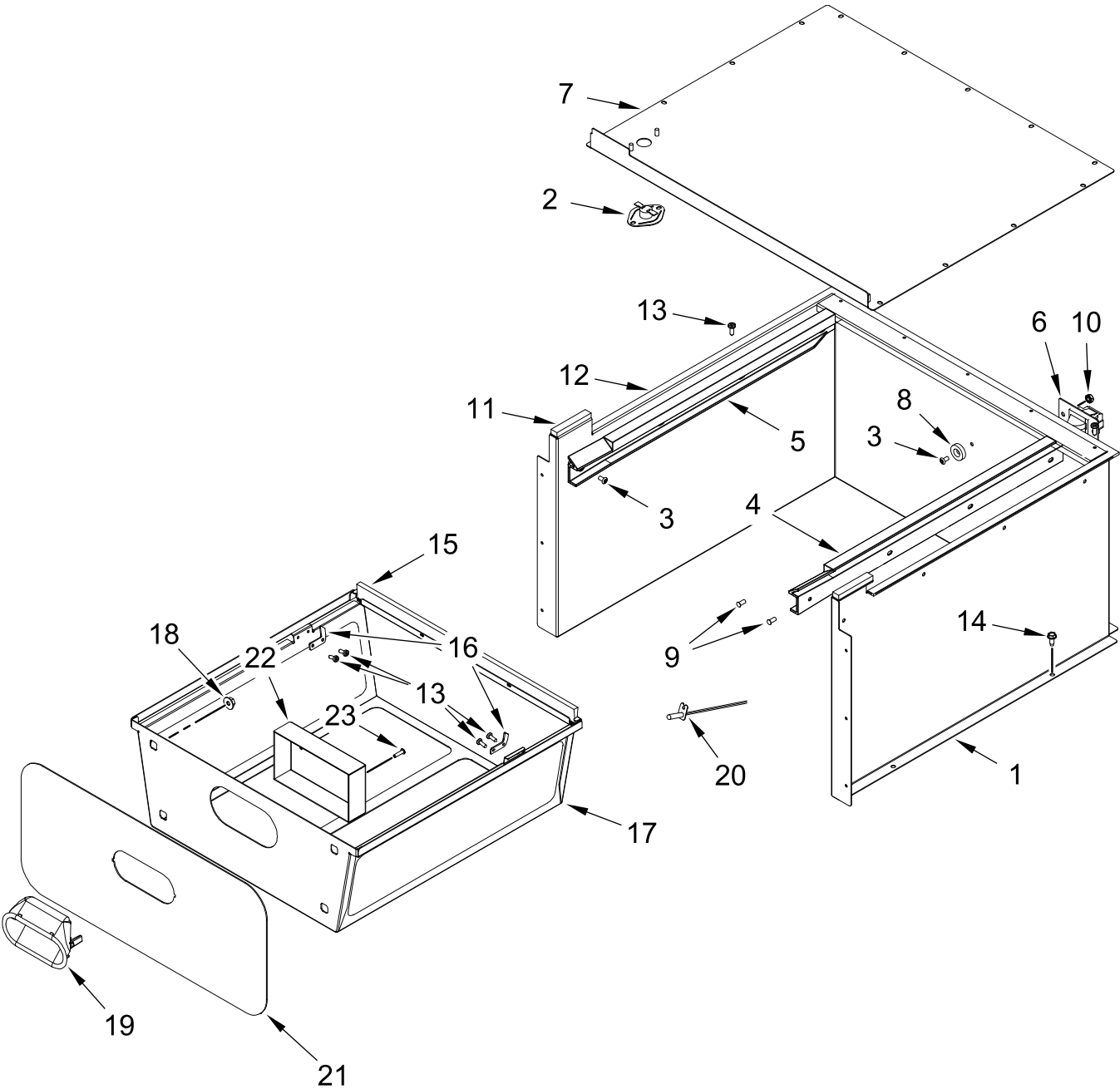
TUMBLER / SUPPORT ASSEMBLIES



TUMBLER / SUPPORT ASSEMBLIES

<u>Illus.</u> <u>No.</u>	<u>Part No.</u>	<u>Description</u>	<u>Illus.</u> <u>No.</u>	<u>Part No.</u>	<u>Description</u>	<u>Illus.</u> <u>No.</u>	<u>Part No.</u>	<u>Description</u>
1	WFR150331	Screw 8-18 x 1/2 in	8	WFR121010	Lug Terminal 14-4 (Ground)	17	WFR350238	Electric Box Cover Plate
2	WFR152014	Serrated Hex Flange Nut 1/4-20	9	WFR851262	Heat Duct	18	WFR319653	Rear Electric Box
3	WFR828457	Axial Probe Assembly	10	WFR153021	Washer Serrated 1/4 in	19	WFR315343	Rear Tumbler Support Top Flange
4	WFR318691	Cover Plate (without S.A.F.E. System)	11	WFR183112	Thermostat High Limit			
5	WFR828238	Sail Switch Assembly	12	WFR154200	Rivet 5/32 in			
6	WFR152111	Rivet Nut 10-32	13	WFR152002	Nut 1/4-20			
7	WFR828456	Rear Tumbler Support Panel Complete	14	WFR185156	Rear Bulkhead with Mounting Holes			
		(Includes No(s) 1 through 19)	15	WFR851530	Rear Wheel Bracket Assembly			
	WFR828303	Rear Tumbler Support Panel ONLY	16	WFR350228	Thrust Bearing Box			

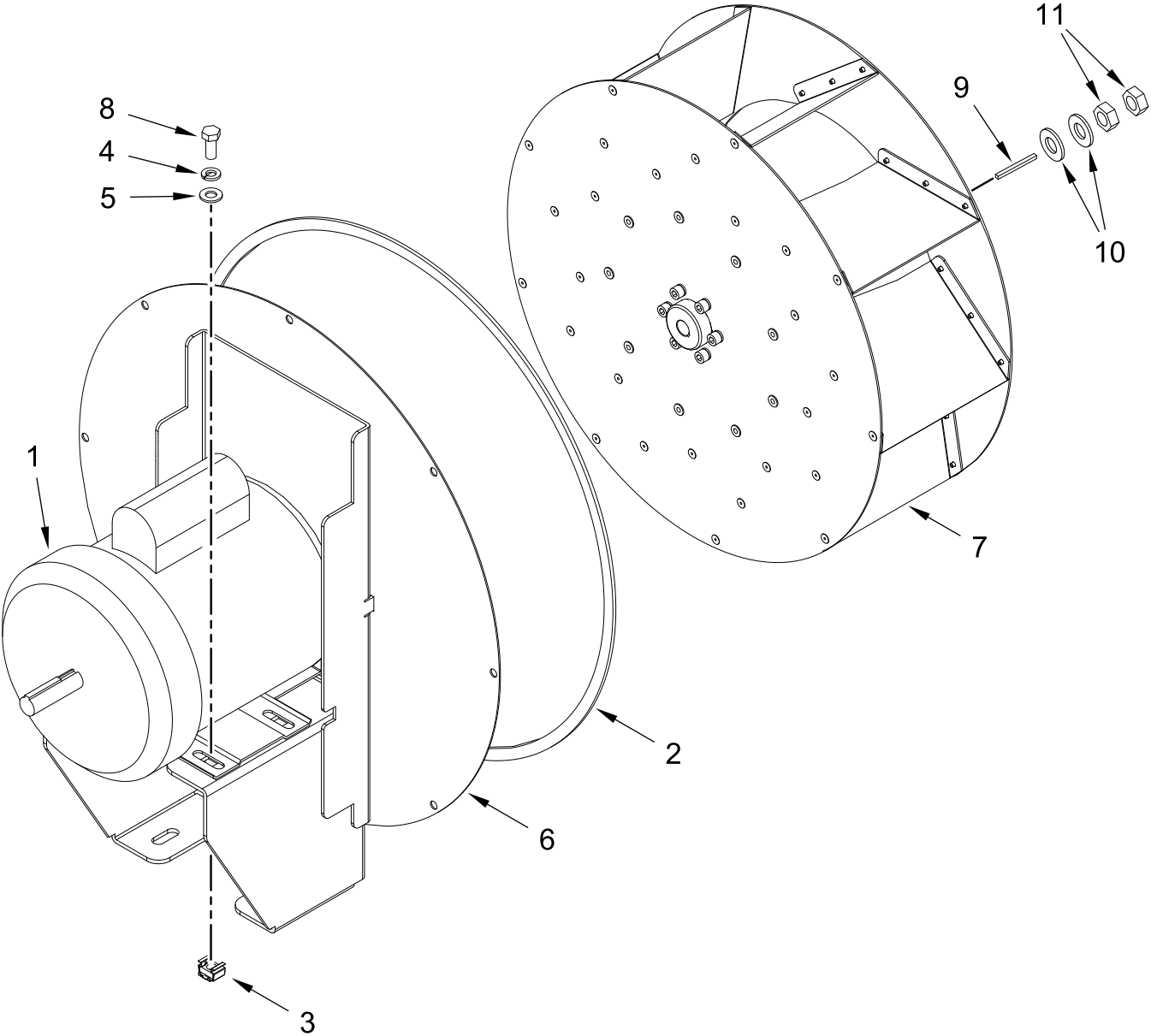
LINT BOX AND LINT DRAWER ASSEMBLY



LINT BOX AND LINT DRAWER ASSEMBLY

<u>Illus.</u> <u>No.</u>	<u>Part No.</u>	<u>Description</u>	<u>Illus.</u> <u>No.</u>	<u>Part No.</u>	<u>Description</u>	<u>Illus.</u> <u>No.</u>	<u>Part No.</u>	<u>Description</u>
1	WFR814513	Large Lint Box Assembly Complete	10	WFR153073	Nut 8-32	19	WFR185148	Lint Drawer Handle (Painted)
	WFR333696	Large Lint Box ONLY	11	WFR117607	Foam Tape (When Ordering Specify Length)	20	WFR836028	Exhaust Temperature Probe
2	WFR130119	190° Automatic High Limit	12	WFR117604	Foam Tape (When Ordering Specify Length, sold by the inch)	21	WFR828429	Lint Handle Black with Graphics
3	WFR154200	Rivet 5/32 in	13	WFR150331	Screw 8-18 x 1/2 in	22	WFR333693	Handle Cup
4	WFR185215	Right Lint Rail	14	WFR150300	Screw 10-16 x 1/2 in (Hex Washer TEK Crimptite®)	23	WFR150334	Screw 8-16 x 5/8 in
5	WFR185216	Left Lint Rail	15	WFR170171	Lint Drawer Brush			
6	WFR819523	Lint Drawer Switch Assembly	16	WFR185423	Lint Drawer Stop			
	WFR122002	Lint Drawer Switch Only	17	WFR828430	Lint Drawer Assembly Complete (Painted)			
7	WFR814514	Lint Box Top Assembly	18	WFR152014	Serrated Hex Flange Nut 1/4-20			
8	WFR102004	Round Door Magnet 3/4 in						
9	WFR153564	Nut 1/4-20						

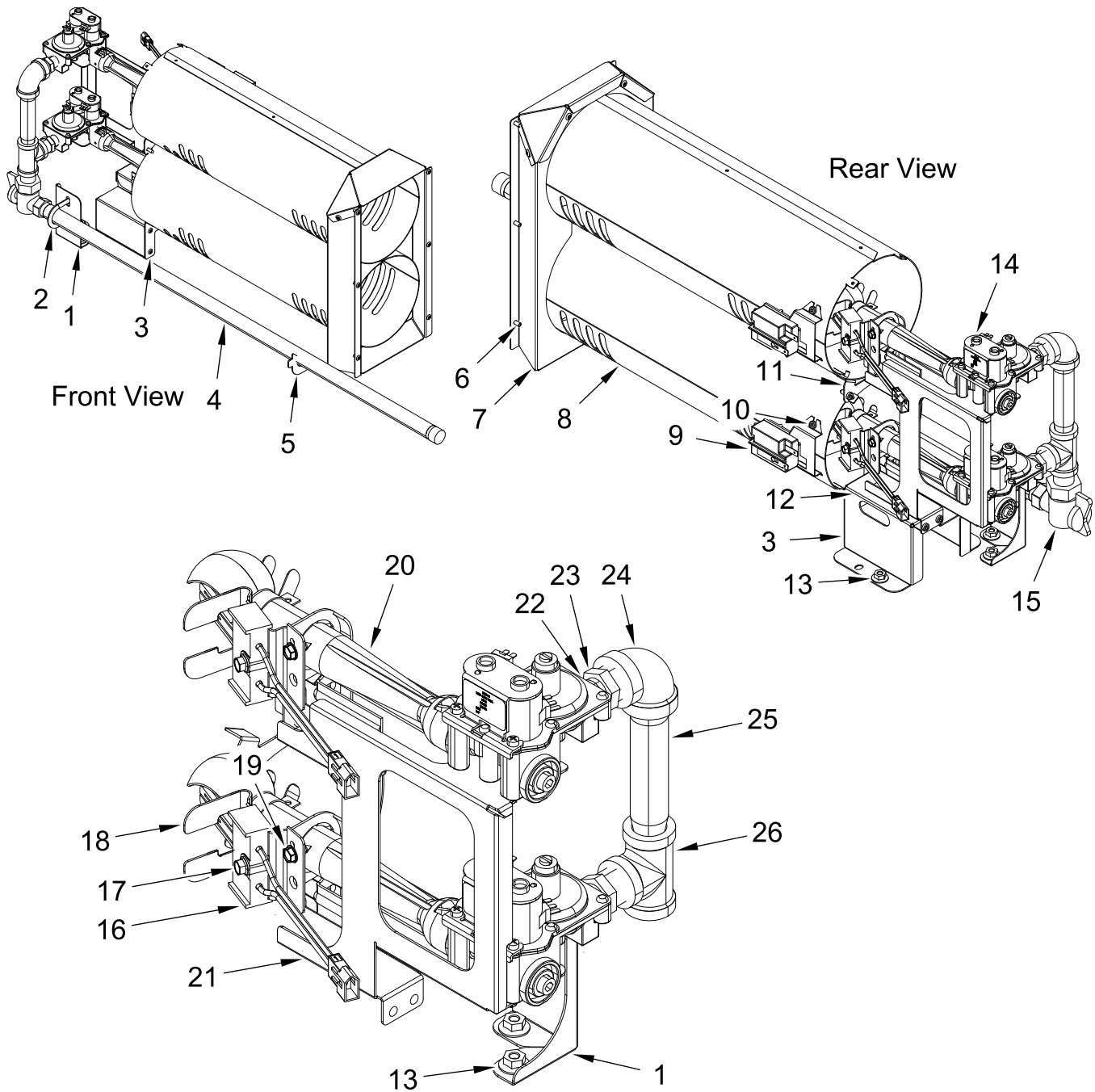
ENCLOSED, MOTOR MOUNT ASSEMBLY



ENCLOSED, MOTOR MOUNT ASSEMBLY

<u>Illus.</u> <u>No.</u>	<u>Part No.</u>	<u>Description</u>	<u>Illus.</u> <u>No.</u>	<u>Part No.</u>	<u>Description</u>	<u>Illus.</u> <u>No.</u>	<u>Part No.</u>	<u>Description</u>
1	WFR815248	Blower Motor Assembly Complete (60 Hz)	3	WFR154000	Tinnerman® Nut 5/16-18	8	WFR150501	Tap Bolt 5/16-18 x 3/4 in
	WFR181061	Motor with Plug 3/4 hp 115-230v 1ø 60 Hz	4	WFR153002	Split Lock Washer 5/16 in	9	WFR100702	Key 1/8 x 1/8 x 1-1/2 in
2	WFR117604	Foam Tape (When Ordering Specify Length, sold by the inch)	5	WFR153001	Washer 5/16 in	10	WFR153050	Washer 1/2 x 1 1/6 in
			6	WFR815249	Motor Mount	11	WFR152017	Nut 1/2-20
			7	WFR815236	Impellor 15.3 in. with 1/2 in. Bore			

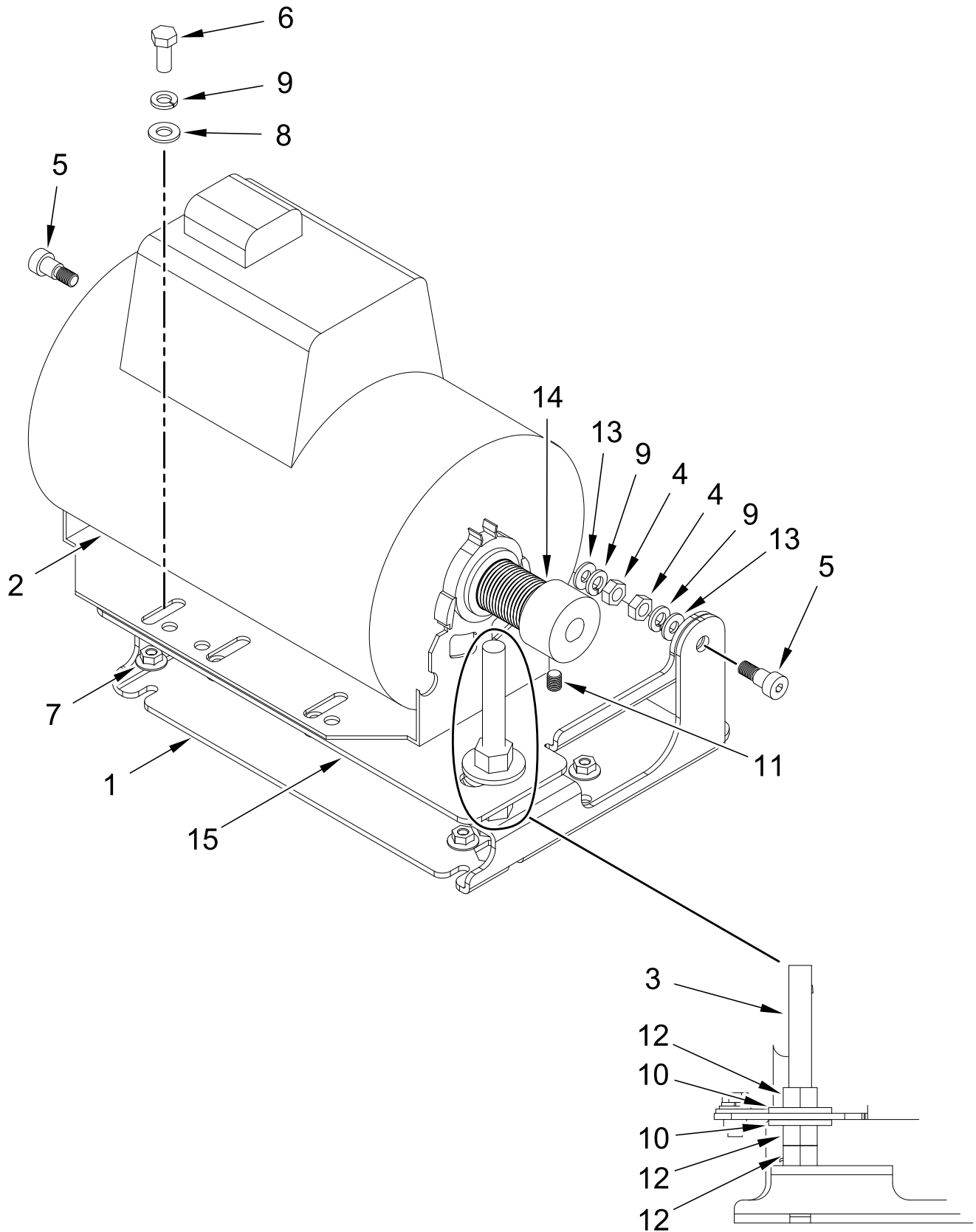
BURNER ASSEMBLY



BURNER ASSEMBLY

<u>Illus.</u> <u>No.</u>	<u>Part No.</u>	<u>Description</u>	<u>Illus.</u> <u>No.</u>	<u>Part No.</u>	<u>Description</u>	<u>Illus.</u> <u>No.</u>	<u>Part No.</u>	<u>Description</u>
1	WFR350253	Front Gas Pipe Bracket	12	WFR350218	Burner Funnel Support Bracket Bottom	20	WFR183144	Tube, Burner
2	WFR154355	U-Bolt with Nuts	13	WFR152014	Serrated Hex Flange Nut 1/4-20	21	WFR350220	Bracket, Dual Gas Valve
3	WFR350221	Dual Gas Burner Support Bracket	14	WFR128944	Gas Valve 120 VAC 60 Hz	22	WFR142953	Reducer 1/2 x 3/8 in
4	WFR143351	Black Iron Pipe 1/2 x 31-3/4 in		WFR140880	Burner Orifice #22 (Natural Gas)	23	WFR183137	Close Nipple 3/8 in
5	WFR350226	Rear Gas Pipe Bracket		WFR140905	Burner Orifice #44 (Liquid Propane Gas)	24	WFR142500	Elbow 1/2 in x 90°
6	WFR154200	Rivet 5/32 in		WFR887296	Liquid Propane Conversion Kit	25	WFR142703	Pipe Nipple 1/2 x 4 in
7	WFR851387	Burner Tube Transition Assembly	15	WFR141320	Union-Shutoff Valve 1/2M x 1/2F in	26	WFR142820	Gas Pipe tee 1/2 x 1/2 x 1/2 in
8	WFR815116	Burner Assembly Complete	16	WFR128910	Ignitor			
	WFR350219	Tube, Burner	17	WFR183145	Screw 8-32 x 7/8 in			
9	WFR130500	Radiant Control	18	WFR185063	Bracket, Ignitor			
10	WFR150331	Screw 8-18 x 1/2 in	19	WFR152208	Screw 10-16 x 1/2 in			
11	WFR350217	Burner Funnel Support Bracket Top						

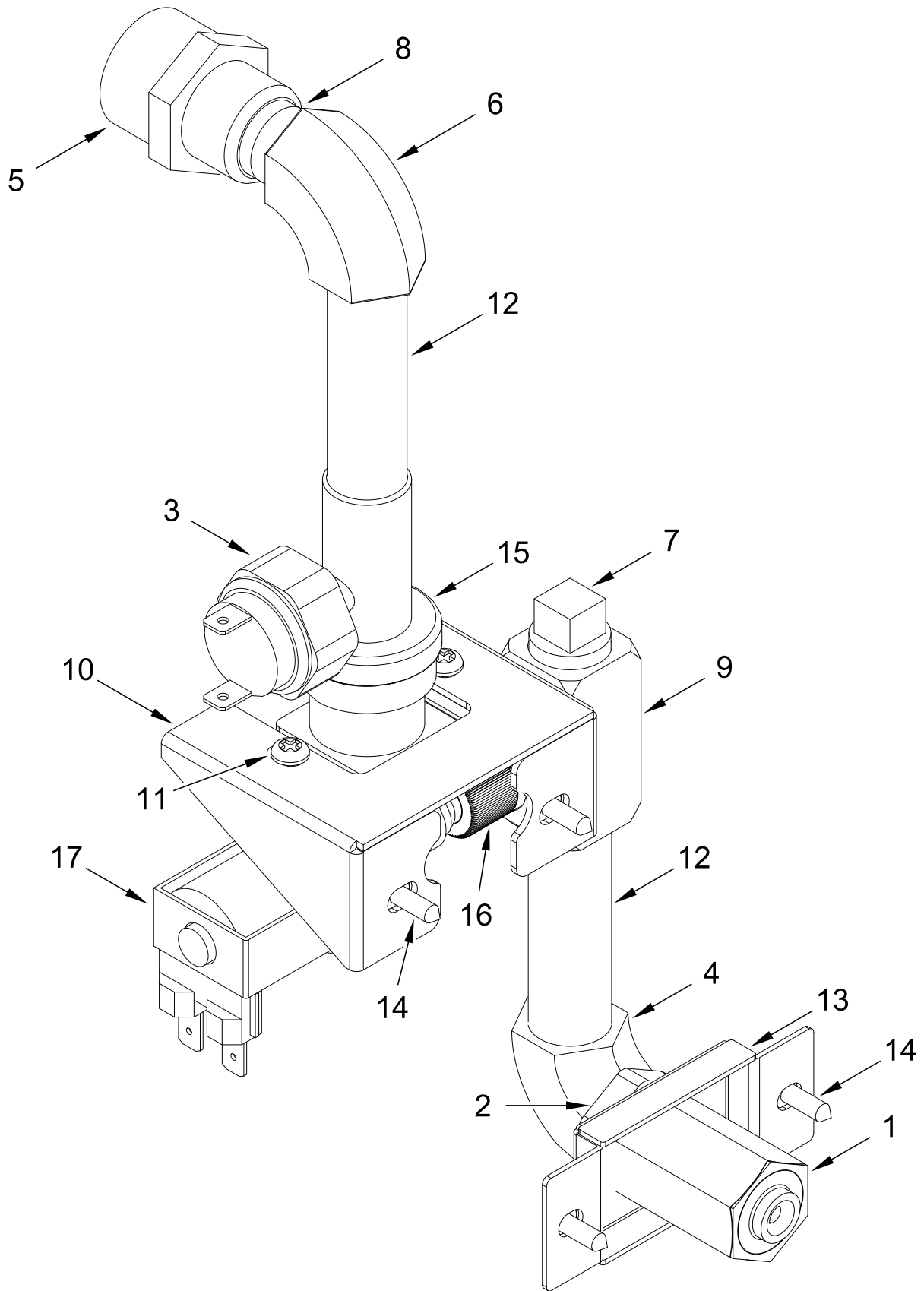
MOTOR ASSEMBLY



MOTOR ASSEMBLY

<u>Illus.</u> <u>No.</u>	<u>Part No.</u>	<u>Description</u>	<u>Illus.</u> <u>No.</u>	<u>Part No.</u>	<u>Description</u>	<u>Illus.</u> <u>No.</u>	<u>Part No.</u>	<u>Description</u>
1	WFR350301	Motor Mount Base Plate	6	WFR150501	Tap Bolt 5/16-18 x 3/4 in	11	WFR154321	Set Screw 5/16-24 x 3/8 in (Black)
2	WFR851570	Drive Motor Assembly Complete (60 Hz)	7	WFR152014	Serrated Hex Flange Nut 1/4-20	12	WFR152011	Nut 1/2-13
	WFR884665	Drive Motor with Sheave (60 Hz)	8	WFR153001	Washer 5/16 in	13	WFR153018	Flat Washer 1/4 in
3	WFR150609	Bolt 1/2-13 x 4-1/2 in	9	WFR153002	Split Lock Washer 5/16 in	14	WFR185420	Motor Sheave (60 Hz)
4	WFR152004	Nut 5/16-18	10	WFR153033	Flat Washer 1/2 x 1-3/8 in	15	WFR851543	Motor Platform Assembly
5	WFR154266	Shoulder Bolt 5/16-18 x 3/8 in						

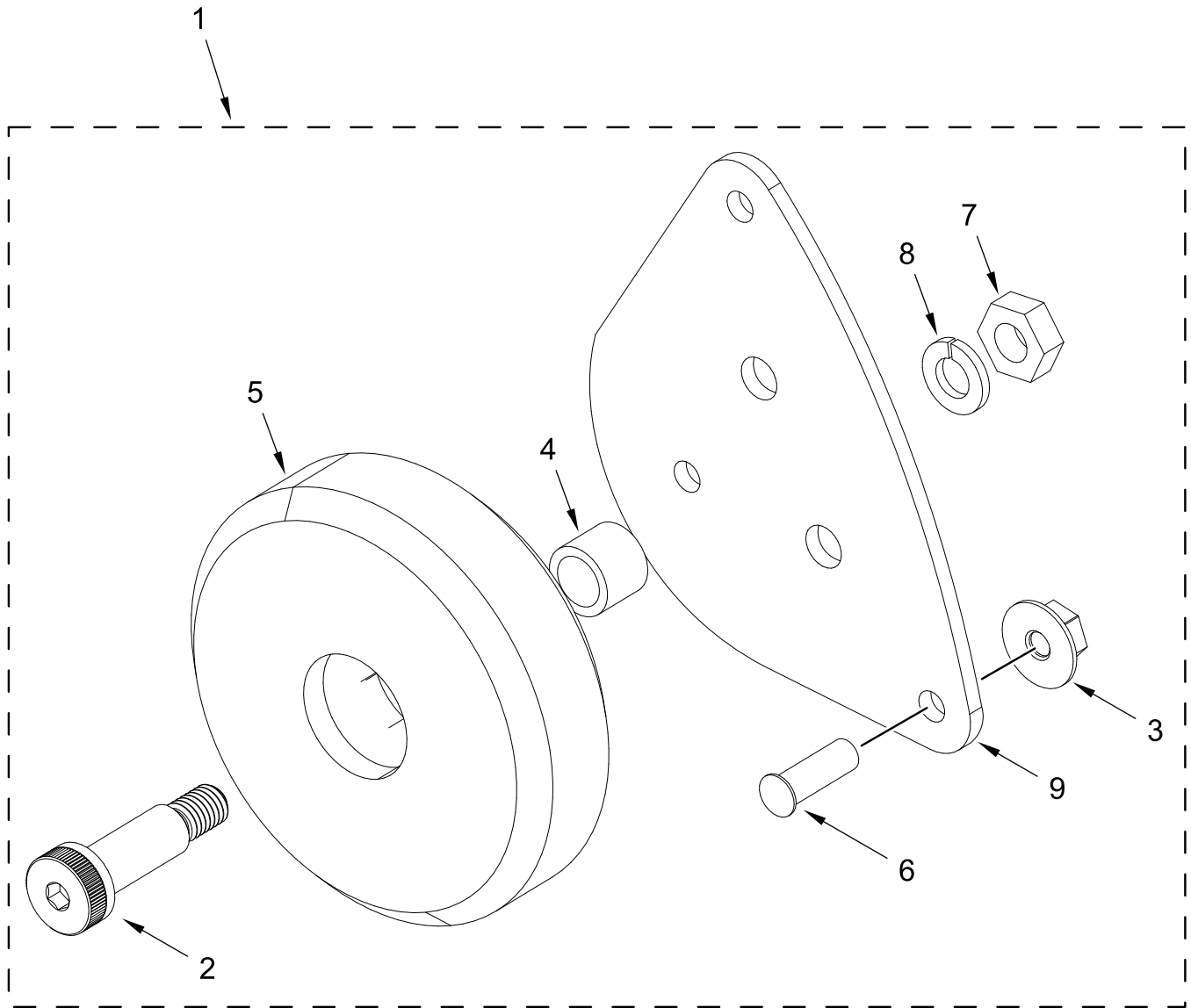
S.A.F.E. SYSTEM ASSEMBLY



S.A.F.E. SYSTEM ASSEMBLY

<u>Illus.</u> <u>No.</u>	<u>Part No.</u>	<u>Description</u>	<u>Illus.</u> <u>No.</u>	<u>Part No.</u>	<u>Description</u>	<u>Illus.</u> <u>No.</u>	<u>Part No.</u>	<u>Description</u>
1	WFR143581	S. A. F. E. System Spray Nozzle 3 GPM 3/8 in	7	WFR143251	Plug 3/8 in	14	WFR150331	Screw 8-18 x 1/2 in
2	WFR143303	Brass Lock Nut 3/8 in	8	WFR143241	Brass Nipple 3/8 in	15	WFR143182	Brass Tee 3/4 x 1/8 x 3/8 in
3	WFR136987	Water Pressure Switch	9	WFR143220	F.P.T. Brass Tee 3/8 in	16	WFR143183	Brass Adaptor 7/16-20 x 3/8 in
4	WFR143155	Brass Elbow 3/8 in	10	WFR319231	S.A.F.E. Valve Bracket	17	WFR165120	Water Valve
5	WFR143356	Nylon Adaptor 3/8 x 3/4 in	11	WFR154338	Screw M4 x 6 mm			
6	WFR143310	Brass Elbow 90° 3/8 in	12	WFR143242	Brass Nipple 3/8 x 2-1/2 in			
			13	WFR318422	S. A. F. E. System Bracket			

WHEEL ASSEMBLY



WHEEL ASSEMBLY

<u>Illus.</u> <u>No.</u>	<u>Part No.</u>	<u>Description</u>	<u>Illus.</u> <u>No.</u>	<u>Part No.</u>	<u>Description</u>	<u>Illus.</u> <u>No.</u>	<u>Part No.</u>	<u>Description</u>
1	WFR851529	Front Wheel Bracket Assembly	2	WFR154264	Screw M8 x 25mm	6	WFR153557	Self-Clinching Stud 1/4-20 x 3/4 in
	WFR851530	Rear Wheel Bracket Assembly	3	WFR152014	Serrated Hex Flange Nut 1/4-20	7	WFR154013	Nut M8
	WFR350198	Rear Wheel Bracket Shim	4	WFR154284	Tumbler Wheel Spacer	8	WFR153002	Split Lock Washer 5/16 in
			5	WFR180060	Tumbler Support Wheel 3-1/2 in	9	WFR350196	Wheel Bracket 1/2 in