

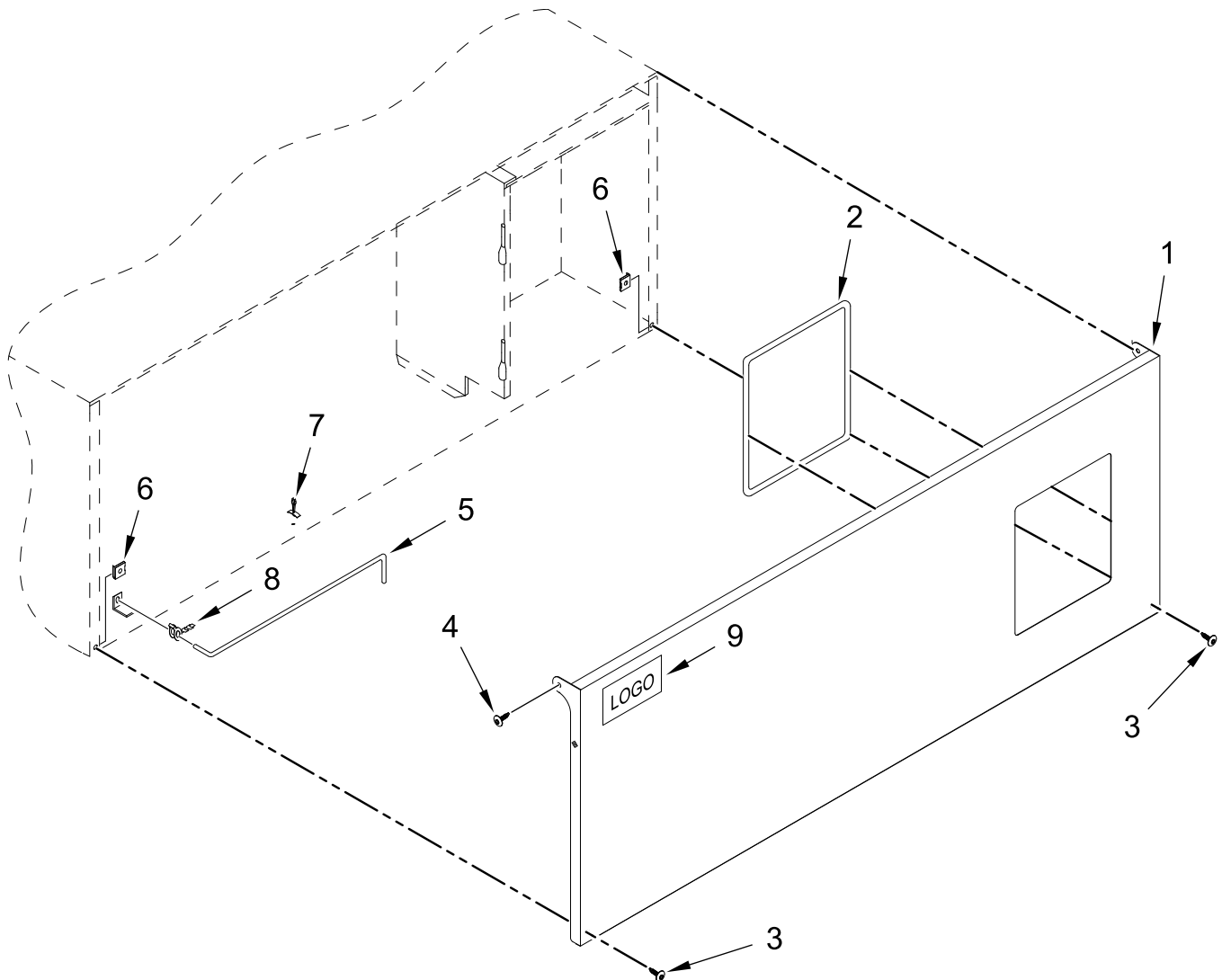


**COMMERCIAL GAS DRYER  
MULTI-LOAD STACKED SERVICE PARTS LIST**

**MODELS:**

MDG75PNJ (as of January 2017)  
MDG75MNW (as of January 2017)

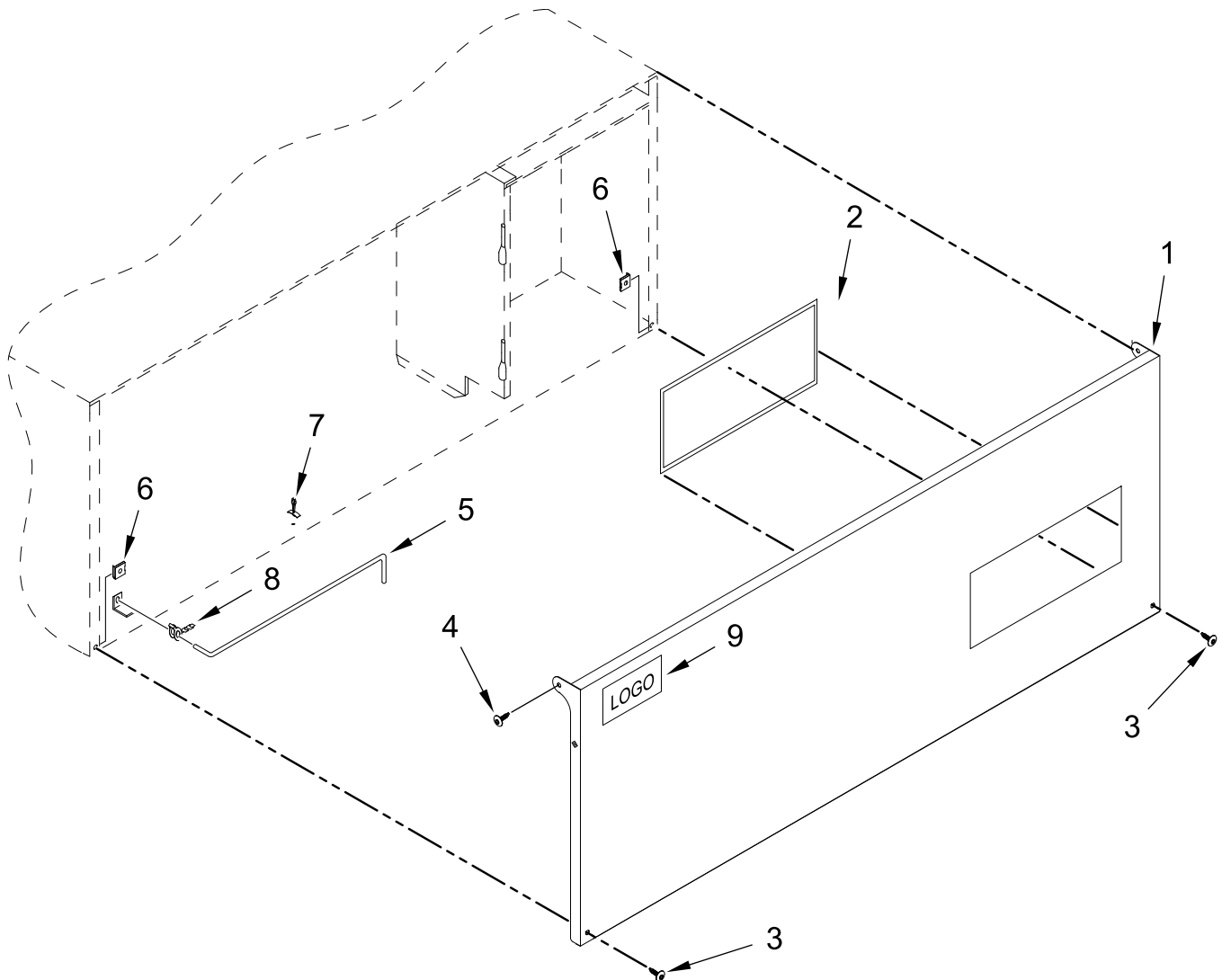
# PN CONTROL DOOR ASSEMBLY



# PN CONTROL DOOR ASSEMBLY

<u>Illus.</u> <u>No.</u>	<u>Part No.</u>	<u>Description</u>	<u>Illus.</u> <u>No.</u>	<u>Part No.</u>	<u>Description</u>	<u>Illus.</u> <u>No.</u>	<u>Part No.</u>	<u>Description</u>
1	WFR817295	OPL Control Door (includes No(s) 1 and 2)	4	WFR150317	Screw 10-32 x 1/4 in (TORX PLUS®)	8	WFR102601	Control Door Rod Retainer Clip
2	WFR117604	Foam Tape (When Ordering Specify Length, sold by the inch)	5	WFR102503	Control Door Support Rod	9	WFR112354	Maytag Badge
3	WFR150321	Screw 10-32 x 1/2 in	6	WFR154011	U-Nut 10-32			
			7	WFR102603	Control Door Rod Support Catch			

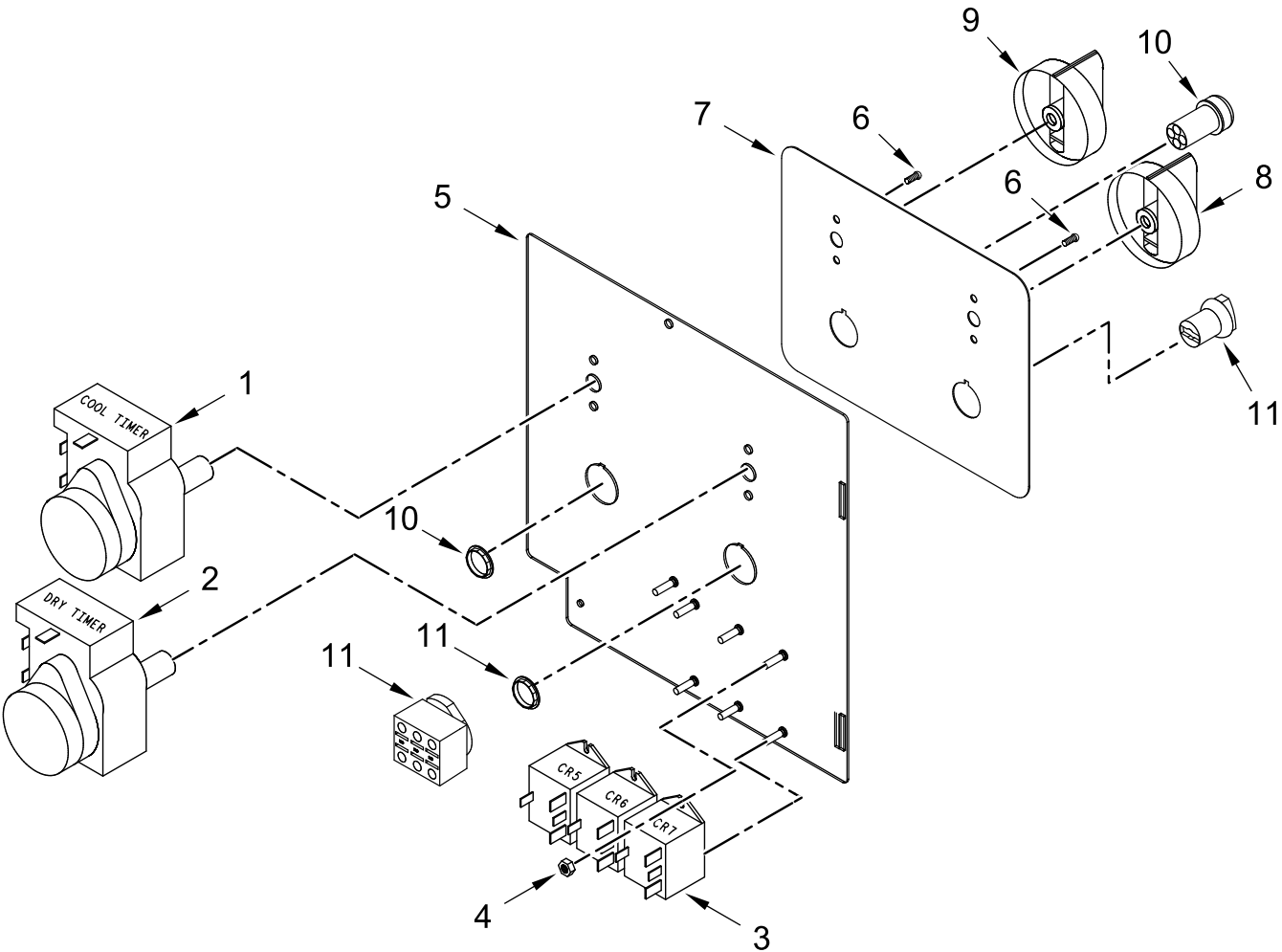
# MN CONTROL DOOR ASSEMBLY



# MN CONTROL DOOR ASSEMBLY

<u>Illus.</u> <u>No.</u>	<u>Part No.</u>	<u>Description</u>	<u>Illus.</u> <u>No.</u>	<u>Part No.</u>	<u>Description</u>	<u>Illus.</u> <u>No.</u>	<u>Part No.</u>	<u>Description</u>
1	WFR817288	Control Door (includes No(s) 1 and 2)	4	WFR150317	Screw 10-32 x 1/4 in (TORX PLUS®)	8	WFR102601	Control Door Rod Retainer Clip
2	WFR117604	Foam Tape (When Ordering Specify Length, sold by the inch)	5	WFR102503	Control Door Support Rod	9	WFR112354	Maytag Badge
3	WFR150321	Screw 10-32 x 1/2 in	6	WFR154011	U-Nut 10-32			
			7	WFR102603	Control Door Rod Support Catch			

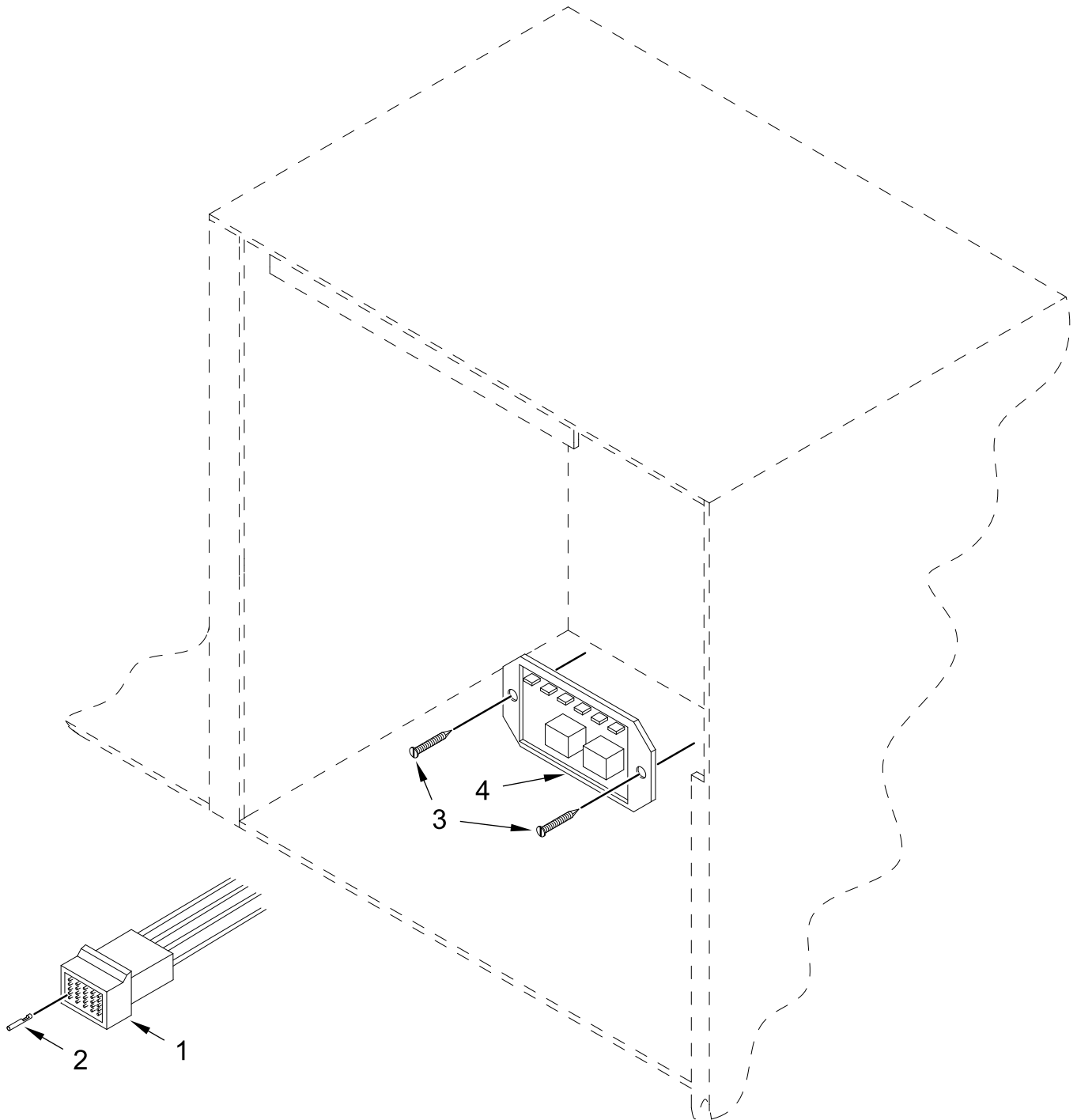
# DUAL TIMER ASSEMBLY



# DUAL TIMER ASSEMBLY

<u>Illus.</u> <u>No.</u>	<u>Part No.</u>	<u>Description</u>	<u>Illus.</u> <u>No.</u>	<u>Part No.</u>	<u>Description</u>	<u>Illus.</u> <u>No.</u>	<u>Part No.</u>	<u>Description</u>
1	WFR802837	15 Minute Timer with Terminals	6	WFR150110	Screw 8-32 x 1/4 in	11	WFR123549	Selector Switch (3 Position)
2	WFR802838	60 Minute Timer with Terminals	7	WFR112558	Dual Timer Cover Plate			(includes locking ring and connector)
3	WFR131428	Relay SPDT 24V	8	WFR124104	Pure Touch Knob with Red Pointer			
4	WFR152013	Nut 6-32	9	WFR124105	Pure Touch Knob with Blue Pointer			
5	WFR802840	Main Line Control Panel Assembly  (includes No(s) 1 through 11)	10	WFR100299	Green Lighted Push Button with N.O.  (includes locking ring)			
	WFR802836	Main Line Control Panel ONLY						

# DUAL TIMER BOX ASSEMBLY

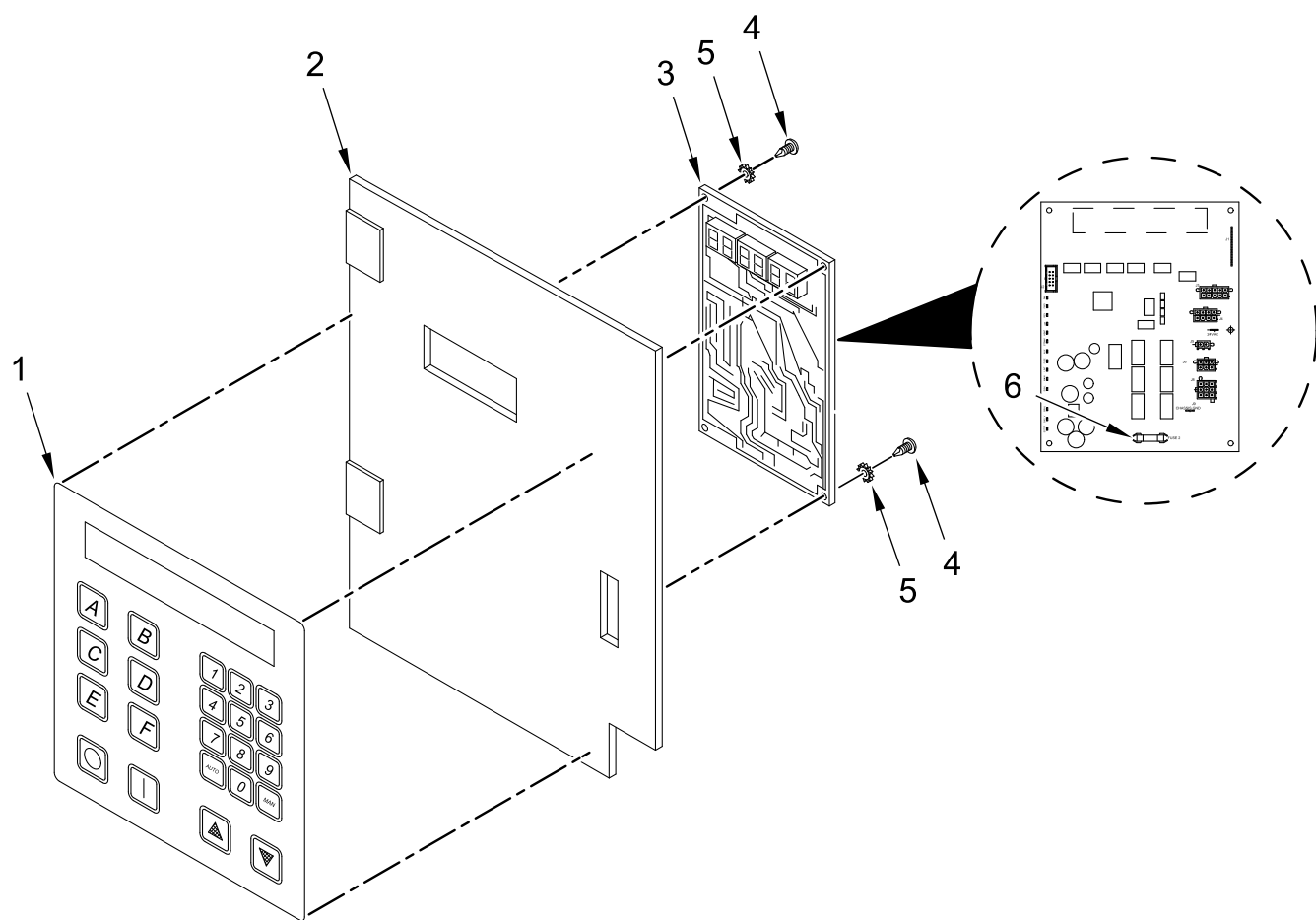




# DUAL TIMER BOX ASSEMBLY

<u>Illus.</u> <u>No.</u>	<u>Part No.</u>	<u>Description</u>	<u>Illus.</u> <u>No.</u>	<u>Part No.</u>	<u>Description</u>
1	WFR122641	15 Pin Connector	3	WFR150301	Screw 8-18 x 7/16 in
2	WFR122706	Female Crimp Socket	4	WFR884252	Reversing Timer 24 Volt (for reversing Dual Timer models Only)
	WFR122801	Pin / Socket Extraction Tool (Not Illustrated)			

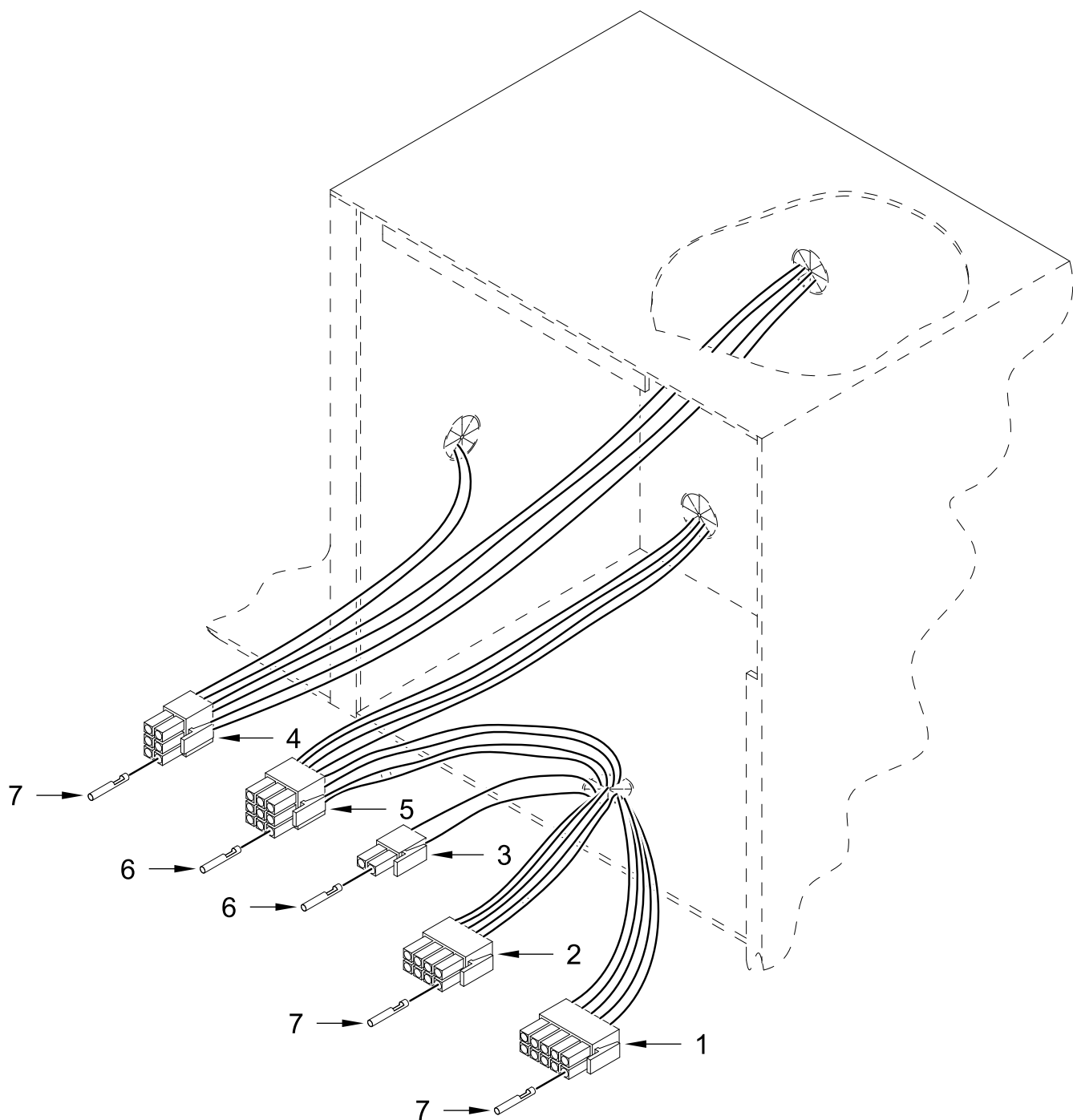
# MICROPROCESSOR CONTROL PANEL ASSEMBLY



# MICROPROCESSOR CONTROL PANEL ASSEMBLY

<u>Illus.</u> <u>No.</u>	<u>Part No.</u>	<u>Description</u>	<u>Illus.</u> <u>No.</u>	<u>Part No.</u>	<u>Description</u>	<u>Illus.</u> <u>No.</u>	<u>Part No.</u>	<u>Description</u>
1	WFR112577	Phase 7 OPL Keypad	3	WFR887003	Phase 7.2.2 Board	4	WFR150005	Screw 6-32 x 1/4 in
2	WFR814902	Phase 7 OPL Panel			(Sensor Activated Fire Extinguishing System and H2O Pressure Switch)	5	WFR153010	Lock Washer #6
						6	WFR136016	Fuse 5A (Fast Acting)

# MICROPROCESSOR CONTROL BOX ASSEMBLY



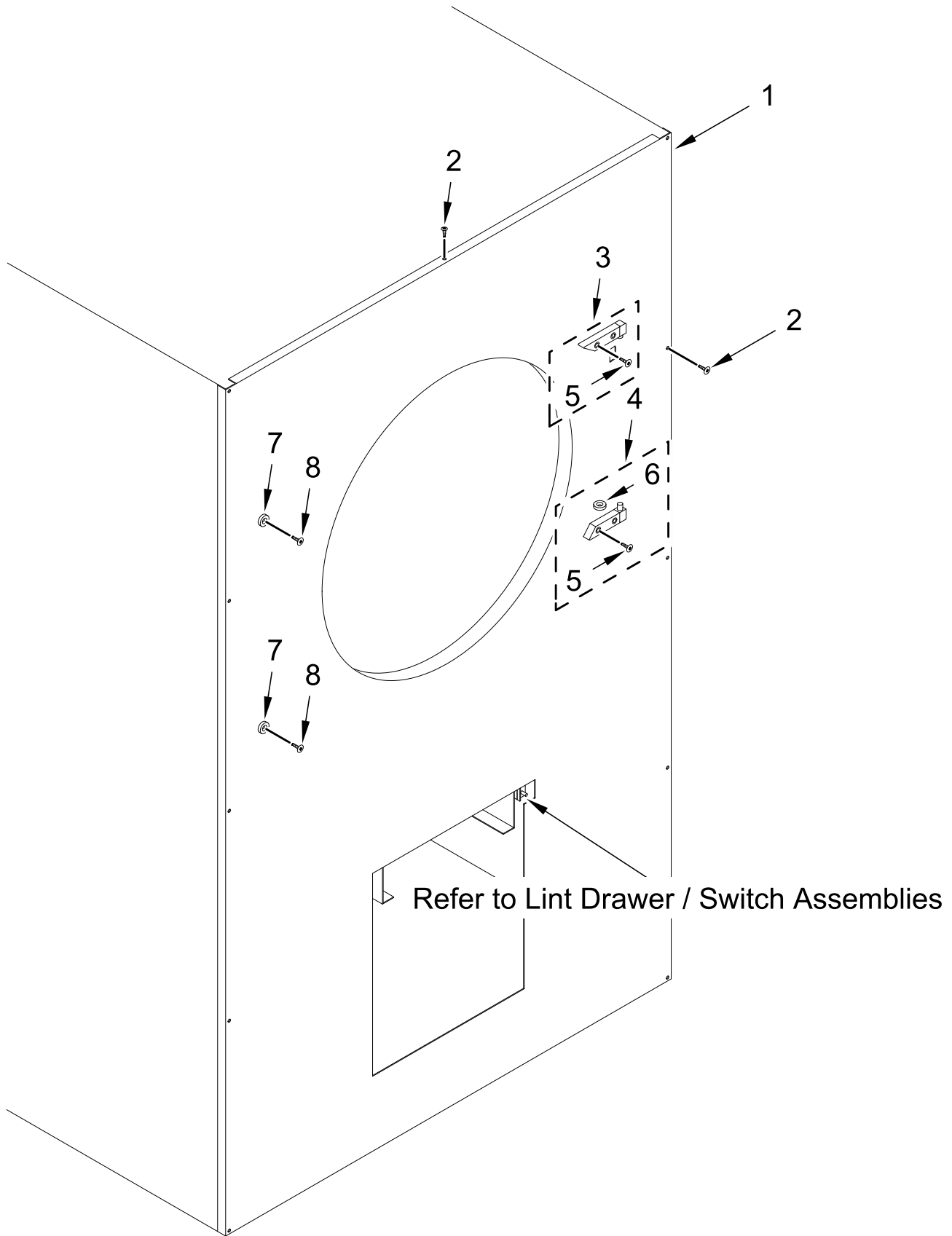
# MICROPROCESSOR CONTROL BOX ASSEMBLY

<u>Illus.</u> <u>No.</u>	<u>Part No.</u>	<u>Description</u>
1	WFR122681	10 Pin Connector
2	WFR122676	8 Pin Connector

<u>Illus.</u> <u>No.</u>	<u>Part No.</u>	<u>Description</u>
3	WFR122646	2 Pin Connector
4	WFR122683	6 Pin Connector
5	WFR122640	9 Pin Connector

<u>Illus.</u> <u>No.</u>	<u>Part No.</u>	<u>Description</u>
6	WFR122706	Female Crimp Socket
7	WFR122669	Female Crimp Socket

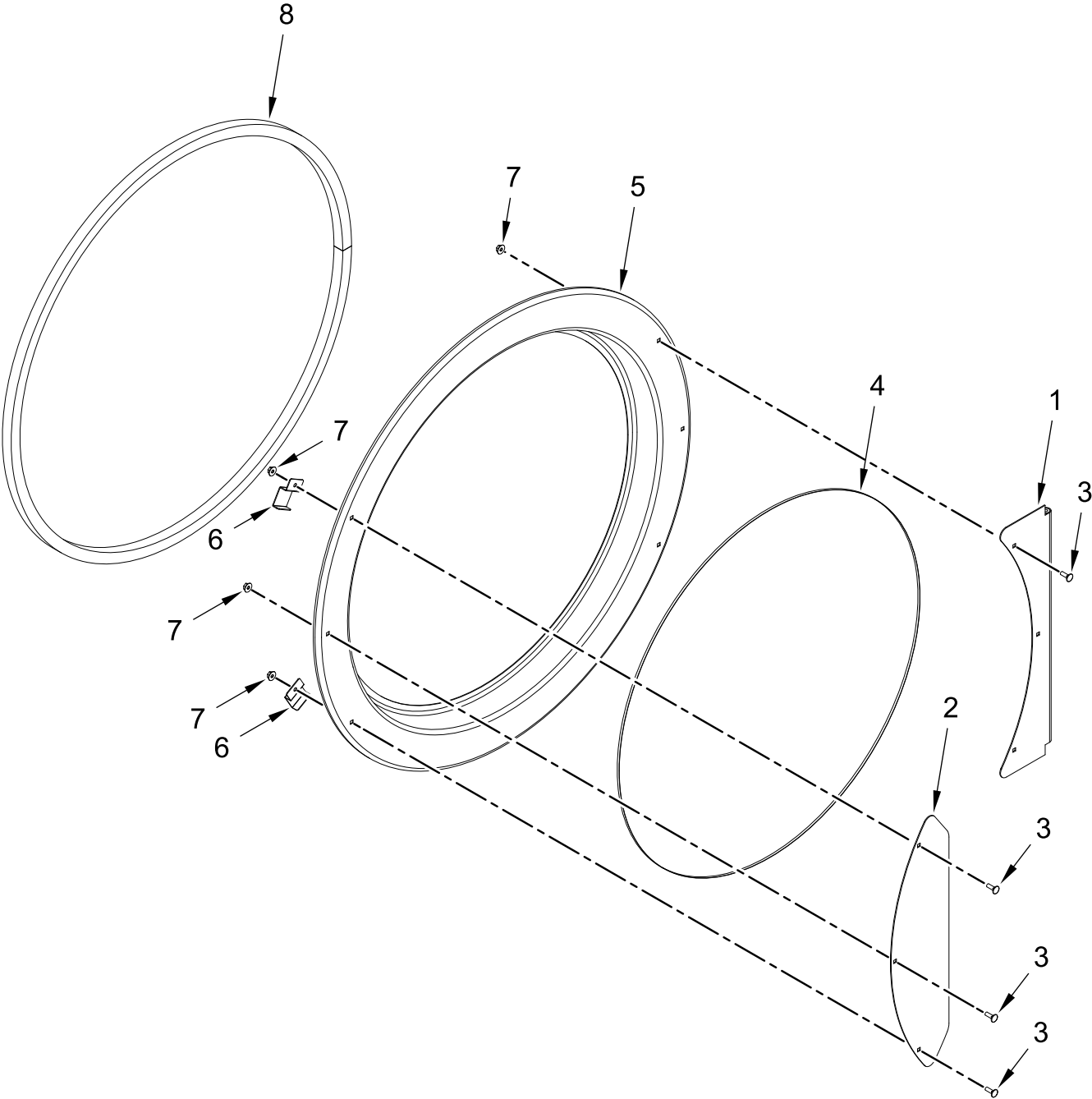
# FRONT PANEL ASSEMBLY



# FRONT PANEL ASSEMBLY

<u>Illus.</u> <u>No.</u>	<u>Part No.</u>	<u>Description</u>	<u>Illus.</u> <u>No.</u>	<u>Part No.</u>	<u>Description</u>	<u>Illus.</u> <u>No.</u>	<u>Part No.</u>	<u>Description</u>
1	WFR801604	Front Panel Assembly (Specify color when ordering)	4	WFR881151	Main Door Hinge Block Assembly (Bottom)  (includes No(s) 5 and 6)	7	WFR102004	Round Door Magnet 3/4 in
2	WFR150313	Screw 10-16 x 1/2 in (TORX®)				8	WFR152223	Screw 10-32 x 1/2 in (TORX®)
3	WFR881152	Main Door Hinge Block Assembly (Top)  (includes No(s) 5)	5	WFR150445	Cap Screw 1/4-20 x 3/4 in			
			6	WFR153031	Nylon Washer			

37-1/4 in. MAIN DOOR ASSEMBLY

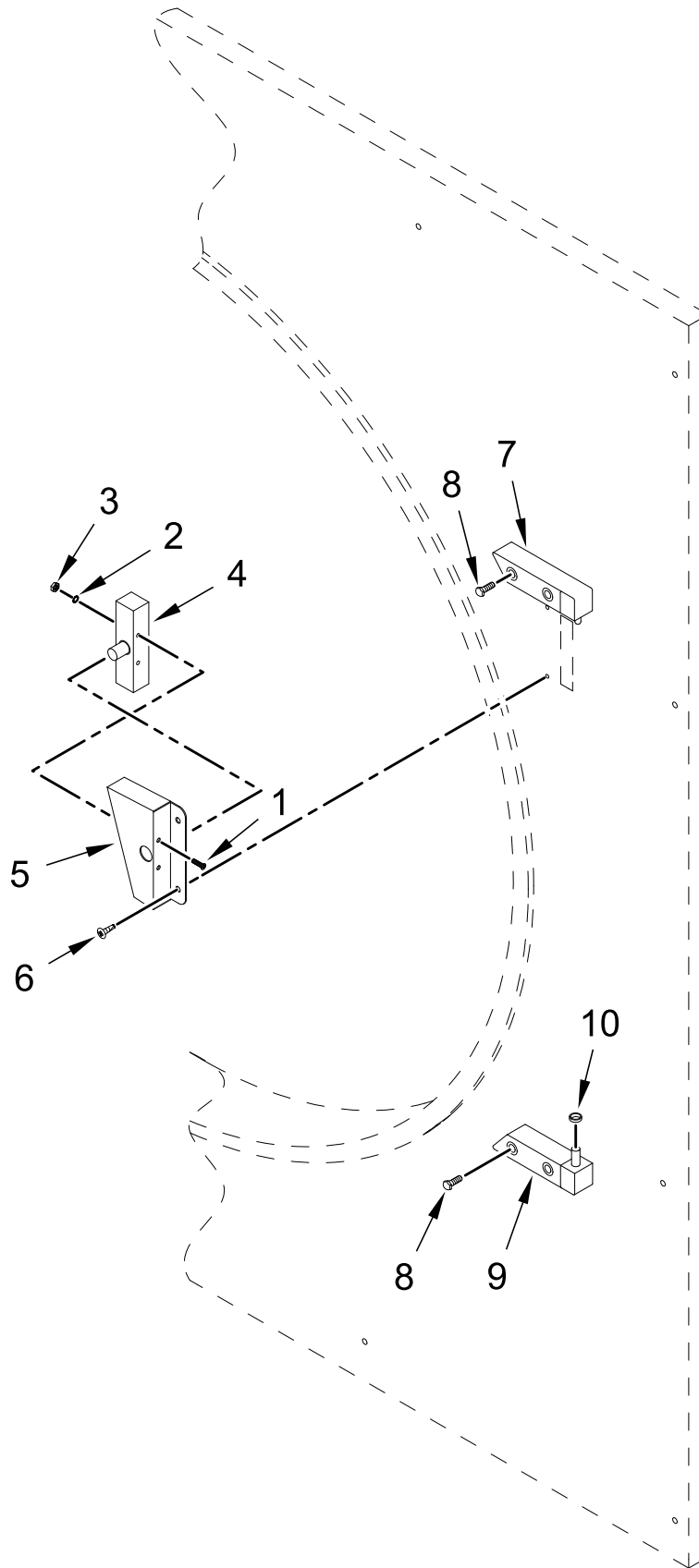




# 37-1/4 in. MAIN DOOR ASSEMBLY

<u>Illus.</u> <u>No.</u>	<u>Part No.</u>	<u>Description</u>	<u>Illus.</u> <u>No.</u>	<u>Part No.</u>	<u>Description</u>	<u>Illus.</u> <u>No.</u>	<u>Part No.</u>	<u>Description</u>
1	WFR835128	Door Hinge	5	WFR822631	Main Door Assembly Complete	8	WFR102357	Door Gasket
2	WFR883252	Door Handle					WFR401038	Black Adhesive (10.3 oz. Cartridge)
3	WFR150683	Carriage Bolt 1/4-20 x 5/8 in	6	WFR185522	Door Magnet Bracket			
4	WFR102221	Door Glass	7	WFR152014	Serrated Hex Flange Nut 1/4-20			
	WFR401038	Black Adhesive (10.3 oz. Cartridge)						

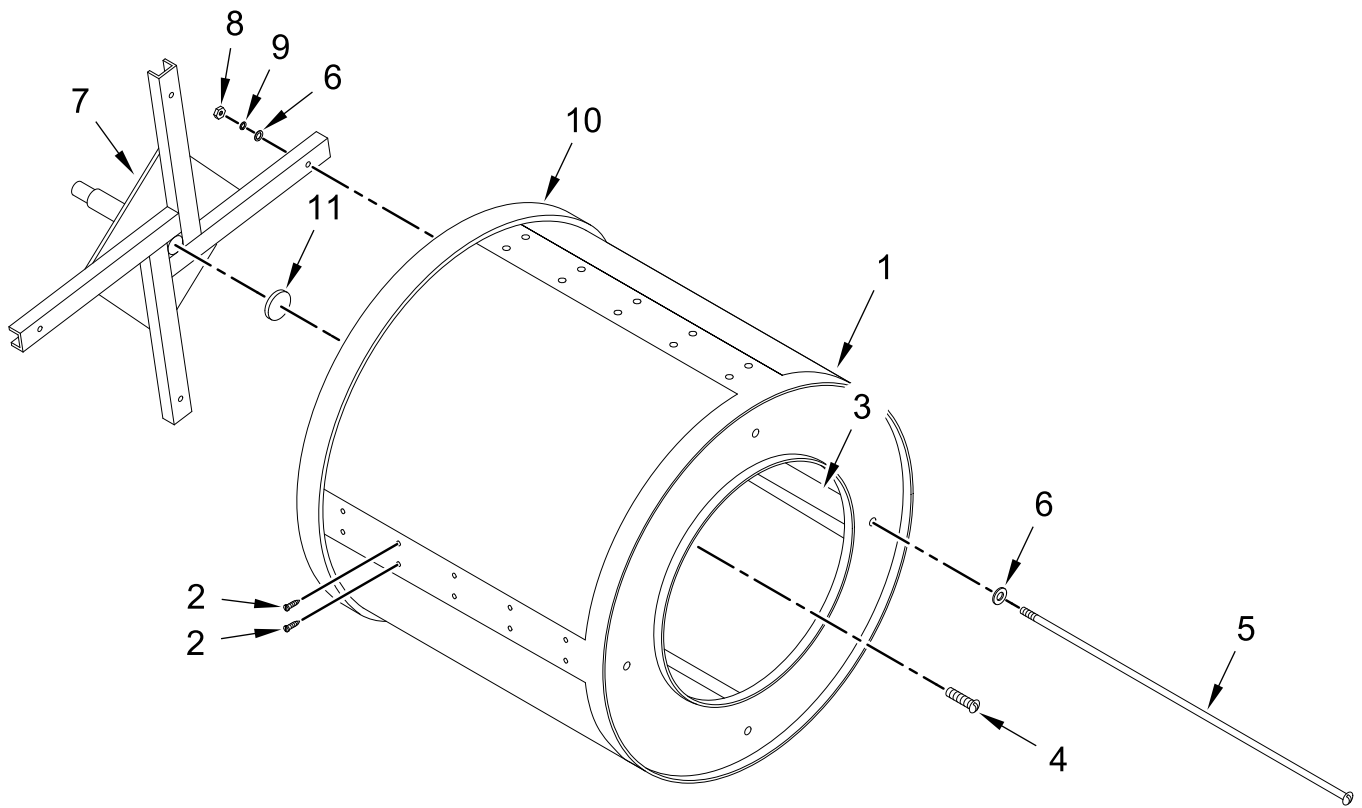
# 37-1/4 in. MAIN DOOR SWITCH ASSEMBLY



# 37-1/4 in. MAIN DOOR SWITCH ASSEMBLY

<u>Illus.</u> <u>No.</u>	<u>Part No.</u>	<u>Description</u>	<u>Illus.</u> <u>No.</u>	<u>Part No.</u>	<u>Description</u>
1	WFR150006	Screw 6-32 x 7/8 in	7	WFR881152	Main Door Hinge Block Assembly (Top)
2	WFR153010	Lock Washer #6			(includes No(s) 7 and 8)
3	WFR152013	Nut 6-32			
4	WFR137005	Switch, Single Pole Door	8	WFR150445	Cap Screw 1/4-20 x 3/4 in
5	WFR882866	Black Main Door Switch Housing	9	WFR881151	Main Door Hinge Block Assembly (Bottom)
	WFR883338	Black Main Door Switch with Housing Assembly			(includes No(s) 8, 9, and 10)
		(includes No(s) 1 through 5)	10	WFR153031	Nylon Washer
6	WFR150301	Screw 8-18 x 7/16 in			

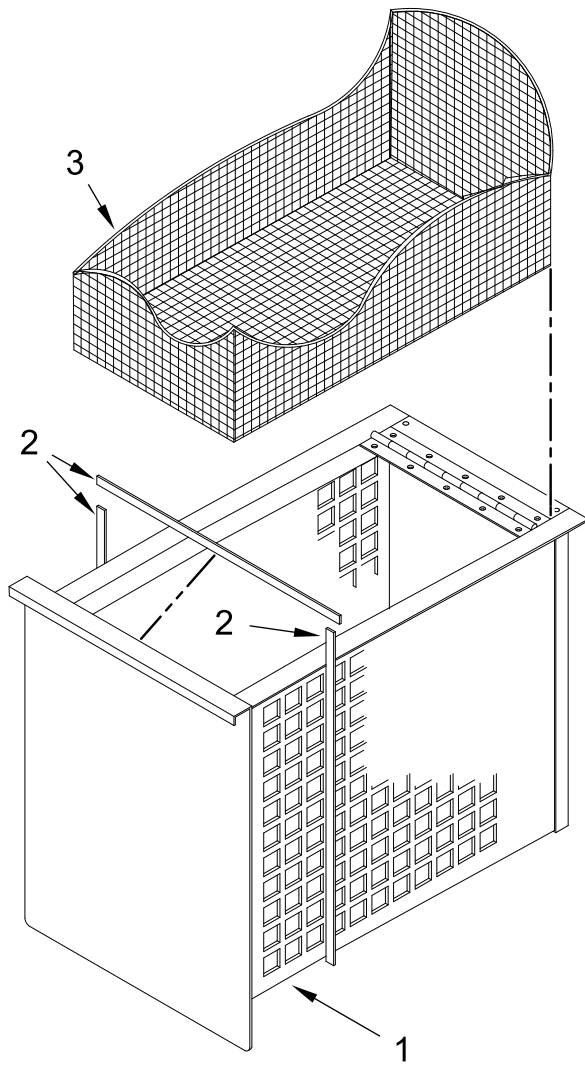
# TUMBLER / SUPPORT ASSEMBLIES



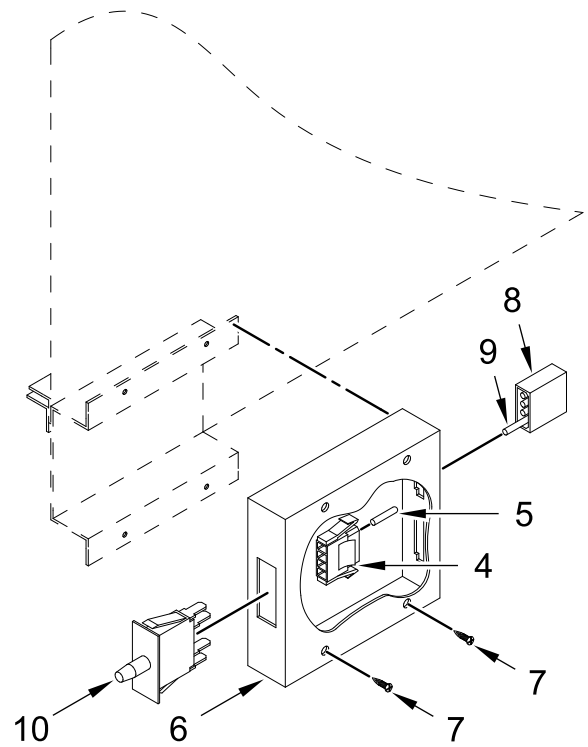
# TUMBLER / SUPPORT ASSEMBLIES

<u>Illus.</u> <u>No.</u>	<u>Part No.</u>	<u>Description</u>	<u>Illus.</u> <u>No.</u>	<u>Part No.</u>	<u>Description</u>	<u>Illus.</u> <u>No.</u>	<u>Part No.</u>	<u>Description</u>
1	WFR859032	Tumbler ONLY without Felt Collar	3	WFR390074	Tumbler Rib	9	WFR153005	Split Lock Washer 3/8 in
	WFR859305	Tumbler and Support Assembly Complete	4	WFR150518	Screw 5/16-18 x 3/8 in	10	WFR116000	Felt Collar ONLY
2	WFR150313	Screw 10-16 x 1/2 in (TORX®)	5	WFR100905	Tie Rod 3/8-16 X 37 in		WFR401010	Adhesive for Felt Collar (5 oz. tube)
	WFR150429	TORX® Hand Driver T25 (for removal of TORX® head screw)	6	WFR153004	Washer 3/8 x 1 in	11	WFR115986	Felt Tumbler Pad
			7	WFR800613	Tumbler Support ONLY			
			8	WFR152027	Lock Nut 3/8-16			

# LINT DRAWER / SWITCH ASSEMBLIES



Lint Drawer

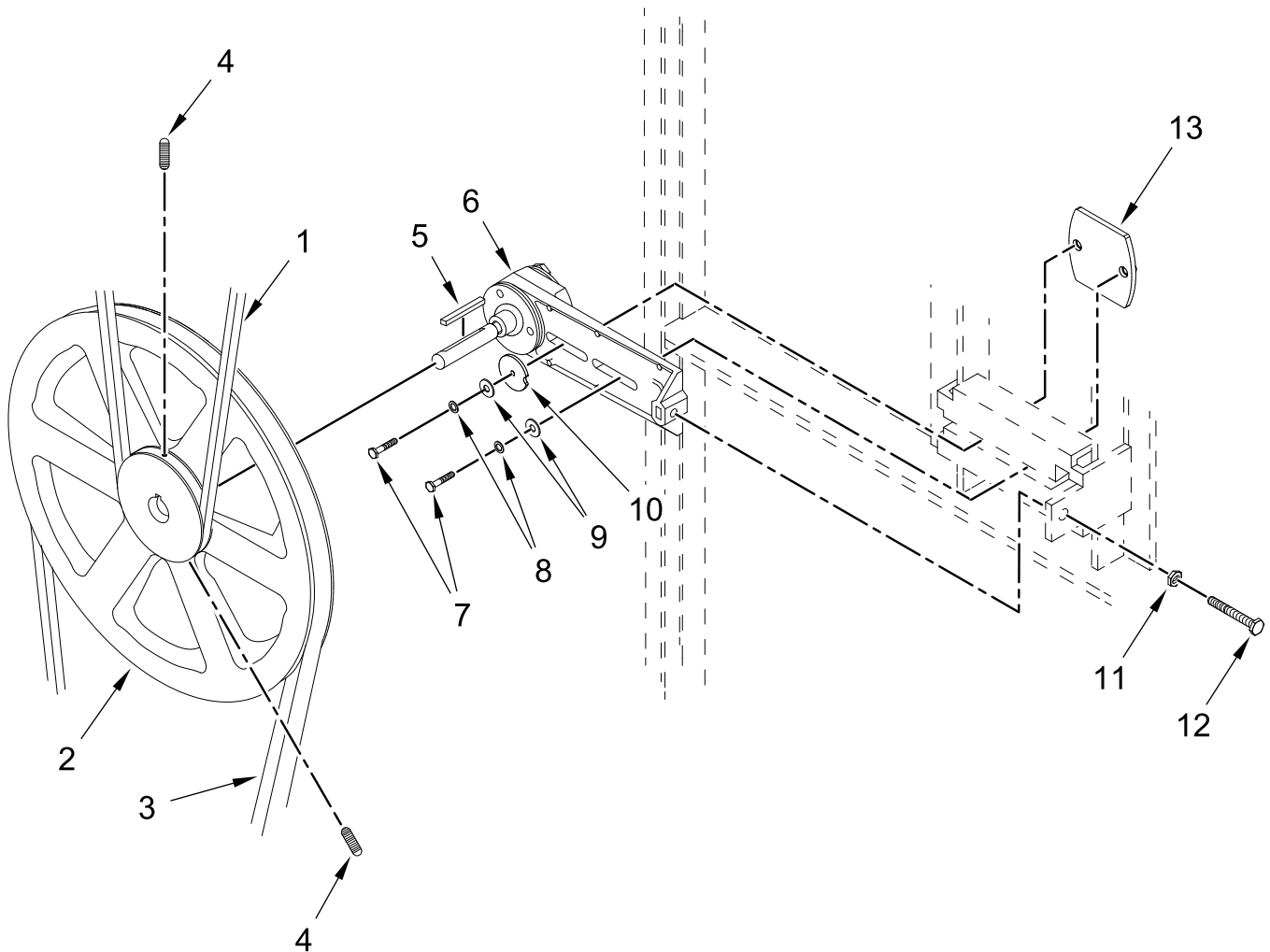


Lint Drawer Switch Assy

# LINT DRAWER / SWITCH ASSEMBLIES

<u>Illus.</u> <u>No.</u>	<u>Part No.</u>	<u>Description</u>	<u>Illus.</u> <u>No.</u>	<u>Part No.</u>	<u>Description</u>	<u>Illus.</u> <u>No.</u>	<u>Part No.</u>	<u>Description</u>
1	WFR884055	White Lint Drawer Assembly	5	WFR122701	Female Crimp Socket	7	WFR150301	Screw 8-18 x 7/16 in
2	WFR117605	Foam Tape (When Ordering Specify Length)		WFR122801	Pin / Socket Extraction Tool (Not Illustrated)	8	WFR122604	4 Pin Connector
3	WFR108222	Lint Screen Assembly	6	WFR833123	Lint Drawer Switch Box Assembly	9	WFR122700	Male Crimp Pin
4	WFR122605	4 Pin Connector		WFR304136	Lint Drawer Switch Box Cover ONLY	10	WFR122116	Door Switch

# IDLER BEARING ASSEMBLY

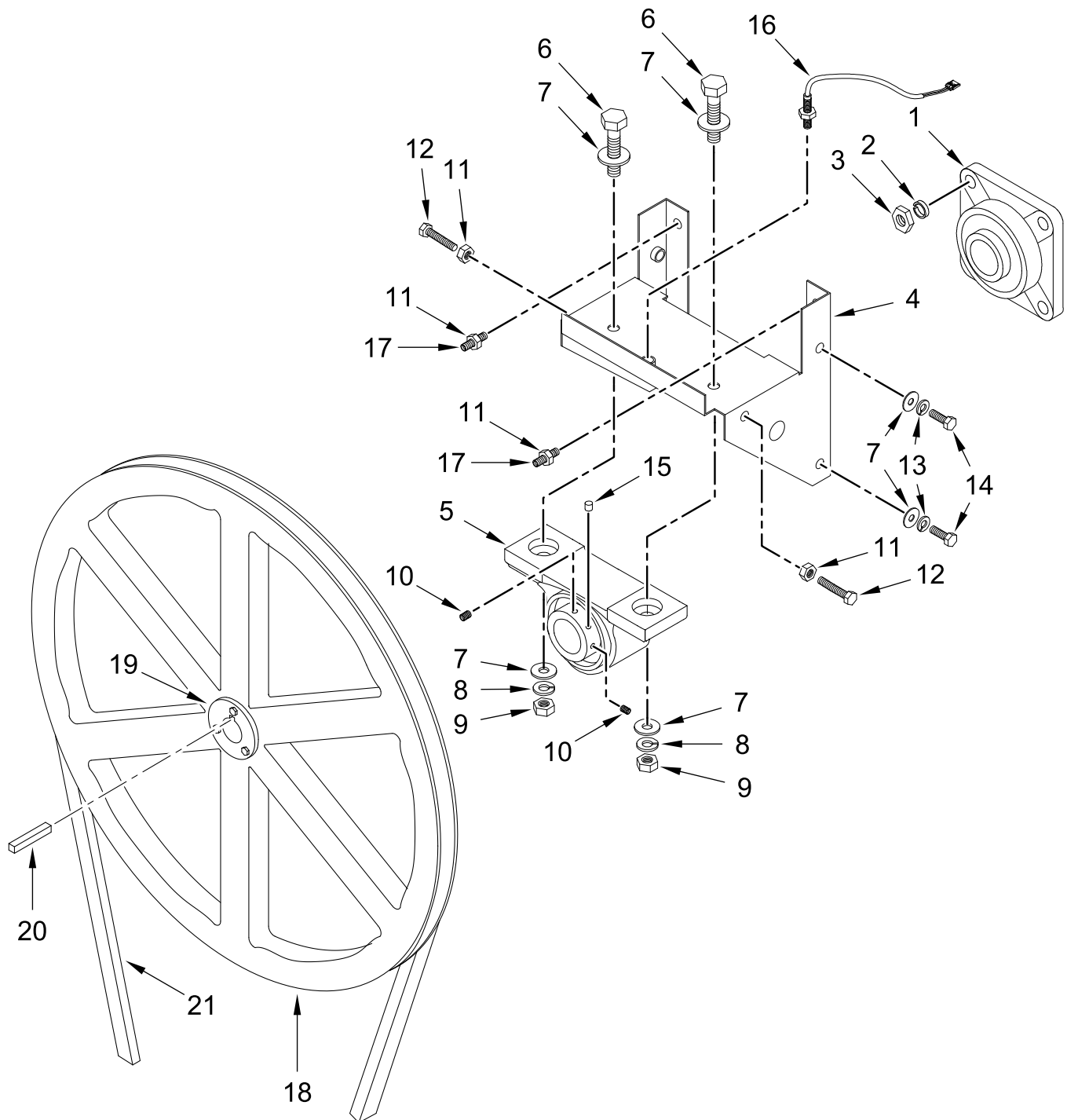




# IDLER BEARING ASSEMBLY

<u>Illus.</u> <u>No.</u>	<u>Part No.</u>	<u>Description</u>	<u>Illus.</u> <u>No.</u>	<u>Part No.</u>	<u>Description</u>	<u>Illus.</u> <u>No.</u>	<u>Part No.</u>	<u>Description</u>
1	WFR100107	V Belt 5L670R (for reversing models)	4	WFR154301	Set Screw 5/16-18 x 1 in	10	WFR315445	Heavy Duty Idler Washer
	WFR100108	V BELT 5L680R (for non-reversing models)	5	WFR100705	Key 3/16 x 3/16 x 1 3/8 in	11	WFR152004	Nut 5/16-18
2	WFR101140	Compound Pulley	6	WFR882576	Idler Bearing Assembly Complete	12	WFR150509	Bolt 5/16-18 x 3 in
3	WFR100109	V-Belt 4L-650 (Idler to Motor)  (for reversing models)			(includes No(s) 5 through 12)	13	WFR884384	Idler Square Washer
	WFR100194	V-Belt 4L-720 (Idler to Motor)  (for non-reversing models)	7	WFR150600	Bolt 3/8-16 x 1 1/2 in			
			8	WFR153005	Split Lock Washer 3/8 in			
			9	WFR153004	Washer 3/8 x 1 in			

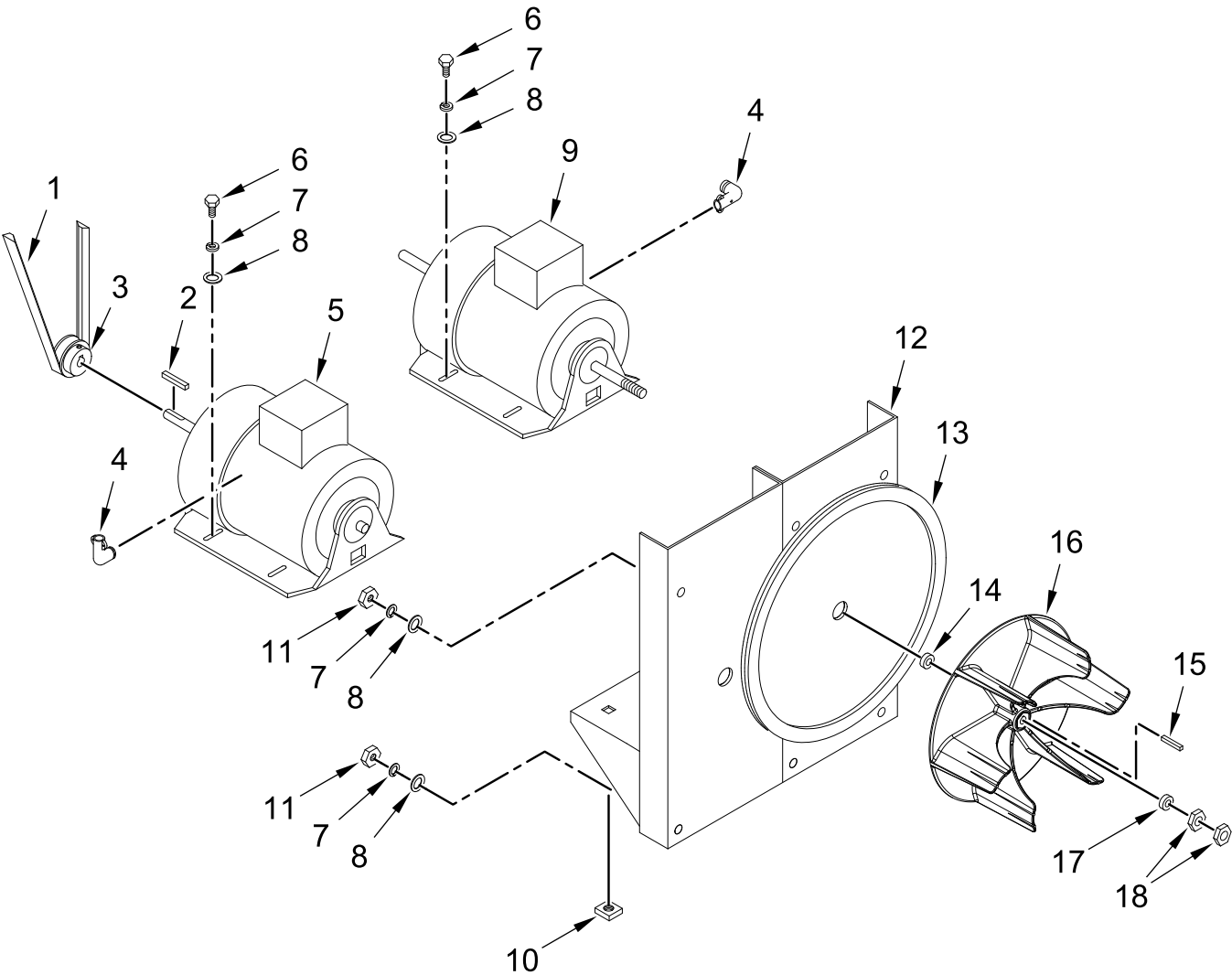
# TUMBLER BEARING ASSEMBLY



# TUMBLER BEARING ASSEMBLY

<u>Illus.</u> <u>No.</u>	<u>Part No.</u>	<u>Description</u>	<u>Illus.</u> <u>No.</u>	<u>Part No.</u>	<u>Description</u>	<u>Illus.</u> <u>No.</u>	<u>Part No.</u>	<u>Description</u>
1	WFR880220	Flange Bearing 1 3/4 in	11	WFR152004	Nut 5/16-18	19	WFR101110	Taper Lock Bushing (for reversing models Only)
2	WFR153025	Split Lock Washer 9/16 in	12	WFR150621	Tap Bolt 5/16-18 x 1 1/2 in	20	WFR100735	Shaft Key (for reversing models)
3	WFR152050	Nut 9/16-12	13	WFR153002	Split Lock Washer 5/16 in		WFR100724	Shaft Key (for non-reversing models)
4	WFR883387	Bearing Assembly Complete  (includes No(s) 4 through 17)	14	WFR150501	Tap Bolt 5/16-18 x 3/4 in	21	WFR100107	V Belt 5L670R (for reversing models)
5	WFR880779	Pillow Block Bearing 1 3/8 in	15	WFR170608	Sintered 8 Magnet		WFR100108	V BELT 5L680R (for non-reversing models)
6	WFR150601	Bolt 3/8 x 2 in	16	WFR883386	Rotational Sensor Assembly			
7	WFR153004	Washer 3/8 x 1 in	17	WFR150610	Set Screw 5/16-18 x 1 1/2 in			
8	WFR153005	Split Lock Washer 3/8 in	18	WFR101252	Pulley 18 in (for reversing models)			
9	WFR152005	Nut 3/8-16		WFR884042	Pulley 18 in (for non-reversing models)			
10	WFR154384	Set Screw 5/16-24 x 5/16 in (Black)						

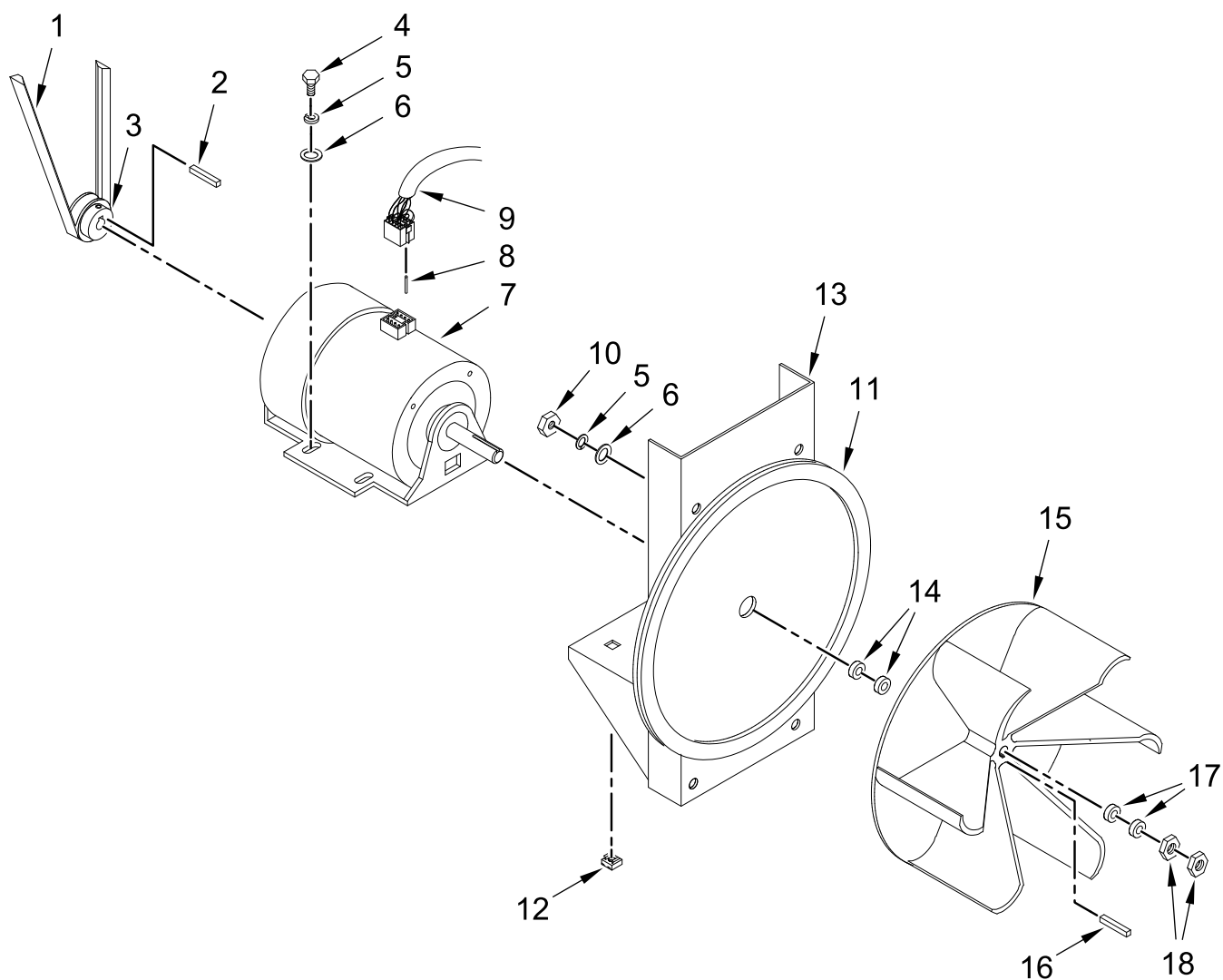
# REVERSING MOTOR MOUNT ASSEMBLY



# REVERSING MOTOR MOUNT ASSEMBLY

<u>Illus.</u> <u>No.</u>	<u>Part No.</u>	<u>Description</u>	<u>Illus.</u> <u>No.</u>	<u>Part No.</u>	<u>Description</u>	<u>Illus.</u> <u>No.</u>	<u>Part No.</u>	<u>Description</u>
1	WFR100109	V-Belt 4L-650 (Idler to Motor)	7	WFR153002	Split Lock Washer 5/16 in	13	WFR117604	Foam Tape (When Ordering Specify Length, sold by the inch)
2	WFR100701	Key 3/16 X 3/16 X 1 in	8	WFR153001	Washer 5/16 in	14	WFR153051	Washer 3/4 in
3	WFR101130	Motor Pulley 5/8 x 2-1/2 in	9	WFR181203	Motor with 3/4 in. Shaft 1 hp 208-230V (3ø) 60Hz 190-380V (3ø) 50Hz	15	WFR100714	Key 3/16 X 3/16 X 1-7/8 in
4	WFR120200	Connector 3/8 x 90 in	10	WFR154000	Tinnerman® Nut 5/16-18	16	WFR882670	Impellor 16 in. with 3/4 in. Bore
5	WFR181003	Motor 1/2 hp 208/230/380/460v (3ø) 50/60 Hz	11	WFR152004	Nut 5/16-18	17	WFR153050	Washer 1/2 x 1 1/6 in
6	WFR150501	Tap Bolt 5/16-18 x 3/4 in	12	WFR817535	Reversing Motor Mount ONLY	18	WFR152006	Nut 1/2-20

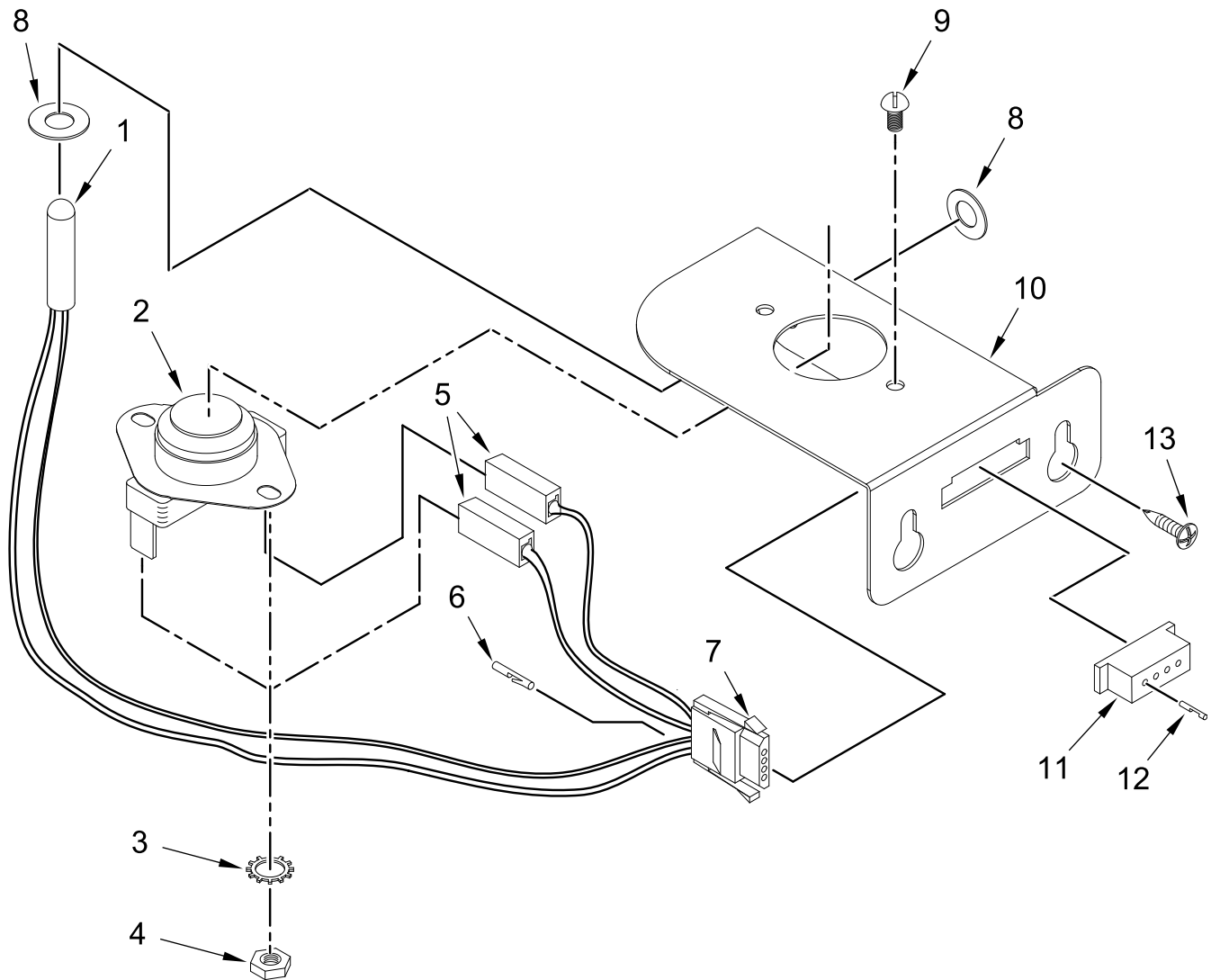
# NON-REVERSING MOTOR MOUNT ASSEMBLY



# NON-REVERSING MOTOR MOUNT ASSEMBLY

<u>Illus.</u> <u>No.</u>	<u>Part No.</u>	<u>Description</u>	<u>Illus.</u> <u>No.</u>	<u>Part No.</u>	<u>Description</u>	<u>Illus.</u> <u>No.</u>	<u>Part No.</u>	<u>Description</u>
1	WFR100194	V-Belt 4L-720 (Idler to Motor)	8	WFR122701	Female Crimp Socket	16	WFR100714	Key 3/16 X 3/16 X 1-7/8 in
2	WFR100701	Key 3/16 X 3/16 X 1 in		WFR122801	Pin / Socket Extraction Tool (Not Illustrated)	17	WFR153050	Washer 1/2 x 1 1/6 in
3	WFR101130	Motor Pulley 5/8 x 2-1/2 in	9	WFR137030	8 Pin Connector	18	WFR152006	Nut 1/2-20
4	WFR150501	Tap Bolt 5/16-18 x 3/4 in	10	WFR152004	Nut 5/16-18			
5	WFR153002	Split Lock Washer 5/16 in	11	WFR117604	Foam Tape (When Ordering Specify Length, sold by the inch)			
6	WFR153001	Washer 5/16 in	12	WFR154000	Tinnerman® Nut 5/16-18			
7	WFR100073	Motor with Plug 1 hp 120/208/230v (1Ø) 60Hz	13	WFR803561	Non-Reversing Motor Mount ONLY			
	WFR803876	Motor Mount Assembly with Plug (Complete) 1 hp 120/230v (1Ø) 60Hz	14	WFR153051	Washer 3/4 in			
			15	WFR882670	Impellor 16 in. with 3/4 in. Bore			

# PN SENSOR BRACKET ASSEMBLY

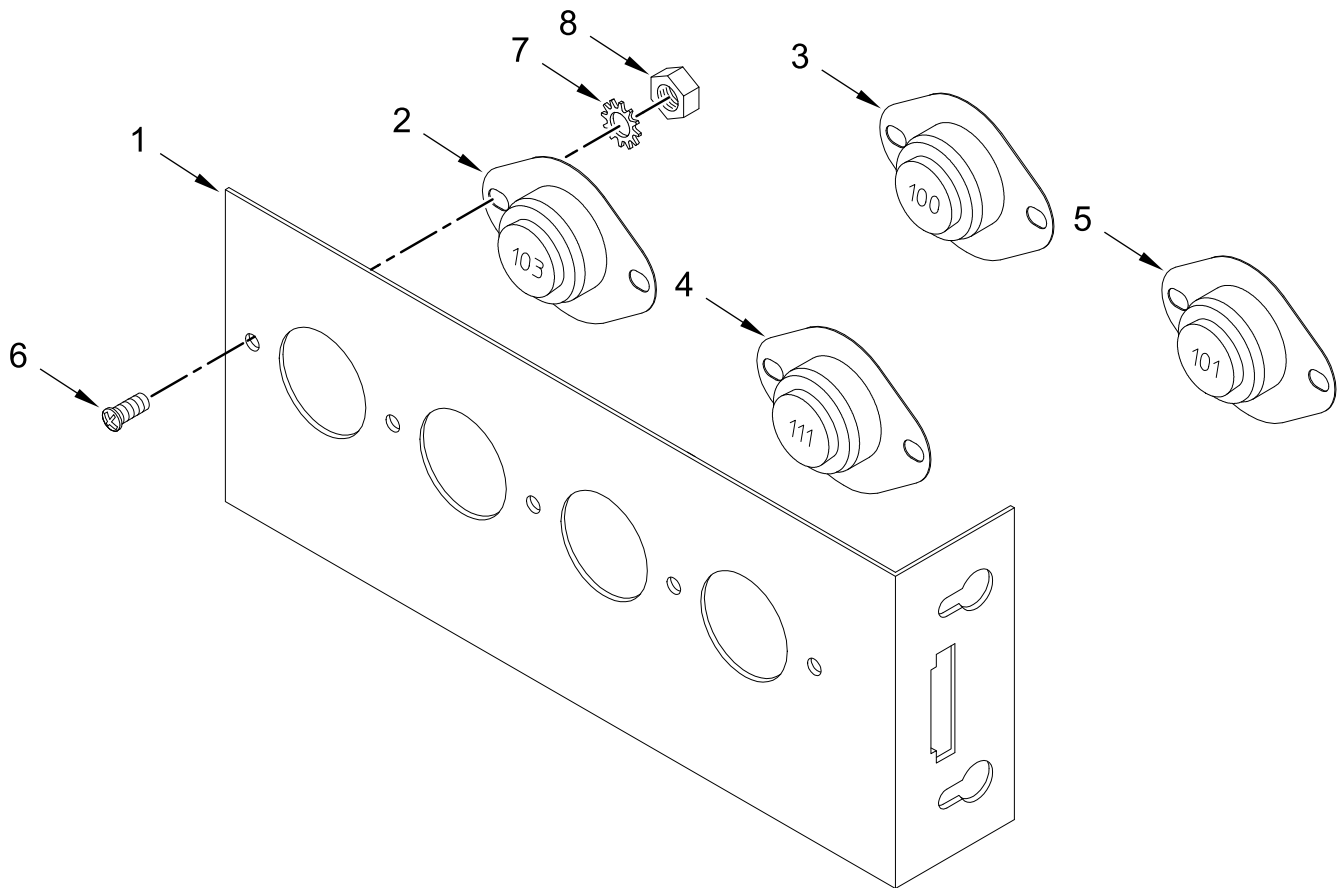




# PN SENSOR BRACKET ASSEMBLY

<u>Illus.</u> <u>No.</u>	<u>Part No.</u>	<u>Description</u>	<u>Illus.</u> <u>No.</u>	<u>Part No.</u>	<u>Description</u>	<u>Illus.</u> <u>No.</u>	<u>Part No.</u>	<u>Description</u>
1	WFR880251	Temperature Sensor Probe Assembly  (includes No(s) 1 and 5 through 8)	7	WFR122605	4 Pin Connector	11	WFR122604	4 Pin Connector
2	WFR130103	Hi-Limit Thermostat 225°	8	WFR154007	Push On Fastener 1/4 in	12	WFR122700	Male Crimp Pin
3	WFR153010	Lock Washer #6	9	WFR150005	Screw 6-32 x 1/4 in	13	WFR150301	Screw 8-18 x 7/16 in
4	WFR152000	Nut 6-32	10	WFR817046	Temperature Sensor Assembly Complete  (includes No(s) 1 through 10)			
5	WFR121028	Insulated Female Terminal		WFR322214	Temperature Sensor Bracket ONLY			
6	WFR122701	Female Crimp Socket						

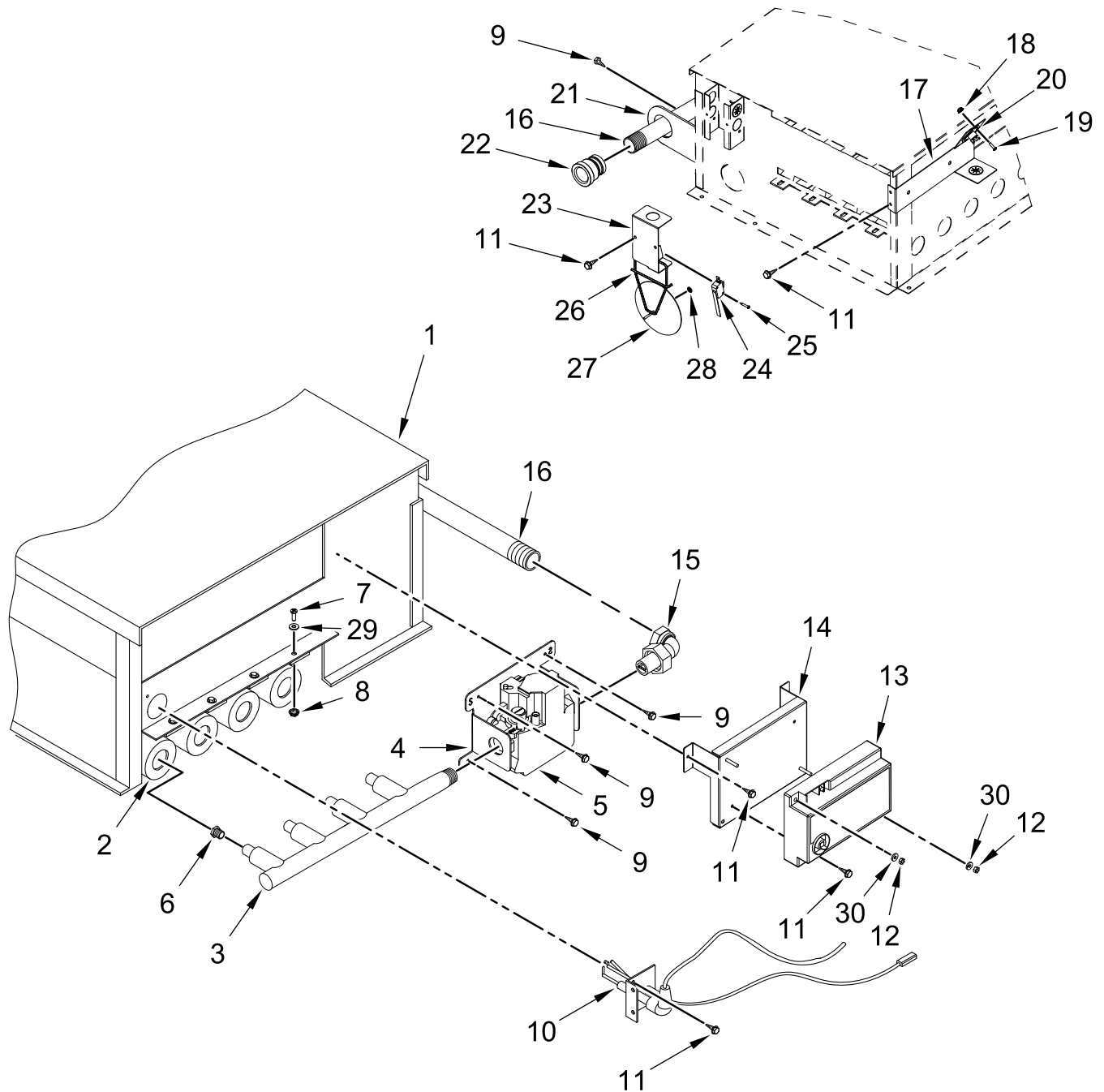
# MN SENSOR BRACKET ASSEMBLY



# MN SENSOR BRACKET ASSEMBLY

<u>Illus.</u> <u>No.</u>	<u>Part No.</u>	<u>Description</u>	<u>Illus.</u> <u>No.</u>	<u>Part No.</u>	<u>Description</u>	<u>Illus.</u> <u>No.</u>	<u>Part No.</u>	<u>Description</u>
1	WFR818034	Temperature Sensor Assembly Complete	2	WFR130103	Hi-Limit Thermostat 225°	5	WFR130101	Thermostat 180°
	WFR322062	Temperature Sensor Bracket ONLY	3	WFR130100	Thermostat 150°	6	WFR150005	Screw 6-32 x 1/4 in
			4	WFR130111	Thermostat 130°	7	WFR153010	Lock Washer #6
						8	WFR152000	Nut 6-32

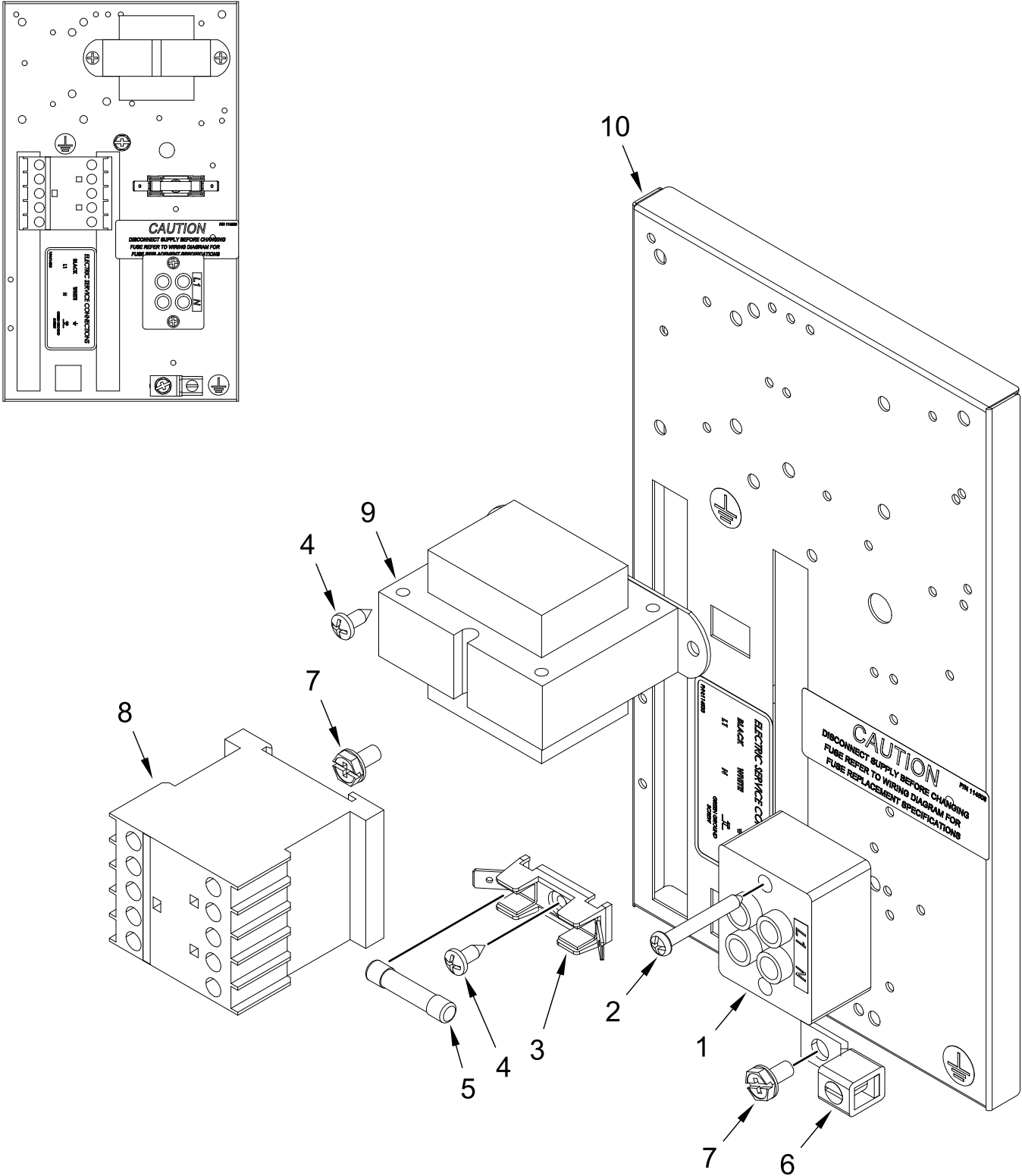
# DIRECT SPARK IGNITION BURNER ASSEMBLY



# DIRECT SPARK IGNITION BURNER ASSEMBLY

<u>Illus.</u> <u>No.</u>	<u>Part No.</u>	<u>Description</u>	<u>Illus.</u> <u>No.</u>	<u>Part No.</u>	<u>Description</u>	<u>Illus.</u> <u>No.</u>	<u>Part No.</u>	<u>Description</u>
1	WFR882898	Natural Gas Burner Assembly Complete  (includes No(s) 1 to 5 and 7 to 31)	7	WFR150108	Screw 8-32 x 1/2 in	20	WFR130201	Thermostat Hi-Limit Reset Switch 330°
	WFR882899	Propane Gas Burner Assembly Complete  (includes No(s) 1 to 5 and 7 to 31)	8	WFR151001	Nut 8-32	21	WFR318700	Pipe Bracket
	WFR814832	Burner Box ONLY	9	WFR150300	Screw 10-16 x 1/2 in (Hex Washer TEK CrimpTite®)	22	WFR143000	Reducing Coupling 3/4 to 1/2 in
2	WFR141105	Large Burner Tube	10	WFR884265	Ignitor Probe Assembly	23	WFR350283	Sail Switch Box Cover and Bracket ONLY  (refer to Sail Switch Assembly)
3	WFR141210	Manifold 3/4 in. (4-port)		WFR884279	High Voltage Wire with 1/4 in. Spade Connection	24	WFR122200	Service Switch
4	WFR345590	Gas Valve Bracket	11	WFR150309	Screw 10-16 x 1/2 in (Hex Head TEK CrimpTite®)	25	WFR150303	Screw #4 x 3/4 in
5	WFR887274	Gas Valve (Natural Gas)	12	WFR152013	Nut 6-32	26	WFR105500	Sail Switch Rod Assembly
	WFR887273	Gas Valve (Liquid Propane Gas)	13	WFR883849	Direct Spark Ignition Module with High Voltage Wire	27	WFR319202	Sail Switch Damper
	WFR883329	Propane Gas Conversion Kit	14	WFR810029	Direct Spark Ignition Module Mounting Bracket	28	WFR154002	Push-On Fastener 1/8 in
6	WFR140819	Burner Orifice #30 (Natural Gas) ONLY	15	WFR141317	Union Elbow 1/2 in	29	WFR153000	SAE Washer #8
	WFR140803	Burner Orifice #49 (Propane Gas) ONLY  (Consult factory for elevations +2K Ft)	16	WFR142809	Pipe 1/2 x 29 1/8 in	30	WFR153017	SAE Washer #6
			17	WFR319704	Hi-Limit Mounting Bracket			
			18	WFR151000	Nut 6-32			
			19	WFR150001	Screw 6-32 x 1/2 in			

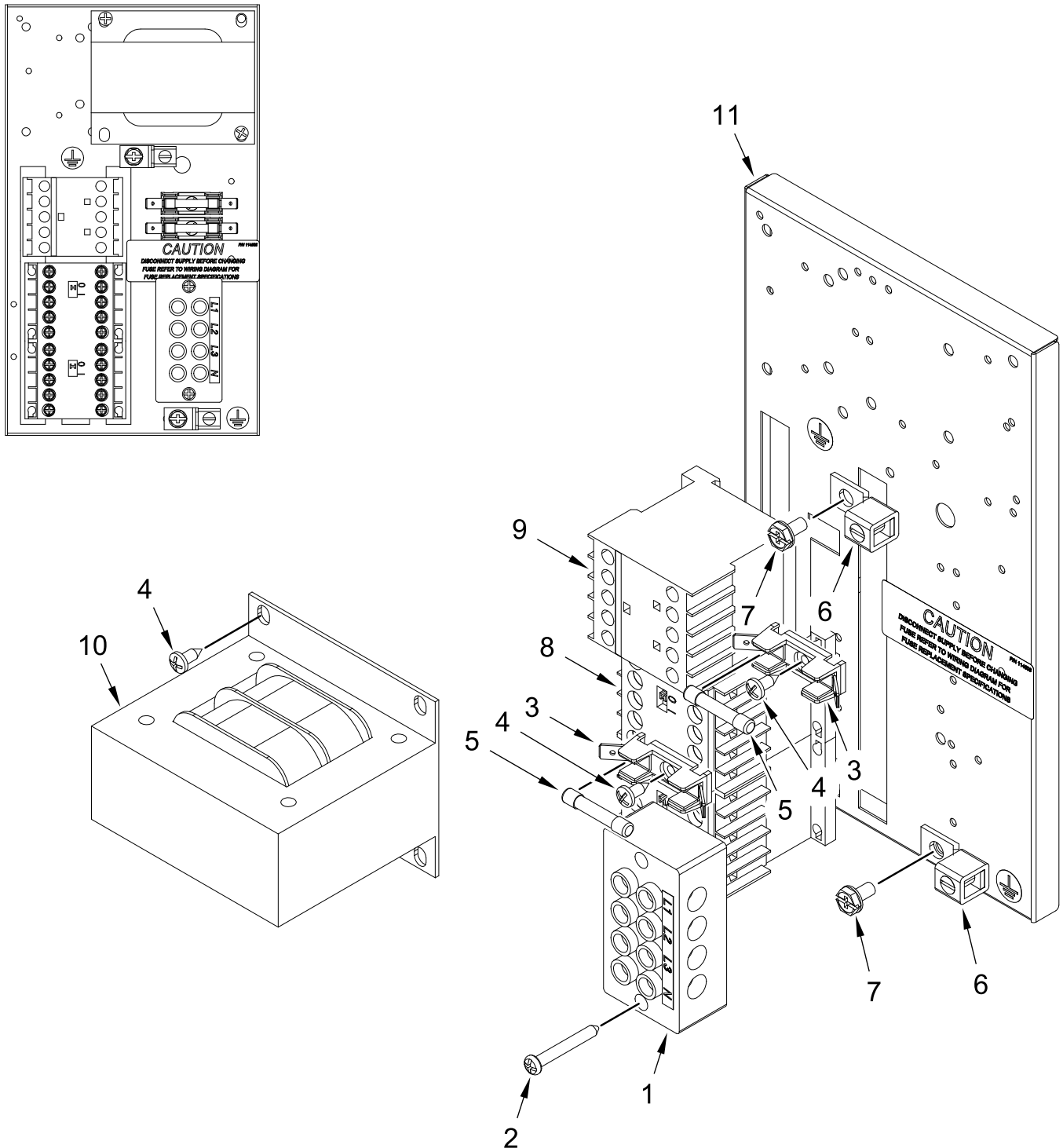
## 120V (1Ø) REAR ELECTRICAL PANEL ASSEMBLY



# 120V (1Ø) REAR ELECTRICAL PANEL ASSEMBLY

<u>Illus.</u> <u>No.</u>	<u>Part No.</u>	<u>Description</u>	<u>Illus.</u> <u>No.</u>	<u>Part No.</u>	<u>Description</u>	<u>Illus.</u> <u>No.</u>	<u>Part No.</u>	<u>Description</u>
1	WFR120716	Terminal Block	5	WFR136049	Fuse 3/4 Amp (Slo-Blo) (for 120V 60 Hz Models Only)	8	WFR131396	Contactor K-Line 24v 12A 3PH
2	WFR150539	Screw 8 x 1 1/4 in				9	WFR825462	Transformer Assembly – 115 Volt
3	WFR136008	Fuse Block	6	WFR121010	Lug Terminal 14-4 (Ground)	10	WFR322812	Rear Electric Mounting Plate ONLY
4	WFR150301	Screw 8-18 x 7/16 in	7	WFR120910	Screw 10-32 x 3/8 in			

# 240V REVERSING REAR PANEL ASSEMBLY

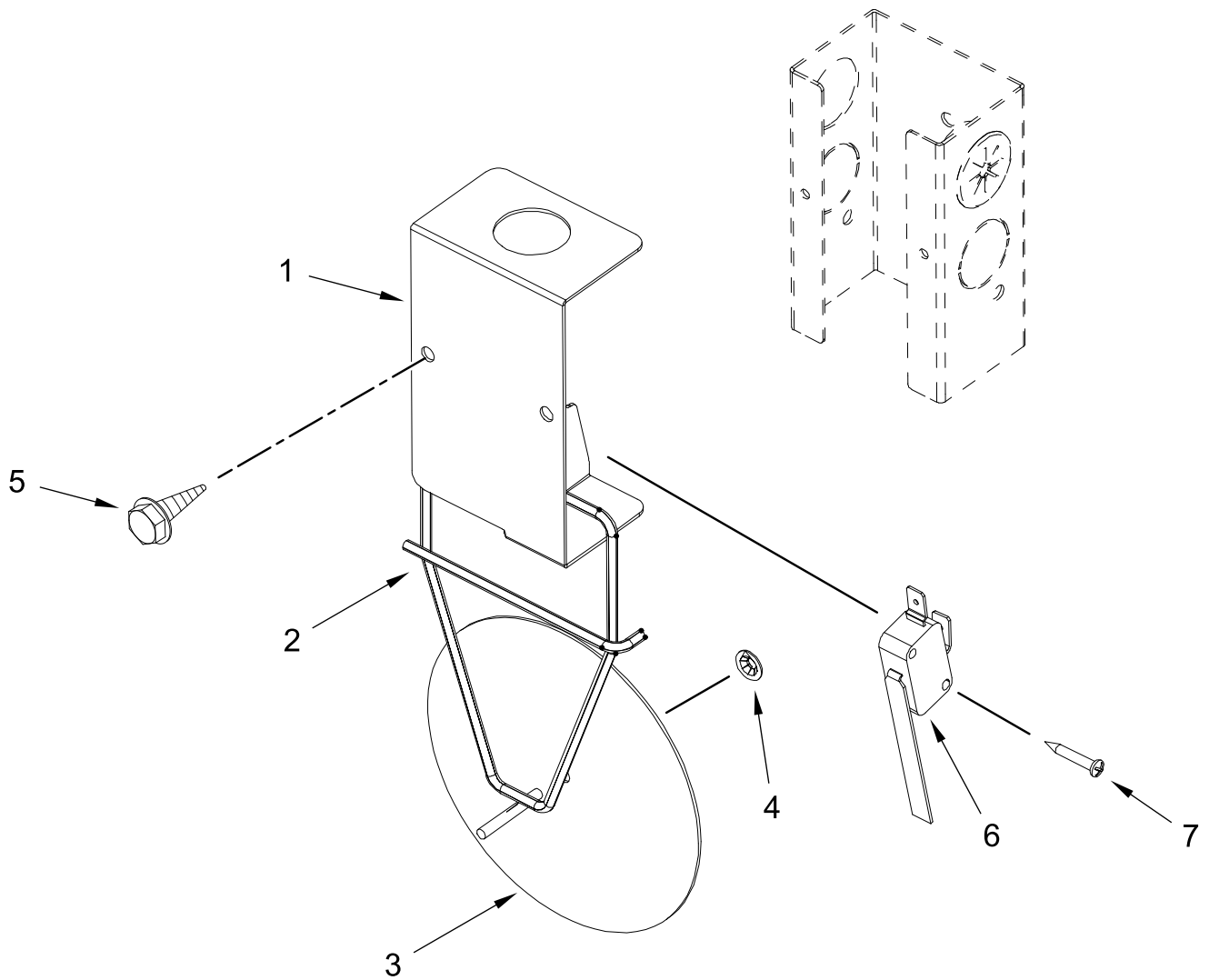




# 240V REVERSING REAR PANEL ASSEMBLY

<u>Illus.</u> <u>No.</u>	<u>Part No.</u>	<u>Description</u>	<u>Illus.</u> <u>No.</u>	<u>Part No.</u>	<u>Description</u>	<u>Illus.</u> <u>No.</u>	<u>Part No.</u>	<u>Description</u>
1	WFR120716	Terminal Block	7	WFR120910	Screw 10-32 x 3/8 in	10	WFR132109	Transformer – 24 vac Assembly (for 120V 60 Hz Models Only)
2	WFR150539	Screw 8 x 1 1/4 in	8	WFR132497	Contactor K-Line Reversing 24V 6A	11	WFR322812	Rear Electric Mounting Plate ONLY
3	WFR136008	Fuse Block	9	WFR131394	Contactor K-Line 24v 6A			
4	WFR150301	Screw 8-18 x 7/16 in						
5	WFR136050	Fuse 1 Amp (Slo-Blo)						
6	WFR121010	Lug Terminal 14-4 (Ground)						

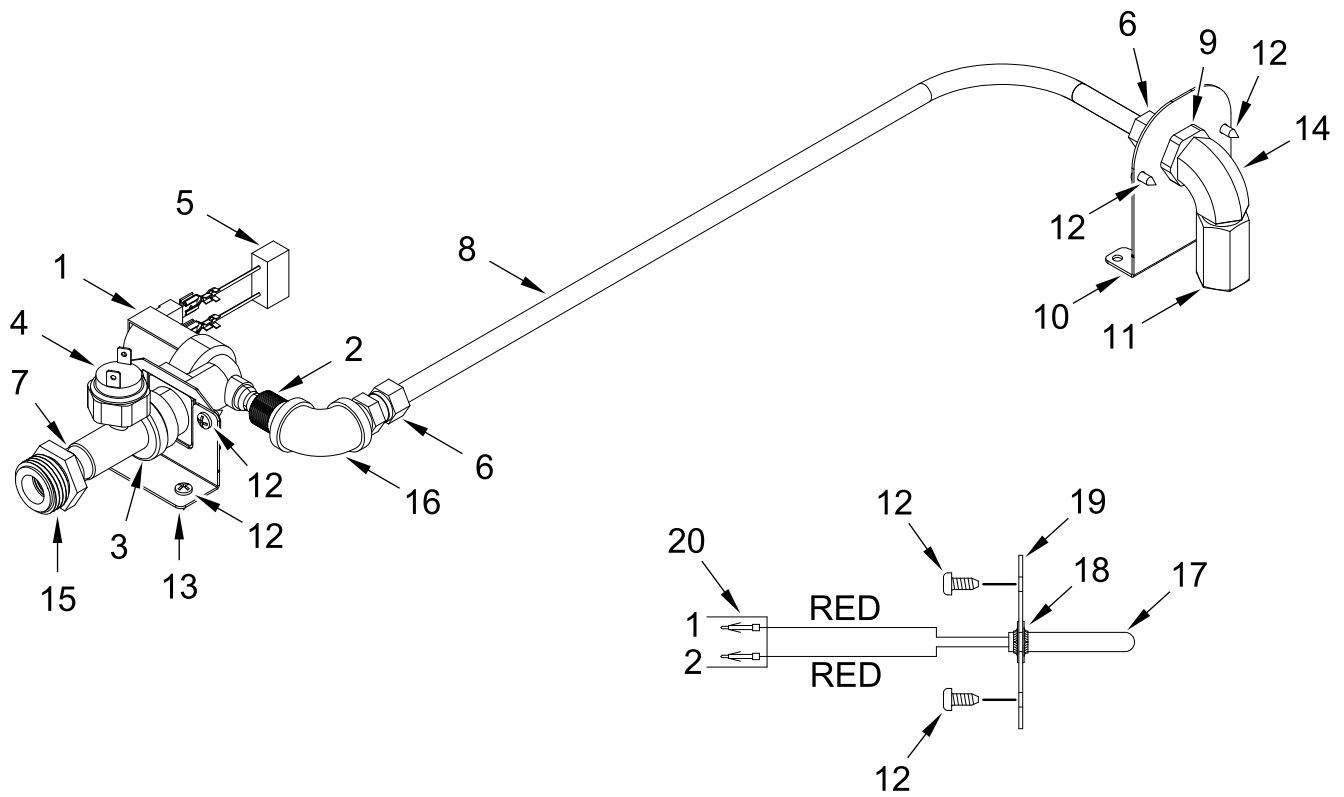
# SAIL SWITCH ASSEMBLY



# SAIL SWITCH ASSEMBLY

<u>Illus.</u> <u>No.</u>	<u>Part No.</u>	<u>Description</u>	<u>Illus.</u> <u>No.</u>	<u>Part No.</u>	<u>Description</u>	<u>Illus.</u> <u>No.</u>	<u>Part No.</u>	<u>Description</u>
1	WFR350283	Sail Switch Box Cover and Bracket ONLY	4	WFR154002	Push-On Fastener 1/8 in	6	WFR122200	Service Switch
2	WFR105500	Sail Switch Rod Assembly	5	WFR150309	Screw 10-16 x 1/2 in (Hex Head TEK CrimpTite®)	7	WFR150303	Screw #4 x 3/4 in
3	WFR319202	Sail Switch Damper						

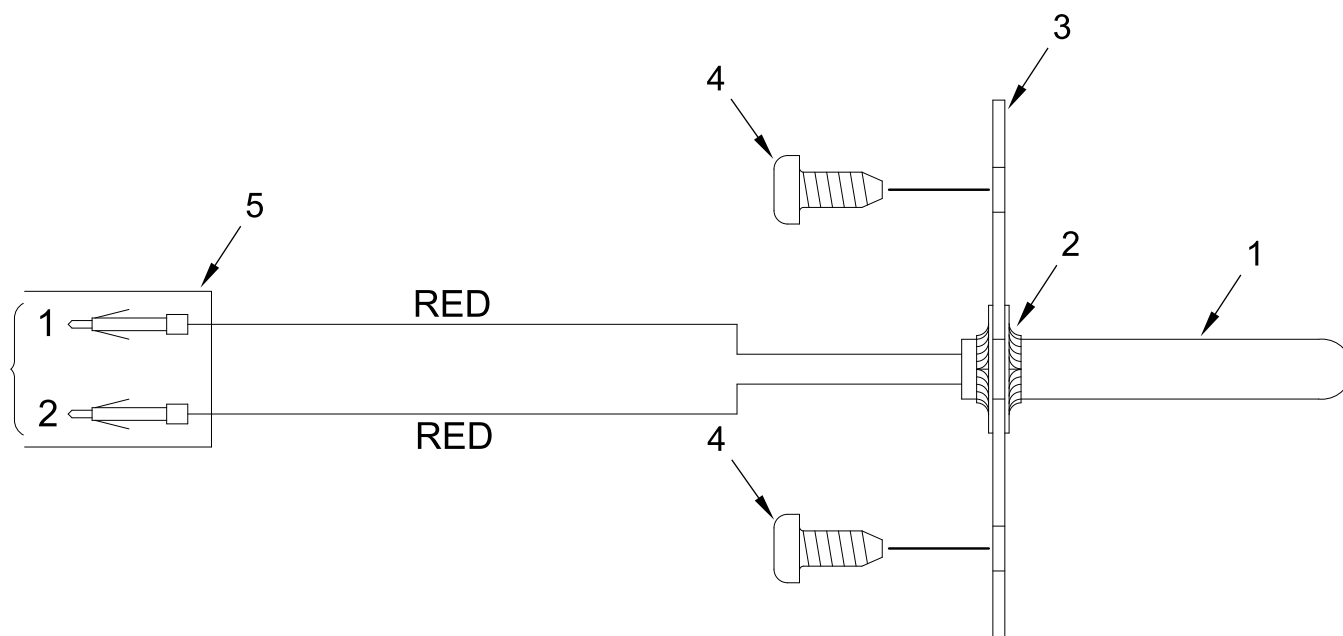
# S.A.F.E. SYETEM ASSEMBLY



# S.A.F.E. SYSTEM ASSEMBLY

<u>Illus.</u> <u>No.</u>	<u>Part No.</u>	<u>Description</u>	<u>Illus.</u> <u>No.</u>	<u>Part No.</u>	<u>Description</u>	<u>Illus.</u> <u>No.</u>	<u>Part No.</u>	<u>Description</u>
1	WFR165119	S. A. F. E. System H2O Valve 24VAC	11	WFR143581	S. A. F. E. System Spray Nozzle 3 GPM 3/8 in	17	WFR822752	S. A. F. E. System Temperature Probe Assembly
2	WFR143183	Brass Adaptor 7/16-20 x 3/8 in	12	WFR150301	Screw 8-18 x 7/16 in			(includes No(s) 17 through 20 and 12)
3	WFR143182	Brass Tee 3/4 x 1/8 x 3/8 in	13	WFR313962	Main Line Sensor Activated Fire Extinguishing System Valve Bracket 90°	18	WFR154007	Push On Fastener 1/4 in
4	WFR136987	Water Pressure Switch				19	WFR390390	Sensor Bracket ONLY
5	WFR824081	RC Network Assembly	14	WFR143155	Brass Elbow 3/8 in	20	WFR122647	Connector ONLY
6	WFR143208	Brass Connect 3/8 x 3/8 in	15	WFR143356	Nylon Adaptor 3/8 x 3/4 in			
7	WFR143241	Brass Nipple 3/8 in	16	WFR143310	Brass Elbow 90° 3/8 in			
8	WFR143099	Tube 3/8 in		WFR817574	S. A. F. E. System Assembly Complete			
9	WFR143303	Brass Lock Nut 3/8 in			(includes No(s) 1 through 16)			
10	WFR335351	S. A. F. E. System Sprinkler Head Mounting Plate						

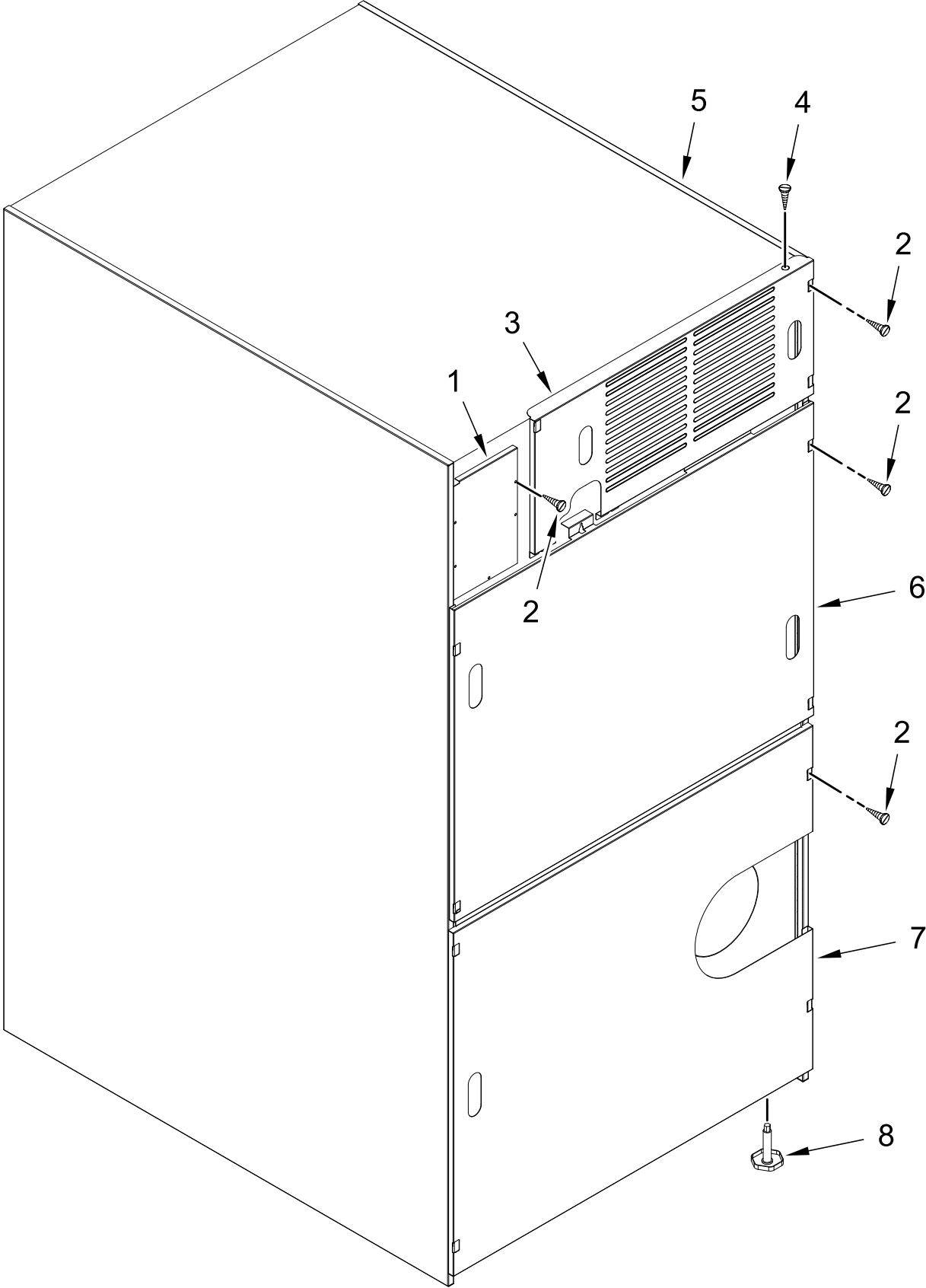
# S.A.F.E. TEMPERATURE PROBE ASSEMBLY



# S.A.F.E. TEMPERATURE PROBE ASSEMBLY

<u>Illus.</u> <u>No.</u>	<u>Part No.</u>	<u>Description</u>	<u>Illus.</u> <u>No.</u>	<u>Part No.</u>	<u>Description</u>	<u>Illus.</u> <u>No.</u>	<u>Part No.</u>	<u>Description</u>
1	WFR822752	S. A. F. E. System Temperature Probe Assembly  (includes No(s) 1 through 5)	2	WFR154007	Push On Fastener 1/4 in	4	WFR150301	Screw 8-18 x 7/16 in
			3	WFR390390	Sensor Bracket ONLY	5	WFR122647	Connector ONLY

# OUTER TOP / BACK GUARD ASSEMBLIES





# OUTER TOP / BACK GUARD ASSEMBLIES

<u>Illus.</u> <u>No.</u>	<u>Part No.</u>	<u>Description</u>	<u>Illus.</u> <u>No.</u>	<u>Part No.</u>	<u>Description</u>	<u>Illus.</u> <u>No.</u>	<u>Part No.</u>	<u>Description</u>
1	WFR322809	S. A. F. E. System Temperature Probe Assembly	4	WFR150300	Screw 10-16 x 1/2 in (Hex Washer TEK Crimptite®)	7	WFR314539	Bottom Back Guard
2	WFR150301	Screw 8-18 x 7/16 in	5	WFR312527	Outer Top	8	WFR103500	Adjustable Leveling Leg
3	WFR314534	Sensor Bracket ONLY	6	WFR314535	Middle Back Guard			