

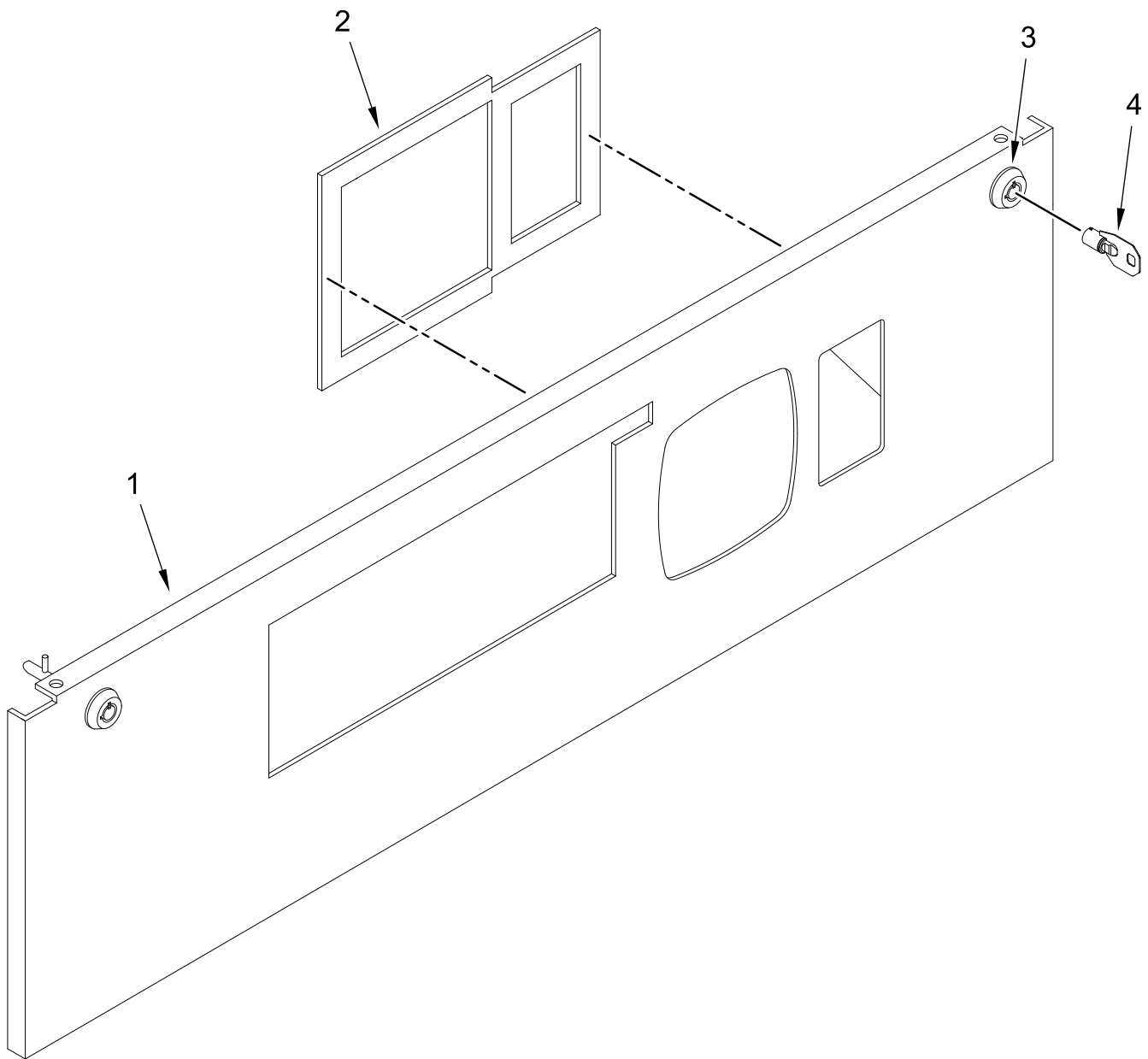


COMMERCIAL INDUSTRIAL GAS DRYER SERVICE PARTS LIST

MODELS:

MLG31PCC

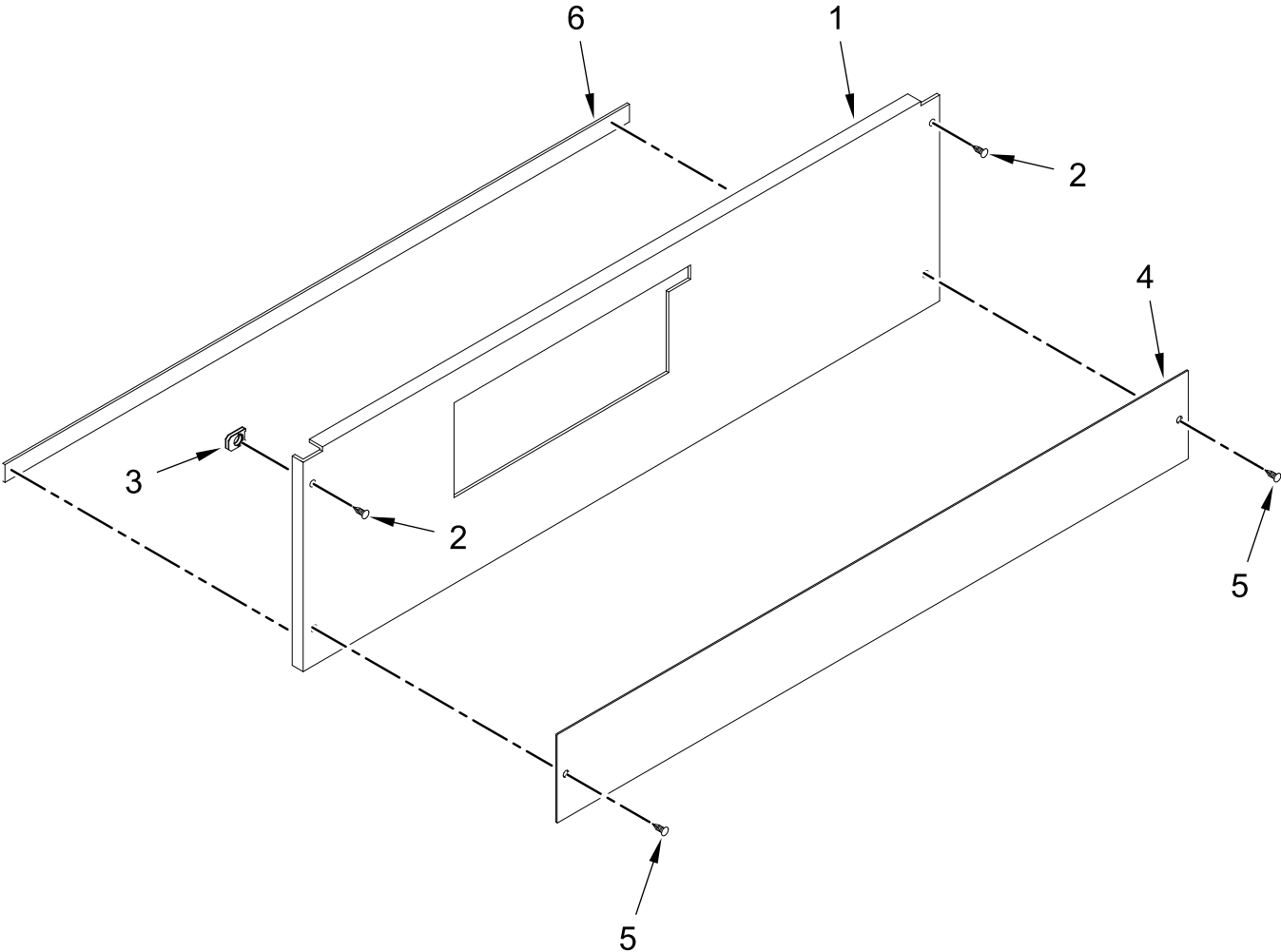
COIN CONTROL DOOR ASSEMBLY



COIN CONTROL DOOR ASSEMBLY

<u>Illus.</u> <u>No.</u>	<u>Part No.</u>	<u>Description</u>	<u>Illus.</u> <u>No.</u>	<u>Part No.</u>	<u>Description</u>
1	WFR883768	White Coin Control Door Assembly Less Locks (Includes No(s) 1 and 2)	2	WFR117603	Neoprene Gasket Tape (When Ordering Specify Length, sold by the inch) (sold by the inch)
	WFR883771	Stainless Steel Coin Control Door Assembly Less Locks (Includes No(s) 1 and 2)	3	WFR160040	Ace® Lock Assembly (no key)
			4	WFR160140	Key ONLY (key number XX4451)

LINT DOOR ASSEMBLY



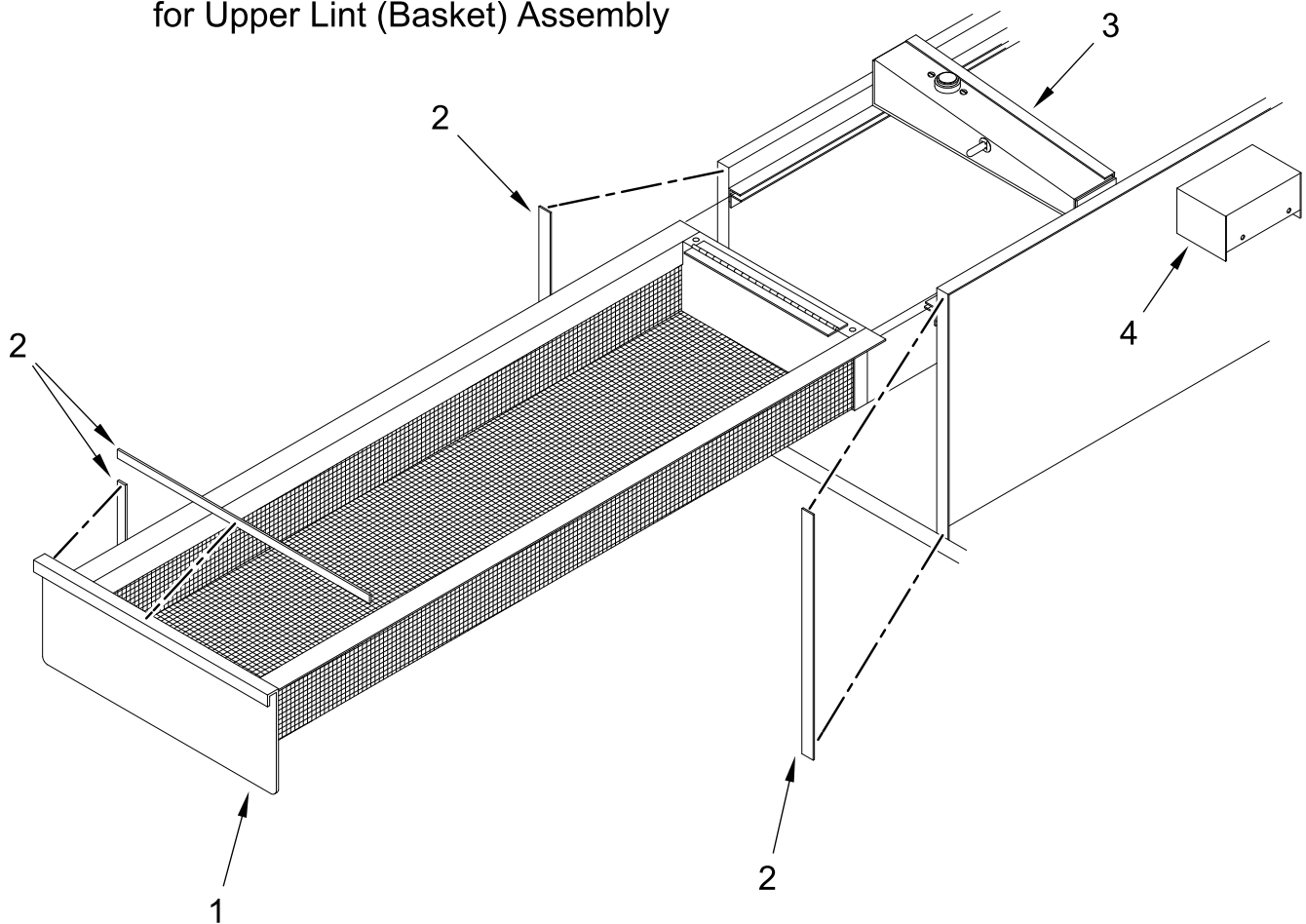
LINT DOOR ASSEMBLY

<u>Illus.</u> <u>No.</u>	<u>Part No.</u>	<u>Description</u>	<u>Illus.</u> <u>No.</u>	<u>Part No.</u>	<u>Description</u>
1	WFR883981	White Lint Door Assembly Complete Less Locks (Includes No(s) 1, 4 through 6)	3	WFR154011	U-Nut 10-32
			4	WFR883369	Black Trim
			5	WFR150319	Screw 10-32 x 1/2 in (Black)
	WFR824326	Stainless Lint Door Assembly Complete Less Locks (Includes No(s) 1 and 6) Order Black Trim Separately	6	WFR117604	Foam Tape (When Ordering Specify Length, sold by the inch)
2	WFR150314	Screw 10-32 x 1/2 in			

LINT DRAWER (BASKET) ASSEMBLY

LOWER LINT (BASKET) ASSEMBLY

Note: Duplicate All Components
for Upper Lint (Basket) Assembly

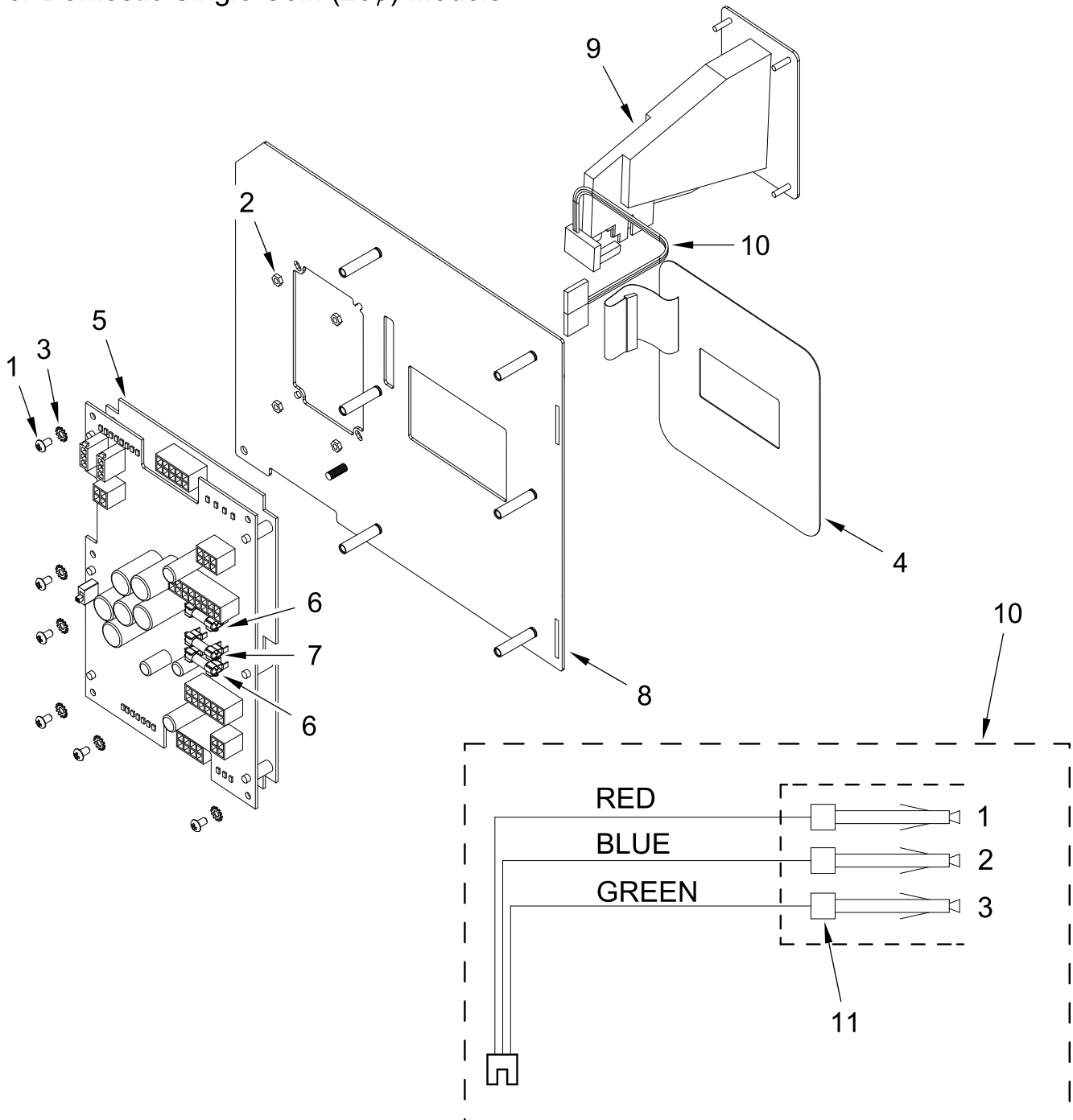


LINT DRAWER (BASKET) ASSEMBLY

<u>Illus.</u> <u>No.</u>	<u>Part No.</u>	<u>Description</u>	<u>Illus.</u> <u>No.</u>	<u>Part No.</u>	<u>Description</u>	<u>Illus.</u> <u>No.</u>	<u>Part No.</u>	<u>Description</u>
1	WFR883984	White Lint Drawer (Basket) Assembly Complete (Includes No. 1 and 2)	2	WFR117604	Foam Tape (When Ordering Specify Length, sold by the inch)	3		Temperature Sensor Bracket (refer to Temperature Sensor Probe Assembly page)
	WFR883982	Black Lint Drawer (Basket) Assembly Complete (Includes No. 1 and 2)				4		Lint Drawer (Basket) Switch (refer to Lint Drawer (Basket) Switch Assembly page)

DMC CONTROL PANEL ASSEMBLY

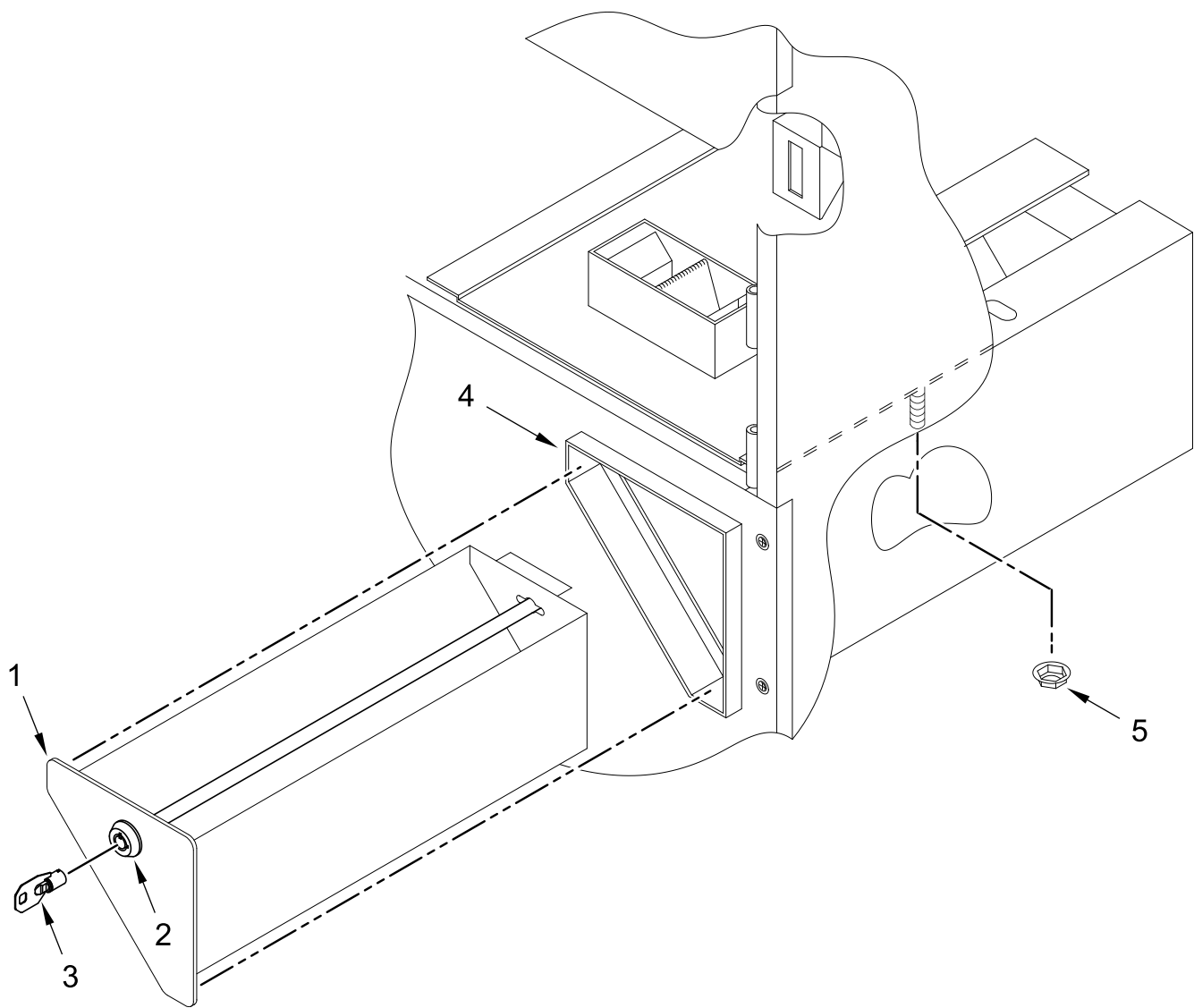
For Domestic Single Coin (25¢) Models



DMC CONTROL PANEL ASSEMBLY

<u>Illus.</u> <u>No.</u>	<u>Part No.</u>	<u>Description</u>	<u>Illus.</u> <u>No.</u>	<u>Part No.</u>	<u>Description</u>	<u>Illus.</u> <u>No.</u>	<u>Part No.</u>	<u>Description</u>
1	WFR150005	Screw 6-32 x 1/4 in	8	WFR828206	Phase 7 Coin Meter Panel	11	WFR122691	Female Terminal
2	WFR152102	Nut M3					WFR122633	3 Pin Connector
3	WFR153010	Lock Washer #6	9	WFR852317	Coin Acceptor with Optic Switch			
4	WFR112583	Phase 7 Coin DMC Keypad			(Includes No. 9 and 10)			
5	WFR137260	Phase 7 Dual Coin Board	10	WFR883774	Hanke Optical Switch Assembly with Connector			
6	WFR136111	Fuse 5 Amp (Slo-Blo)						
7	WFR136115	Fuse 3/4 Amp (Slo-Blo)			(Includes No. 10 and 11)			

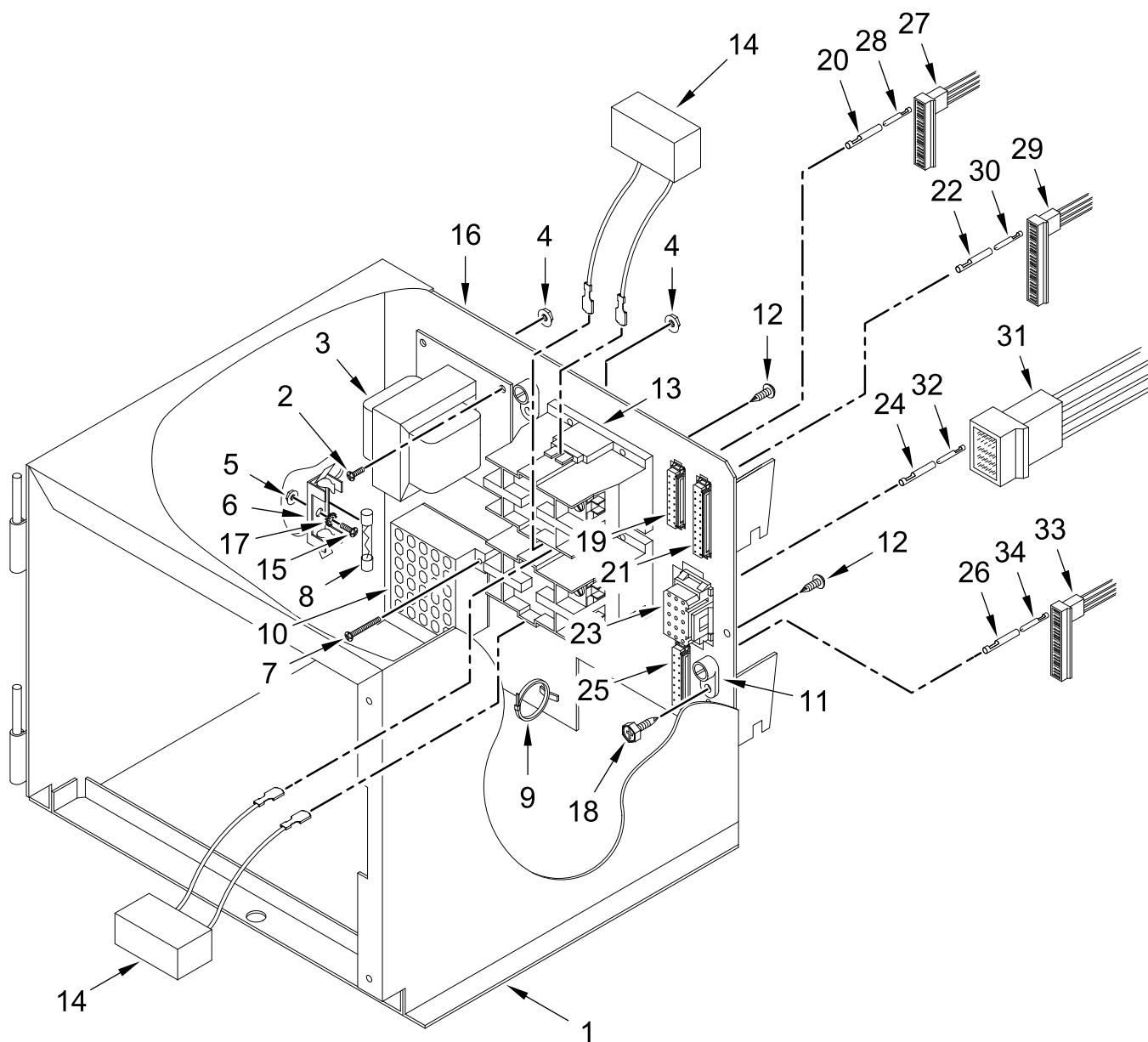
COIN VAULT ASSEMBLY



COIN VAULT ASSEMBLY

<u>Illus.</u> <u>No.</u>	<u>Part No.</u>	<u>Description</u>	<u>Illus.</u> <u>No.</u>	<u>Part No.</u>	<u>Description</u>	<u>Illus.</u> <u>No.</u>	<u>Part No.</u>	<u>Description</u>
1	WFR883347	Black Faceplate Coin Box Assembly Less Lock	2	WFR160036	ACE® Lock Assembly with Key (Specify key number when ordering)	4	WFR883382	Coin Vault Assembly ONLY
	WFR883348	Black Coin Box Faceplate ONLY	3	WFR160136	ACE® Key ONLY (Specify key number when ordering)	5	WFR152014	Serrated Hex Flange Nut 1/4-20

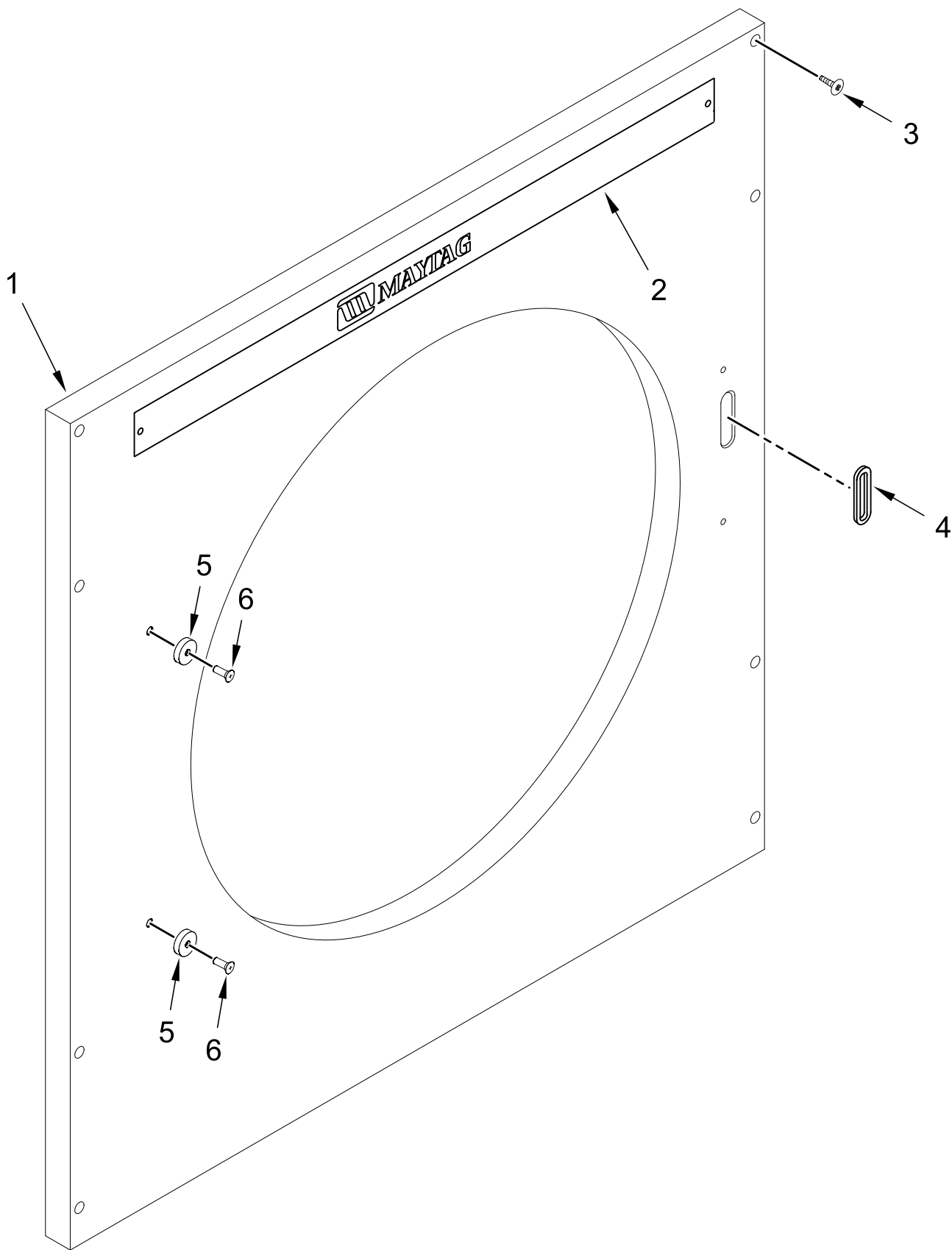
DMC CONTROL BOX ASSEMBLY



DMC CONTROL BOX ASSEMBLY

<u>Illus.</u> <u>No.</u>	<u>Part No.</u>	<u>Description</u>	<u>Illus.</u> <u>No.</u>	<u>Part No.</u>	<u>Description</u>	<u>Illus.</u> <u>No.</u>	<u>Part No.</u>	<u>Description</u>
1	WFR828202	Control Box Assembly Complete (Includes No(s) 1 through 26)	13	WFR132498	DP Contactor 24V 2-Pole	28	WFR122669	Female Crimp Socket (for No. 27)
	WFR828201	Control Box ONLY	14	WFR824828	R.C. Network with Connectors	29	WFR122668	20 Pin Connector
2	WFR150108	Screw 8-32 x 1/2 in	15	WFR150001	Screw 6-32 x 1/2 in	30	WFR122669	Female Crimp Socket (for No. 29)
3	WFR132109	Transformer – 24 vac Assembly (for 120V 60 Hz Models Only)	16	WFR315023	Phase 7 Coin E-Box Back	31	WFR122625	15 Pin Connector
4	WFR153073	Nut 8-32	17	WFR153010	Lock Washer #6	32	WFR122704	Male Crimp Pin (for No. 31)
5	WFR151000	Nut 6-32	18	WFR120910	Screw 10-32 x 3/8 in	33	WFR122686	14 Pin Connector
6	WFR136008	Fuse Block	19	WFR122689	16 Pin Connector	34	WFR122669	Female Crimp Socket (for No. 33)
7	WFR150103	Screw 8-32 x 3/4 in	20	WFR182363	Male Crimp Pin (for No. 19)			OPTIONAL PARTS (NOT ILLUSTRATED)
8	WFR136049	Fuse 3/4 Amp (Slo-Blo) (for 120V 60 Hz Models Only)	21	WFR122687	20 Pin Connector			
9	WFR121494	Push Mount Wire Tie	22	WFR182363	Male Crimp Pin (for No. 21)	WFR122672		Pin / Socket Extraction Tool (Not Illustrated)
10	WFR120715	30 Position Terminal Block	23	WFR122626	15 Pin Connector			
11	WFR121010	Lug Terminal 14-4 (Ground)	24	WFR122705	Female Crimp Socket (for No. 23)			
12	WFR150309	Screw 10-16 x 1/2 in (Hex Head TEK Crimptite®)	25	WFR122685	14 Pin Connector			
			26	WFR182363	Male Crimp Pin (for No. 25)			
			27	WFR122667	16 Pin Connector			

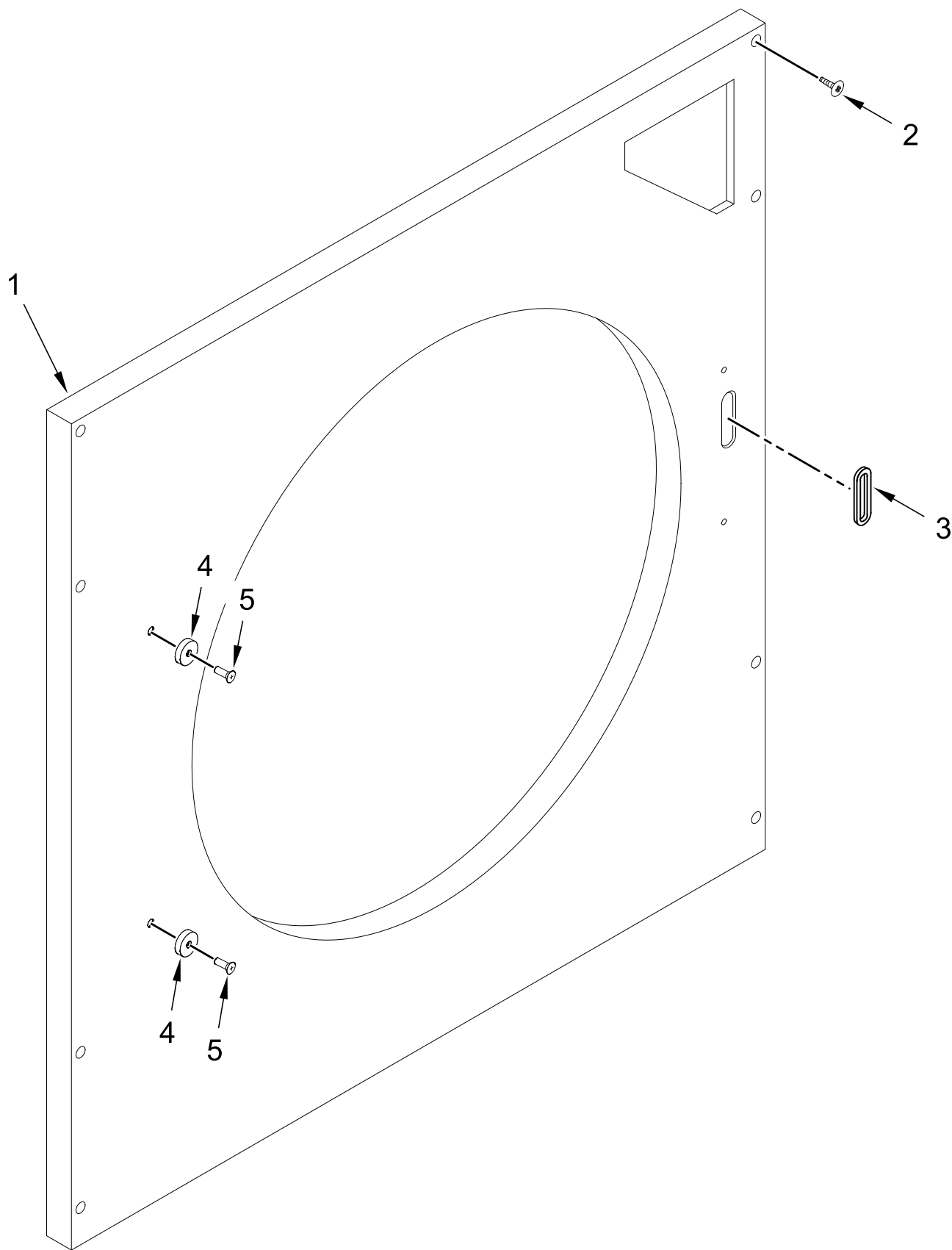
UPPER FRONT PANEL ASSEMBLY



UPPER FRONT PANEL ASSEMBLY

<u>Illus.</u> <u>No.</u>	<u>Part No.</u>	<u>Description</u>	<u>Illus.</u> <u>No.</u>	<u>Part No.</u>	<u>Description</u>
1	WFR825632	White Front Panel with Magnetic Door Latch (includes No(s) 1 through 6) (Specify color when ordering)	3	WFR150313	Screw 10-16 x 1/2 in (TORX®)
	WFR825628	Stainless Front Panel with Magnetic Door Latch (includes No(s) 1 through 6)	4	WFR121405	Rubber Grommet
			5	WFR102004	Round Door Magnet 3/4 in
2	WFR801095	Maytag Logo with Black Trim	6	WFR152223	Screw 10-32 x 1/2 in (TORX®)

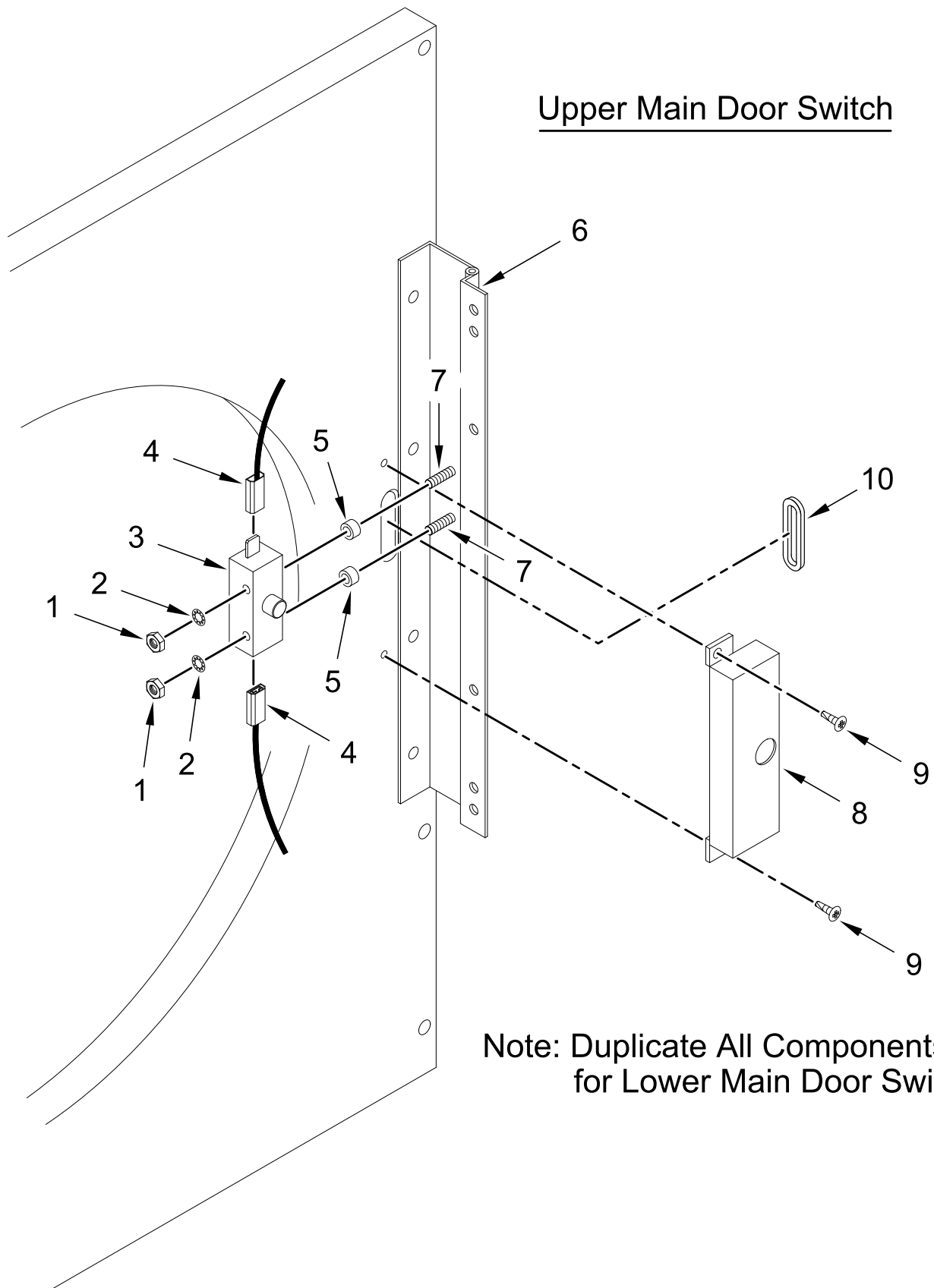
LOWER FRONT PANEL ASSEMBLY



LOWER FRONT PANEL ASSEMBLY

<u>Illus.</u> <u>No.</u>	<u>Part No.</u>	<u>Description</u>	<u>Illus.</u> <u>No.</u>	<u>Part No.</u>	<u>Description</u>
1	WFR825630	White Front Panel with Magnetic Door Latch (includes No(s) 1 through 5) (Specify color when ordering)	2	WFR150313	Screw 10-16 x 1/2 in (TORX®)
			3	WFR121405	Rubber Grommet
			4	WFR102004	Round Door Magnet 3/4 in
			5	WFR152223	Screw 10-32 x 1/2 in (TORX®)
	WFR825626	Stainless Front Panel with Magnetic Door Latch (includes No(s) 1 through 5)			

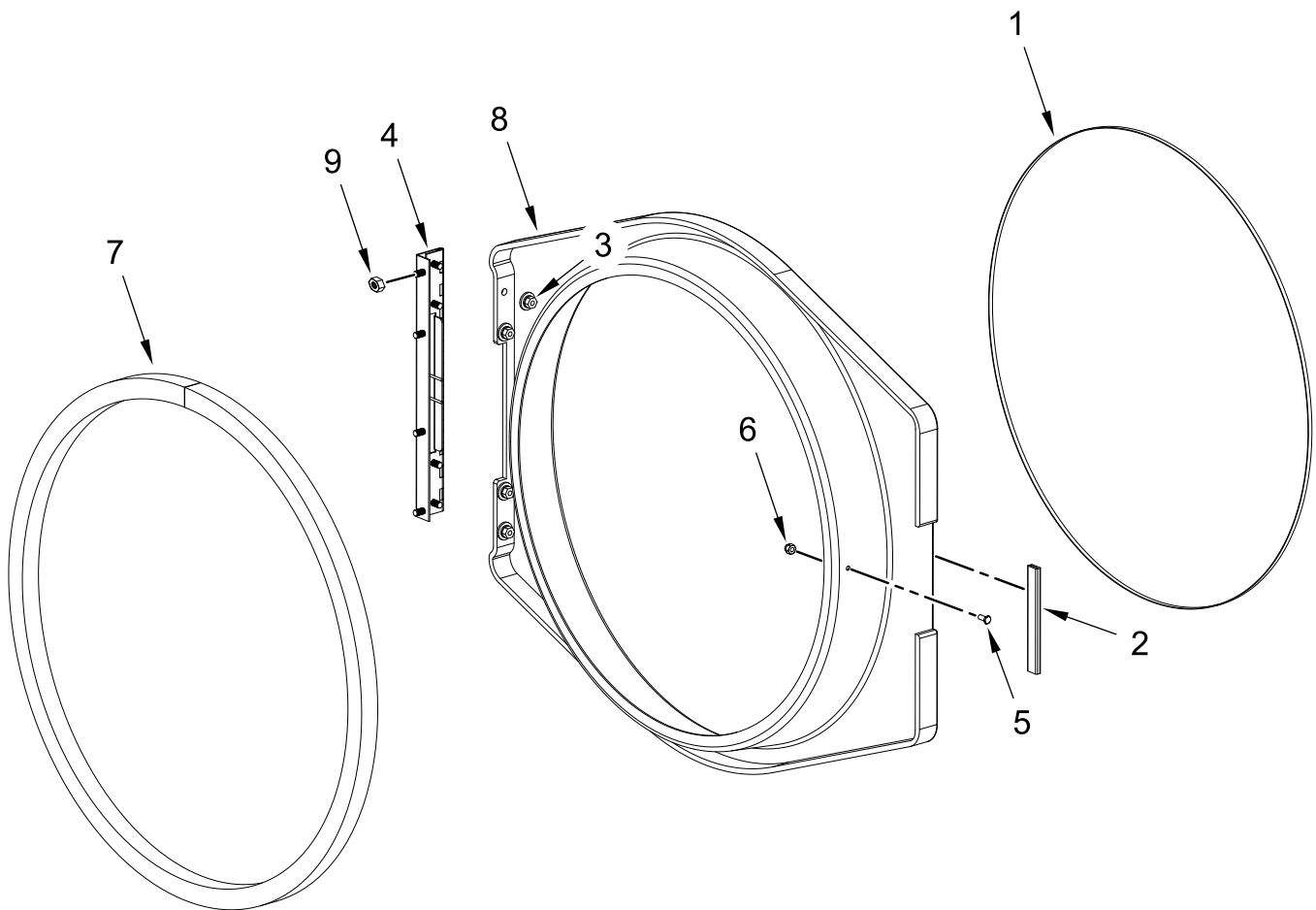
MAIN DOOR SWITCH ASSEMBLY



MAIN DOOR SWITCH ASSEMBLY

<u>Illus.</u> <u>No.</u>	<u>Part No.</u>	<u>Description</u>	<u>Illus.</u> <u>No.</u>	<u>Part No.</u>	<u>Description</u>	<u>Illus.</u> <u>No.</u>	<u>Part No.</u>	<u>Description</u>
1	WFR152013	Nut 6-32	5	WFR154281	Standard Nylon Spacer 3/8 in	8	WFR313218	Main Door Switch Housing ONLY
2	WFR153010	Lock Washer #6				9	WFR150201	Screw 10-32 x 1/4 in
3	WFR137005	Switch, Single Pole Door	6	WFR801524	Main Door Hinge Assembly	10	WFR121405	Rubber Grommet
4	WFR121028	Insulated Female Terminal	7	WFR153565	Self Clinching Stud 6-32 x 1 in			

MAIN DOOR ASSEMBLY

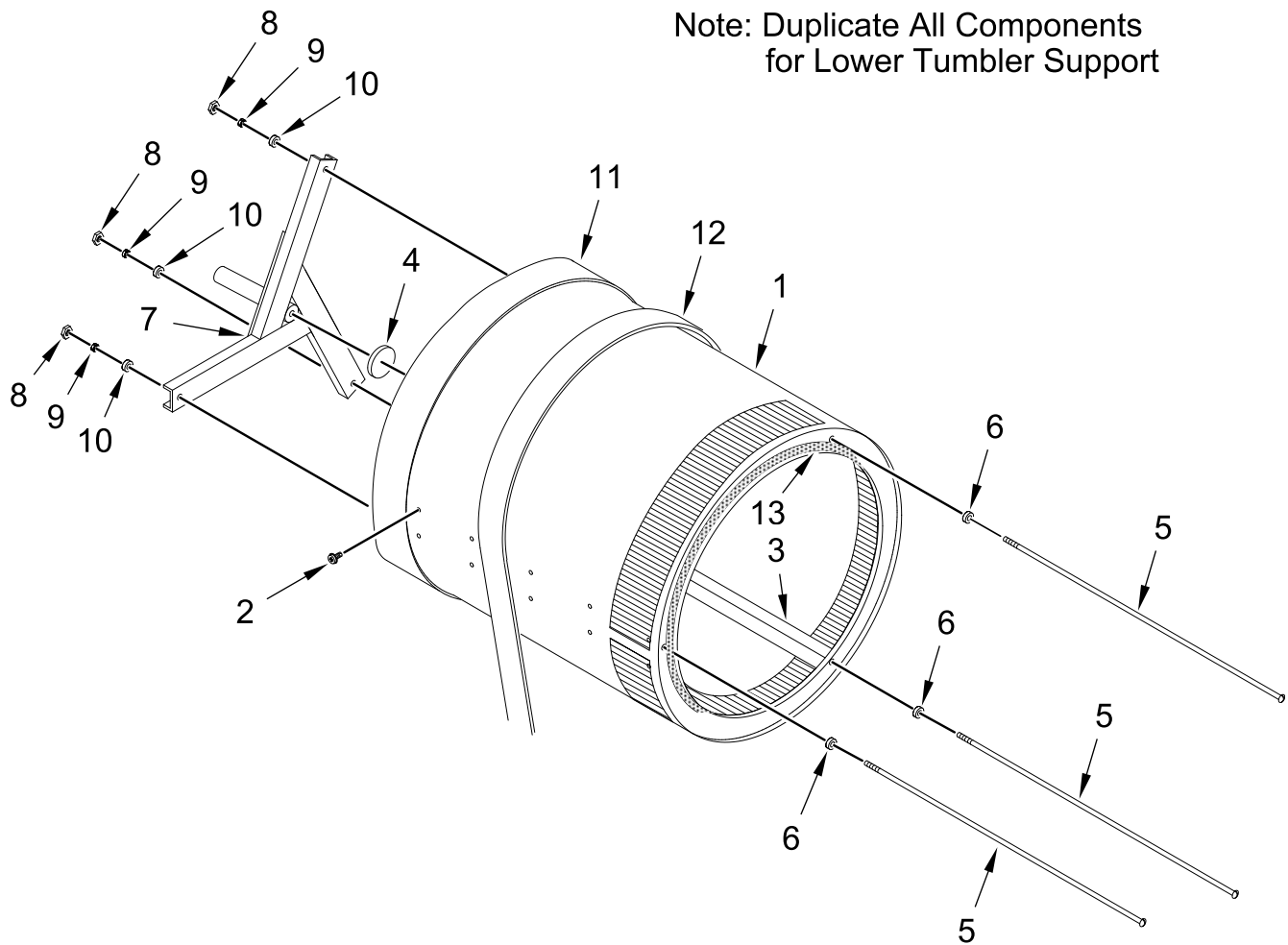


MAIN DOOR ASSEMBLY

<u>Illus.</u> <u>No.</u>	<u>Part No.</u>	<u>Description</u>	<u>Illus.</u> <u>No.</u>	<u>Part No.</u>	<u>Description</u>	<u>Illus.</u> <u>No.</u>	<u>Part No.</u>	<u>Description</u>
1	WFR102210	Door Glass	5	WFR150120	Screw 10-32 x 7/16 in	8	WFR882991	Black Main Door Assembly with Hinge Assembly
2	WFR102328	Handle Edge	6	WFR151010	Nut 10-32 (Black)			(includes No(s) 1 through 8)
3	WFR152014	Serrated Hex Flange Nut 1/4-20	7	WFR102349	Door Gasket	9	WFR152014	Serrated Hex Flange Nut 1/4-20
4	WFR801524	Main Door Hinge Assembly						

TUMBLER / SUPPORT ASSEMBLIES

UPPER TUMBLER SUPPORT

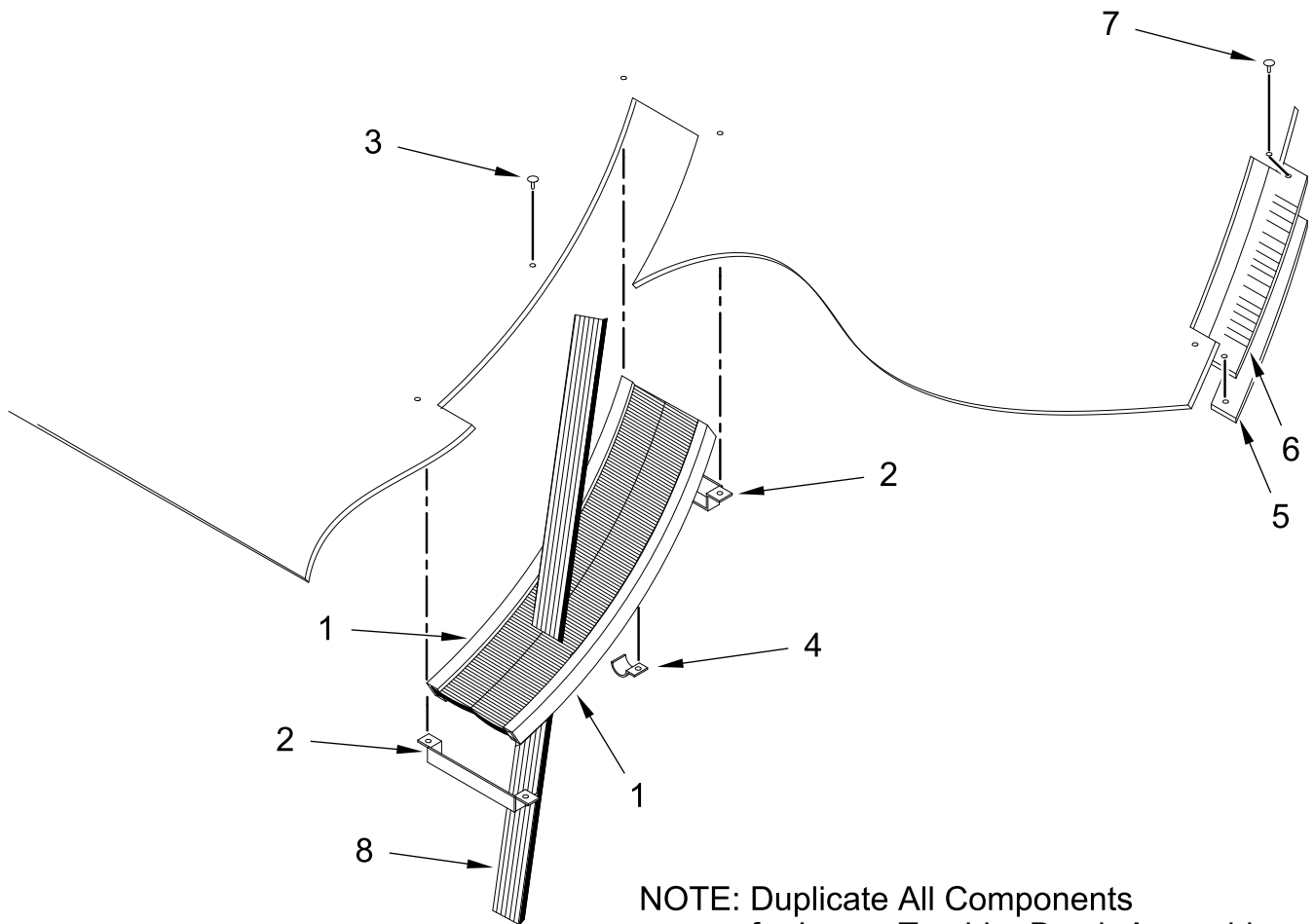


TUMBLER / SUPPORT ASSEMBLIES

<u>Illus.</u> <u>No.</u>	<u>Part No.</u>	<u>Description</u>	<u>Illus.</u> <u>No.</u>	<u>Part No.</u>	<u>Description</u>	<u>Illus.</u> <u>No.</u>	<u>Part No.</u>	<u>Description</u>
1	WFR815037	Tumbler and Support Assembly Complete with Felt Collar (includes No(s) 1 through 11 and 13)	4	WFR115986	Felt Tumbler Pad	11	WFR116003	Felt Collar
			5	WFR100915	Tie Rod 3/8 -16 x 31 1/8 in		WFR401010	Adhesive for Felt Collar (5 oz. tube)
2	WFR150313	Screw 10-16 x 1/2 in (TORX®)	6	WFR153004	Washer 3/8 x 1 in	12	WFR100173	Belt 12-Rib 95 in
3	WFR301315	Galvanized Short Tumbler Rib	7	WFR850066	Tumbler Support ONLY	13	WFR115992	Felt Collar
	WFR301316	Galvanized Tall Tumbler Rib	8	WFR152027	Lock Nut 3/8-16		WFR401010	Adhesive for Felt Collar (5 oz. tube)
			9	WFR153005	Split Lock Washer 3/8 in			
			10	WFR153004	Washer 3/8 x 1 in			

TUMBLER BRUSH ASSEMBLY

UPPER TUMBLER BRUSH

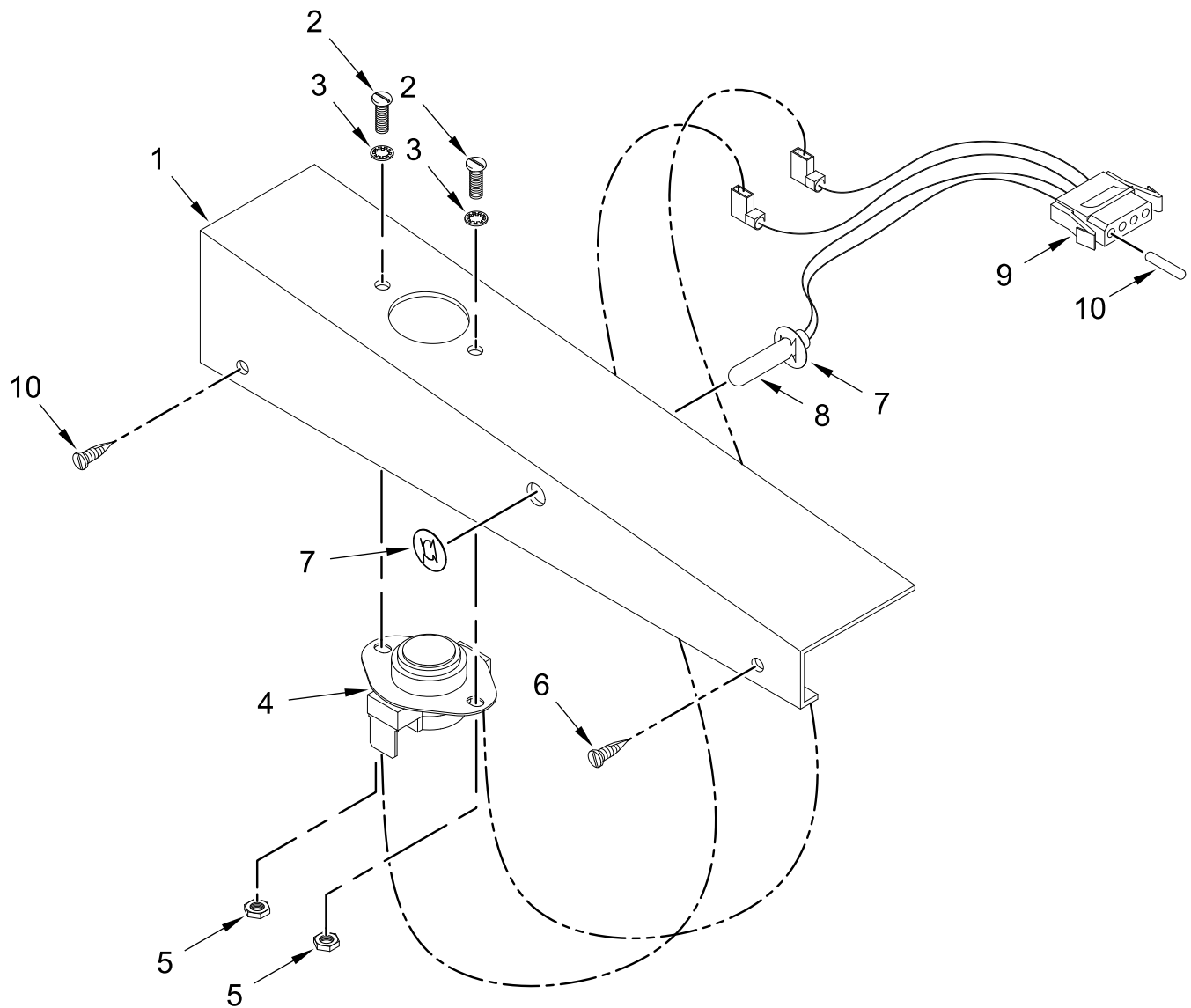


NOTE: Duplicate All Components
for Lower Tumbler Brush Assembly

TUMBLER BRUSH ASSEMBLY

<u>Illus.</u> <u>No.</u>	<u>Part No.</u>	<u>Description</u>	<u>Illus.</u> <u>No.</u>	<u>Part No.</u>	<u>Description</u>	<u>Illus.</u> <u>No.</u>	<u>Part No.</u>	<u>Description</u>
1	WFR170198	Drive Belt Sealing Brush	3	WFR154210	Rivet 5/32 x 3/16 in	6	WFR102325	Channel Gasket
2	WFR317656	Sealing Brush End Bracket	4	WFR120117	Clip 3/8 in	7	WFR154210	Rivet 5/32 x 3/16 in
			5	WFR317651	Wrapper Gasket Strip	8	WFR100173	Belt 12-Rib 95 in

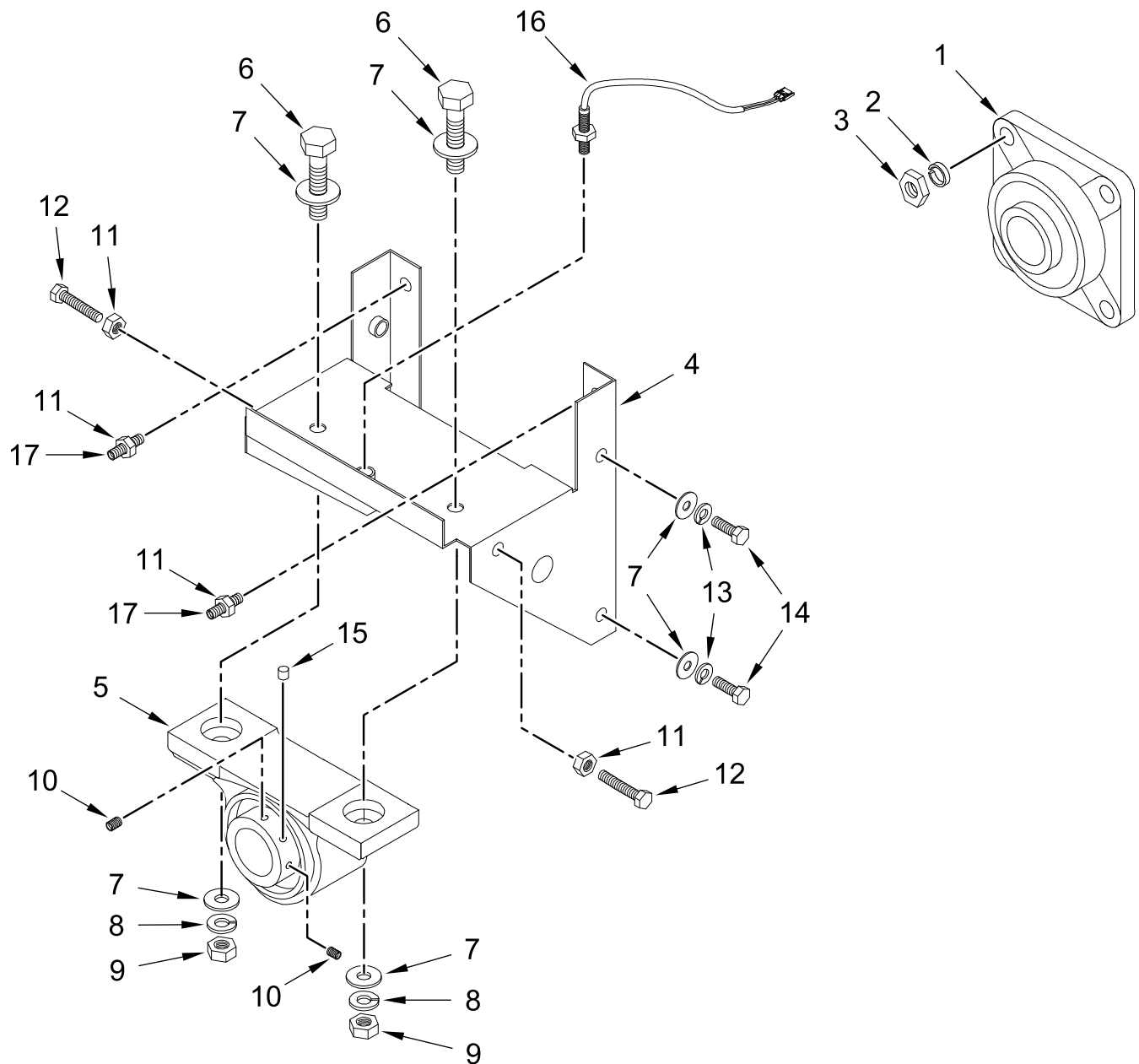
TEMPERATURE SENSOR PROBE ASSEMBLY



TEMPERATURE SENSOR PROBE ASSEMBLY

<u>Illus.</u> <u>No.</u>	<u>Part No.</u>	<u>Description</u>	<u>Illus.</u> <u>No.</u>	<u>Part No.</u>	<u>Description</u>	<u>Illus.</u> <u>No.</u>	<u>Part No.</u>	<u>Description</u>
1	WFR852324	Temperature Sensor Bracket Assembly Complete (includes No(s) 1 through 10)	5	WFR152000	Nut 6-32	9	WFR122605	4 Pin Connector
2	WFR150005	Screw 6-32 x 1/4 in	6	WFR150301	Screw 8-18 x 7/16 in	10	WFR122701	Female Crimp Socket
3	WFR153010	Lock Washer #6	7	WFR154007	Push On Fastener 1/4 in			(for No. 9)
4	WFR130106	Large Thermostat 170°	8	WFR852321	Temperature Sensor Probe Assembly (includes No(s) 8 through 10)			OPTIONAL PARTS (NOT ILLUSTRATED)
							WFR122801	Pin / Socket Extraction Tool (Not Illustrated)

TUMBLER BEARING ASSEMBLY



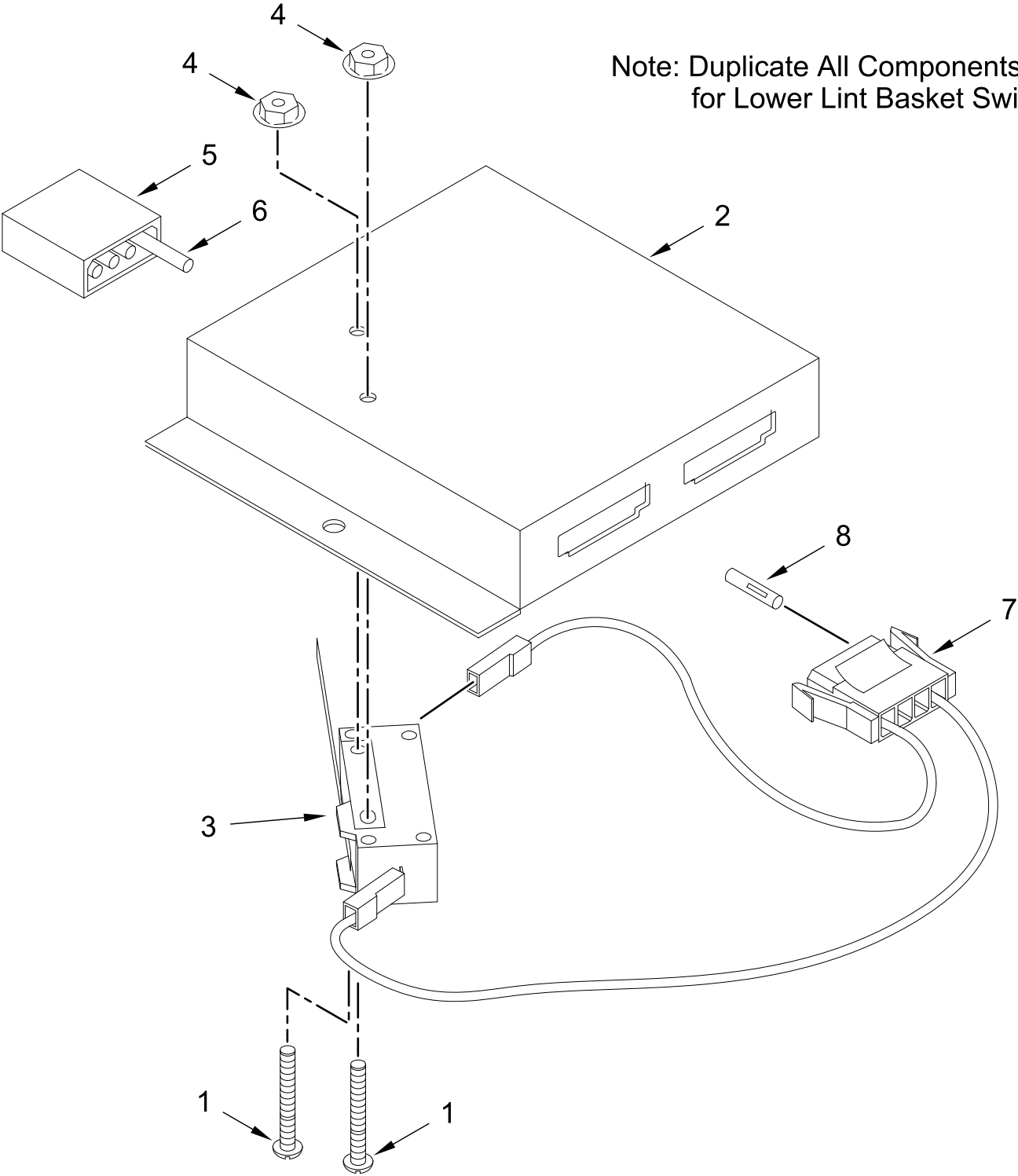
TUMBLER BEARING ASSEMBLY

<u>Illus.</u> <u>No.</u>	<u>Part No.</u>	<u>Description</u>	<u>Illus.</u> <u>No.</u>	<u>Part No.</u>	<u>Description</u>	<u>Illus.</u> <u>No.</u>	<u>Part No.</u>	<u>Description</u>
1	WFR880203	Flange Bearing 1 3/8 in	6	WFR150601	Bolt 3/8 x 2 in	14	WFR150501	Tap Bolt 5/16-18 x 3/4 in
2	WFR153005	Split Lock Washer 3/8 in	7	WFR153004	Washer 3/8 x 1 in	15	WFR170608	Sintered 8 Magnet
3	WFR152005	Nut 3/8-16	8	WFR153005	Split Lock Washer 3/8 in	16	WFR822735	Rotational Sensor Assembly
4	WFR883387	Bearing Assembly Complete	9	WFR152005	Nut 3/8-16	17	WFR150610	Set Screw 5/16-18 x 1 1/2 in
		(includes No(s) 4 through 17)	10	WFR154384	Set Screw 5/16-24 x 5/16 in (Black)			
	WFR882543	Bearing Support ONLY	11	WFR152004	Nut 5/16-18			
5	WFR880779	Pillow Block Bearing 1 3/8 in	12	WFR150621	Tap Bolt 5/16-18 x 1 1/2 in			
			13	WFR153002	Split Lock Washer 5/16 in			

LINT DRAWER (BASKET) SWITCH ASSEMBLY

UPPER LINT BASKET SWITCH

Note: Duplicate All Components
for Lower Lint Basket Switch



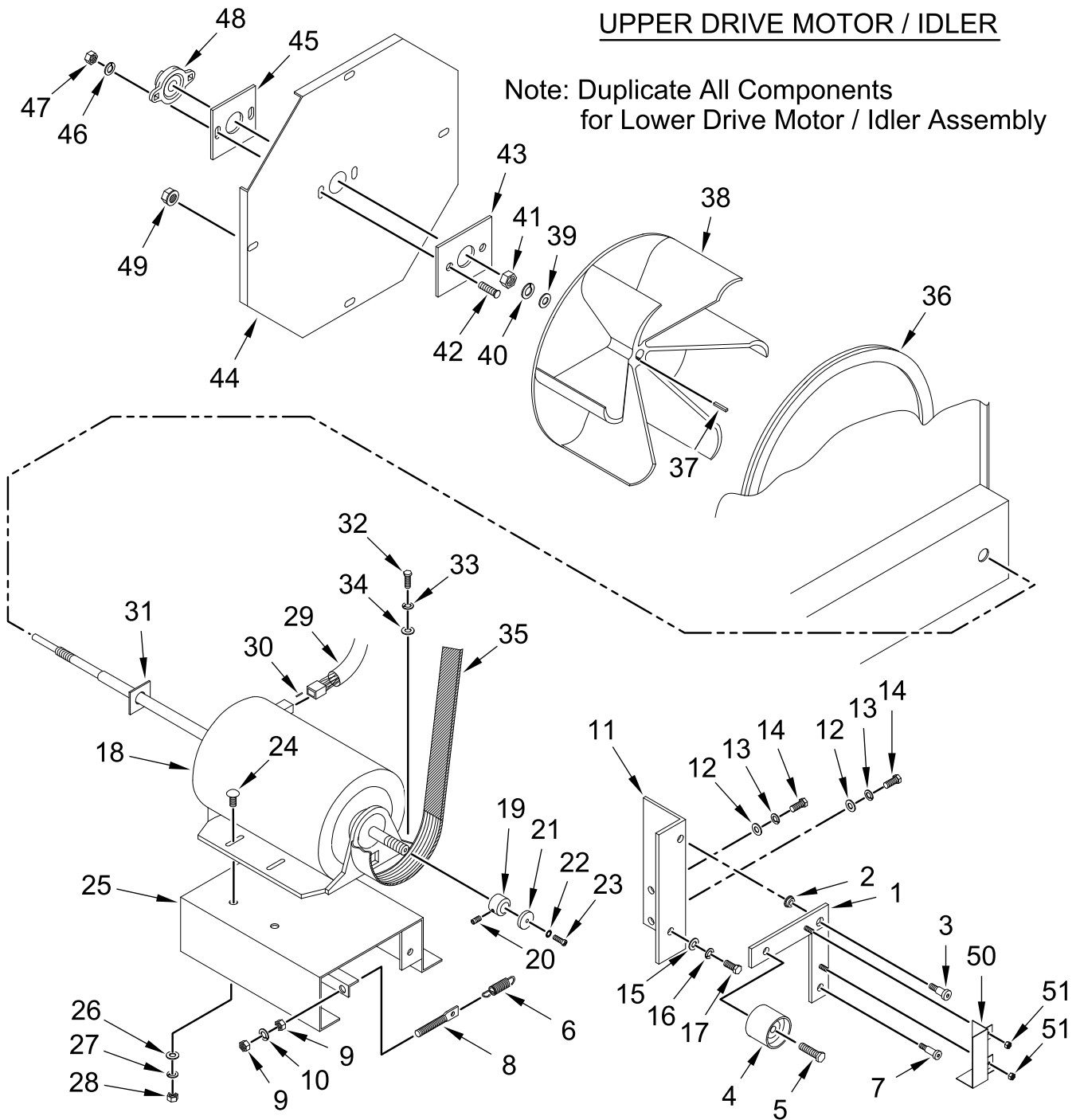
LINT DRAWER (BASKET) SWITCH ASSEMBLY

<u>Illus.</u> <u>No.</u>	<u>Part No.</u>	<u>Description</u>	<u>Illus.</u> <u>No.</u>	<u>Part No.</u>	<u>Description</u>	<u>Illus.</u> <u>No.</u>	<u>Part No.</u>	<u>Description</u>
1	WFR150006	Screw 6-32 x 7/8 in	4	WFR152013	Nut 6-32	8	WFR122701	Female Crimp Socket
2	WFR304039	Lint Switch Mounting Bracket ONLY	5	WFR122604	4 Pin Connector			(for No. 7)
3	WFR136992	Lint Drawer Safety Switch ONLY	6	WFR122700	Male Crimp Pin (for No. 5)			OPTIONAL PARTS (NOT ILLUSTRATED)
			7	WFR122605	4 Pin Connector		WFR122801	Pin / Socket Extraction Tool (Not Illustrated)

ENCLOSED, NON-VENT MOTOR / IDLER ASM

UPPER DRIVE MOTOR / IDLER

Note: Duplicate All Components
for Lower Drive Motor / Idler Assembly



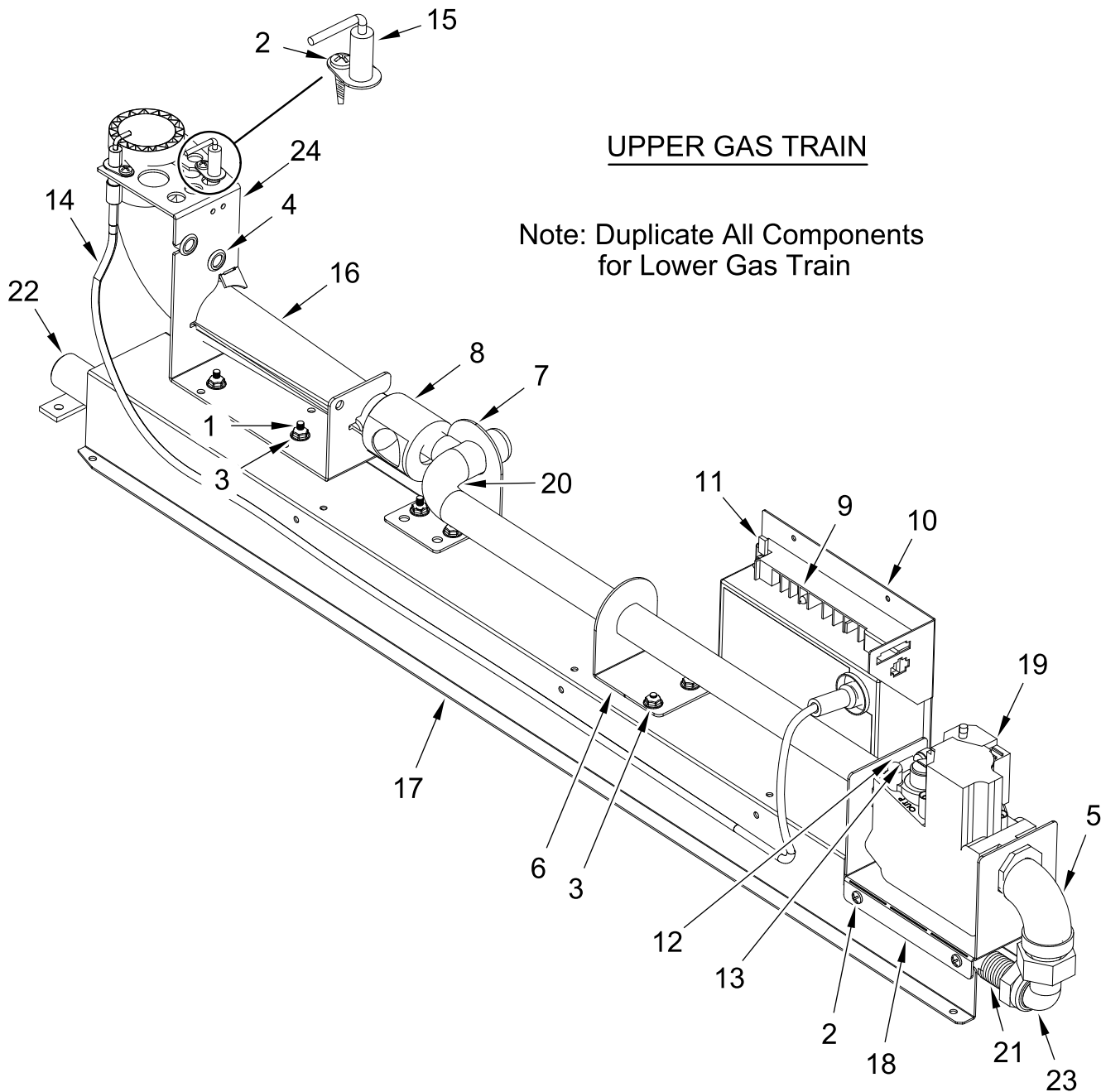
ENCLOSED, NON-VENT MOTOR / IDLER ASM

<u>Illus.</u> <u>No.</u>	<u>Part No.</u>	<u>Description</u>	<u>Illus.</u> <u>No.</u>	<u>Part No.</u>	<u>Description</u>	<u>Illus.</u> <u>No.</u>	<u>Part No.</u>	<u>Description</u>
1	WFR882910	Upper and Lower Idler Arm ONLY	18	WFR100064	Non-Vent Motor with Plug 1/3 hp 120/230v 1ø 60 Hz ONLY	33	WFR153002	Split Lock Washer 5/16 in
	WFR801019	Upper and Lower Idler Arm Assembly with Hardware (includes No(s) 1 through 10)		WFR803918	Non-Vent Motor with Plug 1/3 hp 120/230v 1ø 60 Hz (Complete) (includes No(s) 11 through 28 and 31)	34	WFR153001	Washer 5/16 in
2	WFR121350	Flanged Bushing 13/32 x 3/8 in ID	19	WFR101093	Rear Motor Shaft Bushing (for 60 Hz models)	35	WFR100173	Belt 12-Rib 95 in
3	WFR154266	Shoulder Bolt 5/16-18 x 3/8 in	20	WFR154327	Set Screw 1/4-20 x 3/8 in	36	WFR117604	Foam Tape (When Ordering Specify Length, sold by the inch)
4	WFR100250	Back Side Idler Assembly	21	WFR101094	Front Motor Shaft Bushing (for 60 Hz models)	37	WFR100705	Key 3/16 x 3/16 x 1 3/8 in
5	WFR150600	Bolt 3/8-16 x 1 1/2 in	22	WFR153024	Split Lock Washer #10	38	WFR802831	Impellor 12 1/2 in
6	WFR157010	Extension Spring 1 7/8 in	23	WFR150216	Screw 10-32 x 3/4 in (Left Hand Thread)	39	WFR153051	Washer 3/4 in
7	WFR154276	Shoulder Bolt 1/4-20 x 5/8 in	24	WFR154279	Carriage Bolt 5/16-18 x 3/4 in	40	WFR153040	Lock Washer 3/4 in
8	WFR154275	Spade Bolt 3/8-16 x 3 3/8 in	25	WFR800917	Motor Mount Bracket ONLY	41	WFR152025	Jam Nut 3/4-16
9	WFR152005	Nut 3/8-16	26	WFR153001	Washer 5/16 in	42	WFR153525	Self Clinching Stud 1/4-20 x 1 in
10	WFR153005	Split Lock Washer 3/8 in	27	WFR153002	Split Lock Washer 5/16 in	43	WFR850132	Bearing Backup Plate (includes No(s) 42 and 43)
11	WFR850135	Idler Angle	28	WFR152004	Nut 5/16-18		WFR852104	Bearing Backup Plate Assembly (includes No(s) 43, 44, 46 through 48)
12	WFR153001	Washer 5/16 in	29	WFR137030	8 Pin Connector	44	WFR880885	Impellor Cover
13	WFR153002	Split Lock Washer 5/16 in	30	WFR122701	Female Crimp Socket	45	WFR116011	Bearing Felt Seal
14	WFR150501	Tap Bolt 5/16-18 x 3/4 in		WFR122801	Pin / Socket Extraction Tool (Not Illustrated)	46	WFR153007	Split Lock Washer 1/4 in
15	WFR153001	Washer 5/16 in	31	WFR116010	Felt Motor Seal ONLY	47	WFR152002	Nut 1/4-20
16	WFR153002	Split Lock Washer 5/16 in	32	WFR150501	Tap Bolt 5/16-18 x 3/4 in	48	WFR880225	Bolt Flange Bearing Kit
17	WFR150501	Tap Bolt 5/16-18 x 3/4 in				49	WFR152014	Serrated Hex Flange Nut 1/4-20
						50	WFR314423	Belt Guard
						51	WFR153574	Lock Nut 10-32

GAS TRAIN ASSEMBLY

UPPER GAS TRAIN

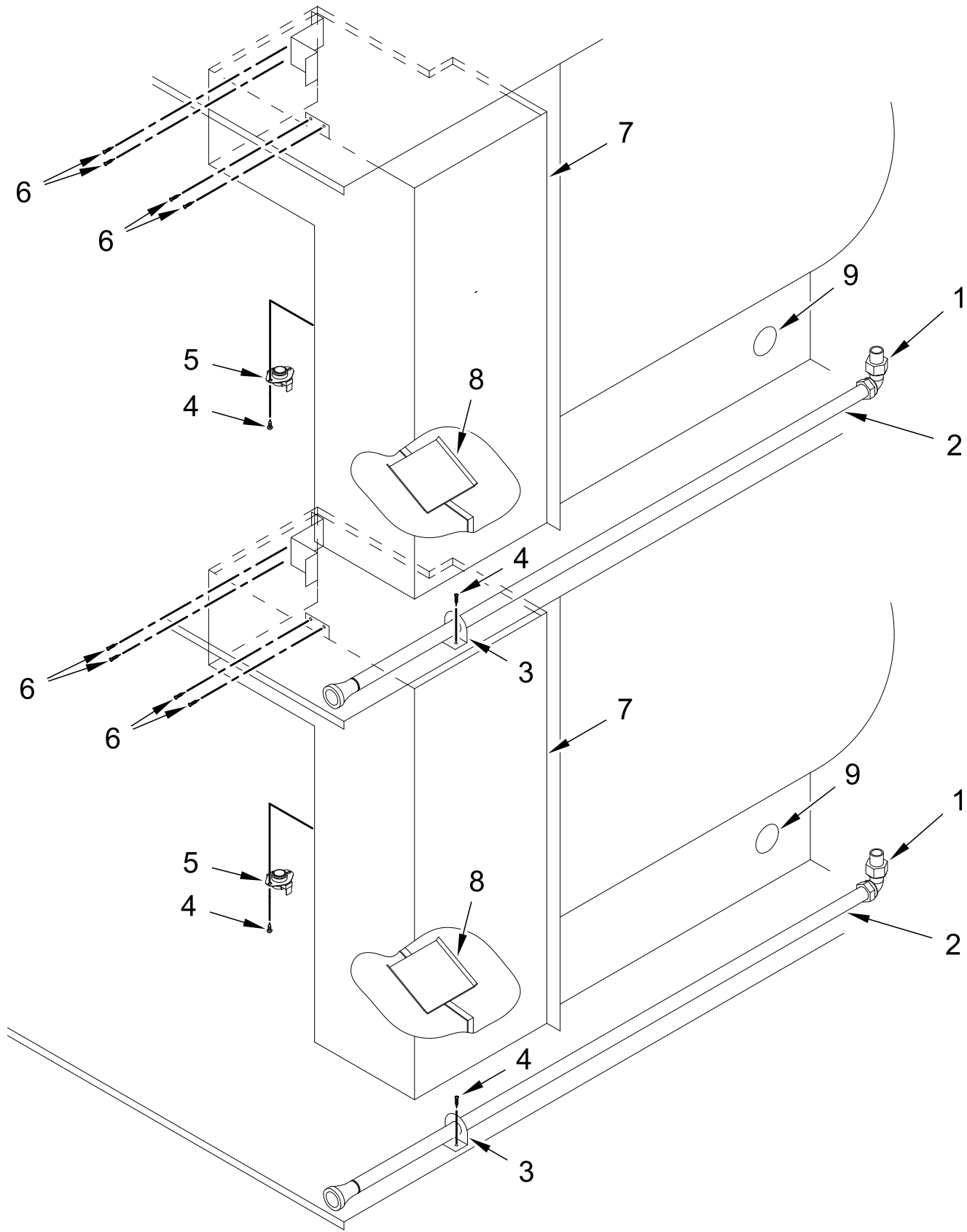
Note: Duplicate All Components
for Lower Gas Train



GAS TRAIN ASSEMBLY

<u>Illus.</u> <u>No.</u>	<u>Part No.</u>	<u>Description</u>	<u>Illus.</u> <u>No.</u>	<u>Part No.</u>	<u>Description</u>	<u>Illus.</u> <u>No.</u>	<u>Part No.</u>	<u>Description</u>
1	WFR153528	Self Clinching Stud 8-32 x 1/2 in	11	WFR822513	Ground Wire	22	WFR142934	Coupling with Mounting Tabs 1/2 in
2	WFR150301	Screw 8-18 x 7/16 in	12	WFR153017	SAE Washer #6	23	WFR141317	Union Elbow 1/2 in
3	WFR151001	Nut 8-32	13	WFR152013	Nut 6-32	24	WFR318009	Burner Tube Bracket
4	WFR121300	Open/Closed Bushing	14	WFR829998	H.V. Cable Assembly			OPTIONAL PARTS (NOT ILLUSTRATED)
5	WFR142506	Street Elbow Black Iron 1/2 x 1/2 in	15	WFR128918	Flame Sensor	WFR880145		Conversion Kit (Liquid Propane)
6	WFR318718	Pipe Bracket	16	WFR141130	Burner Tube	WFR121499		Wire Tie
7	WFR318600	Manifold Bracket	17	WFR345626	Gas Valve Slide Mount			
8	WFR140856	Burner Orifice #23 (Natural Gas)	18	WFR345625	J-Valve Bracket			
	WFR140810	Burner Orifice #42 (Liquid Propane Gas)	19	WFR128979	Gas Valve (Natural Gas)			
				WFR887273	Gas Valve (Liquid Propane Gas)			
9	WFR128937	Direct Spark Ignition Module (3 Tries)	20	WFR141225	Single Port Manifold			
10	WFR815724	Direct Spark Ignition Module Bracket	21	WFR142805	Black Iron Pipe 1/2 x 3/4 1/2 in			

BURNER BOX / PIPING ASSEMBLIES

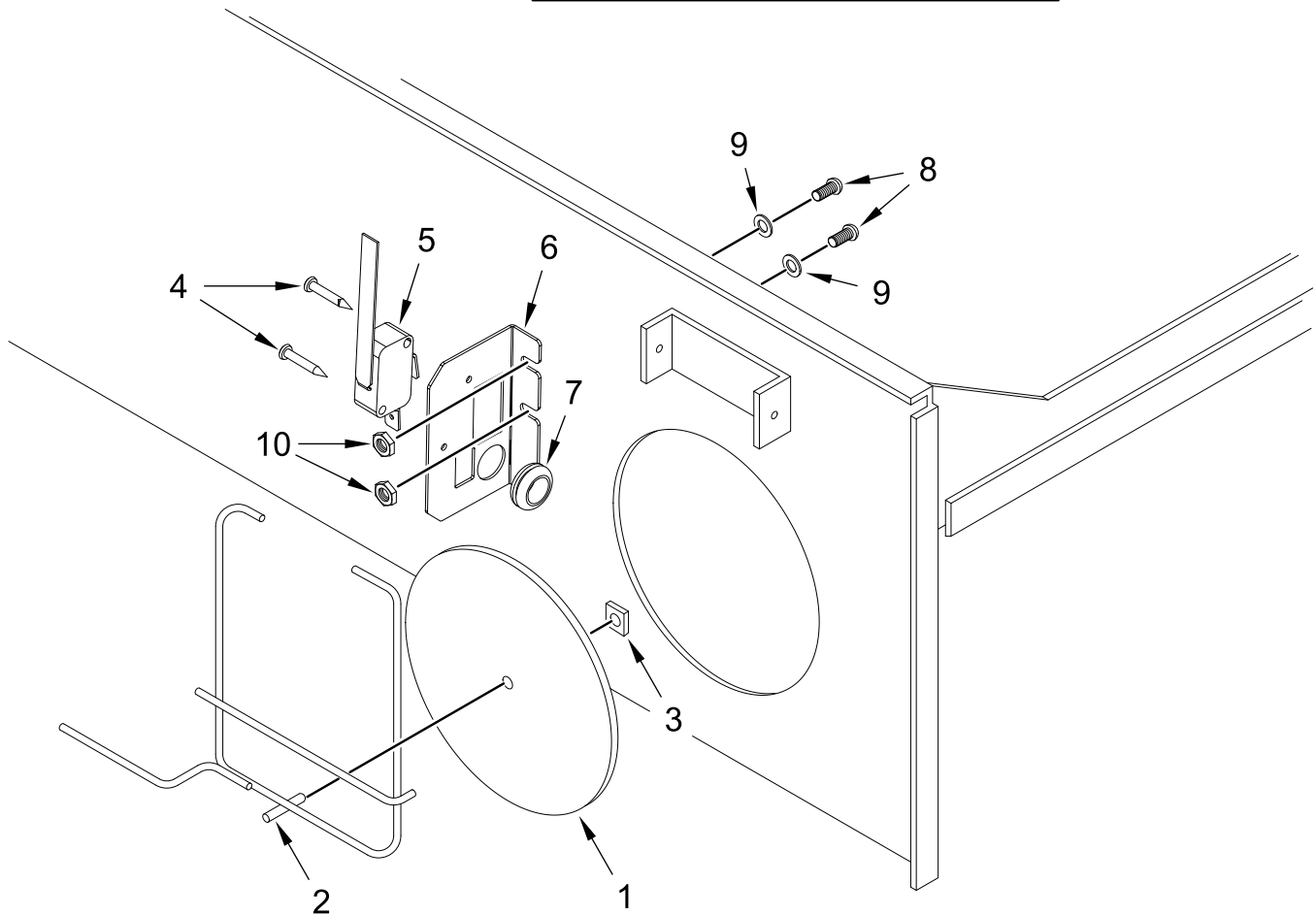


BURNER BOX / PIPING ASSEMBLIES

<u>Illus.</u> <u>No.</u>	<u>Part No.</u>	<u>Description</u>	<u>Illus.</u> <u>No.</u>	<u>Part No.</u>	<u>Description</u>	<u>Illus.</u> <u>No.</u>	<u>Part No.</u>	<u>Description</u>
1	WFR141317	Union Elbow 1/2 in	5	WFR130403	Burner Hi-Limit Thermostat 330°	9		Sail Switch (refer to Sail Switch Assembly page)
2	WFR142805	Black Iron Pipe 1/2 x 34 1/2 in	6	WFR150309	Screw 10-16 x 1/2 in (Hex Head TEK Crimptite®)			
	WFR142809	Pipe 1/2 x 29 1/8 in	7	WFR850742	Burner Box without Flame Spreader			
3	WFR318700	Pipe Bracket	8	WFR318048	Flame Spreader			
4	WFR150300	Screw 10-16 x 1/2 in (Hex Washer TEK Crimptite®)						

SAIL SWITCH ASSEMBLY

UPPER SAIL SWITCH ASSEMBLY

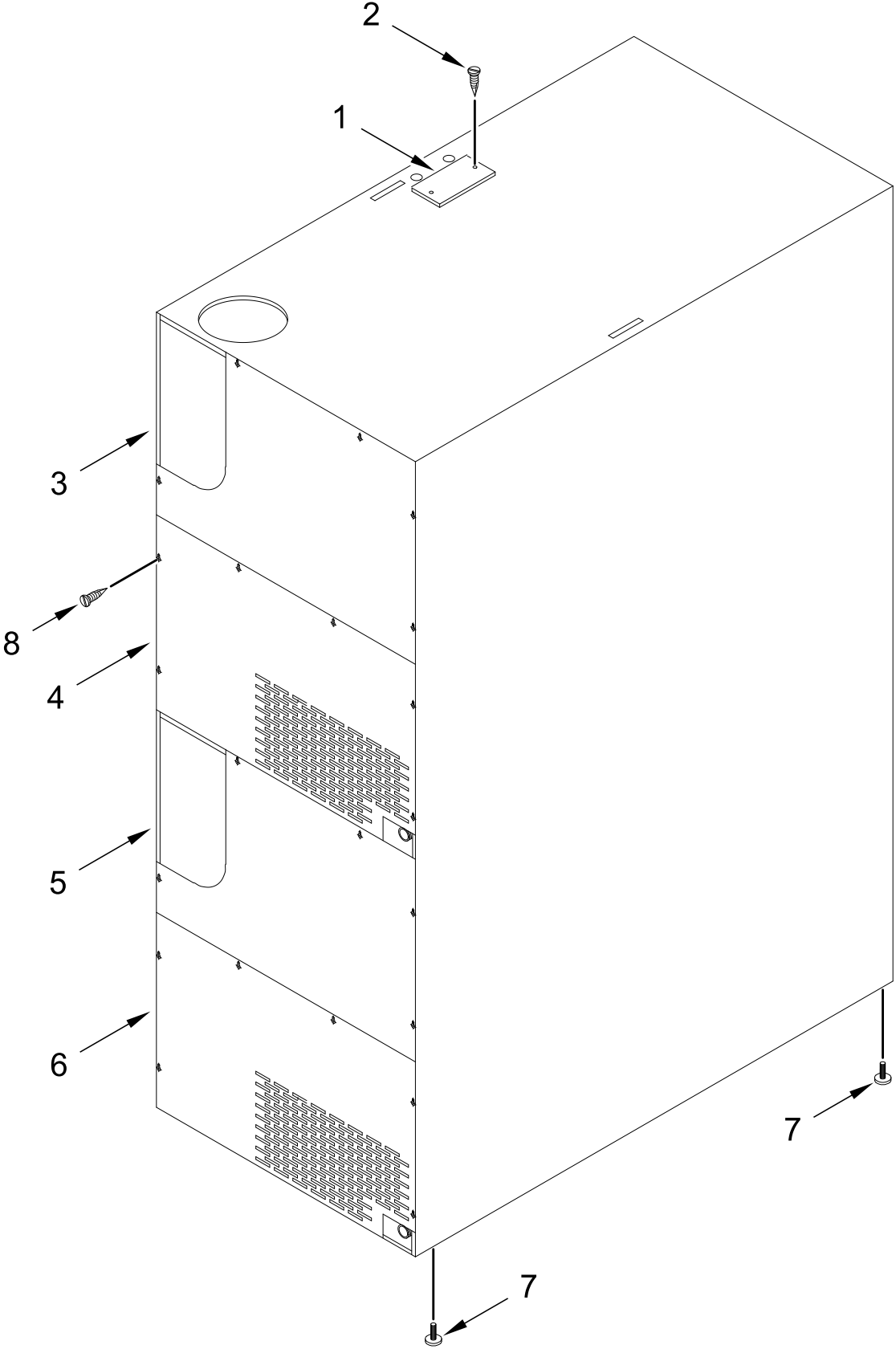


Note: Duplicate All Components
for Lower Sail Switch Assembly

SAIL SWITCH ASSEMBLY

<u>Illus.</u> <u>No.</u>	<u>Part No.</u>	<u>Description</u>	<u>Illus.</u> <u>No.</u>	<u>Part No.</u>	<u>Description</u>	<u>Illus.</u> <u>No.</u>	<u>Part No.</u>	<u>Description</u>
1	WFR319206	Sail Switch Damper	4	WFR150303	Screw #4 x 3/4 in	6	WFR312169	Service Switch Bracket (Sail)
	WFR802817	Sail Switch Rod and Damper Assembly	5	WFR122200	Service Switch	7	WFR121401	Rubber Grommet
		(includes No(s) 1, 2, and 3)		WFR823233	Service Switch Bracket Assembly (Sail)	8	WFR150001	Screw 6-32 x 1/2 in
2	WFR105550	Sail Switch Rod			(includes No(s) 4 through 7)	9	WFR153010	Lock Washer #6
3	WFR154002	Push-On Fastener 1/8 in				10	WFR152000	Nut 6-32

BACK GUARD ASSEMBLIES



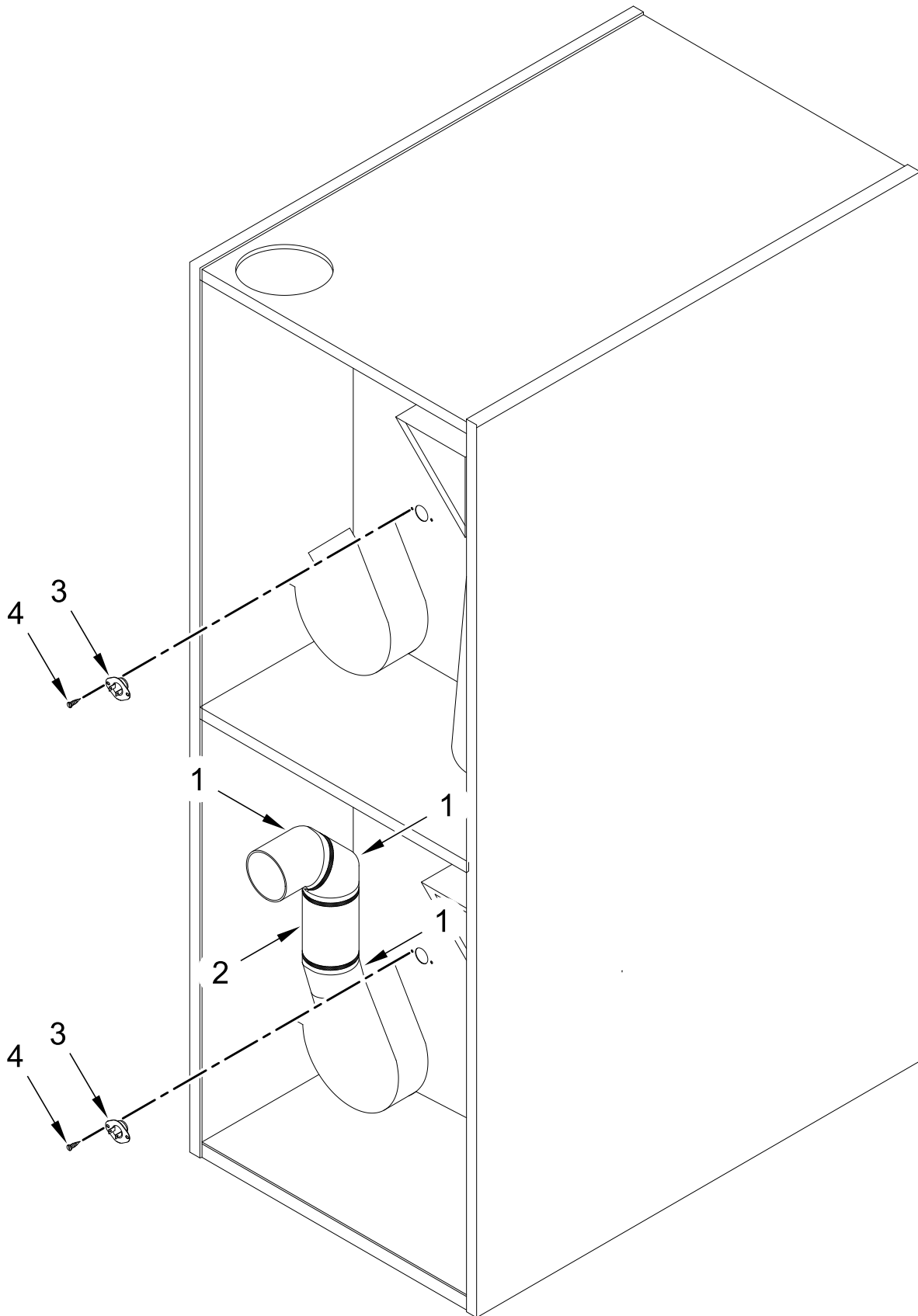
BACK GUARD ASSEMBLIES

<u>Illus.</u> <u>No.</u>	<u>Part No.</u>	<u>Description</u>
1	WFR315014	Top Electric Box Cover Plate
2	WFR150301	Screw 8-18 x 7/16 in
3	WFR314404	Guard (Top Upper)
4	WFR314405	Guard (Top Lower)

<u>Illus.</u> <u>No.</u>	<u>Part No.</u>	<u>Description</u>
5	WFR314404	Guard (Bottom Upper)
6	WFR314405	Guard (Bottom Lower)

<u>Illus.</u> <u>No.</u>	<u>Part No.</u>	<u>Description</u>
7	WFR103500	Adjustable Leveling Leg
8	WFR150301	Screw 8-18 x 7/16 in

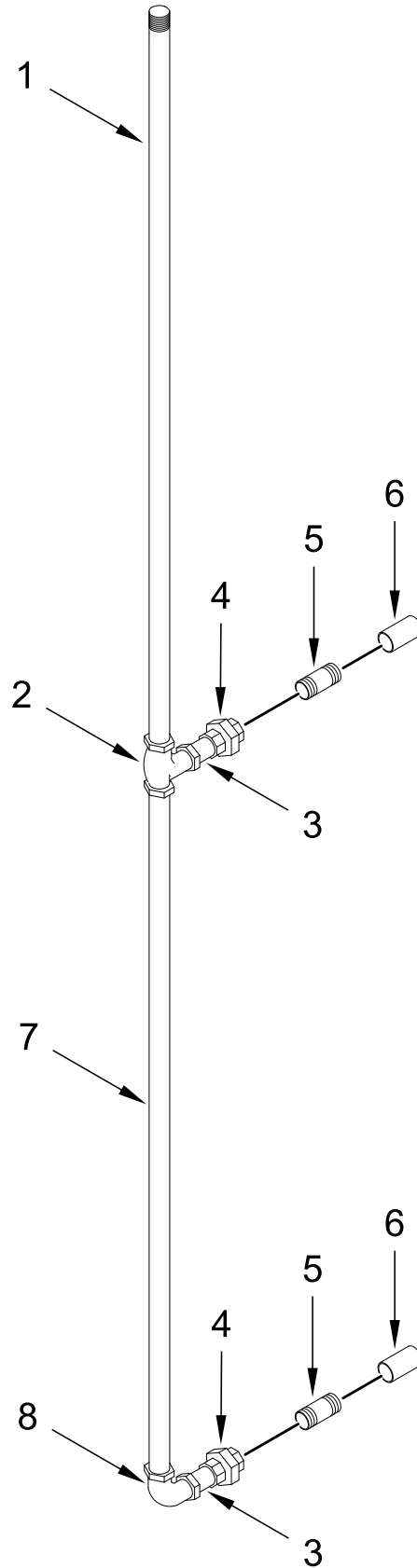
BOTTOM EXHAUST DUCT ASSEMBLY



BOTTOM EXHAUST DUCT ASSEMBLY

<u>Illus.</u> <u>No.</u>	<u>Part No.</u>	<u>Description</u>	<u>Illus.</u> <u>No.</u>	<u>Part No.</u>	<u>Description</u>
1	WFR143536	Elbow 6 in x 45°	3	WFR883985	Temperature Sensor Probe
2	WFR143545	Duct 6 x 6 in			
	WFR117505	Aluminum Duct Tape (When Ordering Specify length, sold by the inch)	4	WFR150301	Screw 8-18 x 7/16 in

OPTIONAL GAS PIPING KIT



OPTIONAL GAS PIPING KIT

<u>Illus.</u> <u>No.</u>	<u>Part No.</u>	<u>Description</u>	<u>Illus.</u> <u>No.</u>	<u>Part No.</u>	<u>Description</u>	<u>Illus.</u> <u>No.</u>	<u>Part No.</u>	<u>Description</u>
		Optional Gas Piping Kit	1	WFR142821	Pipe 3/4 x 36 in	5	WFR142814	Nipple 1/2 x 2-1/2 in
			2	WFR142505	Tee 3/4 x 1/2 x 1/2 in	6	WFR143001	Coupling 1/2 in
WFR880128	Gas Piping Kit		3	WFR142700	Close Nipple 1/2 in	7	WFR142824	Pipe 1/2 x 37 1/4 in
	(includes No(s) 1 through 8)		4	WFR142600	Union 1/2 in	8	WFR142500	Elbow 1/2 in x 90°

OPTIONAL PARTS (NOT INCLUDED)

<u>Illus.</u> <u>No.</u>	<u>Part No.</u>	<u>Description</u>
	WFR100405	Bearing Puller (for fan [impellor] shaft bearing)
	WFR114001	"CAUTION – Exhaust/Lint Screen" Label
	WFR114006	"WARNING – Fire Hazards" Label
	WFR120802	Red Butt Connector
	WFR120903	Wire Nut #74B
	WFR121014	Crimp-On Wire Nut
	WFR121499	Wire Tie
	WFR121500	Harness Tie 8 in
	WFR121503	Harness Tie Mounting Clip
	WFR112280	"Lint Compartment" Label
	WFR880884	Tumbler Puller Assembly
	WFR881299	Loctite Adhesive Kit (for set screws)